

An abstract painting with a warm, textured background. The colors range from light beige and cream to deep orange and red. Thick, expressive brushstrokes are visible throughout, particularly in the upper and middle sections. The bottom edge features a dark, horizontal band of paint, possibly representing a horizon or a shadow.

CAPE ANN MUSEUM

2018 ANNUAL REPORT



OUR MISSION

To foster an appreciation of the quality and diversity of life on Cape Ann, past and present; to further the knowledge and enjoyment of Cape Ann history and art; to collect and preserve significant information and artifacts; and, to encourage community involvement in our programs and holdings.

In all our activities, the Museum emphasizes the highest standards of quality and seeks to engage the broadest possible audience.

2018 BOARD OF DIRECTORS

John Cunningham, *President*
J.J. Bell, *Vice President*
Arthur Ryan, *Treasurer*
Nina Goodick, *Clerk*

Robert Bachelder
Stephanie Terelak Benenson
Kermit Birchfield
Bonnie Covington
William Cross
Charles Esdaile
Stephanie Gaskins
Henrietta Gates
Anne Rogers Haley
William Hausman
Sam Holdsworth
Thomas Hovey
William James
William Lynch
Susanna Natti
David Porper
John Rando
Anne-Seymour St. John
Hinda Simon
Kristin Zarrella

2018 MUSEUM STAFF

Administration

Ronda Faloon, *Executive Director*
Sheila Hruby, *Administrator*

Curatorial

Martha Oaks, *Curator*
Leon Doucette, *Curatorial Assistant*
Amber Wingerson, *Curatorial Assistant*
Erik Ronnberg, *Maritime Curator*

Library/Archives

Molly O'Hagan Hardy,
Director of Library & Archives

Education and Programming

Courtney Richardson, *Director of
Education and Public Programs*
Sarah Flanagan, *Education Coordinator*

Development

Leslee Shlopak, *Director of Development*
Amy Fanning, *Development Coordinator*

Communications

Meredith Anderson,
Designer & Media Coordinator

(this page) Steve Rosenthal © 2018 (cropped); (facing page) CAM docents Maggie Rosa and Pat Earl and volunteer Mary Rhineland enjoy a coffee break provided by Northshore 104.9. (cover) *Crane Beach Series #15*, c.1987, Acrylic on paper, by Dorothy Arnold (1924-2009). [Acc. 2018.38.15] (back cover) *Crane Beach Series #2*, c.1987, Acrylic on paper, by Dorothy Arnold (1924-2009). [Acc. 2018.38.2]

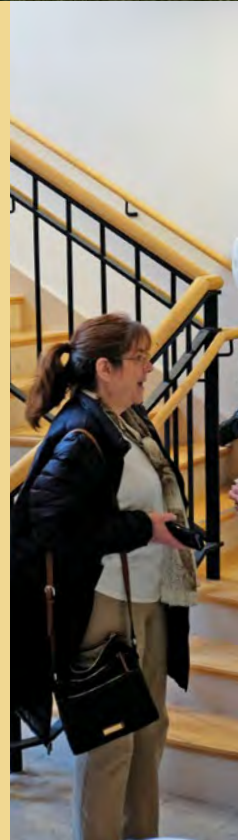
Visitor Services

Kathleen Maiorana, *Visitor Services*
Cara White, *Visitor Services*

Facilities

Walter Chianciola, *Facilities Manager*
Nick Tarantino, *Security*

Librarian/Archivist Stephanie Buck retired in 2018 after 14 years at the Museum. Development Coordinator Amy Fanning, Library Assistant Linda Johnson and Receptionist Dianne Sampson also retired in 2018. Education Coordinator Kristin Vega relocated to California. We are deeply grateful to each of them for their many contributions to the Museum.





Dear Friends,

At almost 150 years old, the Cape Ann Museum is venerable, durable and continually evolving. The next five years of our evolution will be guided by our recently completed Strategic Plan 2018-2023, leading us toward the celebration of our 150th anniversary in 2023. The priorities identified in the Plan are: improving the care, storage and display of the permanent collection; increasing investments in facilities and staffing; increasing awareness and engagement; solidifying our financial position and planning for succession. In 2018, significant progress was made toward many of these initiatives.

- The White-Ellery Campus Committee, with guidance from the Board and staff, planned for the creation of a new state-of-the art Collections Center located on the Museum's White-Ellery property.
- We added another permanent position to the Curatorial Department and updated the physical space of the Library/Archives and streamlined operations.
- We invested in a major roof repair project at the downtown campus and completed restoration work on the historic Barn (1740) adjacent to the White-Ellery House.
- The Museum hosted its first "traveling" exhibition, *The Little House: Her Story*, in collaboration with Gallery A4 in Tokyo, Japan and created our first online exhibition.
- The staff intensified preparations for the 2019 exhibition, *Homer at the Beach*, the most ambitious loan show in the Museum's history.
- The Museum continued its work toward accreditation through the American Alliance of Museums, hosting the second visit from a peer reviewer and finalizing a number of required "core" documents.
- In October, the Museum was selected to participate in the highly competitive Barr Klarman Massachusetts Arts Initiative, a \$25 million investment in 29 arts and cultural organizations across the Commonwealth. In addition to technical assistance, the Museum will receive \$375,000 over the course of three years to strengthen its financial health and to enhance its capacity to adapt to the changing cultural landscape.
- We prepared for significant changes in Museum leadership. Upon the announcement of Ronda Faloon's retirement, the Board assembled a Search Committee to hire a new director, and in December, the Board elected a new president when John Cunningham stepped down, after 15 years of service.

This is an exciting time for new leadership. Thanks to the excellent work of the Search Committee Director Oliver Barker assumed his new role in April 2019. Working with new Board President Charles Esdaile, he will oversee the realization of two major initiatives in 2019-2020. *Homer at the Beach: A Marine Painter's Journey, 1869-1880*, a special exhibition of Winslow Homer's earliest marine works, most of which were created on Cape Ann, opened in August 2019. With more than 50 works by this renowned artist on loan from major museums and collectors, the Museum is prepared to welcome more visitors than ever before. In 2020, a new 12,000 sq. ft. Collections Center and Flex Space will open. The new facility ensures that the Museum will be able to continue to collect and to care for its collections long into the future. The Flex Space provides opportunities for programming and exhibitions not possible at the Museum's downtown space. The coming years at CAM promise to be inspiring and engaging for all.

In this, our last letter to the membership, we would like to acknowledge the talent, dedication and superb work of the Museum's Board, staff and volunteers over these many years. And, to thank you, the Museum's members and friends, for your enthusiastic participation in all of our activities and for the generous support that sustains and advances this remarkable institution and its mission to celebrate the art, history and culture of this singular place.

Sincerely,

John Cunningham
Outgoing President of the Board

Ronda Faloon
Outgoing Director

2018 COMMITTEES

All Committee and Board Members serve in a volunteer capacity. Their participation greatly enhances the Museum's ability to meet its mission.

Audience Engagement Committee

Stephanie Gaskins, *Chair* Nina Goodick, Kerry Herrmann, Tom Hovey, John Huss, Mary Rhineland, Diane Story, Miriam Weinstein

Building Committee

J.J. Bell, *Chair* Stephen Bell, Robert Chandler, Pearce Coues, John Cunningham, Stephanie Gaskins, Nina Goodick, Sam Holdsworth, Charlie Mann, David Porper, John Rando

White-Elery Campus Committee

Stephanie Benenson and Charles Esdaile, *Co-Chairs* Norm Chambers, John Cunningham, Sam Holdsworth, Janet James, William Ellery James

Collections Committee

Kermit Birchfield, *Chair* John Cunningham, Mary Craven, Charles Esdaile, Stephen Lindo, Daniel McDougall, Eileen Mueller, Margaret Pearson, Ingrid Swanson, John Rando, Arthur Ryan

Advisory Subcommittee: Robert Bachelder, Elizabeth Clement, Sam Holdsworth

Library Sub-committee: David Rich, Arthur Ryan, Ingrid Swanson

Development Committee

Charles Esdaile, *Chair* Hope Bachelder, Jackie Bell, John Cunningham, Anne Rogers Haley, Jenifer McDougall, Susanna Natti, Stevie Neal, Anne-Seymour St. John, Hinda Simon

Executive Committee

John Cunningham, *Chair* J.J. Bell, Stephanie Benenson, Charles Esdaile, Nina Goodick, William Hausman, Thomas Hovey, Arthur Ryan

Finance Committee

Arthur Ryan, *Chair* John Cunningham, Thomas Hovey

Nominating Committee

J.J. Bell, *Chair* Henrietta Gates, William James

Governance Committee

Stevie Neal and Hinda Simon, *Co-Chairs* John Cunningham, Sam Holdsworth, Stephanie Gaskins

Search Committee

Henrietta Gates and Susanna Natti, *Co-Chairs* John Cunningham, Charles Esdaile, Sam Holdsworth, Janet James

Committee membership after 10/18 will be reflected in the 2019 Annual Report.

2018 SUPPORTING COMMITTEES:

Development

Fitz Henry Lane Committee: Hope Bachelder, Jackie Bell, Bonnie Covington, Susan Goodchild, Christine Lundberg, Jenifer McDougall, Lorraine Schulte, Shelagh Schylling, Judy Shields

Red Cottage Committee: Stephanie Benenson, Eliza Cowan, Torry Cullen, Caroline Esdaile, Melanie Healey, Allison Mueller

Homer Host Committee: Anne Rogers Haley, *Chair* Stephanie Benenson, Judy Carter, William Cross, Caroline Esdaile, Charles Esdaile, Nina Goodick, Janet James, Christine Lundberg, Susanna Natti, Anne-Seymour St. John

Collections Affinity Groups

Folly Cove Designers Committee: Sarah Carey, Deb Carlson, Bettie Cartwright, Beth Coolidge, Bonnie Covington, Pippy Giuliano

2018 ACQUISITIONS

The Cape Ann Museum thanks the individuals and/or their estates whose generous donations have enriched the Museum's collections over the course of the year.

FINE AND DECORATIVE ARTS

Gift of David Arnold: *Crane Beach Series*, c.1980s, a collection of sixteen paintings, acrylic on paper by Dorothy "Doffy" Arnold (1924-2009).

Gift of the artist: Collection of 19 paintings used as illustrations for the book *Schooner*, c.2002, all oil on canvas by Pat Lowery Collins.

Gift of Mary Craven: *Going Barefoot (Sally Stanton, age 12)*, 1915, oil on canvas by John Sloan (1871-1951).

Gift of Stephen and Gwen Dudley: Folly Cove Designers placemat printed with *Story and a Half* design, 1958, red ink on white linen by Margaret "Peggy" Norton (1905-2000).

Gift of Deane Hancock French: Collection of 19 figurative sculpture remnants (including sketches for finished works *Air* and *Triton*), early-mid 20th century, in clay and wax, as well as a sketch for an unidentified figure group, pencil on cardboard, all by Walker Hancock (1901-1998).

Bequest of Tamara Greeman: *Gloucester Harbor*, c.1953-1954, oil on shellacked cardboard, mounted on canvas by Frank Stella.

Gift of William Greenbaum: *View of St. Ann's Church and campus, corner of Pleasant and Prospect Streets, Gloucester* (featuring inset portrait of Reverend J. J. Healy), c.1890, lithograph on paper, drawn by C. E. Jorgensen and printed by George H. Walker & Co., Lithography, Boston.

Gift of The James Collection: *Harbor Cove, the Fort and Cunningham & Thompson Wharf*, c. late 1920s, oil on canvas by William Meyerowitz (1887-1981), given in honor of John D. Cunningham III, President of the Cape Ann Museum 2004-2018.

Gift of Holly Jannell: *Polishing the Floor (Cleaning Day)*, c.1916, oil on canvas by Rosamond Smith Bouvé (1876-1947), given in honor of Sandra Lepore, Lepore Fine Arts.

Collections Affinity Groups (cont.)

Mary Granfield, Kathy Groves, Gerry Herbert, Christine Kahane, Christine Lundberg, Grace Murray, Lee Natti, Susanna Natti, Mary Rhineland, Brenda Richardson, Candace Wheeler, Patsy Whitlock

Maritime/Fisheries Committee

Tom Balf, J.J. Bell, Fred Brink, William Cross, John Cunningham, Nina Goodick, Sam Holdsworth, Thomas Hovey, William Ellery James, Sarah Mowitt, David Porper, David Rich, Paul St. Germain

Strategic Planning Committee 2018

J.J. Bell, Stephanie Benenson, John Cunningham, William Cross, William Hausman, Sam Holdsworth, Janet James, William Lynch, Arthur Ryan, Ernst von Metzsch, Peter Wernau, Kristin Zarrella

Bathers on the Beach (aka *On the Beach*), 1933, Oil on canvas, by Theodore Roszak (1907-1981). Gift of Sara Roszak, 2018 (2019.55.4).





Going Barefoot (Sally Stanton, age 12), 1915, oil on canvas, by John Sloan (1871-1951).
Gift of Mary Craven.

Gift of Laura Stephanio Kerr: *Laura Stephanio*, c.1948, bronze bust by George Demetrios (1896-1974).

Gift of the estate of Gerrit Lansing: *Portrait of Gerrit Lansing* (1928-2018), c.1950s, charcoal on paper by Jane Freilicher (1924-2014).

Gift of Catherine Coolidge Lastavica: Two artworks—*Sketch of William Appleton Coolidge, Age 5 ¼ Years*, 1906, charcoal on paper by Cecilia Beaux (1855-1942); *Two Male Wrestlers*, c.1970, bronze by Walker Hancock (1901-1998).

Gift of Donald McPhail: Collection of eight artworks—*Stream in Snow*, c.1905, pastel on toned paper by William Partridge Burpee (1846-1940); *Lone Sailboat*, c.1915, pastel on toned paper by William Partridge Burpee; *Snowy Fields*, c.1905, pastel on toned paper by William Partridge Burpee; *Essex Boat Cribbing*, c. mid 20th century, lithograph on paper by Alan Crane (1901-1969); *Sketch for Essex Boat Cribbing*, c. mid 20th century, pencil on paper by Alan Crane; *Abandoned Farm*, c. mid 20th century, oil on canvas by Aldro T. Hibbard (1886-1972); *Untitled (Sunlit Winter Stream)*, c. mid 20th century, oil on canvas board by Aldro T. Hibbard; *Landscape with Stream*, c.1900, oil on canvas board by Henry Rodman Kenyon (1861-1926).

Gift of Ed Myskowski: *Our Town (Rockport)*, c. mid-late 20th century, watercolor on paper by Ann Fisk (1929-2009).

Gift of the artist: *Pipeline Barge, Gloucester Harbor*, c. 1983, acrylic on board by Myfanwy Phillips.

Gift of Robert Ritchie: *Portrait of Poet Charles Olson* (1910-1970), 1972, lithograph on paper (artist proof) by Cornelius Edmund Sullivan.

Gift of Sara Roszak: Collection of 14 drawings and paintings, 1932-1978, in oil paint, graphite and ink by Theodore Roszak (1907-1981).

Gift of Arthur Ryan: Two untitled illustrations depicting cartoon insects, c.1950, both ink on paper by Harrison Cady (1877-1970).

Gift of Linda Schreyer: Three artworks—*Lobster Pool, Gloucester*, 1939; *Magnolia*, 1939; *Rockport*, 1939, all ink on paper by Tibor Gergely (1900-1978).

ARTIFACTS

Gift of Jane Bowles: Two samplers—one by Martha Hale Friend (1819-1851) which is framed with an “intention to marry” certificate, and one by Abigail Somes (1817-1895).

Bequest of Tamara Greeman: A large collection of Cape Ann related souvenirs comprised of printed China, glassware, pottery and various miscellaneous items.

Gift of Michael Lafferty: *Graflex Box Camera* once owned by sculptor Walker Hancock (1901-1998), early 20th century, manufactured by Eastman Kodak Company.

PURCHASES

Museum Purchase: *Air (maquette)*, sculpted 1979, cast 2001, bronze by Walker Hancock (1901-1998), purchased with funds generously provided by Arthur Ryan, John Rando and Stephen Lindo.

Museum Purchase: Set of four sheet music scores published 1840, with lithographic illustrations by Fitz Henry Lane (1804-1865)—*Song of the Fisher's Wife*; *The Maniac*; *The Norfolk Guards Quick Step*; *The Old Armchair*, 23rd Edition.

2018 ACQUISITIONS FOR THE LIBRARY/ARCHIVES

Gift of Nubar Alexanian: Five books of his photography—*When the Fish Came First*, 2016; *Nonfiction: Photographs by Nubar Alexanian From the Film Sets of Errol Morris*, 2008; *Where Music Comes From*, 1996; *Jazz*, Wynton Marsalis, 2002; *Stones in the Road: Photographs of Peru*, 1991.

Gift of American Antiquarian Society: Nineteenth-century Cape Ann Newspapers, 1825–1900.

Gift of Annisquam Historical Society: Papers from the estate of Tom O’Keefe related to the Burnham, Cressy and Tarr Families, Gloucester celebrations, and the Unitarian Church, late nineteenth century to mid-twentieth century.

Gift of David Cook: Facsimiles of two Lighthouse Keepers Logbooks—Graves Light of Boston, 1905–1906; Thatcher’s Island Light of Cape Ann, 1906–1918.

Gift of David and Martha Crowley: *The Adventures of Reddy Fox*, Thornton W. Burgess, illustrated by Harrison Cady, 1941.

Gift of Sarah Dunlap: Fitz Henry Lane Research Papers for *Fitz Henry Lane: Family and Friends*, Sarah Dunlap and Stephanie Buck, 2005–2017.

Gift of Tamsen Endicott: Larry and Marion (Arnold) Harding Papers, 1930–2013.

Gift of Sean M. Fisher: Panorama Photograph of Halibut Point State Park, George H. Russell, November 30, 1928.

Gift of Deane Hancock French: *Bulletin of the American Field Service*, June 1939; Folly Cove Designers, Saima Natti Hancock Papers, 1953; Two books: *Memories of a Hostess: A Chronicle of Eminent Friendships*, M.A. DeWolfe Howe, 1922; *The Lights of Canopus*, Anvar I. Suhaili, 2007.

Gift of Gregory Gibson: Ephemera, manuscript and photograph collection related to Cape Ann, 1766–2002.

Gift of Ruth Heespelink: *On the Green Meadows*, Thornton W. Burgess, illustrated by Harrison Cady, inscribed by Harrison Cady, 1944.

Gift of The James Collection: Logbook and manuscripts related to David Low, 1816–1829.

Gift of Jennifer Kissel: Emma Fordyce McRae manuscripts and photographs, 1850–2008.

Gift of Stephen Lindo: U.S. Geological Survey Map, Gloucester, 1911, reprint of 1893 original; U.S. Department of Interior Geological Survey Map, Gloucester Quadrangle, 1945.

Gift of Helen V. MacLeod: Vincent Ferrini correspondence and ephemera, 1983–2007.

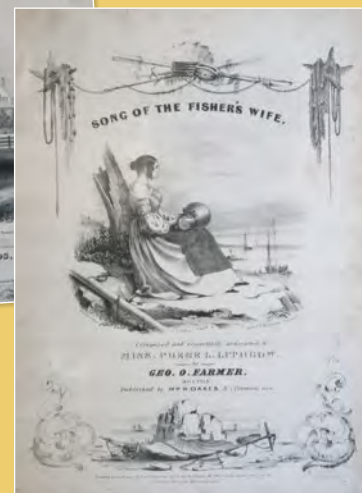
Gift of Mary McCarl: *Winterthur Portfolio: A Journal of American Material Culture*, Volume 48, No. 2/3, 2014.

Gift of Sandra Northrup: Three books—*A Treasury of American Prints*, ed. Thomas Craven, 1939; *Edward Hopper*, Robert Hobbs, 1987; *Stuart Davis*, Karen Wilkin, 1987.

Gift of Carolyn McClintock Peter: *The Adventures of Danny Meadow Mouse*, Thornton W. Burgess, illustrated by Harrison Cady, 1919.



Fitz Henry Lane
(1804–1865)
Sheet music cover
illustrations (1840).
Museum purchase.



2018 COLLECTIONS CONSERVATION PROJECTS

The Cape Ann Museum is committed to the care and preservation of its collection. In 2018, the Museum was able to successfully complete the following conservation projects.

Barn (1740) Stabilization

Stabilization work continued at the White-Ellery site focusing on the four-bay barn adjacent to the White-Ellery House. The barn was constructed around 1740 and sits on its original field stone foundation. Over the decades it was used for housing animals and the storage of hay and farm equipment. The current round of preservation work included a new wood shingle roof, siding and door and window coverings. A fire detection system was also installed in the structure. A grant from the City of Gloucester’s Community Preservation Act Grant Program supported the project.

Additional work accomplished included the conservation of:

- A c. 1890 lithographic view of St. Ann’s Church and Campus, Gloucester, printed by George H. Walker & Co.
- Three sheet music scores with cover illustrations by Fitz Henry Lane (1804–1865): *Song of the Fisher’s Wife* (1840), *The Maniac* (1840) and *The Norfolk Guards Quick Step* (1840). A fourth score, *The Old Arm Chair: A Ballad*, was also treated. Originally published in 1840 with a cover illustration by Lane, this particular score was the 23rd edition of the piece.
- A double-sided gouache on paper by artist Felicie Waldo Howell (1897–1968).
- A dozen ship models in the Museum’s permanent collection including a detailed diorama showing the evolution of the Gloucester fishing schooner made by John C. Ehler c. 1920. This conservation work was done by Maritime Curator, Erik Ronnberg.



Paul Revere (1735–1818) Beaker, 1765, Silver.
Gift of First Parish (Unitarian)
Church of Gloucester, 1950. [1512.02]

2018 LOANS

The Cape Ann Museum understands and appreciates the value of sharing its collection with the broadest possible audience and regularly considers requests from other institutions to borrow objects for special exhibitions.

In 2018, the Museum's Collections Committee approved the following outgoing loans:

- Fitz Henry Lane's 1855 graphite on paper drawing *Castine from Hospital Island* was lent to The Boston Athenaeum for an exhibition entitled *Subscription Campaigns, Contributions in Support of Community*.
- Four fish paintings on glass by Debbie Clarke (*Haddock; Silver Hake, Whiting; Cod; Redfish*) were lent to Endicott College for a special exhibition entitled *Investing in Art: Friends and Family*, held in the Walter J. Manninen Center for the Arts.
- The loan of three pieces of silver made by Paul Revere in 1762 and 1765 for the First Church of Gloucester was approved for a two-venue exhibition to be held at the New York Historical Society (9/6/19–1/12/20) and the Worcester Art Museum (2/5/20–6/7/20).

Harbor Cove, the Fort and Cunningham & Thompson Wharf, c. late 1920s, oil on canvas, by William Meyerowitz (1887–1981). Gift of The James Collection in honor of John D. Cunningham III, President of the Cape Ann Museum 2004–2018.





(top) Untitled illustration of cartoon insect, c.1950. Ink on paper, by Harrison Cady (1877-1970). Gift of Arthur Ryan. (left) *On the Green Meadows*, by Thornton W. Burgess, illustrated by Harrison Cady. Inscribed by Harrison Cady, 1944. Gift of Ruth Heespelink. (right) *The Adventures of Reddy Fox*, by Thornton W. Burgess, illustrated by Harrison Cady, 1941. Gift of David and Martha Crowley.

Gift of Clyde A. Solenski: Photographs of Goose Cove, late nineteenth century; Gloucester postcards, 1900-1910.

Gift of Laura Ventimiglia: *Nonna, What is St. Peter's Fiesta?*, Laura Ventimiglia, 2017.

Gift of David Wise: Papers related to his time as a history teacher at Gloucester High School, 1980-2000.

2018 LIBRARY PURCHASES

Beyond Beauport, James Masciarelli, 2018.

Cape Ann: Its Physical and Environmental Geology, Martin E. Ross, 2015.

Firsting and Lasting: Writing Indians out of Existence, Jean O'Brien, 2010.

The Philadelphia Ten: A Women's Artist Group, 1917-1945, Page Talbott and Patricia Tanis Sydney, 1998.

Ruth Mordecai, Ruth Mordecai, 2018.

Winslow Homer and the Camera: Photography and the Art of Painting, Catalog from Exhibition at Bowdoin College, 2018.

2018 EXHIBITIONS

Special exhibitions are designed to highlight the Museum's permanent collection and to bring artwork and artifacts from public and private collections across the country to Cape Ann. During 2018, the following exhibitions were organized and shared with the public:

Championing Women: Selections from the Permanent Collection

December 1, 2017 through September 23, 2018

Drawn from the Museum's permanent collection, this special exhibition spotlighted the work of women artists, working on Cape Ann, past and present.

Elynn Kröger

March 17, 2018 through October 15, 2018

A special exhibition of paintings by contemporary artist and Rocky Neck resident Elynn Kröger was held in the Museum's reception gallery in connection with *Championing Women*.

Unfolding Histories, Cape Ann Before 1900

March 31, 2018 through September 9, 2018

Presented in the Museum's Cape Ann Gallery, this exhibition of historical and archival materials from nine Cape Ann institutions explored some of the area's often overlooked stories including Native American life, women's history and the temperance movement.

Harold Rotenberg, An American Impressionist

April 14, 2018 through June 17, 2018

This major exhibition explored the long and illustrious career of artist Harold Rotenberg (1905-2011), a prominent member of Cape Ann's art colony who created a large body of work in a variety of mediums, moving between traditional compositions and abstraction.

Harrison Cady: View from the Headlands

July 7, 2018 through November 9, 2018

Affectionately known as the *bug painter*, Harrison Cady (1877-1970) was a much loved member of Cape Ann's summer art colony throughout the 20th century, a prolific illustrator, a printmaker and a painter and one of the last links to our nation's Golden Age of Illustration. This exhibition explored the entire *oeuvre* of Cady's career and included works from the Eric Carle Museum of Picture Book Art and the New Britain Museum of American Art.

Gone Fishin'—Recent work by Jeffrey Marshall

August 10, 2018 through November 25, 2018

An artist and an educator, Jeffrey Marshall's most recent work was inspired by Gloucester's working waterfront as observed from the Morse-Sibley Wharf on Smith's Cove in East Gloucester.

Dorothy Arnold: Sky/Horizon/Light

November 24, 2018 through March 3, 2019

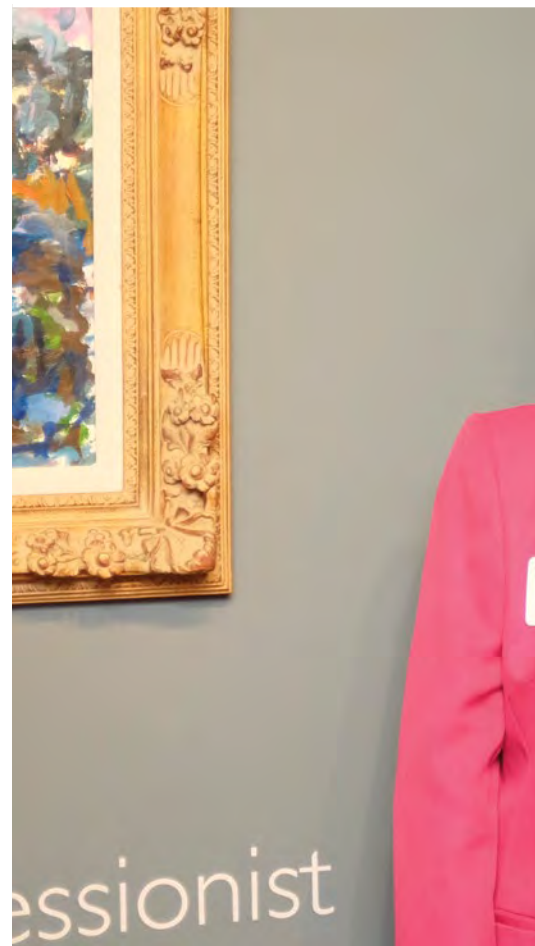
For many years, artist Dorothy Arnold maintained a summer home and studio in Gloucester's Bay View neighborhood; this exhibition featured a series of paintings she did from the studio exploring Crane Beach as seen across Ipswich Bay. The 16 paintings that made up the exhibition are now part of the Museum's permanent collection.

The Little House: Her Story

November 3, 2018 through March 31, 2019

An exhibition which premiered in Tokyo and traveled to three other venues across Japan before traveling to Cape Ann, celebrated the amazing talents of author, illustrator and designer Virginia Lee Burton (1909-1968). It was organized in recognition of the 75th anniversary of the publication of Burton's classic children's book *The Little House*.

(from top) Visitors study the archival treasures on display in *Unfolding Histories: Cape Ann before 1900*; Art historian Judith Curtis and Judi Rotenberg, daughter of the artist, at the opening reception for *Harold Rotenberg: An American Impressionist*.





2018 PUBLICATIONS

Unfolding Histories: Cape Ann Before 1900

By Dr. Molly O'Hagan Hardy. This exhibition catalog includes contributions from Cape Ann Museum archivist Stephanie Buck, historian Mary Ellen Lepionka, photographer Steve Rosenthal and Cape Ann Museum curator Martha Oaks.

Harold Rotenberg: An American Impressionist

Contributions by art historian Judith Curtis and Cape Ann Museum curator Martha Oaks. Remembrance by the artist's daughter, Judi Rotenberg.

The Gloucester Guide: A Stroll Through Place and Time

As part of the celebratory events leading up to Gloucester's 400th anniversary, the Cape Ann Museum updated and published the fifth edition of the late Joseph E. Garland's beloved book. Project oversight provided by Cape Ann Museum archivist Stephanie Buck, edited by Leslie Beatty, with contributions from Helen Garland and Cape Ann Museum staff. Major funding provided by The Garland Legacy Project.

RECOGNITION

Historic New England's 2018 Annual Awards for Excellence: Honor Book

Drawn from Nature and On Stone: The Lithographs of Fitz Henry Lane by Georgia B. Barnhill, Andrew W. Mellon Curator of Graphic Arts Emerita at the American Antiquarian Society and Melissa Geisler Trafton, managing editor of *Fitz Henry Lane Online* with contributions from Cape Ann Museum curator Martha Oaks and archivist Stephanie Buck. Meredith Anderson: Project director and in-house designer.

2018 New England Museum Association Publication Award: Third Place

Captain's Party Invitation: Gloucester Sea Serpent

Meredith Anderson: Project director and in-house designer.



PROGRAMS AND EDUCATION

The Museum's annual program calendar is designed to complement its collection and special exhibitions with a goal of providing quality Cape Ann-related programming that is engaging, thought provoking and relevant to the lives of today's diverse audiences. During 2018, members and friends of every age were treated to a robust schedule of gallery talks, exhibition openings, lectures, walking tours, artist workshops, film screenings, dance and musical performances.

THE NUMBERS

- In 2018, more than 13,000 people were engaged with 826 special tours and programs.
- Of these, 6,200 participated in the 147 adult educational and outreach programs offered by the Museum.
- An additional 2,700 visitors were introduced to the Museum and its collections through 556 docent-led tours.
- More than 4,800 children and families participated in 123 programs designed specifically for them.
- Students from more than 20 local schools displayed outstanding artwork throughout the year in the Museum's galleries.

HIGHLIGHTS

A number of musical collaborations during the year allowed members and friends to experience our unique collections with both eyes and ears. In January, *Quick Steps & Ballads*, a performance by musicians Kathleen Adams and Kristina Martin, featured music and songs from Fitz Henry Lane's era, selected from sheet music designed by Lane. The program was offered in conjunction with our special exhibition *Drawn from Nature & on Stone: The Lithographs of Fitz Henry Lane*. In October, members and friends were treated to a concert presented by the New England Philharmon-

ic's Principal String Quartet. Their *The Power of Pattern* program was inspired by the work of the Folly Cove Designers.

Collections and special exhibitions were also the focus of our lectures, gallery talks and conversations. *Unfolding Histories: Cape Ann Before 1900*, an exhibition featuring archival treasures from nine local repositories, provided opportunities to explore the early history of Native Americans on Cape Ann, African American history and civil rights, the temperance movement, and more. Painter Judi Rotenberg led a gallery talk which brought her father, Harold Rotenberg's art to life. Author Denis Kitchen provided insight into Harrison Cady's illustrations in his *Madness in Crowds* lecture. With new releases hot off the press, local authors Paul St. Germain, Martin Ray, Chet Brigham and Eric Jay Dolin, presented their latest works to our community.

Speaking of community, we connected with the people of Cape Ann and beyond via a number of memorable collaborative programs including: Two screenings of *Dead in the Water*, a film by local director David Witkower; *Conversations with Contemporary Artists* Jon Sarkin and Paul Cary Goldberg; Friends of Dogtown's *Dogtown Days*; the public book launch and celebration of Joe Garland's *Gloucester Guide*; an exhibition and public reception to honor Folly Cove Designer Lee Kingman Natti; annual lectures by Rocky Neck Art Colony & Copley Society artists in residence;



(left to right) A young artist's work on display during the Gloucester Public Schools' Annual Arts Festival; Volunteer Holly Clay of the Annisquam Historical Society and Maritime Curator Erik Ronnberg display rare materials from CAM's archives during CAM's first *Archives Illuminated* Open House; Artist Jeff Marshall shares some tips with a group of budding artists.

a panel discussion exploring the *Transformable Power of Wearable Art* with seARTS; participation in the steering committee for Gloucester's 400th anniversary; the Annual Charles Olson Lecture offered in collaboration with Gloucester Writers Center; the print department at Montserrat College of Art presented print demonstrations and studio visits for our members; Gloucester Historical Commission held their annual awards in our auditorium; and finally, with generous support from Cape Ann Savings Bank and other sponsors, we were able to spread the joy of Virginia Lee Burton's book, *The Little House*, through hands-on gallery experiences, story time, gingerbread house-making, and more!

As it has for almost a decade, the White-Ellery House (1710) served as a venue for special programming on the first Saturday of the summer months. In the spirit of *Unfolding Histories: Cape Ann Before 1900*, we encouraged community members to bring out their books and paper ephemera for *Appraisal Day* in June. The morning before the exhibition *Harrison Cady: View from the Headlands* opened to the public, children were invited to the White-Ellery House site to meet some of the curious creatures and critters featured in Cady's illustrations. In August, the week leading up to Jeff Marshall's *Gone...Fishin'* exhibition opening (which featured drawings of contemporary trucks owned by local fishermen), classic truck aficionados were treated to a display of antique vehicles on the House's front lawn. Schooner festival fans were invited to stop by to see historic fishing films in the first weekend in September and we were joined by Backyard Growers in October to imagine what the fall harvest might have looked like when residents of the House grew their own produce.

YOUTH AND FAMILY PROGRAMS

In 2018, the Museum welcomed students from local, national and international schools, preschool-aged through college. Highlights of programs designed specifically for children, families and schools included the following:

- *CAM Kids Second Saturday* brought over 1,500 children and families in for LEGO building, book illustration, calligraphy, pirate tales, butterfly studies, and more!
- Three fully subscribed *Unfolding Histories: Cape Ann Before 1900* teacher professional development workshops illustrated ways to connect students with their local history while focusing on contemporary themes.
- The engagement of local artists Mary Rhineland, Coco Berkman, Jeffrey Marshall, Paul Cary Goldberg and Jon Sarkin, who shared their inspiration and hands-on art making with children of all ages.
- Weekly *Watercolor Wednesdays* offered during the summer months and *Afternoon Story Time* presented in the fall provided ways to introduce the youngest visitors to the Museum's exhibitions.
- New field trips and new school relationships were developed which directly related to our collections and special exhibitions, including *Unfolding History: Cape Ann Before 1900*, the Gloucester Sea Serpent story and *The Little House, Her Story*.
- 1,150 children and their families visited the Museum on one day in May as part of the Gloucester Public Schools' Arts Festival.



FRIENDS AND VOLUNTEERS

We are deeply grateful to our friends and volunteers who play a vital role in advancing the Museum's mission. They share their time, expertise and enthusiasm and serve as the Museum's ambassadors to the larger community.

Associates/Docents

Gail Anderson, Leslie Beatty, Selma Bell, Margaret Bernier, Diane Bevins, Charlene Callahan, Anne Babson Carter, John Day, Sharon Day, Dawn Dexter, Christina Doyle, Patricia Earle, Tamsen Endicott, Tony Giannelli, Pippy Giuliano, Joan Gorga, Marion Hall, John Huss, Bruce Jones, Elizabeth King, Sally Longnecker, Paul McGeary, Heidi McGrath, Sarah Mowitt, Stevie Neal, Elaine Ohlson, Trudi Olivetti, Ann Pulver, Mary Rhineland, Maggie Rosa, Anne-Seymour St. John, Teresa Silverman, Trina Smith, Bonnie Sontag, Ingrid Swanson, Bonnie Sylvester, Hazel von Rosenvinge, Miriam Weinstein

Community Archivists

Peter Anastas, Karen Andrews, Judith Bannon, Les Bartlett, Stephanie Buck, Sam Ciolino, Helaine Davis, Anne Hadley, Linda Johnson, Betsy Passmore, Anne Siegel, Howard Thomas

Volunteers in Collections, Education, Programs and Events

Paul St. Germain, Kathe Cohen, Peggy Flavin, Salam Madi, Steve Rosenthal, Jan Charles, Ted Charles

Interns

Carla Kaneb, Master of Liberal Arts Program, with a concentration in Collections Management,
Harvard University Extension School
 Julia Wainwright, *Denison University*
 Diane Story, *Gloucester High School*

FITZ HENRY LANE SOCIETY MEMBERS

\$5,000

Daniel and Kathelen Amos
J.J. and Jackie Bell
Stephen and Jill Bell
John and Mollie Byrnes
Samuel and Rebecca Campbell
Norman and Monever Chambers
Theodore and Jan Charles
Chad Cowan and Lindsey Pearce
Mary Craven
Betty M. Ellis
Charles and Caroline Esdaile
Alec Dingee and Susan Gray
John F. Haley, Jr. and
Anne Rogers Haley
John and Debbie Henning
William Ellery and Janet James
Peter Kiely
Nancy LeGendre and
Walter Herlihy
Selina Little
Elizabeth Moore
Susanna Natti and Alan Willsky
Steve and Kit Rosenthal
Richard and Donna Tadler

\$2,500

Filiberto Agusti and Susan Whitton
Robert and Hope Bachelder
Clement and Stephanie Benenson
Kermit and Glenys Birchfield
Thomas Burger and André Robert
Richard and Deborah Carlson
Allan and Kathe Cohen
Christopher and Bonnie Covington
Robert and Jan Crandall
William and Ellen Cross
John and Lee Cunningham
Deborah Freeman
John and Kathy Galligan
Darius and Stephanie Gaskins
Henrietta Gates and
Heaton Robertson
Bartlett and Sue Geer
Stephen and Nina Goodick
Garth and Lindsay Greimann
William and Rose Hausman
Timothy Hilton
Thomas and Caroline Hovey
Patricia Murphy Kerstein
William and Anne Kneisel
William and Nancy Lynch
Daniel and Jenifer McDougall
Lee Kingman Natti

Margaret Pearson
George and Nancy Putnam
John Rando, Jr.
Buzz and Lorraine Schulte
Jack and Judy Shields
Hinda Simon
Stephen and Lisa Smit
Ernst and Gail von Metzsch
Thomas and Kristin Zarrella
Chip and Margaret Ziering

\$1,000

Peter and Lisa Alcock
Robert Amory
Glen and Pat Alto
James and Gale Bacon
Christine Bancheri
Catherine Bayliss and
Michael Lipton
Walter and Gina Beinecke
John and Jan Bell
Karen Bell
Mac Bell and Simone Early
Deborah Blake
Kevin and Rosemarie Bottomley
Michael Bresnan and
Mary Ann Shery
Horace Brock
Thomas Brooks and Karen Newman
Michael and Cathy Brown
John and Carroll Cabot
Gibson and Sarah Carey
Thad Carpen and Susanne Guyer
George and Judy Carter
Bettie Cartwright
Robert Chandler and Ronda Faloon
Peter and Katherine Coakley
John and Bayard Cobb
Linzee and Beth Coolidge
Pearce and Phoebe Coues
Robert Cox and Karen Bell
Thomas and Patricia Cronin
David and Katharine Davis
David and Mary Dearborn
Deborah DeCotis
Jane and Chris Deering
Ronald Druker and Julie Freedman
Albert Ellis and
Anne-Seymour St. John
Joan Ellis and Jun-ya Nakatsugawa
John Ellis
Thomas Ellis
Kenneth and Alice Erickson
Edmund and Maryellen Feeley

Peter Feinstein and
Miriam Weinstein
Kristine Fisher and Richard Crangle
Dale and Ann Fowler
Ian and Josie Gardiner
Mark Glovsky and Livia Cowen
Sargent and Susan Goodchild
Stephen and Marion Hall
James and Leslie Hammond
James Hand
Jerry and Margaretta Hausman
James and Mary Hayes
Peter and Geraldine Herbert
Harry and Mary Hintlian
Samuel and Betsy Holdsworth
Judith Hood
Jeff Hotchkiss
John Iglehart and Suzanne Forte
Robert and Pamela Irwin
Sally Jackson
Thomas Janis and Joseph Weglarz
Stephen Kaloyanides
Diane and Gary Kaneb
Chris and Susan Klem
Diane Chen Koch-Weser
Peter and Bobbi Kovner
Catherine Lastavica
Andrew and Mary Lenhardt
Stephen and Sigi Lindo
Jackie Littlefield
Angus and Leslie Littlejohn Jr.
Ann Lord
Joan Lovejoy
Paul and Christine Lundberg
Marietta Lynch
Walter Manninen
Lawrence and Barbara Maver
Barry and Carol Mawn
Michele May and David Walt
Elton and Constance McCausland
John and Mary Ann McCormick
Ann McDonald
Kimberly McGovern and
Frank Scherkenbach
Angus and Jeannie McIntyre
Katherine McMillan
Denise Merlino-Felock and
John Felock
Anne Meyer and John Ockenga
Richard Mills and Amy Bell
John and Betty Minnick
Amy Moore
Christine Moore
Joseph and Eileen Mueller
Gregory and Stephanie Neal
John and Pam Newberry
Myranda O'Bara and Jay Somers

Carolyn Paradise and
James Wayrynen
Tami Paumier and Glen Warren
John Curtis Perry and
Sarah Hollis Perry
Patricia Petrou
Barrett and Lydia Petty
Samuel and Susan Philbrick
David Porper
Anthony and Clare Quinn
Eliza Rathbone
Judson and Lisa Reis
Howard and Joan Resnikoff
Peter and Lucy Robbins
Joseph and Maggie Rosa
Michael and Patty Rosenblatt
Richard and Anne Rosenfeld
Arthur Ryan
Roger Salisbury and
Judith Monteferrante
Stuart Scantlebury and
Lecia Ann Turcotte
Christopher and Erica Schenck
Jack and Shelagh Schylling
Pauline Sheedy
Thomas and Lyn Shields
Tina Snider and Scott Zamore
Steven and Linda Sojda
Andrew Spindler and Hiram Butler
James Sprague
James and Kate Stavis
Campbell Steward
Karen Stone Talwar
Ian and Peggy Strachan
Peter and Lynda Surdam
Ingrid Swanson
David and JoEllen Sweet
Lynn and Joan Swigart
Keith and Kathy Taylor
William and Jolinda Taylor
Roswitha and William Traves
David and Emily Tyree
Eijk & Rose-Marie van Otterloo
Linda Walker
Michael and Tee Wall
Scobie Ward
David and Mary Warner
Cornelius and Corinna Waud
Barry and Susan Weiner
Kenneth Weiss
James and Ginny Welch
Peter and Thi Linh Wernau
Brent and Linda Wilkes
John Willis, Jr.
Clive Wood and Stella Martin
Edward Zuker and
Judi Ross Zuker

MEMBERS/CONTRIBUTIONS

The Cape Ann Museum depends on the generosity of the people and institutions who share a belief in its mission. The Museum gratefully acknowledges the Museum members who have supported the Museum this year—January 1, 2018 to December 31, 2018.

Benefactors \$500

George Davis and Lisa Bonneville
Justin and Kari Gale
Katharine Hamilos
Noel Mann and Daan Sandee
Peggy and Andy Matlow
Ronald and Mimi Pruett
Elizabeth Rhineland and
Peter MacEwen
David and Marie Louise Scudder
Trina Smith
Randall and Laura Stevens
Clara Wainwright
Matthew Whitlock and Penny Neal
Peter and Winky Whitman

Sponsors \$250

Lawrence and Elizabeth Allen
Mary Barcus
Robert and Leslie Beatty
Ed and Sheila Becker
Jonathan Bell and
Veronique Aubert
David and Lida Bernard
Thomas and Becky Bernie
Allan and Phyllis Bezanson
Billings Bramhall, Jr.
Elana Brink
Robert and Barbara Brown, Jr.
William and Sharon Burton
John and Kate Cabot
Stephen and Linda Collins
David Condino and
Margaret Brady
Diana Connors
Nathaniel and Catherine Coolidge
Gregory and Catherine Crockett
Martin and Natalie Daley
Sarah Dunlap
Dominic and Tamsen Endicott
Barbe Ennis-Abramo and
Stefan Abramo
Adele Ervin
Michael and Mona Faherty
Diane Faissler
Newell and Kate Flather
Elizabeth Fragola and
Nicholas Senzamici
Peter and Annette French
Jonas Gavelis and Bonnie Sylvester
Philip Goldsmith and
Melissa Boshco
Henry and Gale Guild
Patricia and Randy Hock
Paul and Betsey Horovitz
Stephen and Christine Kahane
Jonathan Katz and Norah Wylie
Miles and Joan Kulukundis
Gregory and Sigrid Lambert
Lisa Lambert and Joan Kitis
Mark Lindsay and
Martha Morgan Lindsay
Fred and Jill Lovejoy
Daniel and Marcy Lyman
Jane Lyman and Lisa Kenyon

Robert and Eileen Matz
David and Janet McAveeny
Scott and Mimi McDougal
Susan McKain and Ken Steiner
Jay McLauchlan and Sara Stotzer
Jon and Carol Morse
Peter and Nadine Mowschenson
John and Jane Olson
Olivia Parker and
Helen Parker Brown
George and Kathy Putnam
Robert and Susan Reece
John and Jean Rees
David and Barbara Roberts
Tom and Sally Simons
David and Ginni Spencer
Michael Stelluto
Nancy Strisik
Howard and Betty Thomas
Yuri Tuvim and
Mary Louise Giuliano
Chris and Ellen Velline
Douglas and Priscilla Viets
Patrick Vives and Rebeca de Vives
Graham and Jan Walker
Robert and Margaret Wallis
Pierre and Nancy Warry

Contributors \$125

Elizabeth Akerley
Meredith Allen and Jerry Cook
Barbara Almy
Wasim Altaf
Edward and Mary Anderson
William and Yvette Anderson
Robert and Judy Anderson
Gail Anderson and Bill Effner
Laurie Andrews
Alison Anholt-White and
Nick White
Judith Avery
James and Elizabeth Ayer
Gordon Baird and Joe Ann Hart
Susan Baker-Leavitt
William and Susan Baldwin
Tom Balf and Donna Heaney
Selma and Leslie Bell
Linda Berard
Edward and Linda Berger
Karen Berger
Melvin and Laura Bernstein
Louise Blodget
Bruce and Joan Bradshaw
Janice Brand and Robert Grady
Jonathan Brandon and Scheft
Peter Brau and Bethany Fritzsche
Chester and Anthea Brigham
Joseph Brooks
Steven and Kenneth Brown
Lois Brynes and Serena Hilsinger
Joan Buchanan
William and Gerrie Butman
Janice Cane and Walter Hess
Anne Babson Carter
Philip Chalmers and Susan King
Suzanne Clerkin and
Raymond Pape
Hugh and Joan Collier
Evelyn and Barbara Cox
Ray Crane and Monica Lawton
Peter Creighton
Jo-Anne Crystoff and
Guy Hermann
Ronald and Joan Curhan
Tom and Treacy Curlin
Phil and Eve Cutter
Susan Davies and Rick Talkov
Brian and Beth Davis
Craig and Laurel Deery
Peter Dorsey
Ed and Jody Dove
Christina Doyle
Francis Duehay and Jane Lewis
Patricia Dumas and Esther Joyce
Charles and Lucille Duval
John Easton and Sem Sutter
William and Deborah Ebeling
Sheryl Ellis
Mary Emmons
Jolene Erickson and Emily Erickson
Edward Everett
Jay and Helen Featherstone
William and Lyn Fenollosa
Adam Fieldsteel and Irene Mulvey
Nina Fletcher
Karl Frank
Peggy Friedland
William and Judy Friend
David Gardner and
Patricia Bridgman
Timothy and Katerina Gates
Joseph and Catherine Geary
Myron and Eileen Geller
Robert Gillis, Jr. and
Pixie Harrington
David and Regina Girard
Lia Duca Glovsky
Peter and Jan Goodwin
Lilli Gordon
Michael and Karen Gorton
Mark and Janet Gottesman
Robert and Arlene Gray
Paul Gross and Cornelia Tenney
James and Katherine Groves
Robert and Judith Gwozdziowicz
Michael and Elizabeth Habich
Joseph Hadley and
Anne Marie Reilly
Douglas and Susan Hall
Isabella Halsted
Gay Peters Hammond and
Frederick Hammond
Ann Harrison and James Starkey
Bruce and Meg Herman
Janet Herrmann
Richard Heuser
Harry and Judith Hoglander
Harriet Holdsworth
Eric and Hilarie Holdsworth
Martha and Thomas Hooper

Peter Hornbeck and Martha Leven
Israel and Gillian Horovitz
Elliott and Mary Jacobson
Steve and Carolyn Johnson
Karen Johnson
Carol Judd
Jeff Kaplan and Alison McCann
Ken and Cathy Kaplan
Thomas and Laura Kerr
Judith Kirwin
Linda and Jerome Klein
Peter and Karen Koch-Weser
Vanessa Labbe
Kathleen LaBonte
Stephen and Janet Langer
George Langer and Karen Wise
Peter and Sandy Lawrence
Robert and Martha Lawrenz
Michael and Nancy Leavitt
John LeJeune and Mary Donovan
Herman and Ann Lilja
Richard Loomis and
Pamela Mansfield-Loomis
Peter and Elaine Lucas
Richard Luecke and
Perry McIntosh
Robert Lufkin and
Marsha Bornhoff
Rick and Laney Makin
Cara Manfredi
David Manley and Nancy Shorter
Charles Mann and Connie Dice
Anthony and Maria Marolda
Kristina and Gene Martin
Rob Martin and Trish Roach
Alex and Julie Mattera
John and Joanne Mavroides
Bing McGilvray
Kerry McKenna and Jeffrey Logan
Robert McPhail and Susan Guest
William McCQueen and Carla Bosch
Herb and Deborah Meiselman
David and Judy Messick
Mia Millefoglie
Fern Miller
Merritt and Linda Miller
Bruce Miller and
Elizabeth Saunders
Stephanie Moffat
Gretchen and Ned Morse
Leslie Nicholson
Peter and Liz Nugent
Craig and Lillian Olmsted
Elizabeth Olson
Jerrold Oppenheim and
Theo MacGregor
Frances and Robert Osten
Gregg and Susan Parsons
Kate and Kieran Parsons
Dick and Dina Peinert
David and Tammy Phinney
David and Joanna Pistenmaa
Paul and Carolyn Pitman
Ted and Kathleen Pomfret
Christopher and Esther Pullman
Robert and Susan Ranta
Kay and Martin Ray
Kinley and Bonnie Reddy
Bud and Margaret Ris
Phillip and Frances Romanowicz
Paul Romary and Douglas Vooy
John Ronan and
Sandra Dahl-Ronan

**RED COTTAGE SOCIETY**

The Red Cottage Society is the Museum's young patron society for art and culture lovers. Launched in 2015, the Red Cottage Society connects individuals under 50 who share an interest in Cape Ann's rich history and vibrant culture through social and educational events.



Eliza Cowan and Caroline Esdaile enjoy a Red Cottage Society event.

Patron \$600

Clement and Stephanie Benenson
John M. Ellis
Caroline and Charles Esdaile
Joseph and Allison Mueller
Chad Cowan and Lindsey Pearce
David and Lisa Rich
Benjamin and Courtney Richardson
Scott Smith and Christopher Hadley
David and Emily Tyree
Peter and Thi Linh Wernau

Couple \$300

Ryan Bardsley and Lindsey Shaw Bardsley
Oliver and Anne Barker
Erich and Jennifer Buddenhagen
Rayna and Kevin Hannaway
Terence and Melanie Healey
Tom and Maryanne Kiely

Couple \$300 (cont.)

Barbara and Matthew Lynch
Chip and Eliza McConnell
Omar Roca and Mariann Bucina Roca
Caleb and Natalie Rulli
Matthew and Sarah Swift

Individual \$150

Chelsea Bell
Morgan Bell
Katelyn Chambers
Allison Charles
Amanda Charles
Eliza Cowan
Torrance Cullen
Pamela Foster
Jennifer Fremont
Adrian Lauterstein
Jonathan MacDonald

Bruce and Jane Rosenberg
Melvin and Martha Rosenblatt
J. Ronald Ross and Mary Benham
Albert and Cynthia Roth
Dick and Olga Rothschild
Claudine Scoville
Teresa Silverman
Michael and Diane Slezak
Cary and Christopher Smallhorn
James and Martha Smeallie
Derek Smith and Rebecca Oldfield Smith
Russell and Rosamond Smith
Richard and Barbara Smith
Thomas and Caroline Spang
Eileen Sporing and Jocelyn Ramella
Paul and Elizabeth St. Germain
Suzanne Stacy
Janet Tsui Tang and Wayne Stimens
Ann Teixeira
Bruce and Pat Tobey
Claire Tomlinson and Edward Garner
David and Helen Tory
Peter Tysver and Louise Wilhelm-Tysver
Peter and Denise Vadala
Tom Vawter and Anne Hadley
Charles and Elaine Von Bruns
Kristen Wainwright
Anne and Jon Waisnor
Stephen and Anne Warhover
Mike and Candace Wheeler
Anthony and Joreen White
Robert and Pamela White
Geneva Whitten
Alan and Charlotte Wilson
Fred and Susan Winthrop
Oliver and Carolyn Wolcott Jr.
Peter Wolfskehl and Gail Sarofeen
Ron Wood
William Yates and Tamson Gardner
Suzanne Ziemer

Member/Member+ \$50 to \$85

Mim Aaronian
Shep Abbott
Robin Abel
Jerry Ackerman
Sue Adams
Jeremy and Kathleen Adams
David Adams and Carol Mortimore
Raymond Agler and John Carter
Laura Alavosus
Deborah Aldrich
Nubar Alexanian
Marie Alfieri
Francis and Rebecca Aliberte
Catherine Allard
John and Lenice Allen
William Allison
Daniel Altshuler
Peter Anastas
Anne-Marie Anderson
Margaret Anderson
Eben and Sandy Andrew
Willard and Linda Andrews
Alva Angle
Dorothy Antczak
John Appleton
Kathleen Gerdon Archer

Linda Arslanian
Ron and Mary Atwood
Isobel Baade
Katherine Babson
James and Kathy Bacsik
Thomas Baker and Sheila Golden-Baker
Mara Balsbaugh
Ann Banks
Mr. & Mrs. B. Devereux Barker III
Catherine Barker-Ross
Henry and Liz Barron
Robert and Mary Barthelmes
Les Bartlett
Paula Bartlett
Martin and Betsy Basch
Lisa Batchelder
Anna Vojtech Baumgaertel
Joe Bayes and Lynda Goldberg
John Elliott and Elisabeth Bayle
Benjamin and Ann Baylies
Peter and Janice Beacham
Mary Beck and Wilma Busse
Beate Becker-Vavak
William and Helen Beekman
William and Jean Bellissimo
David and Sally Benjamin
Thomas Bentley
Bill and Karen Bergenthal
John Berges and Ann Leamon Berges
Peter Bergholtz
Sam Bernan
Margaret Bernier and Joanne Schulze
Henry and Wendy Betts
Richard and Ellen Bianchini
Ted and Judy Bidwell
Bradford Bigelow
Julia Bishop
Charlotte Bishop
Sheila Blake
Bernice Blitz
Molly Blue
Judith Bly
Hollis Bodman
Judith Bogage
Robert Bosselman
Jon Holland and Lisa Bouchie
Linda Bourke
Warren Boutchia
Tracy Bowen
Barbara Boyce
Guy and Karen Bradford
Loring Bradlee
Deborah Bradley
Hillary Bradley
Sally Bradshaw and Dottie Murkland
Joseph and Judith Brain
Richard Regan and Mary Ellen Branscombe
Lewis and Miriam Braverman
Ronald Breault
Donald Breen
John and Sarah Brennan
Barbara Brewer
Linda Mason Briggs
Sara Bronstein
Robert and Faye Brophy
Elisabeth Simonds Brown
Jonathan Brown and Julie Krakauer

Jane Brown and Laura Brown
 Peter and Robin Brown
 Mike Perrow and
 Diana Brown McCloy
 Charles and Tina Browne
 Millicent Bruce
 William and Barbara Bruns
 Stephanie Buck
 David Buckles and Andrea Milder
 Carolyn Buckley
 Kevin Burke and
 Elizabeth O'Connor
 Robert Burke
 Dawn Burnham
 Charles and Maria Burnham
 Karen Burns
 Geoffrey and Donna Burr
 Jay and Sharon Burrill
 Stephen and Andrea Butler
 Joseph Butler and Nancy Davis
 Ann Byers
 Elaine Byrne
 Michael and Dawn Byrnes
 Abigail Cahill
 Cathleen Cahill
 Andrew and Peggy Calkins
 Jim and Charlene Callahan
 William and Max Callender
 Phyllis Cameron
 Bruce and Ann Campbell
 Maggie Carbone
 Mark Carlotto
 Joe Carper and Sue McKittrick
 Randolph Carr and
 Gabrielle Barzagli
 Betsy Carter and Ira Levine
 Arnold and Kathleen Casavant
 John Casey and Paul Pinto
 Robert Cashman and
 Lynn Browne
 Robert and Deborah Cassady
 Holly Cavanaugh
 Philip Charles
 Philip Chase
 Thomas and Claudette Chmura
 Ellen Chulak
 Robert and Carroll Clark
 Andi Clark
 Peter and Karen Clarke
 James Clyde
 Irma Cohen
 Robin Cohen
 Frances Colburn
 William and Betsey Colby
 Irene Cole and Sarah Bryant-Cole
 Jim and Stephanie Cole
 Nancy Coleman Wolsk and
 Jane Meringer
 Jay Davis and Ruth Collier
 Pat Lowery Collins
 David Newton and June Colvin
 Frank and Judith Conahan
 Patricia Conant
 Stuart and Cynthia Conant
 Lorna Condon
 Kevin and Diane Connolly
 John and Polly Connors
 Denis and Jeanne Conroy
 William Conway
 Beth Cooper
 Kathryn Costa
 Edith Pucci Couchman
 Deborah Cowan

David Cox
 Kitt Cox and Theresa Dady-Cox
 Robert Coyne
 Carol Craig
 Lisa Craig
 Jeffrey and Jo-Ann Crawford
 Suzanne Crocker
 Robert and Ruth Crocker
 Kathy Cross
 Wes and Kim Crouse
 Virginia Crowley
 David and Martha Crowley
 Timmie Cullen
 Pat Cummings
 Damon and Melissa Cummings
 Joan Ross Cumiskey
 Peter Mercurio and
 Linda Cunningham
 Henry and Judith Curtis
 David and Judith Curtis
 Deal Cynthia and Laura Bailey
 James and Patricia Dalpiaz
 William Bazel, Jr. and
 Susan Dalton
 Brian and Debra Darby
 Carl and Mimi Darrow
 Martha Davis
 Nancy Davis
 Brenda Davis
 Katherine Noelle Davis
 Lesley Davison
 John and Sharon Day
 Barbara DeCoste
 Stephen and Marta Deely
 Michael DeFalco and Jacqueline
 Ganim-DeFalco
 Peter and Karen DeLacy
 Robert and Ann DeMaine
 Therese Desmarais
 James and Sharon Deveney
 Bruce Devon and
 Veronica Nanagas-Devon
 Steven Dieck and Hatsumi Miura
 Vicki Diez-Canseco
 Peter Digre and Carole Shauffer
 Helene Dionne
 Carol Dirga
 George and Claire Dix
 Leo Patrick Dobbins
 Franklin and Frederica Doeringer
 Nina Doggett
 Greg Sacca and Patricia Donahue
 David Donovan
 Sandra Douglas
 Richard Douglas
 Christine Downing
 Laura Doyle
 Patricia Drinkwater
 Judy Drinkwater and Betsey Smith
 James and Elise Dudley
 William and Jean Dugan
 Patricia and Liza Dugan
 J.P. and Andrea Dunn
 Thomas Duram
 Philip and Ann Dwight
 Pat Earle
 Ruth Edmonds
 Richard Einhorn and
 Julie Nagazina
 Carleton and Virginia Ekborg
 Celia Eldridge
 Larry and Charlotte Eliot
 Thomas Ellis and Lin York



BUSINESS & INSTITUTIONAL MEMBERS

We are grateful to the many local businesses whose membership support helps to sustain the Museum and to strengthen the Cape Ann community as a whole.

Fitz Henry Lane Society

\$5,000

Beaumont Hospitality Group

\$2,500

Cape Ann Savings Bank

\$1,000

Atlantis Oceanfront Inn

Bomco, Inc.

Cape Ann Marketplace

Carroll Steele Insurance Agency, Inc.

Endicott College

Ipswich Bay Advisors

KVAssociates

Leary Mechanical Inc.

Nor'East Cleaners

The Building Center

Timothy S. Hopkins Catering

Benefactors \$500

Jon R. Morse CPA, P.C.
 Systems Viewpoint, Inc.
 Taormina Electrical Inc. dba Roy
 Spittle Associates

Sponsors \$250

Elizabeth Clement Fine Arts
 Essex Alarm and Security, Inc.
 Frontiero Law Office, P.C.
 Glovsky and Glovsky, LLC
 Olson Lewis + Architects
 Timberline Enterprises
 Vista Motel, LLC
 W. Herbert Goodick, Inc.
 Woodman's Inc.

Contributors \$100

C.B. Fisk, Inc.
 Cape Ann Insurance
 Agency, Inc.
 Catherine Ryan
 Art Image Design
 Deborah Coull Salon
 Gloucester Marine
 Genomics Institute
 Good Harbor Graphics
 Gorton's Seafood
 Halibut Point Restaurant

Contributors \$100 (cont.)

Hecht Development
 Hershey Frame Shop
 Hughes-Bosca
 Iron Tree Service
 Marty Morgan Pottery
 Mercury Gallery
 Professional Career
 Solutions LLC
 Pulsifer & Associates
 Tremont Auctions
 Trident Gallery
 Virgilio's Bakery

Public Library Members

Allen County Public Library
 Beverly Farms Library
 Georgetown Peabody Library
 Hamilton-Wenham
 Public Library
 Ipswich Public Library
 Manchester Public Library
 Memorial Hall Library
 New Castle Public Library
 Newburyport Public Library
 Peabody Institute Library
 T.O.H.P. Burnham Library

(above) *View of Norwich, from the West Side of the River.* Colored lithograph on paper. Drawn by F. H. Lane. Lithograph by Sarony & Major Lithography, New York. Published by A. Conant, 1849. Collection of the Cape Ann Museum. Gift of Edward L. Stone, 1972. Conservation funded by Wendy Shadwell's Bequest to the American Historical Print Collection Society.



- Robert and Surrey Elwell
 Robert and Diane Emmons
 Elizabeth Enfield
 John and Betty Erkkila
 Sharon Erwin
 Deborah Fabi
 Barbara Farrer
 Linda Fates
 Michelle Faulds and Hailey Faulds
 Jamie and Maureen Fay
 Tom and Jennifer Fels
 Adele Ferreira
 Alfred and Deborah Fichera
 Charles Fields
 William Finch and Carol Rose
 Guy and Andrea Fincke
 Prudence Fish
 Christian and Michelle Fisher
 Gerald Fitzgerald
 Patricia Fitzpatrick and
 Michele Bourgeau Lea
 Mary Flaherty
 Michalene Flaherty
 Thomas Flaherty and
 Elizabeth Lalik
 Ronald and Eleanor Fleet
 Colin Fleming
 William and Dorothy Flynn
 Ken and Rachel Ford
 Paul Forman
 Naomi Foster
 Deb Fraize
 Charles and Mary Francis
 Rae Francoeur
 Richard Stoloff and Audrey Fraser
 Hollis French II
 Dennis Carlberg and Wendy
 Frontiero Carlberg
 Marion Frost and Martha Frost
 Bruce and Elizabeth Gable
 William and Bonnie Gale
 Denise Gallo
 Gail Gang
 Roger Garberg and Marion Sibley
 David and Alice Gardner
 Judith Garland
 Frank and Janet Garrison
 Maureen Gedney
 Gerald Gehr and
 Eloise Licata-Gehr
 Cornelia Gephart
 Denton Crews and
 Katherine German
 Paul Gerry
 Deborah Geurtze
 Anthony and Marjorie Giannelli
 Gregory Gibson and
 Anne Marie Crotty
 Leonardo Gilardi
 Thomas and Beverly Gillett
 Jeffrey Glaser
 Tony and Samantha Goddess
 Gretchen Golden
 Josette and Louis Goldish
 Barry Goldman and
 Margaret Franklin
 Curtis Gollrad and Dale Brown
 Francisca Gonzalez-Arias
- Susan Goodall
 Francis and Evelyn Goodhue
 Leonard and Cheryl Goodman
 Jane Goodwin
 Powell Dixon and Heidi Goodwin
 Carmine and Joana Gorga
 Gary and Judith Gosbee
 Robert Gould and
 Sherry Roe-Gould
 Richard and Constance Gourdeau
 John and Rebecca Graham
 Martin Grealish
 Joyce Griffin
 Gary Griffin and Leslie Pearlman
 Robert and Johana Griffith
 Paul and Lauren Gudonis
 Margaret Guest
 Catherine Gunn
 Clyde and Jani Gunsaulus
 Janis Guter
 Leonard Gyllenhaal
 Sarah Ann Hackett
 Lisa Hahn
 James Sirois and Jennifer Hale
 Myra Hall
 Laura Hallowell
 Joy Halsted
 Michael Hamill
 Lois Hamilton
 Sandra Hamilton
 Ed and Susan Hand
 Benjamin Hansbury
 Bonnie Hardy
 Christopher Olney and
 Jane Hardy
 Carolyn Harris
 Jane Harris
 Stephen and Susan Harris
 James and Karen Harrison
 Katrina Hart
 Edward Hart and Anita Robboy
 Katherine Harvey
 Judson Harward
 Charles Hay and Joanne Crerand
 Stephanie Hecht
 Leslie Heffron
 Robert Heinman and Susan Field
 Cynthia Hendrickson
 Craig and Joan Henkels
 William and Joy Hennessey
 Susan Herman
 Kerry Herrmann
 David Hershey-Webb
 Toby Higgins
 Brian and Kathleen Hines
 Margaret Kippen Hinrichs
 Russell and Melissa Hobbs
 Susan Conant Holden
 Herb and Meg Hollender
 John and Elizabeth Holmberg
 Jennifer Holmgren
 Frank and Nancy Holt
 William and Lynn Holton
 Seamus and Amy Hourihan
 Stephen and Jeanne Howard
 Ken and Billie Hruby
 Robin Hubbard
 Amy Huber

(from top) Former Museum docent Patsy Whitlock (center) with her daughter (left) and guest speaker Sherri Rinker at the annual Women's Luncheon; Mary Hayes and artist Eileen Mueller and her handiwork at the seARTS Wearable Arts event; Members and friends at the Captain's Party, the Museum's annual fundraising event; Museum member Rose Hausman and curator Martha Oaks.

Gordon and Jane Hugenberger
 Andrena Huntsman
 Daniel and Priscilla Hurley
 Victor and Jean Hurst
 John and Sally Huss
 Priscilla Huston
 Marilyn Hyde
 Paula Ives
 Paul and Ann Jo Jackson
 Edith Jacobs
 Stephen and Deborah Jencks
 Ray Jenness
 Robert Jenness
 Jeff Henderson and
 Patricia Johnson
 Carl and Miranda Johnson
 James and Diane Johnson
 Bruce Jones and Tina Cross
 Fran Jurga
 Earl and Suzy Kadiff
 Ellen Kaminski
 Karla Kaneb
 Trish Kania
 Louis Kaucic and William Merritt
 George and Linda Kaus
 Nancy Kearns
 Barbara Kelley
 Michael Kelley and
 Marny Williams
 Gillian Kellogg
 Gail Kennedy
 Phyllis Kerr
 Michael and Fiona Kerr
 Marilyn Kimball
 Elizabeth King
 Elizabeth Ann King and
 Laurie Ann Ure
 Stephen Labonte and Jen Kirk
 Earl and Sharon Kishida
 John Klein and Liese Elerin
 Lois Lehman Knaus
 Daniel and Cathy Knowlton
 James and Victoria Knowlton
 Paula Knuuttunen
 Mark and Heather Kolnsberg
 Antonio Dimambro and
 Ruth Kolodney
 John and Janet Koza
 Thomas and Laura Kozachek
 Bruno and Barbara Kozel
 Norman Krause
 Anne Kreider
 Margaret Kretschmar
 David Kriebel and
 Margaret Quinn
 Michael and Ann Lafferty
 Mark Laliberte
 Gary Lambert
 Gene Elizabeth Landis and
 David Donavel
 Sherrin Langelier
 Gerrit Lansing
 Henry and Penny Lapham
 Virginia LaPlante
 Joseph and Margaret Larkin
 Ron Donnell and Karen Larsen
 Thomas and Grace Lattof
 Milt and Helen Lauenstein
 Linda Lavery
 David Leach and
 Laurie LaChapelle
 Tamara Leaf
 Ellen Leaman

GRANTS

In 2018 the Cape Ann Museum applied for and was the grateful recipient of financial support for operations and special projects from the following funders:

Barr Klarman Massachusetts Arts Initiative

\$46,875 Barr Foundation
\$46,875 Klarman Family Foundation
 Funds received support capacity-building as part of the *Barr Klarman Massachusetts Arts Initiative*

City of Gloucester Community Preservation Fund

\$3,490 Support to conserve and frame the 1851 *Map of the Towns of Gloucester and Rockport, Essex Co., Massachusetts*, by Henry Francis Walling (1825-1888)

Highland Street Foundation

\$3,000 Support for *Free Fun Fridays* programming

Mr. & Mrs. Raymond J. Horowitz Foundation for the Arts

\$100,000 Support for the 2019 special exhibition, *Homer at the Beach*

Kanter Kallman Foundation

\$5,000 Funds to support the purchase of work by a contemporary artist

Massachusetts Cultural Council

\$18,240 Funds to support annual operations

The Umberto Romano and Clorinda Romano Foundation

\$10,000 Funds to support conservation work on the Umberto Romano Collection
\$5,000 Support for *Portrait of Place*, middle/high school art history curriculum

Wyeth Foundation for American Art

\$8,000 Support for the exhibition catalogue to accompany the 2019 special exhibition, *Homer at the Beach*



(above) 1851 Walling Map of Gloucester and Rockport, created by Henry Francis Walling (1825-1888). Collection of the Cape Ann Museum Library & Archives. The conservation of this map was partially funded through a grant from the City of Gloucester Community Preservation Act.

NATIONAL ENDOWMENT FOR THE HUMANITIES PLANNING GRANT UPDATE

Museum staff members spent several months, beginning in 2017 and continuing into 2018, creating plans for the reinstallation and reinterpretation of the Museum's permanent exhibitions related to the history of Gloucester's offshore fishing industry between 1830 and 1947. The project was funded by a grant from the National Endowment for the Humanities.

Staff members were joined in their efforts by professional exhibit designers, an audience evaluation firm, a digital media consultant and visiting scholars. The overarching goal of the project was to design artifact-rich exhibits that engage visitors from all walks of life while exploring three humanities themes: (1) how physically challenging, dangerous jobs offered by the fishing industry were a gateway to a new life and new opportunities for immigrants from around the world; (2) how technological innovations impacted people's work and natural resources; and (3) how man's struggles with nature as embodied by the image of the Gloucester fisherman have become part of our cultural identity.

In combing through resources available at the Cape Ann Museum, planners uncovered

artifacts and archival materials that will enrich future exhibitions and expand points of entry for understanding the history of the fisheries on Cape Ann and its impact on the community. One resource that emerged and will hopefully become the center of a new exhibition was a collection of materials related to the mackerel seiner *Thelma*, an auxiliary powered vessel that fished out of Gloucester from 1928 to 1936. The collection includes handwritten logbooks, photographs and newspaper clippings. Using the materials, visitors will be able to explore fishing methods used on board *Thelma*, details regarding day-to-day life on board the vessel, and the economic opportunities and risks of working on a mackerel seiner during the 1920s and 1930s. The collection of materials was donated to the Cape Ann Museum in 1982 by Louis Marty Welch, the *Thelma's* engineer.

The Museum staff looks forward to moving ahead with this project as part of anticipated renovations to the Elm Street wing of the Museum facility.





(left to right) Director of the Library and Archives, Molly Hardy and Maritime Curator Erik Ronnberg welcome the arrival a collection of nineteenth-century Cape Ann newspapers (1825-1900), gift of the American Antiquarian Society; Aris Demetrios, son of Virginia Lee Burton and George Demetrios, flanked by his wife Ilene Nagel and sister-in-law, Eleanor Demetrios at *The Little House: Her Story* opening reception; Members enjoy a Lanesville Quarry Walk led by Museum board member, Suzi Natti; Folly Cove Designer Lee Steele (right) with a friend at *The Little House: Her Story* opening reception; A young visitor enjoys original book illustrations from the *Once Upon a Contest* exhibition.

Margaret Leeco
 Peter and Roxanna Leone
 Richard Metzinger and
 Janet Lepanto
 Mary Ellen Lepionka
 Sandra Lepore
 Roger and Susan Levine
 Monty Lewis and
 Camilla MacFadyen
 William Lillis
 Marilyn Lincoln
 David and Susan Lincoln
 Diane Lindquist
 Carol Linsky
 Barbara Littlefield
 Elizabeth Littlefield
 Sarah Longnecker
 Edwin Jytkka and
 Deborah Loomis
 Richard Lord
 Joan Low
 Marianne Lufkin
 Judith Lurie
 R.J. and Leslie Lyman
 Tammy MacKenzie
 Robert and Maryellen Magner
 Axel Magnuson and
 Sylvia Viresendorp
 Linda Mahajan
 Donald Maier
 Bruce Maki and Ann Piette
 Harold and Cynthia Mallette
 Donald Boyle and
 Judith Maloney Boyle
 Theodore Lane Manning

Michael March and
 Elizabeth Mehlin
 Jeannette Marchant
 Carleen Marchi
 Virginia Markell
 Adah Marker
 Stan Marks
 Susan Marr
 David and Louise Marsh
 Linda Marshall
 Lee Marshall and
 Paul Cary Goldberg
 Jeffrey Marshall and Phoebe Potts
 Deborah Marston
 Richard Shaw and Esther Martin
 Miguel and Kristina Martinez
 James and Judith Masciarelli
 Bertrand and Marilyn Mason
 Karen Matthews
 Martha Mazzone and
 Carolyn Mazzone
 James McCaffrey and
 Siobhan McAuley
 Henry and Mary McCarl
 Clifford McCarthy
 Roy and Shelagh McCauley
 James and Pauline McCready
 Kevin McDonough and
 Susan Lillis
 John and Aria McElhenny
 Paul and Catherine McGearry
 Mary Jane McGlennon
 Heidi McGrath
 Walter and Joyce McGrath
 Dennis McGurk

Athena McInnis
 Pamela McIntosh
 Ann McKay
 Carol McKenna
 Kevin Hutchinson and
 Kathy McLear
 Carole Anne McLellan
 Carol McNeill
 Roger McNeill
 Lisa McRae
 Jane Mead
 Thompson Mechem and
 Elizabeth Spofford
 Natalie Medici
 Marvin Kushnet and
 Linda Medwid
 Edmund and Dee Meeker
 Michael and Heli Meltsner
 Ruth Menicocci
 Cecily Merrell
 Alexandra Meyers
 Richard Mieli
 JoAnn Millen
 Joanne Mills
 Margaret Mills-Michael
 Nicholas Grossi and
 Ann Marie Mires
 Patricia Mitchell
 Helen Mitchell
 Robert Monahan
 Janet Montgomery
 Frances Moon
 Michael Moonves and
 Baba Davenport
 Kathleen Moore

Peter and Alicia Moore
 James Moore
 Wendy Morgan
 Veronica Morgan
 Anne Morin
 Mary Lou Morison
 Susan Morreale
 John and Shirley Morris
 Kimberly Moses
 Priscilla Moulton
 Eben and Heather Moulton
 Michael and Linda Mouris
 Dale Movalli
 Sarah Mowitt
 Ed Mowrey
 William and Linda Mueffelmann
 Ellen Mugar
 Katharine Mullen and
 Deborah Hardy
 Paula Mullendore
 Christiane Munkholm
 Daniel and Emily Murphy
 Walter and Linda Murphy
 Avis Murray
 Judith Nahas
 Scott Nason
 Judith Nast
 George Neilson
 James and Mary Bridget Nelligan
 Hart Nelsen
 Dorothy Nelson
 Duncan and Beebe Nelson
 Mark Nelson and David Oliver
 Madeleine Newell
 Katharine Newhouse



Charles and Suzanne Newman
 Elizabeth Nicastro
 Gloria Nicholas
 Ann Nichols
 Andrew and Catherine Nickas
 Stephen and Susan Niemi
 Sandra Northrup
 Judy Norton
 Carline Ober
 Gail O'Docherty
 Roy Campana and Kerry O'Donnell
 Molly O'Hagan Hardy
 Elaine Ohlson
 Molly Oldfield
 Michael O'Leary
 Susan Oleksiw
 Judith Oleson
 Jim and Trudi Olivetti
 Ann Olson
 Margaret O'Malley
 Peter and Charleen Onanian
 Brian O'Neill
 Sally O'Neill
 Mark and Mary Elizabeth Osborne
 Donna O'Sullivan
 Don and Melissa Palladino
 James Paradis
 Phyllis Parady
 Norma Parisi
 Christy Park
 Robert and Donna Parry
 Elizabeth Passmore
 Phyllis Paster
 William Paulson
 Andrew Kaelin and
 Jane Paznik-Bondarin
 Martha Peabody
 Chandler Davis and
 Deborah Pearce
 Jamie Mayer and Martha Peer
 Isabel Perkins

Roy Perkinson
 Robert and Susan Perry
 Candace Perry
 Joseph and Linda Pesce
 David and Alison Pesky
 Georges Peter and
 Carolyn McClintock Peter
 Lawrence Peterson, Jr.
 Cheryl Petras
 Lorna Phillely
 George and Joann Phillips
 Steven Phillips and Amy Gault
 Richard O'Dwyer and
 Katharine Pickering
 David Pleuler and Eileen Murphy
 Joan Pohas
 Eric Schoonover and
 Susan Pollack
 Joanne Ponte
 Patricia Poore
 Jonathan Pope
 Dale and Leslie Pope
 Carole Porter
 Keith Powers and Jacquelyn Ball
 Ellen Preston
 Mary Alice Price
 Bob Prichard
 Esther Proctor
 Jane Pulkkinen
 Mary Putonen
 Richard and Susan Quateman
 William and Jennifer Rand
 Jon Rassler and Carol Kowalski
 Laurie Raymond
 Barbara Reed
 William and Jane Remsen
 James and Kali Reynolds
 Mary Rhinelander
 Frederic and Patricia Rhinelander
 David and Ann Rhinelander
 Katherine Richmond

Thomas Riggs
 Kerri Rist
 Karen Ristuben
 Heath and Heather Ritchie
 Carlos and Diane Riva
 Gary and Karina Roark
 George and Daphne Roark
 Roger Travis and Carol Roberts
 Didier Tellier and
 Julia Williams Robinson
 Judy Robinson-Cox
 Meredith Roche
 Martha Rodweller
 Harold and Linda Rogers
 Elizabeth Roland
 Jane Rollins
 Barbara Rose
 James and Julie Rose
 Marie Rose
 George Rosen and Barbara Gale
 Dale Rosen and Terry Segal
 Steve and Joan Rosenthal
 Alan and Sue Ann Rosenthal
 Doreen Ross
 Margaret Ross
 Nancy Rossi
 Jon and Bonnie Rotenberg
 Bradford Rowell
 Edward and Susie Rowland
 Ellin Royds
 James Royer
 Kristy Rudel
 Robert Ruderman and
 Susan Caruso
 Lynn Runnells
 Paul and Barbara Russell
 Robert Russell
 Doris Rust
 Donald and Kathleen RuzECKI
 Robert and Patricia Ryan
 Charles and Jane Rzepka

Kathleen Sacco
 John Salisbury
 Patrick Salony and
 Christine McGrath
 Christa Sammons
 Kathleen Santo
 Tom Schaefer
 Thomas Schmidt
 Peter and Deb Schradieck
 Grace Schrafft
 Judith Schroeter
 William Schulz and Beth Graham
 Paul Schwartz and Carole Rein
 Paul Hackett and
 Jessica Schwarzenbach
 James Liebmann and Gail Scully
 Sally Seamans
 John and Marcia Seward
 Steven and Eileen Shapiro
 Stanley and Judith Shapiro
 Karen Sheldrick
 Jeff Weiss and Marilyn Short
 Dianne Shortall
 Edward Shoucair and
 Kaye Lynn Johnson-Shoucair
 Davina Louise Shuman
 Christine Sidon
 Marcia Siegel
 Anne Siegel
 Manuel Simoes
 MacGregor Freeman and
 Joan Sindall
 Richard and Priscilla Singleton
 Bruce and Kathy Slifer
 Richard Sloane
 Isabel Sloane
 Errol and Yvonne Smikle
 Elizabeth Rice Smith
 Nancy Smith
 Robert and Eileen Smith
 Bruce Novak and Sally Smithwick

MEMBERS/CONTRIBUTIONS

Wayne Soini
 Andrew Soll
 Joseph and Helen Soussou
 JoAnn Souza
 Corey Spence and
 Christopher Dean
 Newt and Judith Spurr
 Danuta Stachiewicz
 Jeremy Stahlin and
 Judith Fleischman
 Mark and Janet Standley
 Martha Stearns
 Will and Kerstin Stebbins
 June Steel
 Charles Steiner
 John and Candace Stella
 Laurel Stevens
 Doug Stewart and
 Coco McCabe
 Margaret Stocker
 Mark Stolle
 Sandra Stolle
 Jeff and Naomi Stonberg
 Ellen Stone
 Brad and Beth Story
 Dave and Dani Stotzer
 Pamela Stratton and
 Kathryn Tuck
 Judith Strohm
 Patrick and Dolores Sudbay
 Margaret Sullivan
 Gerry Sullivan and Lois Dagle
 Bernice Svedlow
 Martha Swanson
 Larry and Marilyn Swift
 Paul Sylva and Christine Becker
 Monica Synnott
 Elizabeth Walker Talbot
 Holly and Laura Tanguay
 Anthony Tappe
 Norma Tarr
 Robin and Martha Tattersall
 Jeff and Ruth Taylor
 Susan Teel
 David and Rita Teele
 Catherine Ten Eyck and
 Elizabeth Marchant
 Mary Thielscher
 Anne Thomas
 Mark Jones and Marcia Thomas
 Samuel and Elizabeth Thorne
 Kim Tieger
 James Tolman
 Ed Touchette
 John Cunningham and
 Catherine Tousignant
 David Tower and Robin Hoffman
 Robert and Joyce Tuffley
 Susan Turnbull
 Horace Turner
 George and Suzanna Ulrich
 Jeffrey Kern and
 Miranda Updike

Diane Usewick
 Christine Vachon
 Juni Van Dyke
 Laura Ventimiglia
 William Porter and Bette Viano
 Robert Viator
 Regina Villa
 Blair and Sarah Villa
 Dorothy Von Rosenvinge
 Hazel Von Rosenvinge
 Theodore and Linda
 Von Rosenvinge
 Ralph Cole Waddey and
 Ana Alakija Waddey
 Maura Wadlinger
 Sage and Linda Walcott
 John and Ann Ward
 James Ward and
 Anne DeSouza Ward
 J.P. and Dwight Ware
 Rokhaya Waring
 Suellen Wedmore
 Norman and Ruth Weeks
 Lee and Judith Weinberg
 Richard Weiss and
 Barbara McLaughlin
 Richard and Rosemary
 Weissman
 Diana Welsh
 Mary Ann Wenniger
 Anne White
 Marit White
 William and Deborah Whiting
 Terri Whitney
 Michael and Amy Wiklund
 Dan Wilcox
 Phil Wilde
 Kirk Williams
 Beth Williams
 Peter and Lynne Williams
 Susan Willis
 Margaret Willmann
 George and Penny Wingate
 David and Enid Wise
 Helen Wiseman
 James and Janet Wolahan
 Jane Wolf
 Ariane Wolff
 Martha Wood
 Bruce and Brenda Woodbury
 Susan and Ned Woodman
 Jane Woolway
 Alyssa Wostrel
 Sib and Judy Wright
 Martha Wright
 Jim and June Wulff
 Elliot and Janice Wyner
 Carole Yeager
 Christine Zampell
 Carol Ann Zapustas
 Samuel and Ann Ziergiebel



(from top) *Quick Steps & Ballads*, a performance of music and song from Fitz Henry Lane's era, selected from sheet music designed by Lane; *Second Saturday* programs welcome Cecila Barker and Eva Hansen; Docents Elaine Ohlson and Joan Gorga enjoy a laugh with Carmine Gorga; Laura Stephanio Kerr and her daughter, Lisa McRae, with George Demetrios' bust of Laura at age 12.

DONORS

The Museum gratefully acknowledges the donors who have supported the Museum with gifts this year—January 1, 2018 to December 31, 2018.

\$100,000+

Norman and Monever Chambers
William and Janet James

\$50,000 to \$99,999

Estate of Arnold Whitman Knauth
John F. Haley, Jr. and
Anne Rogers Haley
John Rando, Jr.
Arthur Ryan
Ernst and Gail von Metzsch

\$10,000 to \$49,999

Dan and Kathelen Amos
Anonymous
J.J. and Jackie Bell
Theodore and Jan Charles
Linzee and Beth Coolidge
Dusky Foundation
Mary Craven
Adele Ervin
Charles and Caroline Esdaile
Henrietta Gates and
Heaton Robertson
Thomas and Caroline Hovey
William and Anne Kneisel
Nancy LeGendre and
Walter Herlihy
Brace Cove Foundation
Selina Little
Angus and Leslie Littlejohn, Jr.
Littlejohn Family Foundation
Elizabeth Moore
Susanna Natti and Alan Willsky
Margaret Pearson
George and Nancy Putnam
Hinda Simon
Richard and Donna Tadler
Cornelius and Corinna Waud
Clive Wood and Stella Martin
Thomas and Kristin Zarrella
Edward Zuker and
Judi Ross Zuker

\$5,000 to \$9,999

Robert and Hope Bachelder
Clement and Stephanie Benenson
Vesper Foundation
Kermit and Glenys Birchfield
John and Mollie Byrnes
*Peter and Elizabeth
Tower Foundation*
John and Carroll Cabot
Samuel and Rebecca Campbell
Ada Howe Kent Foundation
Richard and Deborah Carlson
Allan and Kathe Cohen
*Selma and Bayness
Andress Foundation*
Chad Cowan and Lindsey Pearce
John and Lee Cunningham
Betty Ellis
*William V. and Betty M.
Ellis Foundation*
Dominic and Tamsen Endicott
Darius and Stephanie Gaskins

Alec Dingee and Susan Gray
Caldwell Foundation
Garth and Lindsay Greimann
John and Debbie Henning
Peter and Gerry Herbert
*Stella and Charles
Guttman Foundation*
Samuel and Betsy Holdsworth
Peter Kiely
Catherine Lastavica
Milt and Helen Lauenstein
Joseph and Eileen Mueller
Susan Pollack and Eric Schoonover
Kanter Kallman Foundation
Robert and Ashley Scott
Stephen and Lisa Smit
Eijk and Rose-Marie van Otterloo
James and Ginny Welch

\$1,000 to \$4,999

Filiberto Agusti and Susan Whilton
Peter and Lisa Alcock
Lawrence and Elizabeth Allen
Robert Amory
Babson Historical Association
James and Gale Bacon
Christine Bancheri
Catherine Bayliss and
Michael Lipton
Walter and Gina Beinecke
Stephen and Jill Bell
Karen Bell
John and Jan Bell
Deborah Blake
James and Jan Bordinaro
Kevin and Rosemarie Bottomley
Michael Bresnan and
Mary Ann Sherry
Michael and Cathy Brown
Thomas Burger and André Robert
Gibson and Sarah Carey
Thad Carpen and Susanne Guyer
George and Judy Carter
Bettie Cartwright
Capricorn Foundation
Robert Chandler and Ronda Faloon
Peter and Katherine Coakley
John and Bayard Cobb
David Condino and
Margaret Brady
Pearce and Phoebe Coues
Christopher and Bonnie Covington
Robert Cox and Karen Bell
Robert Crandall
Thomas and Patricia Cronin
William and Ellen Cross
Deborah DeCotis
Jane and Chris Deering
John Easton and Sem Sutter
Barbe Ennis-Abramo and
Stefan Abramo
Kenneth and Alice Erickson
Edmund and Maryellen Feeley
Peter Feinstein and
Miriam Weinstein
Deborah Freeman

John and Kathy Galligan
Ian and Josie Gardiner
Bart and Sue Geer
Mark Glovsky and Livia Cowen
Sargent and Susan Goodchild
Stephen and Nina Goodick
John Hall
Stephen and Marion Hall
Denison and Lynn Hall
Katharine Hamilos
James and Leslie Hammond
James Hand
William and Rose Hausman
Jerry and Margaretta Hausman
James and Mary Hayes
Harry and Mary Hintlian
Jeff Hotchkiss
Robert and Pamela Irwin
Stephen and Christine Kahane
Stephen Kaloyanides
Diane and Gary Kaneb
Patricia Murphy Kerstein
Chris and Susan Klem
Peter and Bobbi Kovner
Andrew and Mary Lenhardt
Stephen and Sigi Lindo
Mark Lindsay and
Martha Morgan Lindsay
Jackie Littlefield
Ann Lord
Joan Lovejoy
Paul and Christine Lundberg
William and Nancy Lynch
Walter Manninen
Lawrence and Barbara Maver
Barry and Carol Mawn
Michele May and David Walt
John and Mary Ann McCormick
Daniel and Jenifer McDougall
Kimberly McGovern and
Frank Scherckenbach
Angus and Jeannie McIntyre
Katherine McMillan
Denise Merlino-Felock and
John Felock
Anne Meyer and John Ockenga
Mill River Foundation
Richard Mills and Amy Bell
John and Betty Minnick
Christine Moore
Joseph and Allison Mueller
Lee Kingman Natti
Gregory and Stephanie Neal
John and Pam Newberry
Myranda O'Bara and Jay Somers
Carolyn Paradise and
James Wayrynen
Tami Paumier and Glen Warren
John Curtis Perry and
Sarah Hollis Perry
Patricia Petrou
Barrett and Lydia Petty
Samuel and Susan Philbrick
Anthony and Clare Quinn
Eliza Rathbone
Judson and Lisa Reis

Elizabeth Rhineland and
Peter MacEwen
Joseph and Maggie Rosa
Richard and Anne Rosenfeld
Roger Salisbury and
Judith Monteferrante
Stuart Scantlebury and
Lecia Ann Turcotte
Buzz and Lorraine Schulte
Jack and Shelagh Schylling
Pauline Sheedy
John and Judy Shields
Thomas and Lyn Shields
William and Judith Shipman
Cary and Christopher Smallhorn
Tina Snider and Scott Zamore
Steve and Linda Sojda
Andrew Spindler and Hiram Butler
James Sprague
James and Kate Stavis
Candace and John Stella
Campbell Steward
Ian and Peggy Strachan
Peter and Lynda Surdam
Ingrid Swanson
David and JoEllen Sweet
William and Jolinda Taylor
David and Emily Tyree
Linda Walker
Michael and Tee Wall
Scobie Ward
David and Mary Warner
Kenneth Weiss
Peter and Thi Linh Wernau
Brent and Linda Wilkes
John Willis, Jr.
Chip and Margaret Ziering

\$500 to \$999
Annisquam Sewing Circle
Heather Atwood
Stephen and Polly Barbara
Geoffrey Bayliss
Selma and Leslie Bell
Ted and Judy Bidwell
Elana Brink
Paula Cole
Donald and Marge Cregg
Phil and Eve Cutter
George Davis and Lisa Bonneville
Michael and Mona Faherty
Justin and Kari Gale
James and Katherine Groves
Carlisle and Judy Gustin
Douglas and Susan Hall
Bonnie Hardy
Terence and Melanie Healey
Herb and Meg Hollender
Judith Hood
William Hovey
Charles and Nancy Hovey
Stephen and Janet Langer
George Langer and Karen Wise
Rick and Laney Makin
Noel Mann and Daan Sandee
Andrew and Peggy Matlow
Elton and Connie McCausland
Scott and Mimi McDougal
Jay McLaughlan and Sara Stotzer
Amy Moore
George and Joann Phillips
David Porper
Ronald and Mimi Pruett



(left to right) A participant in artist Mary Rhinelander's blockprinting class examines her work; Docent Selma Bell and Helen Garland chat at former Library/Archivist Stephanie Buck's retirement party; The Museum Shop is not to be missed—any time of the year!

Christopher and Esther Pullman
 Raj Razdan
 Benjamin and Courtney Richardson
 John Ronan and Sandra Dahl-Ronan
 Marie Rose
 Michael and Patty Rosenblatt
 David and Marie Louise Scudder
 Michael and Diane Slezak
 Scott Smith and Christopher Hadley
 Trina Smith
 Eileen Sporing and Jocelyn Ramella
 Randall and Laura Stevens
 Howard Thomas
 Yuri Tuvim and Marie Louise Giuliano
 Tom Vawter and Anne Hadley
 Patrick Vives and Rebeca de Vives
 Clara Wainwright
 Kristen Wainwright
 Stephen and Anne Warhover
 Michael and Candace Wheeler
 Matthew Whitlock and Penny Neal
 Beth Whitlock
 Peter and Winky Whitman
 Geneva Whitten
 William Yates and Tamson Gardner
 Carole Yeager

\$250 to \$499
 Gail Anderson and Bill Effner
 Alison Anholt-White and Nick White
 John Appleton
 Ronald and Mary Atwood
 Duncan and Mara Balsbaugh
 Ryan Bardsley and Lindsey Shaw Bardsley
 Robert and Leslie Beatty
 Ed and Sheila Becker
 Beate Becker-Vavak
 Jonathan Bell and Veronique Aubert
 David and Lida Bernard
 Thomas and Becky Bernie
 Allan and Phyllis Bezanon
 Billings Bramhall, Jr.
 Thomas Brooks and Karen Newman
 Robert and Barbara Brown, Jr.
 Michael and Betsy Brown
 Erich and Jennifer Buddenhagen
 William and Sharon Burton
 Joseph Butler and Nancy Davis
 John and Kate Cabot
 Janice Cane and Walter Hess
 Kevin and Kathleen Clancy
 William and Betsey Colby
 Stephen and Linda Collins
 Stuart and Cynthia Conant
 Diane and Kevin Connolly
 Diana Connors

Nathaniel and Catherine Coolidge
 Gregory and Catherine Crockett
 Frank and Susan Crotty
 Martin and Natalie Daley
 David and Katherine Davis
 John and Sharon Day
 James and Sharon Deveney
 Sarah Dunlap
 Albert Ellis and Anne-Seymour St. John
 Thomas Ellis
 Robert and Surrey Elwell
 Mary Emmons
 Donna Fairservice
 Diane Faissler
 Tracy Faloon
 Bonnie Fendrock and Allan d'Andrea
 William and Lyn Fenollosa
 Alfred and Deborah Fichera
 Newell and Kate Flather
 Elizabeth Fragola and Nicholas Senzamic
 Peter and Annette French
 Martha Frigolato
 Marion Frost and Martha Frost
 Bruce and Elizabeth Gable
 Jonas Gavelis and Bonnie Sylvester
 Philip Goldsmith
 Mark and Janet Gottesman
 Joyce Griffin
 Henry and Gale Guild

Rayna and Kevin Hannaway
 Brian and Kathleen Hines
 Patricia and Randy Hock
 Harry and Judith Hoglander
 Kathryn Hollett
 Paul and Betsey Horovitz
 Ken and Billie Hruby
 John and Sally Huss
 Thomas Janis and Joseph Weglarz
 Jonathan Katz and Norah Wylie
 Thomas and Laura Kerr
 Thomas and Marianne Kiely
 Jen Kirk and Stephen Labonte
 Miles and Joan Kulukundis
 Gregory and Sigrid Lambert
 Lisa Lambert and Joan Kitsis
 Fred and Jill Lovejoy
 Susan Lufkin
 Daniel and Marcy Lyman
 Jane Lyman and Lisa Kenyon
 Barbara and Matthew Lynch
 Rob Martin and Trish Roach
 James and Judith Masciarelli
 Robert and Eileen Matz
 David and Janet McAweeney
 Henry and Mary McCarl
 Roy and Shelagh McCauley
 Chip and Eliza McConnell
 Dennis McGurk
 Susan McKain and Ken Steiner
 Robert McPhail and Susan Guest
 Wilhelm Merck and Nonie Brady



Jon and Carol Morse
 Sarah Mowitt
 Peter and Nadine Mowschenson
 Ann Nichols
 Craig and Lillian Olmsted
 Elizabeth Olson
 John and Jane Olson
 Don Palladino
 Olivia Parker and
 Helen Parker Brown
 Isabel Perkins
 Thomas Perkins
 George and Kathy Putnam
 Robert and Susan Reece
 John and Jean Rees
 David and Ann Rhineland
 Brenda Richardson and
 Kenneth Slater
 Beth Ripp
 Bud and Margaret Ris
 David and Barbara Roberts
 Omar Roca and
 Mariann Bucina Roca
 Paul Romary and Douglas Vooyo
 Jon and Bonnie Rotenberg
 Caleb and Natalie Rulli
 Patrick Salony and
 Christine McGrath
 Chris and Eroica Schenck
 Gail Scully and James Liebmann
 Dianne Shortall
 Tom and Sally Simons
 Richard and Priscilla Singleton

James and Martha Smeallie
 David and Ginni Spencer
 Newt and Judith Spurr
 Suzanne Stacy
 Michael Stelluto
 Nancy Strisik
 Matthew and Sarah Swift
 Lynn and Joan Swigart
 Janet Tsui Tang and
 Wayne Stimens
 David and Rita Teele
 Ann Teixeira
 Miranda Updike and Jeffrey Kern
 Douglas and Priscilla Viets
 Graham and Jan Walker
 Robert and Margaret Wallis
 Pierre and Nancy Warny
 William and Deborah Whiting
 Patsy Whitlock

\$100 to \$249

Robert Ackerman
 Elizabeth Bonnie Akerley
 Meredith Allen and Jerry Cook
 John and Lenice Allen
 Barbara Almy
 Wasim Altaf
 Edward and Mary Anderson
 Margaret Anderson
 William and Yvette Anderson
 Robert and Judy Anderson
 Laurie Andrews
 Rodney and Katherine Armstrong
 Judith Avery
 James and Elizabeth Ayer
 Katherine Babson
 Peggy Badenhausen and
 Tom Kelly
 Stephen and Marie Bahlke
 Gordon Baird and Joe Ann Hart
 Susan Baker-Leavitt
 William and Susan Baldwin
 Tom Balf and Donna Heaney
 Ann Banks
 Mary Barcus
 James and Chris Barker
 Les Bartlett
 Sally and David Benjamin
 Linda Berard
 Karen Berger
 Edward and Linda Berger
 Melvin and Laura Bernstein
 Bonita Betters-Reed
 Bradford Bigelow
 Louise Blodget
 Guy and Karen Bradford
 Loring Bradlee
 Bruce and Joan Bradshaw
 Joseph and Judith Brain
 Janice Brand and Robert Brady
 Jonathan Brandon and Scheft
 Peter Brau and Bethany Fritzsche
 Chester and Anthea Brigham
 Joseph Brooks
 Robert and Faye Brophy
 Steven and Kenneth Brown
 Lois Brynes and Serena Hilsinger
 Joan Buchanan
 Sunniva Buck and Adam Costello
 William and Gerrie Butman
 Elaine Byrne
 James and Charlene Callahan

John Cannon
 Randolph Carr and
 Gabrielle Barzaghi
 Anne Babson Carter
 Robert Cashman and
 Lynn Browne
 Philip Chalmers and Susan King
 Katelyn Chambers
 Gertrude Clemens
 Suzanne Clerkin and
 Raymond Pape
 Irma Cohen
 Frances Colburn
 Jim and Stephanie Cole
 Hugh and Joan Collier
 Pat and Anna Conlon
 John and Polly Connors
 Lori Correale
 Eliza Cowan
 Evelyn and Barbara Cox
 Ray Crane and Monica Lawton
 Peter Creighton
 Suzanne Crocker
 Jo-Anne Crystoff and
 Guy Hermann
 Torrance Cullen
 Ronald and Joan Curhan
 Tom and Treacy Curlin
 Henry and Judith Curtis
 Brian and Debra Darby
 Susan Davies and Rick Talkov
 Nancy Davis
 Brian and Beth Davis
 Edmund and Tracy Davis
 Craig and Laurel Deery
 Michael DeFalco and
 Jacqueline Ganim-DeFalco
 Steven Dieck and Hatsumi Miura
 Vicki Diez-Canseco
 Nina L Doggett
 Peter Dorsey
 Ed and Jody Dove
 Christina Doyle
 Francis Duehay and Jane Lewis
 Patricia Dumas and Esther Joyce
 J.P. and Andrea Dunn
 Sue Durkin
 Charles and Lucille Duval
 William and Deborah Ebeling
 Richard Einhorn and
 Julie Nagazina
 Carleton and Virginia Ekborg
 Charlotte and Larry Eliot
 Barbara Elleman
 Sheryl Ellis
 Jolene Erickson and
 Emily Erickson
 Edward Everett
 Ronald and Sandra Faloon
 Jay and Helen Featherstone
 Ann-Margaret and
 Francis Ferrante
 Adam Fieldsteel and Irene Mulvey
 William Finch and Carol Rose
 Kristine Fisher and
 Richard Crangle
 Christian and Michelle Fisher
 Mary Flaherty
 Thomas Flaherty and
 Elizabeth Lalik
 Elaine Byrne
 Pamela Foster

Karl Frank
 Audrey Fraser and Richard Stoloff
 Jennifer Fremont
 Hollis French
 Peggy Friedland
 William and Judy Friend
 Martha Frigoletto
 Germaine Fritz
 Roger Garberg and Marion Sibley
 Dolf and Elizabeth Garcia
 David Gardner and
 Patricia Bridgman
 Judith Garland
 Helen Garland
 Timothy and Katerina Gates
 Joseph and Catherine Geary
 Myron and Eileen Geller
 Robert Gillis, Jr. and
 Pixie Harrington
 David and Regina Girard
 Gloucester Education Foundation
 Lia Duca Glovsky
 Josette and Louis Goldish
 Leonard and Cheryl Goodman
 Peter and Jan Goodwin
 Lilli Gordon
 Michael and Karen Gorton
 Robert and Arlene Gray
 Robert and Johana Griffith
 Paul Gross and Cornelia Tenney
 Robert and Judith Gwozdziwicz
 Michael and Elizabeth Habich
 Joseph Hadley and
 Anne Marie Reilly
 Isabella Halsted
 Gay Peters Hammond and
 Frederick Hammond
 Margaret Hansen
 Jane Hardy and Christopher Olney
 Stephen and Susan Harris
 Ann Harrison and James Starkey
 Charles Hay and Joanne Crerand
 Stephanie Hecht
 John and Joline Hentschel
 Bruce and Meg Herman
 Richard Hermon-Taylor and
 Harriet Bundy
 Janet Herrmann
 Richard Heuser
 Toby Higgins
 Russell and Melissa Hobbs
 Arthur and Eloise Hodges
 Eric and Hilarie Holdsworth
 Harriet Holdsworth
 John and Elizabeth Holmberg
 Martha and Thomas Hooper
 Peter Hornbeck and Martha Leven
 Israel and Gillian Horovitz
 Stephen and Jeanne Howard
 Gordon and Jane Hugenberger
 Daniel and Priscilla Hurley
 Jean and Victor Hurst
 Sally Jackson
 Elliott and Mary Jacobson
 Robert Jenness
 Sandra Jesse
 Patricia Johnson and
 Jeff Henderson
 Steve and Carolyn Johnson
 Karen Johnson
 Carol Judd
 Ken and Cathy Kaplan

THE ALFRED MANSFIELD BROOKS SOCIETY



Alfred Mansfield Brooks (1870–1963), long time president and curator of the Cape Ann Museum, was responsible for assembling what would ultimately become the largest and finest collection of works by marine artist Fitz Henry Lane (1804–1865). The AMB Society was established in 2009 to honor the generosity of Robert L. and Elizabeth French and to serve as an acknowledgement

of gratitude to the long line of donors who have shaped the Museum's collection. The Society recognizes those who have made a donation of art, artifacts or archival materials, or who have provided funds for the purchase or conservation of such at a minimum of \$10,000 on or after September 2009.

Raymond Agler and
John Carter
Robert Amory
Willard and Linda Andrews
Diana Bell
J.J. and Jackie Bell
John and Jan Bell
Karen Bell
Timothy Bell
Kermit and Glenys Birchfield
Estate of Dorothy A. Brown
Ninon Chaet
Grover Cleveland and
Ellen Cook
Linzee and Beth Coolidge
Mary Craven
William and Ellen Cross
Lindsay Crouse and Rick Blue
Ronald and Joan Curhan
Aris Demetrios and
Ilene Nagel Demetrios
Jonathan and Louisa Fairbanks
Hilarie Fairbanks-Burton and
Tim Burton
Kristine Fisher and
Richard Crangle
Jonathan French
Peter and Annette French
Deane Hancock French
Ian and Josie Gardiner
Helen Garland
Henrietta Gates and
Heaton Robertson
Estate of Tamara Greeman
Myra Hall
James Hand
Bruce and Meg Herman
Sheila Pidgeon Hill
Cindy Holloran
James Hooper
William and Janet James
Joan Klimann
Jan Koch-Wester and
Diane Chen Koch-Weser
Estate of Richard Kuehne

Milton and Helen Lauenstein
Paul Lohnes
Meg Lustig
Estate of Constantine Maletskos
George Maletskos
Walter Manninen
John and Ethel Martin
Alfred Mayor
Gail Mazur
Daniel and Jenifer McDougall
Mary Jane McGlennon
Donald McPhail
Joseph Mesquita
Hugh Morton
Manton Foundation
The Estate of Anna Crouse Murch
Estate of Anne H. Oaks
Amy Oaks
James Oaks
Lawrence Oaks
Martha Oaks
William Oaks
Margaret Pearson
Susan Pollack and
Eric Schoonover
Kanter Kallman Foundation
John Rando
Rebecca Reynolds and
David Montgomery
Ross and Leanne Robinson
Sara Roszak
Arthur Ryan
Stephen and Virginia Sandy
Linda Schreyer
Gergely Schreyer Collection
Martha Smith
Kristi Stangeland
Ingrid Swanson
William and Roswitha Traves
The Umberto Romano
and Clorinda Romano
Foundation, Inc.
Clara Wainwright
Martin Whyte and
Alice Hogan

Jeff Kaplan and Alison McCann
Louis Kaucic and William Merritt
Susan Kent
Marilyn Kimball
Judith Kirwin
Earl and Sharon Kishida
Linda and Jerome Klein
Victoria and James Knowlton
Peter and Karen Koch-Weser
Ruth Kolodney and
Antonio Dimambro
John and Janet Koza
Vanessa Labbe
Kathleen LaBonte
Henry and Penny Lapham
Thomas and Grace Lattof
Adrian Lauterstein
Peter and Sandy Lawrence
Robert and Martha Lawrenz
Michael and Nancy Leavitt
John LeJeune and Mary Donovan
Janet Lepanto and
Richard Metzinger
Roger and Susan Levine
Herman and Ann Lilja
Susan and David Lincoln
Carol Linsky
Richard Loomis and
Pamela Mansfield-Loomis
Peter and Elaine Lucas
Richard Luecke and
Perry McIntosh
Robert Lufkin and
Marsha Bornhoff
Jonathan MacDonald
Axel Magnuson and
Sylvia Viresendorp
Mary Malone
Cara Manfredi
David Manley and Nancy Shorter
Charles Mann and Connie Dice
Michael March and
Elizabeth Mehlin
Anthony and Maria Marolda
Deborah Marston
Esther Martin and Richard Shaw
Kristina and Gene Martin
Miguel and Kristina Martinez
Marylyn and Bertrand Mason
Alex and Julie Mattera
John and Joanne Mavroides
Bing McGilvray
Mary Jane McGlennon
Heidi McGrath
Donna McIntire
Kerry McKenna and Jeffrey Logan
Kathy McLearn and
Kevin Hutchinson
Carole Anne McLellan
William McQueen and Carla Bosch
Joseph Mechem
Ted and Dee Meeker
Herb and Deborah Meiselman
David and Judy Messick
Mia Millefoglie
Bruce Miller and
Elizabeth Saunders
Lorraine Miller
Fern Miller
Merritt and Linda Miller
Stephanie Moffat
Michael Moonves and
Baba Davenport

Elizabeth Moore
Mary Lou Morison
John and Shirley Morris
Gretchen and Ned Morse
Everett and Pamela Mourss
Eben and Heather Moulton
Daniel and Emily Murphy
James and Mary Bridget Nelligan
Mark Nelson and David Oliver
Gloria Nicholas
Leslie Nicholson
Ronald Nickerson
Peter and Liz Nugent
Molly O'Hagan Hardy
Elaine Ohlson
Molly Oldfield
Jim and Trudi Olivetti
Jerrold Oppenheim and
Theo MacGregor
Robert and Frances Osten
Gregg and Susan Parsons
Kieran and Kate Parsons
Jane Paznik-Bondarin and
Andrew Kaelin
Chandler Davis and
Deborah Pearce
Dick and Dina Peinert
Eve Perkins
Candace Perry
Joseph and Linda Pesce
David and Alison Pesky
Steven Phillips and Amy Gault
David and Tammy Phinney
David and Joanna Pistenmaa
Paul andCarolynn Pitman
Ted and Kathleen Pomfret
Dale and Leslie Pope
Frederick and Barbara Pryor
William and Jennifer Rand
Robert and Susan Ranta
Kay and Martin Ray
Kinley and Bonnie Reddy
Kali and James Reynolds
Mary Rhinelander
Peter and Lucy Robbins
Robbins Nest Foundation
Sarah Robbins-Evans
Julia Williams Robinson and
Didier Tellier
Rockport Music
Harold and Linda Rogers, Jr.
Phillip and Frances Romanowicz
Bruce and Jane Rosenberg
Melvin and Martha Rosenblatt
Sue Ann and Alan Rosenthal
Margaret Ross
Ronald Ross and Mary Benham
Albert and Cynthia Roth
Dick and Olga Rothschild
Julie Rowe
Ellin Royds
Robert Russell
Neal and Didi Ryland
Peter and Deb Schradieck
Grace Schrafft
William Schulz and Beth Graham
Jessica Schwarzenbach and
Paul Hackett
Claudine Scoville
Edward Shoucair and
Kaye Lynn Johnson-Shoucair
Anne Siegel
Teresa Silverman

Mark and Annie Sinkinson
 Richard and Barbara Smith
 Derek Smith and
 Rebecca Oldfield Smith
 Russell and Rosamond Smith
 Caroline Spang
 Corey Spence and
 Christopher Dean
 Paul and Elizabeth St. Germain
 Mark and Janet Standley
 June Steel
 Charles Steiner
 Doug Stewart and Coco McCabe
 Jeff and Naomi Stonberg
 Neil and Mary Sullivan
 Catherine Ten Eyck and
 Elizabeth Marchant
 Cynthia Tennant
 Patrick Thomas
 Joyce Lloyd Thomas
 Bruce and Pat Tobey
 Claire Tomlinson and
 Edward Garner
 David and Helen Tory
 Ed Touchette
 Peter Tysver and
 Louise Wilhelm-Tysver
 Peter and Denise Vadala
 Kasie Van Fassen
 Chris and Ellen Velline
 Charles and Elaine Von Bruns
 Hazel Von Rosenvinge
 Oliver and Ellen Wadsworth
 Susan Wagner
 Anne and Jon Waisnor
 Diana Welsh
 Anthony and Joreen White
 Robert and Pamela White
 John Wilmerding
 Alan and Charlotte Wilson
 William Wimer
 George and Penny Wingate
 Heidi Winslow
 Frederick and Susan Winthrop
 Oliver and Carolyn Wolcott
 Jane Wolf
 Peter Wolfskehl and Gail Sarofeen
 Ron Wood
 Jane Woolway
 Jim and June Wulff
 Suzanne Ziemer

Up to \$100

Mim Aaronian
 Shep Abbott
 Robin Abel
 Jerry Ackerman
 Jeremy and Kathleen Adams
 David Adams and Carol Mortimore
 Sue Adams
 Raymond Agler and John Carter
 Laura Alavosus
 Deborah Aldrich
 Nubar Alexanian
 Marie Alfieri
 Francis and Rebecca Aliberte
 Catherine Allard
 Allen County Public Library
 William Allison
 Daniel Altshuler
 Peter Anastas
 Anne-Marie Anderson
 Eben and Sandy Andrew

Willard and Linda Andrews
 Alva Angle
 Dorothy Antczak
 Kathleen Gerdon Archer
 Linda Arslanian
 Isobel Baade
 James and Kathy Bacsik
 Thomas Baker and
 Sheila Golden-Baker
 Mr. & Mrs. B. Devereux Barker III
 Catherine Barker-Ross
 Henry and Liz Barron
 Robert and Mary Barthelmes
 Paula Bartlett
 Martin and Betsy Basch
 Lisa Batchelder
 Anna Vojtech Baumgaertel
 Joe Bayes and Lynda Goldberg
 John Elliott and Elisabeth Bayle
 Benjamin and Ann Baylies
 Tom Mansfield and
 Rebecca Baylies
 Peter and Janice Beacham
 Mary Beck and Wilma Busse
 William and Helen Beekman
 William and Jean Bellissimo
 Thomas Bentley
 Bill and Karen Bergenthal
 John Berges and
 Ann Leamon Berges
 Peter Bergholtz
 Sam Berman
 Margaret Bernier and
 Joanne Schulze
 Michael Bertolino
 Henry and Wendy Betts
 Beverly Farms Library
 Richard and Ellen Bianchini
 Julia Bishop
 Charlotte Bishop
 Sheila Blake
 Bernice Blitz
 Molly Blue
 Judith Bly
 Hollis Bodman
 Judith Bogage
 Robert Bosselman
 Jon Holland and Lisa Bouchie
 Linda Bourke
 Warren Boutchia
 Tracy Bowen
 Barbara Boyce
 Deborah Bradley
 Hillary Bradley
 Sally Bradshaw and
 Dottie Murkland
 Richard Regan and
 Mary Ellen Branscombe
 Lewis and Miriam Braverman
 Ronald Breault
 Donald Breen
 John and Sarah Brennan
 Barbara Brewer
 Linda Mason Briggs
 Sara Bronstein
 Elisabeth Simonds Brown
 Jonathan Brown and Julie Krakauer
 Jane Brown and Laura Brown
 Peter and Robin Brown
 Mike Perrow and
 Diana Brown McCloy
 Charles and Tina Browne
 Millicent Bruce

THE CATALINA DAVIS SOCIETY



Members and friends of the Cape Ann Museum value it for many reasons, but all share a common goal: to sustain it for the long-term. Creating a legacy through planned giving is a way to make this tangible.

Catalina Davis (1854-1932) was one of the Cape Ann Museum's early and most ardent supporters. During the 1930s, funds bequeathed to the Museum from her estate allowed for the construction of a modern, fireproof building containing a large exhibition gallery (now the Cape Ann Gallery) and an auditorium. Her generosity also resulted in the addition to the permanent collection of two oil paintings by Fitz Henry Lane, numerous pieces of early New England furniture and an array of other historically important objects, books and artwork.

Most importantly, Catalina Davis' foresight resulted in the creation of the Museum's first endowment, which to this day continues to benefit the Museum.

Established in 2015, the Catalina Davis Legacy Society recognizes individuals who contribute to the future of the Cape Ann Museum through bequests, trusts and other planned and life income gifts. Membership is extended to all who have made an estate provision for the Museum, regardless of the amount.

J.J. and Jackie Bell
 Lois Brynes and Serena Hilsinger
 William and Ellen Cross
 John and Lee Cunningham
 Adele Ervin
 Kristine Fisher and Richard Crangle
 William and Rose Hausman
 Thomas and Caroline Hovey
 Milton and Helen Lauenstein
 Stephen and Sigrid Lindo
 Amy Moore
 David Porper
 Louis Rusitzky Marital Trust
 Ann Stewart
 Ted and Juanita Tumelaire

William and Barbara Bruns
 Stephanie Buck
 David Buckles and
 Andrea Milder
 Carolyn Buckley
 Kevin Burke and
 Elizabeth O'Connor
 Robert Burke
 Charles and Maria Burnham
 Dawn Burnham
 Karen Burns
 Geoffrey and Donna Burr
 Jay and Sharon Burrill
 Stephen and Andrea Butler
 Ann Byers
 Michael and Dawn Byrnes
 Abigail Cahill
 Cathleen Cahill
 Andrew and Peggy Calkins
 William and Max Callender
 Phyllis Cameron
 Bruce and Ann Campbell
 Maggie Carbone
 Mark Carlotto
 Walter and Dawn Carpenter
 Joe Carper and Sue McKittrick
 Betsy Carter and Ira Levine
 Arnold and Kathleen Casavant
 John Casey and Paul Pinto
 Robert and Deborah Cassady
 Holly Cavanaugh
 Philip Charles
 Philip Chase
 Thomas and Claudette Chmura
 Ellen Chulak
 Salvatore and Catherine Ciolino
 Andi Clark
 Robert and Carroll Clark
 Peter and Karen Clarke
 James Clyde
 Robin Cohen
 Irene Cole and Sarah Bryant-Cole

Nancy Coleman Wolsk and
 Jane Meringer
 Jay Davis and Ruth Collier
 Pat Lowery Collins
 David Newton and June Colvin
 Frank and Judith Conahan
 Patricia Conant
 Lorna Condon
 Denis and Jeanne Conroy
 William Conway
 Beth Cooper
 Kathryn Costa
 Valerie Costello
 Edith Pucci Couchman
 Deborah Cowan
 David Cox
 Kitt Cox and Theresa Dady-Cox
 Robert Coyne
 Carol Craig
 Lisa Craig
 Jeffrey and Jo-Ann Crawford
 Robert and Ruth Crocker
 Kathy Cross
 Wes and Kim Crouse
 Virginia Crowley
 Timmie Cullen
 Damon and Melissa Cummings
 Pat Cummings
 Joan Ross Cummiskey
 Peter Mercurio and
 Linda Cunningham
 David and Judith Curtis
 Deal Cynthia and Laura Bailey
 James and Patricia Dalpiaz
 William Bazel, Jr. and Susan Dalton
 Carl and Mimi Darrow
 Katherine Noelle Davis
 Martha Davis
 Brenda Davis
 Lesley Davison
 Barbara DeCoste
 Stephen and Marta Deely

Peter and Karen DeLacy
 Robert and Ann DeMaine
 Sybille Denninger-Abed
 Therese Desmarais
 Bruce Devon and
 Veronica Nanagas-Devon
 Charles and Louise DeWolfe
 Peter Digre and Carole Shauffer
 Helene Dionne
 Carol Dirga
 George and Claire Dix
 Leo Patrick Dobbins
 Franklin and Frederica Doeringer
 Greg Sacca and Patricia Donahue
 David Donovan
 Sandra Douglas
 Richard Douglas
 Christine Downing
 Laura Doyle
 Judy Drinkwater and Betsey Smith
 Patricia Drinkwater
 James and Elise Dudley
 William and Jean Dugan
 Patricia and Liza Dugan
 Thomas Duram
 Philip and Ann Dwight
 Pat Earle
 Ruth Edmonds
 Celia Eldridge
 Thomas Ellis and Lin York
 Robert and Diane Emmons
 Elizabeth Enfield
 John and Betty Erkkila
 Sharon Erwin
 Deborah Fabi
 Barbara Farrer
 Linda Fates
 Michelle Faulds and Hailey Faulds
 Jamie and Maureen Fay
 Tom and Jennifer Fels
 Adele Ferreira
 Charles Fields

Guy and Andrea Fincke
 Prudence Fish
 Gerald Fitzgerald
 Patricia Fitzpatrick and
 Michele Bourgeau Lea
 Michalene Flaherty
 Ronald and Eleanor Fleet
 Colin Fleming
 William and Dorothy Flynn
 Ken and Rachel Ford
 Paul Forman
 Naomi Foster
 Samuel and Janet Foster
 Deb Fraize
 Charles and Mary Francis
 Rae Francoeur
 Dennis Carlberg and
 Wendy Frontiero Carlberg
 William and Bonnie Gale
 Denise Gallo
 Gail Gang
 David and Alice Gardner
 Frank and Janet Garrison
 Maureen Gedney
 Gerald Gehr and
 Eloise Licata-Gehr
 Georgetown Peabody Library
 Cornelia Gephart
 Denton Crews and
 Katherine German
 Paul Gerry
 Deborah Geurtze
 Anthony and Marjorie Giannelli
 Leonardo Gilardi
 Thomas and Beverly Gillett
 David and Judith Gillette
 Jeffrey Glaser
 Tony and Samantha Goddess
 Gretchen Golden
 Barry Goldman and
 Margaret Franklin
 Curtis Gollrad and Dale Brown



(left to right) Outgoing Cape Ann Museum Director Ronda Faloon with incoming Director Oliver Barker; A student group touring the Maritime Galleries; Artists Pia Juhl Nadel, Joy Halsted and Gabrielle Barzaghi at the *Championing Women Artists* opening reception; A young visitor surrounds himself with color.

Francisca Gonzalez-Arias
 Susan Goodall
 Francis and Evelyn Goodhue
 Powell Dixon and Heidi Goodwin
 Jane Goodwin
 Bonnie Goodwin
 Carmine and Joan Gorga
 Gary and Judith Gosbee
 Robert Gould and
 Sherry Roe-Gould
 Richard and Constance Gourdeau
 John and Rebecca Graham
 Martin Grealish
 Gary Griffis and Leslie Pearlman
 Paul and Lauren Gudonis
 Margaret Guest
 Robert and Susan Guest
 Catherine Gunn
 Clyde and Jani Gunsaulus
 Janis Guter
 Leonard Gyllenhaal
 Sarah Ann Hackett
 Lisa Hahn
 James Sirois and Jennifer Hale
 Myra Hall
 Robert and Meg Hall
 Laura Hollowell
 Joy Halsted
 Michael Hamill
 Sandra Hamilton
 Lois Hamilton
 Hamilton-Wenham Public Library
 Edward and Susan Hand
 Benjamin Hansbury
 Carolyn Harris
 Jane Harris
 James and Karen Harrison
 Edward Hart and Anita Robboy
 Katrina Hart
 Katherine Harvey
 Judson Harward
 Leslie Heffron

Robert Heinman and Susan Field
 Cynthia Hendrickson
 Craig and Joan Henkels
 William and Joy Hennessey
 Susan Herman
 Kerry Herrmann
 David Hershey-Webb
 Margaret Kippen Hinrichs
 Susan Conant Holden
 Jennifer Holmgren
 Frank and Nancy Holt
 William and Lynn Holton
 Seamus and Amy Hourihan
 Robin Hubbard
 Amy Huber
 Andrena Huntsman
 Priscilla Huston
 Marilyn Hyde
 Ipswich Public Library
 Paula Ives
 Paul and Ann Jo Jackson
 Edith Jacobs
 Sarah Jacobs
 Stephen and Deborah Jencks
 Ray Jenness
 Carl and Miranda Johnson
 James and Diane Johnson
 Roy and Linda Johnson
 Sarah Johnston
 Bruce Jones and Tina Cross
 Patricia Joseph and Mary Lawlor
 Fran Jurga
 Earl and Suzy Kadiff
 Ellen Kaminski
 Karla Kaneb
 Trish Kania
 George and Linda Kauss
 Nancy Kearns
 Michael Kelley and Marny Williams
 Kendra Kelley
 Barbara Kelley
 Jeffrey and Linda Kellner

Gillian Kellogg
 Gail Kennedy
 Phyllis Kerr
 Michael and Fiona Kerr
 Elizabeth Ann King and
 Laurie Ann Ure
 Elizabeth King
 John Klein and Liese Elerin
 Lois Lehman Knaus
 Daniel and Cathy Knowlton
 Paula Knuuttunen
 Mark and Heather Kolnsberg
 Thomas and Laura Kozachek
 Bruno and Barbara Kozel
 Norman Krause
 Anne Kreider
 Margaret Kretschmar
 David Kriebel and Margaret Quinn
 Michael and Ann Lafferty
 Mark Laliberte
 Gary Lambert
 Gene Elizabeth Landis and
 David Donavel
 Sherrin Langelier
 Virginia LaPlante
 Joseph and Margaret Larkin
 Ron Donnell and Karen Larsen
 Linda Lavery
 David Leach and Laurie LaChapelle
 Tamara Leaf
 Ellen Leaman
 Margaret Leeco
 Peter and Roxanna Leone
 Mary Ellen Lepionka
 Sandra Lepore
 Monty Lewis and
 Camilla MacFadyen
 William Lillis
 Marilyn Lincoln
 Diane Lindquist
 Barbara Littlefield
 Elizabeth Littlefield

Sarah Longnecker
 Edwin Jylkka and Deborah Loomis
 Richard Lord
 Susan Lovasco
 Joan Low
 Marianne Lufkin
 Judith Lurie
 Leslie and R.J. Lyman
 Tammy MacKenzie
 Robert and Maryellen Magner
 Linda Mahajan
 Donald Maier
 Bruce Maki and Ann Piette
 Harold and Cynthia Mallette
 Donald Boyle and
 Judith Maloney Boyle
 Manchester Public Library
 Theodore Lane Manning
 Jeannette Marchant
 Carleen Marchi
 Virginia Markell
 Adah Marker
 Stan Marks
 Susan Marr
 David and Louise Marsh
 Lee Marshall and
 Paul Cary Goldberg
 Linda Marshall
 Sophia Martz
 Karen Matthews
 Martha Mazzone and
 Carolyn Mazzone
 James McCaffrey and
 Siobhan McAuley
 Clifford McCarthy
 James and Pauline McCready
 Kevin McDonough and
 Susan Lillis
 John and Aria McElhenny
 Paul and Catherine McGearry
 Walter and Joyce McGrath
 Athena McInnis

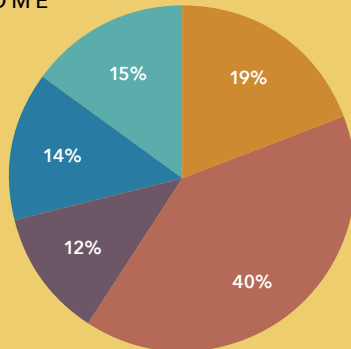


2018 FINANCIAL SUMMARY

Summary of Operating Revenue and Expense

This is not a complete financial statement. A complete, audited financial statement is available upon request or on the museum's website. Capital Campaign receipts and expenditures are not included in this summary.

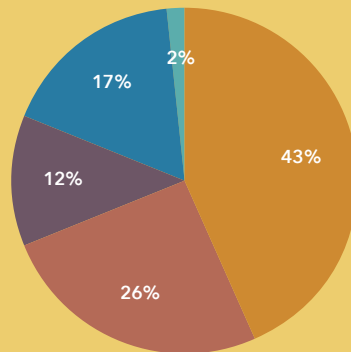
INCOME



- Membership and Admissions \$431,285
- Donations \$886,674
- Programs and Gift Shop \$262,311
- Investment Income \$313,695
- Grants and Bequests \$326,980

TOTAL INCOME \$2,220,945

EXPENSES



- Payroll \$808,680
- Administration \$473,894
- Programs and Gift Shop \$225,159
- Building Services \$316,199
- Collections \$30,816

TOTAL EXPENSE \$1,854,748

- | | |
|--|---|
| Pamela McIntosh | Peter and Charleen Onanian |
| Ann McKay | Brian O'Neill |
| Carol McKenna | Sally O'Neill |
| Carol McNeill | Mark and Mary Elizabeth Osborne |
| Roger McNeill | Donna O'Sullivan |
| Lisa McRae | James Paradis |
| Jane Mead | Phyllis Parady |
| Thompson Mechem and Elizabeth Spofford | Norma Parisi |
| Natalie Medici | Christy Park |
| Marvin Kushnet and Linda Medwid | Robert and Donna Parry |
| Michael and Heli Meltsner | Elizabeth Passmore |
| Scott Memhard and Martha Oaks | Phyllis Paster |
| Memorial Hall Library | William Paulson |
| Ruth Menicocci | Martha Peabody |
| Cecily Merrell | Peabody Institute Library |
| Alexandra Meyers | Jamie Mayer and Martha Peer |
| Richard Mieli | Roy Perkinson |
| JoAnn Millen | Robert and Susan Perry |
| Joanne Mills | James and Nina Perry |
| Margaret Mills-Michael | Lawrence Peterson, Jr. |
| Nicholas Grossi and Ann Marie Mires | Cheryl Petras |
| Patricia Mitchell | Lorna Phillely |
| Helen Mitchell | Richard O'Dwyer and Katharine Pickering |
| Robert Monahan | David Pleuler and Eileen Murphy |
| Janet Montgomery | Joan Pohas |
| Frances Moon | Joanne Ponte |
| Peter and Alicia Moore | Patricia Poore |
| James Moore | Jonathan Pope |
| Kathleen Moore | Carole Porter |
| Veronica Morgan | Keith Powers and Jacquelyn Ball |
| Wendy Morgan | Ellen Preston |
| Anne Morin | Mary Alice Price |
| Susan Morreale | Bob Prichard |
| Kimberly Moses | Esther Proctor |
| Priscilla Moulton | Jane Pulkkinen |
| Michael and Linda Mouris | Mary Putonen |
| Dale Movalli | Richard and Susan Quateman |
| Ed Mowrey | Jon Rassler and Carol Kowalski |
| William and Linda Mueffelmann | Laurie Raymond |
| Ellen Mugar | Barbara Reed |
| Katharine Mullen and Deborah Hardy | William and Jane Remsen |
| Paula Mullendore | Frederic and Patricia Rhinelander |
| Christiane Munkholm | Thomas Riggs |
| Walter and Linda Murphy | Kerri Rist |
| Avis Murray | Karen Ristuben |
| Judith Nahas | Heath and Heather Ritchie |
| Scott Nason | Carlos and Diane Riva |
| Judith Nast | George and Daphne Roark |
| George Neilson | Gary and Karina Roark |
| Hart Nelsen | Roger Travis and Carol Roberts |
| Beebe and Duncan Nelson | Judy Robinson-Cox |
| Dorothy Nelson | Meredith Roche |
| New Castle Public Library | Martha A Rodweller |
| Newburyport Public Library | Elizabeth Roland |
| Madeleine Newell | Jane E Rollins |
| Katharine Newhouse | James and Julie Rose |
| Charles and Suzanne Newman | Barbara Rose |
| Elizabeth Nicastro | Dale Rosen and Terry Segal |
| Andrew and Catherine Nickas | George Rosen and Barbara Gale |
| Stephen and Susan Niemi | Steve and Joan Rosenthal |
| Judy Norton | Doreen Ross |
| Carlaine Ober | Nancy Rossi |
| Gail O'Docherty | Bradford Rowell |
| Roy Campana and Kerry O'Donnell | Edward and Susie Rowland |
| Antony Ohman and Jim Sicord | James Royer |
| Michael O'Leary | Kristy Rudel |
| Susan Oleksiw | Robert Ruderman and Susan Caruso |
| Judith Oleson | Lynn Runnells |
| Margaret O'Malley | Paul and Barbara Russell |
| | Doris Rust |



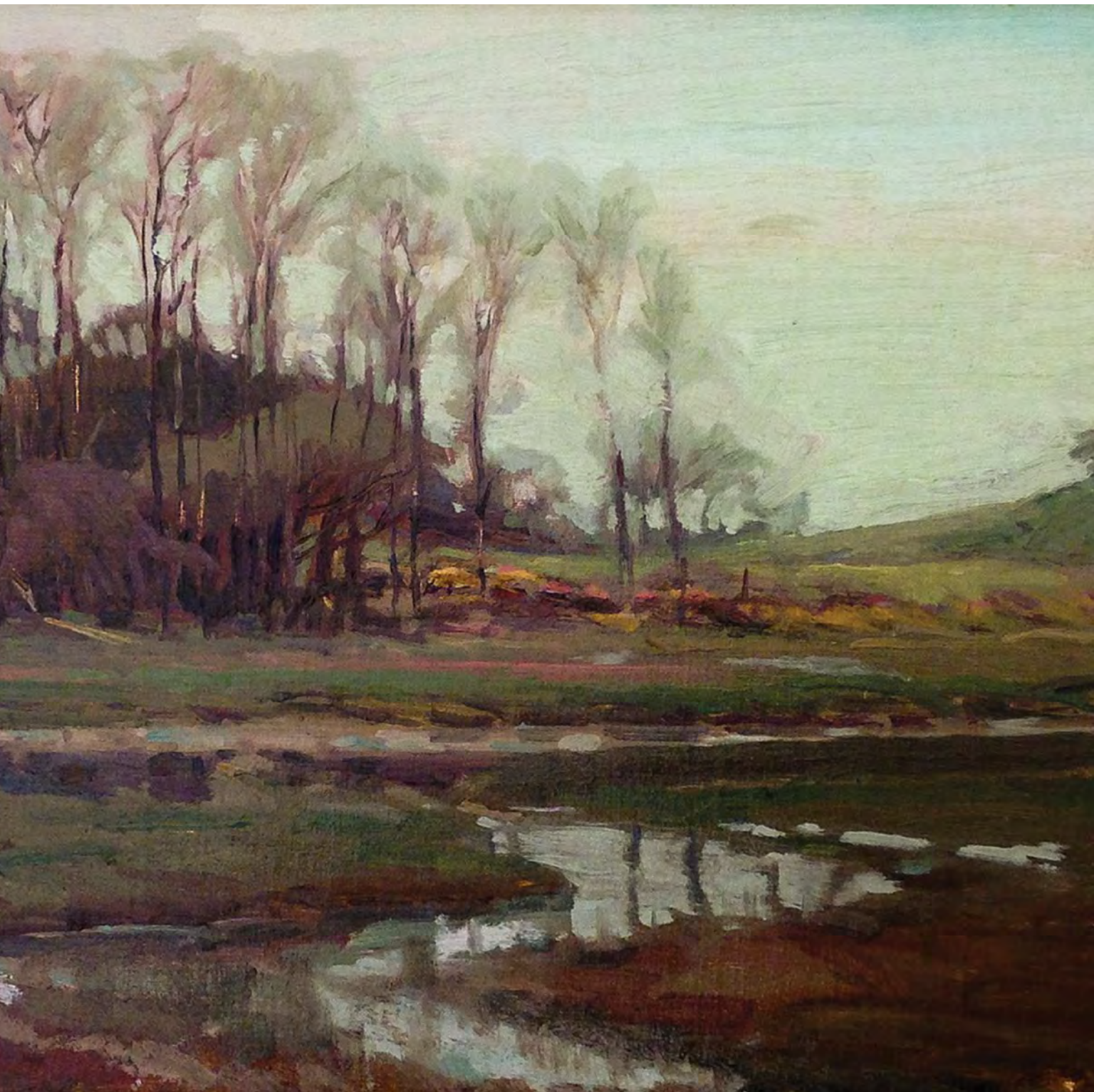
(left to right) Celebrating the harvest at the White-Ellery House; Teacher Mary Sullivan from Manchester Essex Regional Middle School installing *Candy Warhol*, an exhibition of student work; Visitors enjoying a family tour, offered each month.

Donald and Kathleen RuzECKi
 Robert and Patricia Ryan
 Charles and Jane Rzepka
 Kathleen Sacco
 John Salisbury
 Christa Sammons
 Kathleen Santo
 Tom Schaefer
 Thomas Schmidt
 Judith Schroeter
 Paul Schwartz and Carole Rein
 Mary Scofield
 Sally Seamans
 John and Marcia Seward
 Steven and Eileen Shapiro
 Stanley and Judith Shapiro
 Karen Sheldrick
 Mark Shizh
 Jeff Weiss and Marilyn Short
 Davina Louise Shuman
 Christine Sidon
 Marcia Siegel
 Manuel Simoes
 MacGregor Freeman and
 Joan Sindall
 Bruce and Kathy Slifer
 Isabel Sloane
 Richard Sloane
 Errol and Yvonne Smikle
 Nancy Smith
 Robert and Eileen Smith
 Linda Smith
 Elizabeth Rice Smith

Bruce Novak and Sally Smithwick
 Wayne Soini
 Andrew Soll
 Joseph and Helen Soussou
 JoAnn Souza
 Danuta Stachiewicz
 Jeremy Stahlin and
 Judith Fleischman
 Martha Stearns
 Will and Kerstin Stebbins
 Laurel Stevens
 Margaret Stocker
 Roger and Helen Stoddard
 Mark Stolle
 Sandra Stolle
 Ellen Stone
 Brad and Beth Story
 Dave and Dani Stotzer
 Pamela Stratton and Kathryn Tuck
 Judith Strohm
 Patrick and Dolores Sudbay
 Margaret Sullivan
 Gerry Sullivan and Lois Dagle
 Bernice Svedlow
 Martha Swanson
 Larry and Marilyn Swift
 Paul Sylva and Christine Becker
 Monica Synnott
 Wylie and Sallie Sypher
 T.O.H.P. Burnham Library
 Elizabeth Walker Talbot
 Holly and Laura Tanguay
 Anthony Tappe

Nancy Tarbox
 Wendy Tardrew Davis
 Norma Tarr
 Robin and Martha Tattersall
 Jeff and Ruth Taylor
 Susan Teel
 Mary Thielscher
 Mark Jones and Marcia Thomas
 Anne Thomas
 Samuel and Elizabeth Thorne
 Kim Tieger
 James Tolman
 John Cunningham and
 Catherine Tousignant
 David Tower and Robin Hoffman
 Robert and Joyce Tuffley
 Susan Turnbull
 Horace Turner
 Diane Usewick
 Christine Vachon
 Juni Van Dyke
 Laura Ventimiglia
 William Porter and Bette Viano
 Robert Viator
 Regina Villa
 Blair and Sarah Villa
 Theodore and Linda
 Von Roseninge
 Dorothy Von Roseninge
 Ralph Cole Waddey and
 Ana Alakija Waddey
 Maura Wadlinger
 Sage and Linda Walcott

Leslie Ward
 James Ward and
 Anne DeSouza Ward
 J.P. and Dwight Ware
 Rokhaya Waring
 Suellen Wedmore
 Norman and Ruth Weeks
 Lee and Judith Weinberg
 Richard Weiss and
 Barbara McLaughlin
 Richard and Rosemary
 Weissman
 Mary Ann Wenniger
 Anne White
 Marit White
 Terri Whitney
 Larry Whitten
 Michael and Amy Wiklund
 Dan Wilcox
 Phil Wilde
 Beth Williams
 Peter and Lynne Williams
 Kirk Williams
 Susan Willis
 Margaret Willmann
 Helen Wiseman
 James and Janet Wolahan
 Martha Wood
 Bruce and Brenda Woodbury
 Ned and Susan Woodman
 Alyssa Wostrel
 Curtis and Nancy Wren
 Martha Wright



Landscape with Stream, c.1900, oil on canvas board, by Henry Rodman Kenyon (1861-1926). Gift of Donald McPhail, 2018 (2018.50.8).



(left to right) Retired Librarian/Archivist Stephanie Buck volunteering for *Archives Illuminated*; Visitors exploring in the Folly Cove Designers Gallery.

Sib and Judy Wright
 Elliot and Janice Wyner
 Christine Zampell
 Carol Ann Zapustas
 Samuel and Ann Ziergiebel

Corporate Donors Up to \$249

C.B. Fisk, Inc.
 Cape Ann Insurance Agency, Inc.
 Deborah Coull Salon
 Gloucester Marine Genomics Institute
 Glover's Floor Covering, Inc.
 Good Harbor Graphics
 Halibut Point Restaurant
 Hecht Development
 Hughes-Bosca
 Iron Tree Service
 Janney Montgomery Scott LLC
 Katherine Richmond Photography
 Manchester Historical Society
 Marty Morgan Pottery
 Mercury Gallery
 Open Book Systems, Inc.
 Professional Career Solutions LLC
 Saugus Sportsmans Club
 The Law Office of Meredith Fine
 Tremont Auctions
 Virgilio's Bakery

Matching Gift Foundations

Caterpillar Foundation
 Coverys Community Healthcare Foundation
 Gorton's Seafood
 JP Morgan Chase Foundation

Merrill Lynch Wealth Mgmt/
 Bank of America
 Spencer Foundation
 Strada Education Network
 U.S. Bank Foundation

In Honor of

Linda Johnson
 Elana Brink
Thomas Hovey
 William Hovey
Gigi Barnhill
 Linda Smith
Kenneth Erickson
 William Wimer

In Memory of

Fred Buck
 Stephen and Marie Bahlke
 Ann Banks
 Benjamin and Ann Baylies
 Tom Mansfield and
 Rebecca Baylies
 Michael Lipton and
 Catherine Bayliss
 J.J. and Jackie Bell
 Elana Brink
 Adam Costello and Sunniva Buck
 Walter and Dawn Carpenter
 Catherine Ryan Art Image Design
 Robert Chandler and
 Ronda Faloon
 Salvatore and Catherine Ciolino
 Pat and Anna Conlon
 Valerie Costello

John and Lee Cunningham
 Charles and Louise DeWolfe
 John and Betty Erkkila
 Judith Garland
 Robert and Susan Guest
 Sarah Jacobs
 Linda and Roy Johnson
 Patricia Joseph
 Susan Kent
 Mark Lindsay and
 Martha Morgan Lindsay
 Susan Lovasco
 Open Book Systems, Inc.
 James and Nina Perry
 Raj, Janet, Rikki and Lana Razdan
 Joseph and Maggie Rosa
 Arthur Ryan
 Saugus Sportsmans Club
 Anne Siegel
 Nancy Tarbox
 Hazel Von Rosenvinge
 Curtis and Nancy Wren

Adele Ervin
 Martha Oaks and Scott Memhard

Peter Kenyon
 Elana Brink

Tom O'Keefe
 Arthur Ryan

Carol Stearns
 Eileen Sporing and
 Jocelyn Ramella

Betty Thomas
 Jeffrey and Linda Kellner

William Traves
 J.J. and Jackie Bell
 Robert Chandler and
 Ronda Faloon
 John and Lee Cunningham
 Sybille Denninger-Abed
 Glover's Floor Covering, Inc.
 Mark Glovsky and Livia Cowen
 Arthur Ryan

In Kind Donations

Gail and Bill Anderson
 Hope and Robert Bachelder
 J. Robert and Leslie Beattie
 J.J. and Jackie Bell
 Kaethe Flynn
 Stephen and Nina Goodick
 William and Anne Kneisel
 Christine and Paul Lundberg
 Jeffrey Marshall and Phoebe Potts
 Jenifer and Dan McDougall
 Elizabeth Moore
 Susanna Natti and Alan Willsky
 John Rando
 Buzz and Lorraine Schulte
 Judy and Jack Shields
 Hinda Simon
 Judi and Ed Zuker



IT IS WITH GREAT SADNESS that the Cape Ann Museum notes the passing of many good friends in 2018. We particularly acknowledge the loss of Fred Buck, Adele Ervin and William Traves, each of whom had a profound impact on the Museum's collections, exhibitions and programs, and its staff.

FRED BUCK (1948-2018)

Poet, musician, historian and postman, Fred Buck volunteered and was later employed by the Cape Ann Museum for more than a dozen years as its first and only photo archivist. Fred's knowledge of "everything" Gloucester was deep and his fervor for its photographic history, from glass plate negatives to digital scans, benefited scholars, television producers, book publishers, community members, museum visitors and especially his co-workers.

Fred was a masterful writer and a biting wit. We expect he would appreciate the irony of our appropriating his own words to honor him; words he used to honor late friend, historian Joe Garland in 2011:

He was demanding, generous, fractious, caring, passionate, jealous, protective, intensely annoying and unshakably honest. We miss him deeply and are as deeply grateful every time we find a mark of his wisdom and knowledge on a document or photo in our collections.

*Rest in peace good friend.
We'll not forget you.*
Cape Ann Museum Staff

ADELE ERVIN (1924-2018)

A great friend and supporter of the Museum, Adele Ervin was always willing to lend a hand in the most practical and generous of ways.

Born in California, Adele moved with her family in Ottawa, Canada in her early years. During the second World War at the age of 18, she joined the Canadian Red Cross, working as a mechanic and an ambulance driver transporting wounded soldiers arriving home from the European theater. Towards the end of the war, she transferred to Germany and worked in the American Army Hostess Service. In 1947, Adele returned to this country, attended secretarial school and worked for Westover School in Connecticut and the National Association of Independent Schools. She moved to Manchester in 1950.

A regular visitor to the Cape Ann Museum and a true patriot, Adele would always take time "to pay homage," as she liked to say, to Walker Hancock's *Pennsylvania Railroad War Memorial* which hangs in the Museum's Atrium. The sculpture never failed to move her to tears.

For those who knew Adele, it will come as no surprise that the support she offered to the Museum was practical and direct, always intended to help the organization do a better job with the tasks at hand. In 2007, when stabilization work was just beginning on the White-Ellery House, she made arrangements for trees which were encroaching on the property to be trimmed back so that work could proceed. A few years later, her proactive spirit and generosity resulted in the Museum's acquisition of portable gallery seating that visitors could carry with them while touring the galleries. And most recently, she set the Museum up with assisted listening devices which allow everyone to enjoy our programming. Adele was also mindful of the Museum staff, calling to congratulate someone on a job well done or to thank us for a particularly engaging lecture or exhibit she had attended. Like many others, I am in the habit of saving occasional phone messages on my answering machine and a call from Adele is the fourth one I come to when I scroll through them. The sound of her voice, her kind words and a parting "cheers!" will always remind me of what a remarkable woman Adele Ervin was.

Martha Oaks, Curator
Cape Ann Museum

(right) Walker Hancock (1901-1998), *Pennsylvania Railroad War Memorial*, 1949-1952, plaster maquette. Gift of The Estate of Walker Hancock (2001.10).



WILLIAM TRAYES (1928-2018)

It is a museum director's good fortune to have many occasions to write a note of thanks. During my thirteen years in the role, William Trayes, and by extension, his wife Roswitha, was the recipient of many of them. There was a time, particularly when our staff was very small, that Bill and his assistant Brian Colby, could be found at the Museum on a weekly basis, helping staff transport murals to the conservator, hanging shelves or painting pedestals. When not serving in a custodial role, Bill, a discerning collector and insightful art historian, served on the Museum's Collections Committee. A life-long resident of Rockport and patron of many Cape Ann artists, Bill cared deeply about sharing his knowledge of Cape Ann history, and he strove to make the Museum an "even better" place. He led walking tours of Rockport artists' homes and studios for Museum visitors; he trained docents and he schooled staff. His home served as the venue for many Collections Committee meetings, and at one time, for the entire Fitz Henry Lane Society. Roswitha, the consummate hostess, oversaw all details.

Bill's relationship with the Museum went back more than 40 years. He curated one of the Museum's first special exhibitions in 1976. Entitled *Gloucestermen*, it included prints by numerous artists including Anthony Thieme, Stephen Parrish, Winslow Homer and Childe Hassam. In 2012, Bill organized a second exhibition at the Museum. *Ships at Sea* featured paintings from his own collection complemented by works from the Museum's permanent collection.

Over the years, Bill and Roswitha made many significant gifts of art, artifacts and archival material to the Museum. Curator Martha Oaks notes that one of their most historically important gifts was a handsome mahogany sideboard, made on the North Shore around 1804 for a Gloucester family. Discovered inside one of the drawers was a slip of paper upon which a complete provenance was carefully recorded, revealing that the sideboard had been passed down from mother to daughter for nearly 200 years.

Our habit of exchanging brief notes continued through the years. I received the following shortly before Bill died. In it, he takes advantage of yet another opportunity to share a little bit of Cape Ann history.

September 1, 2017

Dear Ronda,

This is a belated thank-you from both of us for the gift of the catalogue to the Virginia Lee Burton Show in Japan.

Long, long ago, when we were first married and when square dancing was very much in vogue, Roswitha tried without much luck to bring me up to her skills so we danced in Lanesville, the Cove and most often at the Rockport Art Association. The Folly Cove Designers were at their peak and we admired their artistry and envied their output, and [appreciated] that they joined us on the dance floor.

Sincerely,

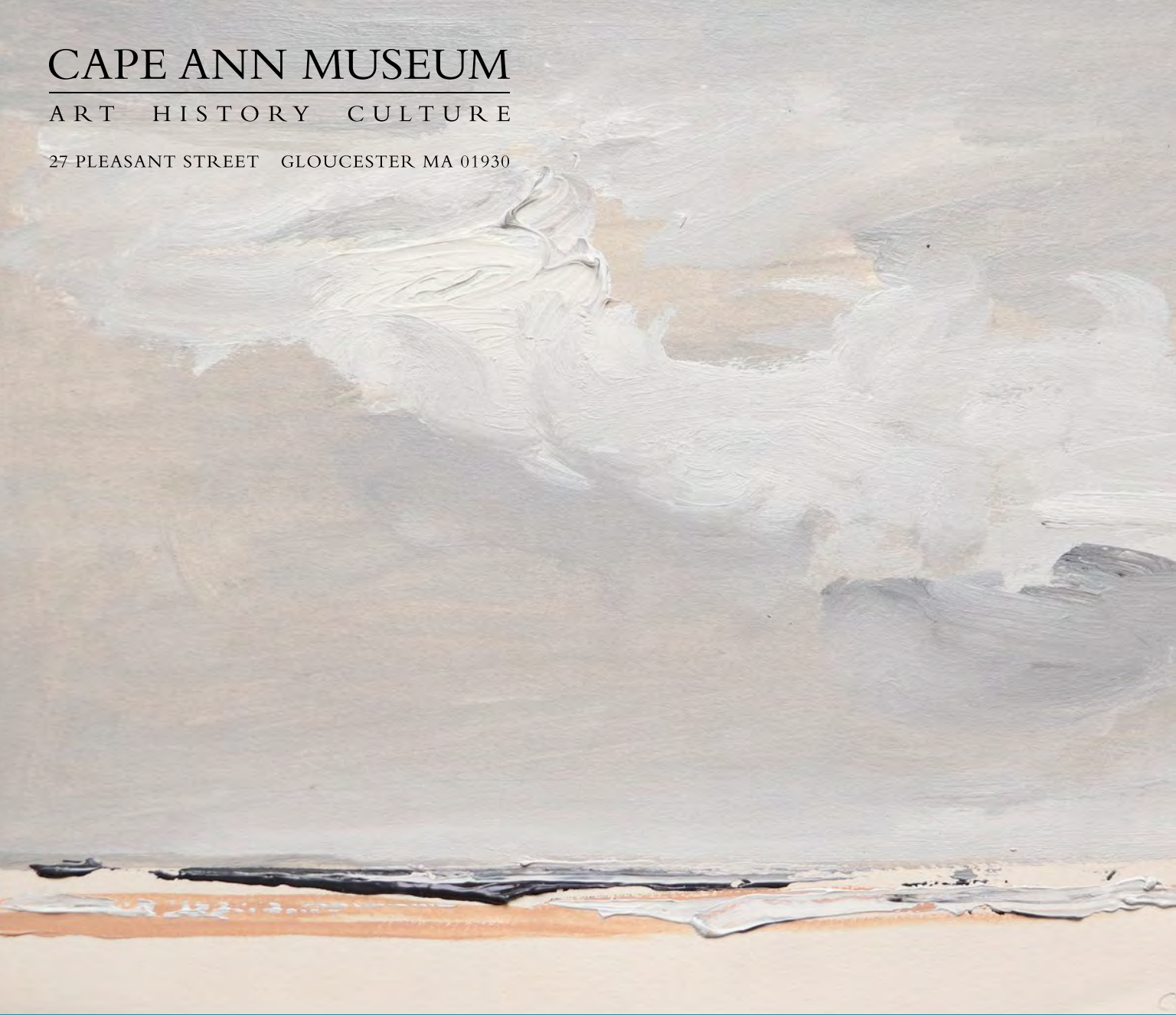
Bill

Ronda Faloon, Outgoing Director
Cape Ann Museum

CAPE ANN MUSEUM

ART HISTORY CULTURE

27 PLEASANT STREET GLOUCESTER MA 01930



MUSEUM INFORMATION

HOURS The Museum is open Tuesday through Saturday, 10:00 a.m. to 5:00 p.m. and Sunday, 1:00 p.m. to 4:00 p.m. Closed Mondays and major holidays. The Library & Archives are open Wednesday and Friday, 10:00 a.m. to 1:00 p.m.; Thursday, 1:00 p.m. to 4:00 p.m. and by appointment.

ADMISSION Adults \$12; Seniors, students, Cape Ann residents \$10; Youth (18 and under) and Museum members are free.

TOURS Guided tours offered Tuesday through Saturday at 11:00 a.m. and 2:00 p.m.; Sunday at 2:00 p.m. For group tours call (978)283-0455 x12.

ACCESS The Museum is committed to accessibility for all visitors.

MEMBERSHIP The Museum is supported by donations and annual memberships. Call (978)283-0455 x35 for membership information.

FOLLOW ALONG facebook.com/camuseum twitter.com/capeannmuseum instagram.com/capeannmuseum

DON'T MISS OUT! Sign up for CAM's weekly e-blast at capeannmuseum.org/eblast.