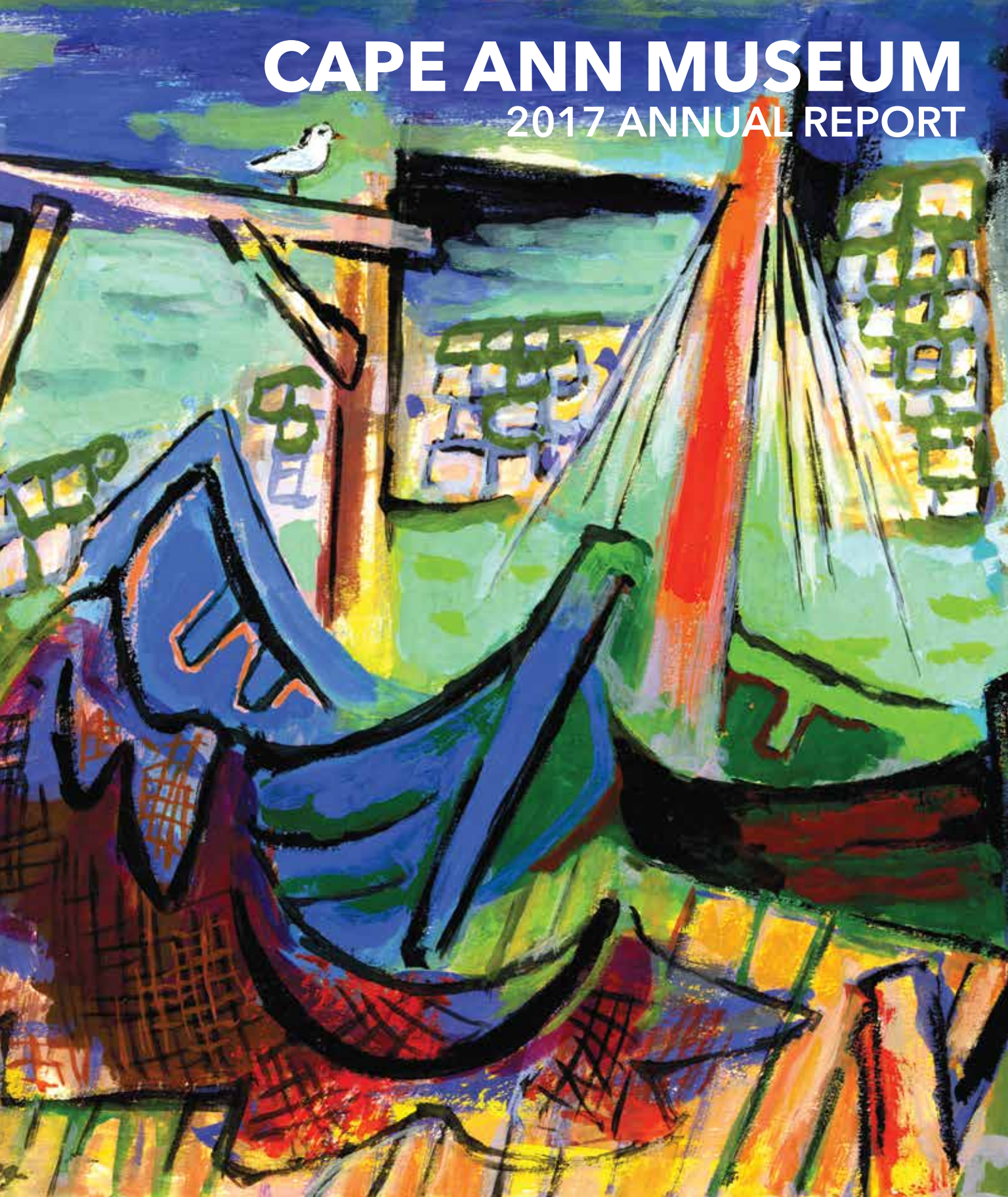


# CAPE ANN MUSEUM

## 2017 ANNUAL REPORT



## 2017 BOARD OF DIRECTORS

John Cunningham, President  
J.J. Bell, Vice President  
Arthur Ryan, Treasurer  
Nina Goodick, Clerk

Robert Bachelder  
Stephanie Terelak Benenson  
Kermit Birchfield  
Bonnie Covington  
William Cross  
Charles Esdaile  
Stephanie Gaskins  
Henrietta Gates  
Anne Rogers Haley  
William Hausman  
Sam Holdsworth  
Thomas Hovey  
William James  
William Lynch  
Susanna Natti  
David Porper  
John Rando  
Hinda Simon  
Richard Tadler  
Kristin Zarrella

## 2017 MUSEUM STAFF

### Administration

Ronda Faloon, *Executive Director*  
Sheila Hruby, *Administrator*  
Cara White, *Administrative Assistant*

### Communications

Meredith Anderson,  
*Design & Communications*

### Curatorial

Martha Oaks, *Curator*  
Leon Doucette, *Curatorial Assistant*  
Erik Ronnberg, *Adjunct Maritime Curator*

### Development

Leslee Shlopak, *Development Director*  
Amy Fanning, *Development Coordinator*

### Education and Programming

Courtney Richardson, *Director of  
Education and Public Programs*  
Kirsten Vega, *Education Coordinator*

### Facilities

Walter Chianciola, *Facilities Manager*  
Nick Tarantino, *Security*

### Research

Stephanie Buck, *Librarian/Archivist*  
Fred Buck, *Photo Archivist*  
Linda Johnson, *Librarian Assistant*

### Visitor Services

Olivia Boi, *Visitor Services*  
Dianne Sampson, *Reception*

*Security Coordinator Tom Skalski, Program  
Coordinator Kate LaChance, Museum  
Educator Liza Browning and Visitor Services  
Coordinator Victoria Petway left for new op-  
portunities during 2017. We thank them for  
their many contributions to the Museum.*



**OUR MISSION** To foster an appreciation of the quality and diversity of life on Cape Ann, past and present; to further the knowledge and enjoyment of Cape Ann history and art; to collect and preserve significant information and artifacts; and, to encourage community involvement in our programs and holdings. In all our activities, the Museum emphasizes the highest standards of quality and seeks to engage the broadest possible audience.

Dear Friends,

Last year, more than 26,000 visitors—a record—passed through our doors. They enjoyed the many facets of our permanent collection and gravitated to our special exhibitions, in particular, the immensely popular *Rock Bound: Painting the American Scene on Cape Ann and Along the Shore*, and the more academically focused *Drawn from Nature and on Stone: The Lithographs of Fitz Henry Lane*. We hosted more than 200 engaging and inspiring public programs attended by almost 10,000 adults, families and children. Membership, donations, admissions and shop sales all surpassed previous years. We're proud of our many accomplishments in 2017 and are profoundly grateful to you, our members and friends, for the generous support that enabled this success.

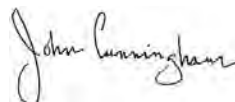
This was our public face. Behind the scenes we have been engaged in updating our Strategic Plan, articulating a vision for the Museum that challenges us to remain vigorous and relevant.

CAM's vision asserts that the Museum will continue to be one of the best small museums in the country, sharing its extraordinarily high quality and nationally relevant collection with an increasingly broad group of audiences across the Cape Ann region. The upcoming 150th anniversary of the founding of the Museum and the 400th anniversary of the City of Gloucester in 2023 serve as a unique platform to pursue this vision. These exciting milestones will celebrate the historic collection, generate civic pride around the Museum, reach and engage with new audiences, and propel the Museum forward into its next phase of growth with optimism and ambition.

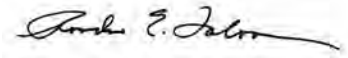
The Museum's permanent collection is central to the Strategic Plan. The primary focus of Board and staff activity for the past year has been on its present and future care, storage and display. Encouraged by the prospect of a future gift of a significant Cape Ann art collection, prompted by a peer review as part of the American Alliance of Museum accreditation process, and informed by a series of building studies and an analysis of the Collection, the Museum's Board and staff have made a commitment to upgrade our collections storage and work spaces and to increase curatorial capacity. The Strategic Plan 2018-2023, now in its final draft, reflects this commitment. We will keep you posted on our progress.

At the completion of each year, we are reminded of our good fortune. We have an active and engaged board, a talented and committed staff, a cadre of dedicated volunteers and loyal members who keep us moving forward. Our communities see us as a valuable resource, an inclusive and welcoming gathering place for all, a keeper of traditions, and a herald of the new. We are deeply grateful. Thank you.

Sincerely,



John Cunningham  
President of the Board



Ronda Faloon  
Executive Director

## 2017 COMMITTEES

All Committee and Board Members serve in a volunteer capacity. Their participation greatly enhances the Museum's ability to meet its mission.

### Building Committee

J.J. Bell, *Chair* Stephen Bell, Robert Chandler, Pearce Coues, John Cunningham, Stephanie Gaskins, Nina Goodick, Sam Holdsworth, Charlie Mann, David Porper, John Rando

### Collections Committee

Kermit Birchfield, *Chair* John Cunningham, Mary Craven, Charles Esdaile, Stephen Lindo, Daniel McDougall, Margaret Pearson, Ingrid Swanson, John Rando, Arthur Ryan, Ed Touchette

*Advisory Subcommittee:* Robert Bachelder, Elizabeth Clement, Sam Holdsworth, William Traves

*Library Sub-committee:* David Rich, Arthur Ryan, Ingrid Swanson, Ed Touchette

### Development Committee

William Hausman, *Chair* Hope Bachelder, Jackie Bell, John Cunningham, Charles Esdaile, Thomas Hovey, Jenifer McDougall, Stevie Neal, Hinda Simon

### Education Committee

Stephanie Gaskins, *Chair* Kim Anderson, John Cunningham, Thomas Hovey, John Huss, Ed Touchette

### Executive Committee

John Cunningham, *Chair* J.J. Bell, Nina Goodick, William Hausman, Thomas Hovey, Arthur Ryan

### Finance Committee

Arthur Ryan, *Chair* John Cunningham, Thomas Hovey, Richard Tadler

*Audit Sub-committee:* Thomas Hovey, Richard Tadler

### Nominating Committee

J.J. Bell, *Chair* John Cunningham, Henrietta Gates, William James

### Governance Committee

Stevie Neal and Hinda Simon, *Co-Chairs* William Cross, John Cunningham, Sam Holdsworth, Stephanie Gaskins

### Supporting Committees: Development

*Fitz Henry Lane Society Committee:* Hope Bachelder, Jackie Bell, Bonnie Covington, Susan Goodchild, Christine Lundberg, Jenifer McDougall, Shelagh Schylling, Lorraine Schulte, Judy Shields

*Red Cottage Society Committee:* Stephanie Terelak Benenson, Eliza Cowan, Torry Cullen, Caroline Esdaile, Melanie Healey, Allison Mueller

### Supporting Committees: Collections Affinity Groups

*White Ellery House Committee:* William Cross, William Finch, Prudence Fish, David Rhineland, Carol Rose, Maggie Rosa

*Folly Cove Designers Committee:* Sarah Carey, Deb Carlson, Bettie Cartwright, Beth Coolidge, Bonnie Covington, Pippy Giuliano, Mary Granfield, Kathy Groves, Gerry Herbert, Christine Kahane, Christine Lundberg, Grace Murray, Lee Natti, Susanna Natti, Mary Rhineland, Brenda Richardson, Candace Wheeler, Patsy Whitlock

*Maritime/Fisheries Committee:* Tom Balf, J.J. Bell, Fred Brink, William Cross, John Cunningham, Nina Goodick, Tom Halsted, Sam Holdsworth, Thomas Hovey, William James, Sarah Mowitt, David Porper, David Rich, Paul St. Germain

### Supporting Committees: Special Projects

*Strategic Planning Committee:* J.J. Bell, Stephen Bell, Stephanie Terelak Benenson, John Cunningham, William Cross, William Hausman, Sam Holdsworth, Janet James, William Lynch, Arthur Ryan, Ernst von Metzsch, Peter Wernau, Kristin Zarrella

*Accreditation Committee:* Jill Bell, Kristin Zarrella

## 2017 ACQUISITIONS

The Cape Ann Museum thanks the individuals and/or their estates whose generous donations have enriched the Museum's collections over the course of the year.

### FINE AND DECORATIVE ARTS

**Anonymous donor** Folly Cove Designers tablecloth printed with *Georgia Wildflowers* design, mid 20th century, red ink on white linen by Louise T. Kenyon (1906-1998).

**Gift of the photographer** Collection of four photographs taken aboard the fishing vessel *Joseph & Lucia II*, 1980s, by Nubar Alexanian.

**Gift of the American Textile History Museum** *Middlesex Mills, Lowell, MA*, c.1841, oil on canvas by an unattributed artist.

**Gift of The ArtAmory Trust** *In the Rips, off Montauk; The Ground Swell; Rockport Sloops; Oyster Bay Sloop*, 1928-1929, four etchings by Reynolds Beal (1866-1951).

**Gift of Caroline Barron** Folly Cove Designers tablecloth printed with *Lily of the Valley* design, c.1956, green ink on white linen by Lee Kingman Natti.

**Gift of Kay Benaroch** *Two Fishermen on a Wharf*, c.1938-1939, oil on canvas by Ralph Warren Lermond (1910-2002).

**Gift of the photographer** *Katharine Lane Weems in her Manchester Studio*, 1978, color archival pigment print by Nathan Benn.

**Gift of Sam Berman** Collection of 21 collagraphs, screen prints and collages, 1968-2000s, by Vivian Berman (1926-2016).

**Gift of Robert J. Coakley** *Portrait of Eleanor Cavander Malmi, 17 Years Old*, 1931, oil on canvas by Virginia Lee Burton Demetrios (1909-1968).

**Gift of Linzee Coolidge** Collection of four paintings: *Untitled Harbor View*, undated, gouache on paper by Harold Rotenberg (1905-2011); *Untitled Harbor View*, undated, watercolor on paper by Vera Andrus (1896-1979); *Urn at Coolidge Point*, undated, watercolor on paper by Edward Hyde Cox (1914-1998); *Six Men in Green*, undated, watercolor on paper by Zygmund Jankowski (1925-2009).

**Gift of Mary Craven** *Rockport Harbor*, c. early 1950s, oil on canvas by Gifford Beal (1879-1956).

**Gift of Emma Brackett Davis** Skirt printed with *Sunflower* design, undated, yellow ink on black linen, made by Folly Cove Designer Ida Corliss (1906-1995).

**Gift of Karen Carbone Dow** Two drawings: *Sketch of Karen Carbone Dow*, 2000, pencil on paper by Bernard Chaet (1924-2012); *Sketch of Karen Carbone Dow*, 2000, ink on paper by Ninon Lacey.

**Gift of Kathy Erkkila** Granite bracelet, undated, polished Cape Ann granite and silver, made by Barbara Erkkila (1918-2013).

**Gift of Adele Q. Ervin** Two paintings: *Portrait of Margaret Thayer Lancaster*, 1900, oil on canvas by Marie Danforth Page (1869-1940); *House on Middle Street*, 1998, watercolor on paper by Jeff Weaver.

**Gift of Tom and Jennifer Fels** Folly Cove Designer notebook, 1974, kept by Margaret (Peggy) Norton (1905-2000); *Quarrying*, 2015, graphite on paper, drawing by Tom Fels.

Helen Stein (1896-1964), *Two Artists at Work*, [detail], early/mid 20th century. Gouache and oil on paper. Gift of Arthur Ryan.





Historic photograph of a Tea House on Nautilus Road in East Gloucester with the painted wooden sign that hung on the Tea House (visible in photo), c.1917. Gift of Judy Walcott.

**Gift of Nino Micozzi** Two pieces of scrollwork designed for The Ship restaurant, c.1975, carved and painted wood, by James T. McClellan (1910-2005).

**Gift of Ed Myskowski** Two drawings: *Untitled*, 1998, mixed media on board; *Memories*, 1997, chalk, charcoal and pencil on paper, both by Juni Van Dyke.

**Gift of Linn Parisi** Folly Cove Designers skirt printed with *Garland of the States* design, 1958, black ink on green linen by Louise T. Kenyon (1906-1998).

**Bequest of Nancy E. Poland** *A Southwest View of the Light House on Wigwam Point in Squam Harbor*, c.1801, watercolor on paper, by an unattributed artist.

**Gift of Riverrun LLC** A collection of 20 drawings by George Demetrios (1896-1974), Lawrence Fane (1933-2008), and Joseph Solman (1909-2008), c. mid 20th century; *Untitled Figurine*, c.1940s, glazed porcelain by George Demetrios; Folly Cove Designers placemat printed with *Queen Anne's Lace* design, 1967, teal ink on white linen by Mary Maletskos (1918-1993); Folly Cove Designers placemat printed with *Smith College* design, 1955, blue-grey ink on white linen by Louise T. Kenyon (1906-1998).

**Gift of Arthur Ryan** A collection of eleven paintings and one print: *Untitled*; *Figure 19: Distorted Figure of a Nude*; *Two Artists at Work*; *Man on Bike*; *Figure 6: Lounging Nude*, early/mid 20th century, gouache and oil on paper by Helen Stein (1896-1964); *Quintet*; *The Cello Player*, 20th century, oil on canvas by William Meyerowitz (1896-1981); *Do I Dare to Step Inside*, c.1970s, gouache on paper by John Manship (1927-2000); *Portrait of Harry Lane*, mid 20th century, oil on artist board by Earle T. Merchant (1903-1997); *Eastern Point Lighthouse, Gloucester*, 1979, water-

color on paper by Steve Zazenski; *Last Stop Variety, Ledge Road & East Main*, late 20th/early 21st century, oil on board by Carleen Muniz; *Tarr & Wonson Copper Paint Manufactory*, c.1996, reduction woodcut print by Don Gorvett.

**Gift of Linda Schreyer** Three paintings: *Gloucester*, 1960, gouache and ink on paper; *Boats at Dock*, gouache on paper; *Back Beach, Rockport*, watercolor on paper, c.1960, by Tibor Gergely (1900-1978).

**Gift of Richard J. Stephenson and family** *Gloucester Harbor*, 1994, oil on canvas by Robert Stephenson (1935-2015).

**Gift of the artist** *Spring Marsh*, 2004, oil on canvas by Patti Sullivan.

**Gift of Fred Thompson and his siblings Stuart, Christine, Steven, Adrienne and Valerie, in memory of their grandfather Fred J. Thompson, Captain of the Governor Foss** *Portrait of the Gloucester Fishing Schooner Gov. Foss*, c. early 20th century, watercolor and gouache on paper by A. A. Acors.



Vivian Berman (1926-2016), *Silent Light*, 1969. Collagraph print. Gift of Sam Berman.

**Gift of Patricia Whitlock** *Messengers of Hope*, linocut on paper, by Folly Cove Designer Eleanor Curtis (1910–2008).

**Gift of Erving and Joyce Wolf** *Wingaersheek Creek Beach, Gloucester, 1887*, oil on canvas by William Lamb Picknell (1853–1897).

#### ARTIFACTS

**Gift of Walter Chianciola** St. Peter's Fiesta Pin, 2017.

**Gift of Tracie Lee** Net mending needles and union membership pins owned by her mother, Amalia DaRosa Muniz (1891–1990), who worked for the Linen Thread Company.

**Gift of Terry McTeague** Humane Society of Massachusetts Silver Medal, 1893, designed by Allan Wyon (1843–1907), presented to John J. Carroll for rescuing crew of Schooner *Annie Maria*.

**Gift of Catherine Swauger, in honor of Dora E. Roberts and Catherine M. Roberts-Swager** A collection of medals, documents and photographs relating to her grandfather Griffith Roberts (1869–1942) who served on the U.S.S. *Gloucester* during the Spanish American War.

**Gift of Judy Walcott** Two historic photographs of a Tea House on Nautilus Road in East Gloucester, along with a painted wooden sign that hung on the Tea House, c.1917.

#### MUSEUM PURCHASES

*The Galleon Mayflower II in Dry Dock*, 1996, reduction woodcut print on Japanese Okawara paper by Don Gorvett, purchased with funds generously provided by Arthur Ryan.

Carved double-sided woodblock, 1996, one side featuring *The Galleon Mayflower II in Dry Dock* design, second side featuring *Tarr & Wonson Copper Paint Manufactory* design, by Don Gorvett, purchased with funds generously provided by Arthur Ryan.

*Rigging (Gloucester Harbor)*, c. early 1950s, gouache on paper by Morris A. Blackburn (1902–1979), purchased with funds generously provided by Arthur Ryan.

*Homage to Matisse*, 2016, collage, oil and graphite on paper and *Homage No. 2*, 2016, collage, oil and acrylic on paper, both by Ruth Mordecai, purchased with funds generously provided by the Kanter Kallman Foundation.



#### 2017 COLLECTIONS CONSERVATION PROJECTS

Central to the mission of the Cape Ann Museum is the care and preservation of its collections according to the highest professional standards. Conservation can be costly and the Museum is indebted to the individuals and foundations that have provided financial support for such undertakings.

##### White-Ellery House stabilization

As part of ongoing preservation of the 1710 White-Ellery House, stabilization work was done on the roof and windows of the ell, an addition added on the north side of the main part of structure around 1730. This project was made possible with the support of the Society for Colonial Wars in the Commonwealth of Massachusetts and the National Chapter of the Society for Colonial Wars.

##### Additional works stabilized:

- Untitled oil on canvas by Ralph Warren Lermond (1910–2002), done in 1938/1939. This project was made possible with the support of Kay Benaroch, the artist's daughter.
- Scrollwork from The Ship restaurant, Route 1, Lynnfield, carved by James T. McClellan (1910–2005). This project was made possible with the support of Jane K. Lewis.
- *A Southwest View of the Light House at Wigwam Point in Squam Harbor*, c. 1801, watercolor on paper by an unknown artist.
- *View of Norwich from the West Side of the River, 1849*, colored lithograph on paper by Fitz Henry Lane (1804–1865). Funding for the conservation of this work was provided by Wendy Shadwell Bequest's to the American Historical Print Collectors Society.



Catalog for the Virginia Lee Burton exhibition at Gallery A4 in Tokyo.

#### LOANS

The Cape Ann Museum is committed to making its collection accessible to the widest possible audience. To that end, the Museum is pleased to occasionally lend artwork and artifacts to other organizations. The Collections Committee approved the following loans during 2017:

- Archival material and original artwork by Virginia Lee Burton was lent to the Takenaka Corporation Gallery A4, Tokyo, Japan, for a special exhibit celebrating the 75th anniversary of the original publication of Burton's *The Little House*.
- Archival materials by Virginia Lee Burton were lent to the Wenham Museum, Wenham, MA, for a special exhibition centered on Burton's 1939 children's book *Mike Mulligan and His Steam Shovel*.

## GIFTS TO THE LIBRARY &amp; ARCHIVES

**Gift of Peter Anastas** *H. Rotenberg: An Artist's Journey*, Judith A. Curtis, 2010. *Margarett Sargent: A Modern Temperament*, Davis Museum exhibition catalog, 1996. *A Ten-year Retrospective Alumni Exhibition*, Montserrat School of Visual Art, 1980, *A Walker in the City: Elegy for Gloucester*, Peter Anastas, 2013.

**Gift of anonymous donor** *Edward Hopper's Maine*, Bowdoin College Museum of Art, Kevin Satatino, 2011.

**Gift of anonymous donor** *American Women Artists 1860-1960*, Avery Galleries catalog, 2017.

**Gift of anonymous donor** *Art News Magazine*, Japan (article on Little House exhibit).

**Gift of Babson Historical Association** *Babson Genealogy 1606-2017*, 2 vol. set, Alicia Crane Williams, 2017.

**Gift of Susan Bateman** *GHS Flicker*, 1935, 1936, 1937.

**Gift of Ray Bates** *Shipwrecks North of Boston Vol. 2: Cape Ann*, Capt. Ray H. Bates Jr., 2017.

**Gift of Catherine Bayliss** *1917 Sanborn Atlas* with updates to 1963.

**Gift of Nathan Benn** *Kodachrome Memory: American Pictures 1972-1990*, Nathan Benn, 2013.

**Gift of Robin Brailsford** 8 books by Frances Wosmek: *A Winner for Great Misery*, hand drawn and colored draft; *In the Space of a Wink*, 1969; *Acknowledge the Wonder*, 1988 (2 copies); *Never Mind Murder*, 1977; *A Brown Bird Singing*, 1986; *Come and Play*, 1949; *Twinkle Tot Tales*, 1949; *Cuddles and his Friends*, 1949.

**Gift of Fred Buck** *Historical Atlas of Massachusetts*, ed. R. W. Wilkie and J. Tager, 1991.

**Gift of Sam Ciolino** *Shipwrecks of Massachusetts Bay*, Thomas Hall, 2012.

**Gift of Robert J. Coakley** *LIFE Magazine* featuring an article on the Folly Cove Designers, November 26, 1945.

**Gift of John Duff** *Salt Spray: A Cape Ann Senior Writers Anthology*, Gloucester Council on Aging, 1991. Signed by the authors.



Jane Peterson (1876-1965), *Gloucester Harbor (Smith's Cove)*, c. 1920. Oil on canvas. The James Collection, promised gift to the Cape Ann Museum.



- Gift of Tamsen and Dominic Endicott** *The Art of Finding Nemo*, Mark Cotta Vaz, 2003, signed by Pixar writer Andrew Stanton.
- Gift of John and Betty Erkkila** *Souvenirs of Lanesville*, John and Betty Erkkila, 2016.
- Gift of Ronda Faloon** *Stuart Davis: In Full Swing*, Whitney Museum of American Art exhibition catalog, 2016.
- Gift of Gallery A4** Catalog from *Little House* exhibition at Gallery A4, Tokyo, Japan, 2017 (3 copies).
- Gift of Charles Giuliano** *Gloucester Poems: Nugents of Rockport*, Charles Giuliano, 2017.
- Gift of Pauline Porter Hall** Two Gloucester postcards.
- Gift of Michael T. Haynes** Souvenir from Gloucester, Mass., card encasing a photo of Patrick Henry Butler II and III and Ann J. Butler at the Man at the Wheel.
- Gift of Mary Ellen Lepionka** *The Algonquian Shellfish Industry on Cape Ann*, bulletin of the Massachusetts Archaeological Society, Vol. 78, 2017.
- Gift of Mary McCarl** *Antebellum Natchez*, D. Clayton James, 1968; *The Illustrated Longitude*, D. Sobel and W. J. Andrews, 1995; *One Serb Family*, John Lastavica, 2015; *The Servants' Directory or Housekeepers Companion*, H. Gloss, 1762 reprint; *What Clothes Reveal: The Language of Clothing in Colonial and Federal America*, Linda Baumgarten, 2003.
- Gift of Bing McGilvray** *Laura Woodward: The Artist Behind the Innovator who Developed Palm Beach*, Deborah C. Pollack, 2009; *A History of Pictures*, David Hockney and Martin Gayford, 2014; *Hans Hoffman*, William C. Seitz, 1963.
- Gift of Mary Helen McLeod** Five stereo cards.
- Gift of Marion Mullet** *Richard Andrew: Called to Paint*, Marion Mullet, 2010.
- Gift of New Hampshire Historical Society** S. H. Emanuel & Co., 1868 advertising card.
- Gift of Andrew Pope** *Edward Hopper: An Intimate Biography*, Gail Levin, 2007.
- Gift of Robert Philpot** Photograph, biography and newspaper articles about classical radio host, Simon Geller.
- Gift of Martin Ray** *Cape Ann Narratives of Art in Life*, Martin Ray, 2017.
- Gift of Karen Rembert** *Seawall Project, Gloucester, 2017 in Review*, Karen Rembert, 2017.
- Gift of Erik Ronnberg Jr.** *Records and Files of the Quarterly Courts of Essex County, Massachusetts, 1912*, Vols. 1-8, 1636-1683.
- Gift of Arthur Ryan** Vose Galleries catalogs: *Crosscurrents: The Colonies, Clubs and Schools that Established Impressionism in America*, 2016; *J. Jeffrey Grant: The Lure of Gloucester*, 2008; *James Jeffrey Grant and his North Shore Contemporaries*, 2005.
- Gift of Bonnie Hurd Smith** *U.S. Coast Guard Air Station, Salem, Massachusetts, 1935-1970*, Bonnie Hurd Smith, 2015.
- Gift of Janis Stemmermann** *In the Steps of Folly Cove*, exhibition catalog, Russell Janis Gallery, New York, NY, 2017.
- Gift of Stanley Stone** *Six Stanwood Street: Historical Background*, Cape Ann Amateur Radio Association, 2016.



Four books from the *American Twins* series by Lucy Fitch Perkins featuring Folly Cove Design covers and slipcovers, 1930s-1940s. Museum purchase made through the generosity of Arthur Ryan.

- Gift of Polly Taylor** Fifteen photographs of Gloucester Harbor by Herman Parker, c.1930.
- Gift of Fred Thompson** Four mounted cabinet cards.
- Gift of Bill and Linda Vitale** Frank Roy Fraprie photographs and ephemera: 13 framed photographic prints; 24 unframed photographic prints, some with exhibition stickers adhered to the backs; scrapbook of articles by Mr. Fraprie for *American Photography Magazine* 1942-1949; framed portrait photo of Mr. Fraprie; three boxed awards for photographs.
- Gift of Mary and Roger Wonson** *Downriver: A Memoir of Choate Island*, Mary and Roger Choate Wonson, 1983.

#### LIBRARY & ARCHIVES PURCHASES

*Jim Crow North*, Richard Archer, 2017.

Through the generosity of Arthur Ryan: Ten "Twins" books by Lucy Fitch Perkins reissued with Folly Cove Design covers and slipcovers in the 1930s and 1940s.

*Bird's Eye Views: Historic Lithographs of North American Cities*, John W. Reys, 1998.

## EXHIBITIONS

*Exhibitions are designed to showcase the Museum's permanent collection and to bring artwork and artifacts from other institutions to Cape Ann. The following exhibitions were organized during 2017, each intended to inform and engage visitors:*

### **Kodachrome Memory: Nathan Benn's North Shore, 1978**

December 27, 2016 through February 19, 2017

The photographs featured in this exhibit were taken on Cape Ann and along the North Shore by Nathan Benn in 1978 while on assignment for the *National Geographic* magazine.

### **Voicing the Woods: Jeremy Adams, Instrument Maker**

October 22, 2016 through March 5, 2017

Organs and harpsichords made by Jeremy Adams were combined with photographs by Paul Carey Goldberg to give visitors a rare glimpse inside the world of fine instrument making. Support for this exhibit was provided by Jerry and Margareta Hausman, Hinda Simon, Bettie Cartwright, Carroll and John Cabot, Gregory and Stevie Neal, Robert M. Russell and the Jane Deering Gallery.

### **Charles Movalli: Cape Ann & Beyond**

March 4, 2017 through May 21, 2017

This exhibit and the programming that accompanied it explored the long career of painter and teacher Charles Movalli (1945-2016). Support for this exhibit was provided by Judi Rotenberg and Edward Zuker and Mr. and Mrs. Robert A. and Lucienne M. Bosselman.

### **Rock Bound: Painting the American Scene on Cape Ann and Along the Shore**

June 3, 2017 through October 29, 2017

Drawn from private collections, this exhibit explored how the beauty of Cape Ann and the industriousness of its residents were captured at the turn of the century by artists such as William Glackens, Stuart Davis, Theresa Bernstein, Milton Avery and Martha Walter. Support for this exhibit was provided by John Rando, Arthur Ryan, Mary Craven, Margie Pearson, Cricket Press and Landry & Arcari Rugs and Carpeting.

### **Harbor Views**

November 4, 2017 through spring 2018

This exhibit focused on the city's skyline as depicted in six paintings dating to the first quarter of the 20th century, a time of great activity in and around Gloucester's working waterfront. The works shown were on loan from the James Collection and are promised gifts to the Museum.

### **Drawn from Nature & on Stone: The Lithographs of Fitz Henry Lane**

October 7, 2017 through March 4, 2018

This exhibit, curated by Georgia Barnhill, explored Fitz Henry Lane (1804-1865) works as a printmaker and featured lithographs from private and public collections throughout the region including the Boston Athenaeum, the Library of Congress and the Museum of Fine Arts, Boston. Support for this exhibit was provided by John Rando, Jerry and Margareta Hausman, Linzee and Beth Coolidge, J.J. and Jackie Bell, Bill and Anne Kneisel, Jay Last, Arthur Ryan, the International Fine Print Dealers Association and the American Historical Print Collectors Society, Inc.

### **Jason Grow: WWII Veterans**

October 27, 2017 through November 26, 2017

This display was a special encore appearance of Jason Grow's 2016 photo exhibit focusing on Cape Ann's World War II veterans.

### **Championing Women: Selections from the Permanent Collection**

September 1, 2017 through early summer 2018

The Museum's permanent collection has grown steadily in recent years; this exhibit spotlighted works by women artists that have recently come into our holdings.



(this page) Visitors explore the *Rock Bound* exhibition on Free Fun Friday in July.

(facing page) Performance of *Sphere* at the White-Ellery House in August.



**ROCK BOUND**  
 Painting the American Scene  
 on Cape Ann and Along the Coast

**WHITE-ELLERY HOUSE EXHIBITIONS**

2017 marked the ninth year that the Museum’s White-Ellery House (1710) has served as backdrop for a series of contemporary art installations and historical presentations. These programs attract new audiences to the historic property and encourage spirited exchange and reflection between visitors and artists.

**JUNE 3 Susan Kapuscinski Gaylord**  
***Reading the Past: A Calligraphic Installation***  
 Using excerpts from the 1848 journal of a 13-year-old Gloucester girl, Gaylord’s installation brought the rhythms of everyday life alive through her subject’s observations of school and home.

**JULY 1 Cameron Ahearn, Kerry Sullivan and Jamie Hosker**  
***Surf’s Up!***  
 This installation gave visitors a rare chance to see a collection of surfboards ranging from the mid 20th century through the present day. The collection was compiled by Ahearn’s father, and once adorned the walls of The Studio Restaurant on Gloucester’s Rocky Neck.

**AUG 5 Sarah Slifer Swift: *Sphere***  
 In this durational performance, Swift and company explored women’s social and political power through the lens of the historic White-Ellery House. Using movement, film and sound, the performers examined the complexities of labor, value and respect, as they have been gained, lost or changed over time.

*Support for this program was provided by The Umberto Romano and Clorinda Romano Foundation, which celebrates Umberto Romano’s (1906-1982) legacy on Cape Ann through arts education and appreciation and by fostering the work of emerging and/or working artists.*



## PROGRAMS AND EDUCATION

The Museum's annual program calendar is designed to complement its collection and special exhibitions with a goal of providing quality Cape Ann centered programming that is engaging, thought provoking and relevant to the lives of today's diverse audiences. During 2017, members and friends of every age were treated to a robust schedule of gallery talks, exhibition openings, lectures, poetry readings, artist workshops, photo contests, film screenings, dance and musical performances.



Erin Landry 2017

### THE NUMBERS

- In 2017, more than 10,000 people were engaged with 700 special tours and programs.
- Of these, 5,000 participated in the 100 adult educational and outreach programs offered by the Museum.
- An additional 2,800 visitors were introduced to the Museum and its collections through 482 docent-led tours.
- Over 3,000 children and families participated in 118 programs designed specifically for them.
- Students from more than 30 local schools displayed outstanding artwork throughout the year in the Museum.

### HIGHLIGHTS

Special exhibitions provided unique opportunities for programming. We heard from students, family and friends of the artist in conjunction with *Charles Movalli: Cape Ann & Beyond*. *Rock Bound: Painting the American Scene on Cape Ann and Along the Shore* inspired us all to think about collecting with Antiques Roadshow's Jim Callahan, Historic New England's Kristen Weiss, Blackwood March Auction's Michael March, and our own Curator Martha Oaks. We capitalized on the Sargent House loan of two John Singer Sargent portraits to host a lecture by MFA curator Erica Hirshler. *Laid Down on Paper: Printmaking in America 1800-1865*, the Museum's first symposium, was successfully executed

in conjunction with the special exhibition *Drawn from Nature & on Stone: The Lithographs of Fitz Henry Lane*.

Several collaborative community events took place in 2017. Highlights include: *Sylvester Ahola Jamboree*; *Hats Off to Spring: A Celebration of Grace Murray*; Gloucester Public School Arts Festival; St. Peter's Fiesta 90th Anniversary Film Series; Highland Street Foundation's *Free Fun Fridays*; Sea Serpent cruises on the Schooner *Ardelle*; the annual artist talk with Rocky Neck Art Colony; *A Weekend with Thoreau* in collaboration with the Sawyer Free Library, Gloucester Writers Center and Friends of Dogtown; the Schooner Festival; *Wearable Arts: Exploring Expression on the Human Form* with seARTS; Essex Heritage Area's *Trails & Sails* Sea Serpent Creation with Maritime Gloucester; Cape Ann Copley Society Artist in Residence Talk; Cape Ann Cinema and Stage *DoctoberFest* Film Festival; the Annual Charles Olson Lecture featuring Ann Charters in collaboration with the Gloucester Writers Center; Gallery talk with photographer Jason Grow on Veterans Day; and the Annual Middle Street Walk.

We also continued our ongoing work with area nursing homes and senior day centers through the *CAM Connections* program. Funding for this program was provided by the Bruce J. Anderson Foundation.

### YOUTH AND FAMILY PROGRAMS

In 2017, the Museum welcomed students from local, national and international schools, preschool-aged through college. Highlights of programs designed specifically for children, families and schools included the following:

- A monthly *Family Fun Free Days*, generously sponsored by David and Lisa Rich, held on the second Saturday of each month brought 694 children and families into the Museum.
- *Young at Art for Head Start* with Pathways for Children, sponsored by the Brace Cove Foundation, engaged 400 students with the Museum's collections. Teachers and parent chaperones also benefited from the classes.
- In partnership with the Gloucester and Rockport Public Schools we offered two *Countdown to Kindergarten* programs for 400 future kindergartners and their families supported with funds from the Tower Foundation.
- We hosted a professional development workshop for teachers, offered in collaboration with Essex Heritage Area. In late fall, our Educators' Open House introduced more than 52 Cape Ann teachers and faculty to the Museum's resources.

(this page) A student from Beeman Elementary School at the Cape Ann Veterans Day event; (facing page, top to bottom) CAM's annual Volunteer Appreciation party; students working with author Peter Anastas in the CAM Library & Archives; Michelle DeVecchio and Camilla MacFadyen at the seARTS' Wearable Art event.

**FRIENDS AND VOLUNTEERS**

*We are deeply grateful to our friends and volunteers who play a vital role in advancing the Museum's mission. They share their time, expertise and enthusiasm and serve as the Museum's ambassadors to the larger community.*

**Docents/Associates**

Gail Anderson, Leslie Beatty, Selma Bell, Margaret Bernier, Diane Bevins, Charlene Callahan, Anne Babson Carter, John Day, Sharon Day, Dawn Dexter, Christina Doyle, Patricia Earle, Tamsen Endicott, Anita Freeman, Judy Friend, Tony Giannelli, Pippy Giuliano, Joan Gorga, Marion Hall, Tom Halsted, John Huss, Bruce Jones, Elizabeth King, Sally Longnecker, Paul McGeary, Heidi McGrath, Sarah Mowitt, Judith Nast, Stevie Neal, Elaine Ohlson, Trudi Olivetti, Ann Pulver, Mary Rhinelander, Maggie Rosa, Anne-Seymour St. John, Teresa Silverman, Trina Smith, Bonnie Sontag, Carol Stearns, Ingrid Swanson, Bonnie Sylvestre, Hazel von Rosenvinge, Miriam Weinstein, Susan Winthrop

**Library & Archives Volunteers**

Peter Anastas, Judy Bannon, Anthea Brigham, Sam Ciolino, Helaine Davis, Mary McCarl, Bing McGilvray, Jane Mead, Judith Nast, Ann Siegal, Howard Thomas

**Collections, Education and Programs**

Jeremy and Kathleen Adams, Les Bartlett, William Cross, Judith Curtis, Sarah Dunlap, William Finch, Prudence Fish, Peggy Flavin, Michael March, Dale Movalli, Lisa Mehlin, Sinikka Nogelo, David Rhinelander, David Rich, Maggie Rosa, Carol Rose, Steve Rosenthal, Brad Story, William Traves, Michael Wall

**Interns**

Erin Landry, *Endicott College*  
 Olivia Melton, *Mt. Holyoke College*  
 Laura Nimblett, *Salem State College*  
 Sam Sklar, *Kent University, England*

**TOM HALSTED (1933-2017)**

Tom's energy, enthusiasm and love for the Cape Ann Museum was deep and broad. Sometime around 1990, he was invited to serve on the Advisory Board involved in the re-installation of the Museum's formal Maritime and Fisheries galleries. His knowledge and opinion was highly valued then, and in 2016, more than 25 years later, Tom was again invited to serve on the Maritime and Fisheries Advisory Team tasked with updating those galleries.

Tom trained as a volunteer docent in 2011. He was highly regarded among his other well-trained peers for his deep knowledge of Cape Ann, of painting and Cape Ann artists, of sailing ships and life at sea and various other sundry topics. Tom was a regular and popular contributor to *Perspectives*, the Museum's magazine, writing about topics as varied as sea serpent sightings in Gloucester Harbor and the carillon bells in the tower of Our Lady of Good Voyage Church. The friendships he developed here enriched our lives and the knowledge, care, and skill Tom devoted to his volunteer work continue to inspire us all.



Erin Landry 2017



Erin Landry 2017

## FITZ HENRY LANE SOCIETY MEMBERS

**\$5,000**

Daniel and Kathelen Amos  
 J.J. and Jackie Bell  
 Stephen and Jill Bell  
 John and Mollie Byrnes  
 Samuel and Rebecca Campbell  
 Norman and Monever Chambers  
 Ted and Jan Charles  
 Mary Craven  
 Alec Dingee and Susan Gray  
 Jack and Anne Haley  
 Jack and Debbie Henning  
 William and Janet James  
 Selina Little  
 Elizabeth Moore  
 Susanna Natti and Alan Willisky  
 Margaret Pearson  
 John Rando  
 Steve and Kit Rosenthal  
 Arthur Ryan  
 Richard and Donna Tadler

**\$2,500**

Robert and Hope Bachelder  
 Clement and Stephanie Benenson  
 Kermit and Glenys Birchfield  
 Thomas Burger and  
 André Robert  
 Richard and Deborah Carlson  
 Linzee and Beth Coolidge  
 Christopher and  
 Bonnie Covington  
 William and Ellen Cross  
 John and Lee Cunningham  
 Betty M. Ellis  
 Charles and Caroline Esdaile  
 Deborah Freeman  
 John and Kathy Galligan  
 Darius and Stephanie Gaskins  
 Henrietta Gates and  
 Heaton Robertson  
 Stephen and Nina Goodick  
 Jerry and Margaretta Hausman  
 William and Rose Hausman  
 Timothy Hilton  
 Thomas and Caroline Hovey  
 William and Anne Kneisel  
 Paul and Christine Lundberg  
 William and Nancy Lynch  
 Daniel and Jenifer McDougall  
 Amy Moore  
 George and Nancy Putnam

Buzz and Lorraine Schulte  
 Jack and Shelagh Schylling  
 Robert and Ashley Scott  
 Hinda Simon  
 Stephen and Lisa Smit  
 Ernst and Gail Von Metzsch  
 Thomas and Kristin Zarrella  
 Charles and Margaret Ziering

**\$1,000**

Filiberto Agusti and  
 Susan Whilton  
 Peter and Lisa Alcock  
 Glen and Pat Alto  
 Robert Amory  
 Christine Bancheri  
 Walter and Gina Beinecke  
 John and Jan Bell  
 Karen Bell  
 Mac Bell and Simone Early  
 Deborah Blake  
 Kevin and Rosemarie Bottomley  
 Michael Bresnan and  
 Mary Ann Shery  
 Horace Brock  
 Thomas Brooks and  
 Karen Newman  
 John and Carroll Cabot  
 John and Sarah Carey  
 Thad Carpen and Susanne Guyer  
 George and Judy Carter  
 Bettie Cartwright  
 Robert Chandler and  
 Ronda Faloon  
 Peter and Katherine Coakley  
 John and Bayard Cobb  
 Allan and Kathe Cohen  
 Herbert Collins  
 Pearce and Phoebe Coues  
 Robert Cox and Karen Bell  
 Robert and Jan Crandall  
 Thomas and Patricia Cronin  
 David and Mary Dearborn  
 Chris and Jane Deering  
 Ronald Druker and  
 Julie Freedman  
 Albert Ellis and  
 Anne-Seymour St. John  
 Joan Ellis and  
 Jun-ya Nakatsugawa  
 John Ellis  
 Thomas Ellis

Kenneth and Alice Erickson  
 Peter Feinstein and  
 Miriam Weinstein  
 Dale and Ann Fowler  
 Ian and Josie Gardiner  
 Michael Gerstein and  
 Katherine Mierzwa  
 Mark Glovsky and Livia Cowen  
 Sargent and Susan Goodchild  
 Tamara Greeman  
 Garth and Lindsay Greimann  
 Stephen and Marion Hall  
 James and Leslie Hammond  
 James Hand  
 James and Mary Hayes  
 Peter and Gerry Herbert  
 Harry and Mary Hintlian  
 Eric and Hilarie Holdsworth  
 Harriet Holdsworth  
 Samuel and Betsy Holdsworth  
 Judith Hood  
 John Iglehart and Suzanne Forte  
 Robert and Pamela Irwin  
 Sally Jackson  
 Thomas Janis and  
 Joseph Weglarz  
 Stephen Kaloyanides  
 Patricia Murphy Kerstein  
 Christine Kinney and  
 Bill Siderewicz  
 Chris and Susan Klem  
 Jan Koch-Weser and  
 Diane Chen Koch-Weser  
 Catherine Lastavica  
 Nancy LeGendre and  
 Walter Herlihy  
 Stephen and Sigrid Lindo  
 Jackie Littlefield  
 Angus and Leslie Littlejohn  
 Ann Lord  
 Joan Lovejoy  
 Marietta Lynch  
 Walter Manninen  
 Lawrence and Barbara Maver  
 Barry and Carol Mawn  
 Elton and Connie McCausland  
 John and Mary Ann McCormick  
 Ann McDonald  
 Katherine McMillan  
 Carol McNeill  
 Roger McNeill  
 Anne Meyer and John Ockenga  
 Richard Mills and Amy Bell

John and Betty Minnick  
 Christine Moore  
 Joe and Eileen Mueller  
 Lee Natti  
 Gregory and Stevie Neal  
 John and Pam Newberry  
 Myranda O'Bara and Jay Somers  
 Carolyn Paradise and  
 James Wayrynen  
 Tami Paumier and Glen Warren  
 John and Sarah Perry  
 Patricia Petrou  
 David Porper  
 George and Kathy Putnam  
 Anthony and Clare Quinn  
 Judson and Lisa Reis  
 Howard and Joan Resnikoff  
 Peter and Lucy Robbins  
 Joe and Maggie Rosa  
 Michael and Patty Rosenblatt  
 Richard and Anne Rosenfeld  
 Neal and Didi Ryland  
 Roger Salisbury and  
 Judith Monteferrante  
 Stuart Scantlebury and  
 Lecia Turcotte  
 Christopher and Eroica Schenck  
 Jack and Judy Shields  
 Thomas and Lyn Shields  
 Tina Snider  
 Steven and Linda Sojda  
 Andrew Spindler and  
 Hiram Butler  
 James Sprague  
 James and Kate Stavis  
 Campbell Steward  
 Peter and Lynda Surdam  
 Ingrid Swanson  
 David and JoEllen Sweet  
 Lynn and Joan Swigart  
 Karen Stone Talwar  
 Keith and Kathy Taylor  
 William and Jolinda Taylor  
 William and Roswitha Traves  
 David and Emily Tyree  
 Michael and Tee Wall  
 Barry and Susan Weiner  
 Kenneth Weiss  
 Peter and Thi Linh Wernau  
 Peter and Winifred Whitman  
 Brent and Linda Wilkes  
 Clive Wood and Stella Martin  
 Edward Zuker and Judi Rotenberg

## MEMBERS

*The Cape Ann Museum depends on the generosity of the people and institutions who share a belief in its mission. The Museum gratefully acknowledges the Museum members who have supported the Museum this year—January 1, 2017 to December 31, 2017.*

**Benefactors \$500**

Mary Barcus  
Davis Buckley  
George Davis and Lisa Bonneville  
Justin and Kari Gale  
Katharine Hamilos  
Ron Nickerson  
Noel Mann and Daan Sandee  
Renee and Mike Minogue  
Eliza Rathbone  
Donald Saunders and Liv Ullmann  
Trina Smith  
Randall and Laura Stevens  
Patrick Vives and Rebeca de Vives  
Clara Wainwright  
Linda Walker  
Matthew Whitlock and Penny Neal

**Sponsors \$250**

Martha Anger  
Stephen and Polly Barbaro  
Robert and Leslie Beatty  
Ed and Sheila Becker  
Selma and Leslie Bell  
Quincy and Natalie Bent  
Thomas and Becky Bernie  
Allan and Phyllis Bezanson  
Elana Brink  
Robert and Barbara Brown  
John and Kate Cabot  
Paul Chabot and Elaine Lewin  
John and Linda Collins  
David Condino and  
Margaret Brady  
Diana Connors  
Nathaniel and Catherine Coolidge  
Albert and Hilary Creighton  
Philip and Eve Cutter  
Martin and Natalie Daley  
Ed and Jody Dove  
John Easton and Sem Sutter  
Barbe Ennis-Abramo and  
Stefan Abramo  
Adele Ervin  
Michael and Mona Faherty  
Diane Faissler  
Newell and Kate Flather  
Elizabeth Fragola and  
Nicholas Senzamic  
Peter and Annette French  
Howard and Naomi Gardner  
Jack and Susan Gardner  
Jonas Gavelis and  
Bonnie Sylvester  
Thomas and Beverly Gillett  
Robert Gillis and  
Pixie Harrington  
John and Andrea Glosky  
Philip Goldsmith and  
Melissa Boshco  
Lilli Gordon  
Mark and Janet Gottesman  
Louise Grindrod and  
Robert Paterson  
Henry and Gail Guild

Bruce and Meg Herman  
Patricia and Randy Hock  
Paul and Betsey Horovitz  
Stephen and Christine Kahane  
Jonathan Katz and Norah Wylie  
Peter and Bobbi Kovner  
Mark Lindsay and  
Martha Morgan Lindsay  
Fred and Jill Lovejoy  
Daniel and Marcy Lyman  
Jane Lyman  
Peggy and Andy Matlow  
Robert and Eileen Matz  
David and Janet McAweeney  
William and Jane McConnell  
Susan McKain and Ken Steiner  
Jay McLaughlan and Sara Stotzer  
Elaine Mosesian  
Jack Nahil  
Matt and Janet Natti  
Nick Novello  
John and Jane Olson  
Samuel and Elisabeth Otis  
Olivia Parker and Helen Brown  
Wendy Pierson  
Penny Pilzer and Daniel Waters  
Oliver Radford and Stephen Perry  
Susan Redgate and Aly Schuman  
Robert and Susan Reece  
John and Jean Rees  
Bud and Margaret Ris  
David and Marie Louise Scudder  
David and Ann Simmons  
Tom and Sally Simons  
David and Ginni Spencer  
Nancy Strisik  
Howard and Betty Thomas  
Josh and Genine Tillotson  
Yuri Tuvim and  
Mary Louise Giuliano  
Chris and Ellen Velline  
Douglas and Priscilla Viets  
Graham and Jan Walker  
Robert and Margaret Wallis  
Pierre and Nancy Warny  
Michael and Candace Wheeler

**Contributors \$100**

Elizabeth Akerley  
Nuna Alberts and Rick Kashuk  
Allen County Public Library  
Katharine Allsopp  
Barbara Almy  
Eugene Alves  
Edward and Mary Anderson  
Gail Anderson and Bill Effner  
Judy Anderson  
William and Yvette Anderson  
Anita Anger  
Alison Anholt-White and  
Nick White  
Judith Avery  
Gordon Baird and Joe Ann Hart  
William and Susan Baldwin  
Devereux and Jilda Barker

Vinse and Carlene Barrett  
Robert and Mary Barthelmes  
Brian and Jodi Bates  
Linda Berard  
Edward and Linda Berger  
Beverly Farms Library  
Jonathan and Diane Bevins  
Louise Blodgett  
Miranda and Ted Boylan  
Peter and Alice Bradford  
Bruce and Joan Bradshaw  
Janice Brand and Robert Grady  
Jonathan Brandon and H. Scheft  
Peter Brau and Bethany Fritzsche  
Chester and Anthea Brigham  
Ralph and Elizabeth Browning  
Lois Brynes and Serena Hilsinger  
Joan Buchanan  
William and Sharon Burton  
Paul Butman and Sharon Lake  
Samuel and Claire Cabot  
Janice Cane and Walter Hess  
Christine and Larry Carsman  
Anne Babson Carter  
Philip Chalmers and Susan King  
Chester and Ellen Clark  
Holly Clay and Larry Langley  
Amy Clements  
Hugh and Joan Collier  
Janet and Gary Cookson  
Peter and Connie Corbino  
Evelyn, Barbara and Judy Cox  
Ray and Monica Crane  
Ronald and Joan Curhan  
Susan Davies and Rick Talkov  
Brian and Beth Davis  
John and Betty Davis  
Craig and Laurel Deery  
Anne Deneen  
Charlesanna and Stephen Detra  
Steven Dieck and Hatsumi Miura  
Michael and Eva Dilascio  
Patricia Donahue and Greg Sacca  
Barbara Donnelly  
Christina Doyle  
Francis Duehay and Jane Lewis  
Patricia Dumas and Esther Joyce  
William Duryea and Anne Bowdoin  
Lucille and Charles Duval  
Richard Einhorn and  
Julie Nagazina  
Tamsen and Dominic Endicott  
Peter and Jan Eschauzier  
Mary Ann Esdaile  
Edward Everett  
Ronald and Sandra Faloon  
Mark and Amy Farber  
Christopher Farmer  
Jay and Helen Featherstone  
Bonnie Fenrock and  
Allan d'Andrea  
Adam Fieldsteel and Irene Mulvey  
William and Judy Friend  
Carolyn Fuchs  
Joseph and Antonine Gal

Steve and Gail Gang  
Charles and Jane Gardiner  
David Gardner and  
Patricia Bridgman  
Timothy and Katerina Gates  
Joseph and Catherine Geary  
Myron and Eileen Geller  
Lester Gimpelson and  
L. G. Cagnasso  
David and Regina Girard  
Susan Glessner  
Gloucester Marine  
Genomics Institute  
Lia Duca Glosky  
Blake Godbout and  
Paula DeGiacomo  
Judith Goetemann  
Deborah and Carol Gonet  
Ruth Goodick  
Michael and Karen Gorton  
Paul Gross and Cornelia Tenney  
James and Katherine Groves  
Mark Haberland  
Mark and Beth Haberland  
William Haberland and  
Millie Manning  
Douglas and Susan Hall  
Hamilton-Wenham Public Library  
Jane Hardy and  
Christopher Olney  
David and Michele Harrison  
Janet Herrmann  
Susan Herron  
Richard Heuser  
James Hickey, Kalmia Design  
Emma Higgins  
Rachel Higgins  
Richard Higgins  
Hal Hirshino and Lois Goodell  
Ted and Susan Hoague  
Harry and Judith Hoglander  
Martha and Thomas Hooper  
Israel and Gillian Horovitz  
Claire Hurst  
Ipswich Public Library  
Nancy Ives  
Robert and Patricia Jedrey  
Karen Johnson  
Carol Judd  
Laura Kerr  
Judith Kirwin  
Jerome and Linda Klein  
Ruth Kolodney and  
Antonio Dimambro  
Miles and Joan Kulukundis  
Michael and Ann Lafferty  
George Langer and Karen Wise  
Stephen and Janet Langer  
Dan and Ann Lasman  
Peter and Sandy Lawrence  
Robert and Martha Lawrenz  
Michael and Nancy Leavitt  
Kenneth and Royce Leonards  
Herman and Ann Lilja  
Martha Lilja-Johnson and  
Abigail Johnson  
Robert and Joan Lockwood  
Richard and Pamela Loomis  
Peter and Elaine Lucas  
Richard Luecke and Perry McIntosh  
Robert Lufkin  
Nancy and G. Lui-Kwan  
Nella and Steven Lush



### RED COTTAGE SOCIETY

*The Red Cottage Society is the Museum's young patron society for art and culture lovers. Launched in 2015, the Red Cottage Society connects individuals under 50 who share an interest in Cape Ann's rich history and vibrant culture through social and educational events.*



#### Patron \$600

Clement and Stephanie Benenson  
Charles and Caroline Esdaile  
Joe and Allison Mueller  
David and Lisa Rich  
Benjamin and Courtney Richardson  
Scott Smith and Christopher Hadley

#### Couple \$300

Oliver and Anne Barker  
Daniel and Katherine Cutler  
Kyle Grant and Nicole Rosmarin  
Terence and Melanie Healey  
Tom and Maryanne Kiely  
Victoria Kunzer and Douglas D'Agata  
Barbara and Matthew Lynch  
Kevin and Emily Madden  
Lisa and Bill Mann  
Liisa Nogelo and Doug Kerr  
Heath and Heather Ritchie  
Omar and Mariann Roca  
Caleb and Natalie Rulli  
Matthew and Sarah Swift

#### Couple \$300 (cont.)

Duncan and Kimberly Wilkinson  
Christopher and Sarah Wolf

#### Individual \$150

Chelsea Bell  
Morgan Bell  
Katelyn Chambers  
Allison Charles  
Amanda Charles  
Eliza Cowan  
Torrance Cullen  
Laura Deluca  
Tatiana Dillen  
Jennifer Fremont  
Francis Hawkins  
Adrian Lauterstein  
Jonathan MacDonald  
Sean and Erin McKay  
Katherine Mittelbushner  
Rachel Neikirk  
Carolyn Peluso  
Carol Hong Richon  
Emily Schuparra  
Rebecca Sorensen

Red Cottage Society members at the studio of artist Caleb Rulli.

Sally Lusk  
Leslie and R.J. Lyman  
Manchester Public Library  
David Manley and Nancy Shorter  
Charles Mann and Connie Dice  
Thomas and Ann Mannle  
Robert and Nancy Marculewicz  
Anthony and Maria Marolda  
David and Louise Marsh  
John and Ethel Martin  
Kristina and Gene Martin  
Rob Martin and Trish Roach  
Alex and Julie Mattera  
Walter and Joyce McGrath  
Kerry McKenna and Jeffrey Logan  
Robert McPhail and Susan Guest  
William McQueen and Carla Bosch  
Herb and Deborah Meiselman  
Memorial Hall Library  
David and Judy Messick  
Fern Miller  
Merritt and Linda Miller  
Carl and Shirley Moores  
Dan and Beth Morris  
Garlan and Jody Morse  
Gretchen and Ned Morse  
Peter and Nadine Mowschenson  
Adin Murray and Elizabeth Winthrop  
Charles and Liane Neuhauser  
Newburyport Public Library  
Craig and Lillian Olmsted  
Elizabeth Olson  
Kevin and Emily O'Malley  
Jerrold Oppenheim and Theo MacGregor  
Robert and Frances Osten  
Eunice and Vincent Panetta  
Leonard Parco and Stephen Keokhanthachone  
Gregg and Susan Parsons  
Kate and Kieran Parsons  
Robert and Katherine Piraino  
David and Joanna Pistenmaa  
Ted and Kathleen Pomfret  
Ronald and Mimi Pruett  
Christopher and Esther Pullman  
Robert and Jan Randolph  
Kay and Martin Ray  
Geoffrey Richon and Melissa Young  
Harland and Ann Riker  
George and Daphne Roark  
John and Sandra Ronan  
James and Julie Rose  
George Rosen and Barbara Gale  
Bruce and Jane Rosenberg  
Melvin and Martha Rosenblatt  
Ronald Ross and Mary Benham  
Albert and Cynthia Roth  
Dick and Olga Rothschild  
Stephen and Janet Sacca  
Russell Sandfield and Sabine Ralston  
Claudine Scoville  
George and Ellen Sibley  
Teresa Silverman  
Marilyn Slade  
Christopher and Cary Smallhorn  
Derek and Rebecca Smith  
Russell and Rosamond Smith  
Elizabeth Solomon and Chad Konecky  
Ellen Solomon and Richard Wyndham  
Thomas and Caroline Spang  
Lee Spence  
Stacey Spingler  
Eileen Sporing and Jocelyn Ramella  
Paul and Elizabeth St. Germain  
Michael Stelluto  
Robert Stern and Gail Howrigan  
David Stirling and Fenton Nelson-Stirling  
Judith Strohm  
Patricia and Francis Sullivan  
T.O.H.P. Burnham Library  
Janet Tsui Tang and Wayne Stimens  
Holly and Laura Tanguay  
Ann Teixeira  
Joyce Thomas  
Peter Thurmond and Miffy Somers  
Bruce and Pat Tobey  
Claire Tomlinson and Edward Garner  
Gerard Townsend  
Meredith and Richard Turcotte  
Peter and Louise Tysver  
Tom Vawter and Anne Hadley  
Blair and Sarah Villa  
Charles and Elaine Von Bruns  
Kristen Wainwright  
Judith Walcott  
Stephen and Anne Warhover  
Cornelius and Corinna Waud  
George and Joan Waterhouse  
Jeffrey and Kathleen Weaver  
Karen and Gretchen Werner  
Anthony and Joreen White  
Richard and Deirdre White  
Bradford and Jenny Whitten  
Alan and Charlotte Wilson  
Kathy Wilson  
Frederick and Susan Winthrop  
Oliver and Carolyn Wolcott  
Peter Wolfskehl and Gail Sarofeen  
Pamela Wood  
Thomas Woodward and David LePere  
Elliot and Janice Wyner  
Suzanne Ziemer

**Member/Member+ \$45 to \$75**  
Mim Aaronian  
Robin Abel  
Anne Ackerman  
Jerry and Carol Ackerman  
Robert Ackerman  
David Adams and Carol Mortimore  
Jan Adams  
Jeremy and Kathleen Adams  
Raymond Agler and John Carter  
Alane Airosus  
Laura Alavosus  
Kathleen Alderfer  
Pat Alderson  
Deborah Aldrich  
Jean Day Alexander  
Nubar Alexanian  
Marie Alfieri  
Francis and Rebecca Aliberte  
Catherine Allard  
John and Lenice Allen  
Meredith Allen and Jerry Cook



William Allison  
 Miriam Altman  
 Daniel and Wendy Altshuler  
 Lois Alves  
 Louise Ambler  
 Thomas Amend and Elizabeth Bish  
 Peter Anastas  
 Patricia Anders  
 Lois Andersen  
 Anne-Marie Anderson  
 Chad and Kim Anderson  
 Dianne Anderson  
 George Anderson  
 Matthew and Cheryl Anderson  
 Peg Anderson  
 Eben and Sandy Andrew  
 Nancy Andrew  
 Willard and Linda Andrews  
 Alva Angle  
 Rory and Jean Ancombe  
 John Appleton  
 Nan Araneo  
 David Archibald and  
 Marion Phipps  
 Melinda Armistead  
 James Armstrong  
 Eva Arnott  
 Elizabeth Auchincloss  
 James Austin  
 Joanne Avallon and Kurt Ogle  
 Alicia Ayer and Foster Thornton  
 James and Elizabeth Ayer  
 Merribel Ayres  
 Isobel Baade  
 Katherine Babson  
 James and Kathy Bacsik  
 Pamela Bailey and Thomas Joyce  
 Thomas and Sheila Baker  
 Tom Balf and Donna Heaney  
 Mary Ballou  
 Duncan and Mara Balsbaugh  
 Ann Banks  
 Catherine Barker-Ross  
 Phyllis Barrett  
 Henry and Liz Barron  
 Les Bartlett  
 Paula Bartlett  
 Martin and Betsy Basch  
 John Bassett and Christina Wolfe  
 Lisa Batchelder  
 Evelyn Bauer  
 Joe Bayes and Lynda Goldberg  
 Elisabeth Bayle and John Elliott  
 Ann Baylies  
 Catherine Bayliss and  
 Michael Lipton  
 Peter and Janice Beacham  
 Kenneth and Helen Beal  
 Susan Beattie  
 Barbara Beauchamp and  
 Susan Raymo  
 Nancy Beaumont  
 Mary Beck and Wilma Busse  
 Beate Becker-Vavak and  
 Stephen Vavak  
 Chas Begg  
 Jo Ann Bell and Marv Tighe  
 Jonathan Bell and  
 Veronique Aubert  
 Judy Bell  
 Rosa Benavides  
 Jack Benedetto and  
 Corinne Trabucco  
 David and Sally Benjamin

Karen and Bill Bergenthal  
 John Berges and  
 Ann Leamon Berges  
 Peter Bergholtz  
 Maureen Berkley  
 Sam and Vivian Berman  
 Karen Berman-Mulligan  
 David and Lida Bernard  
 Kristie Bernard  
 Margaret Bernier and  
 Joanne Schulze  
 Linda Berry  
 Mary Berthold  
 Anthony and Patricia Bertolino  
 Richard and Ellen Bianchini  
 Patti Bibber  
 Ted and Judy Bidwell  
 Bradford Bigelow  
 Carole Bigney  
 Charlotte Bishop  
 John Bishop and Susan Hand  
 Julia Bishop  
 Patricia Bjorling  
 Barbara Bjornson  
 Anita Blackaby  
 Jan David and Barbara Blais  
 Sheila Blake  
 John Blanding  
 Dale Blank and Tom Fox  
 Bernice Blitz  
 Rick Blue and Lindsay Crouse  
 Karen Bluestone and  
 Bruce Cohen  
 Richard and Louise Blumenthal  
 Judith Bly  
 Caroline and Daniel Boardman  
 Hollis Bodman  
 Eric Boeker and Adrienne Howard  
 Judith Bogage  
 Deborah Bohnert  
 Frank and Leslie Bordonaro  
 Steven and Susan Boshi  
 Robert Bosselman  
 Elizabeth Bourguignon  
 Kent and Joan Bowker  
 Glenn and Jane Bowles  
 Barbara Boyce  
 Loring Bradlee  
 John Bradley  
 Sally Bradshaw and  
 Dottie Murkland  
 Suzanne Brailey  
 Joseph and Judith Brain  
 Billings Bramhall  
 Peter and Linda Braun  
 Lewis and Miriam Braverman  
 Ron Breault  
 Donald and Katherine Breen  
 Lise Breen  
 Barbara Brewer  
 Stephen Bridges  
 Linda Briggs  
 Jean Brinton-Jaecks  
 Susan Britt  
 Joseph Brooks  
 Kathleen Broomer  
 Alfred and Deborah Brosch  
 Doug and Cassie Brown  
 Elisabeth Brown  
 Jane and Laura Brown  
 Jean Brown  
 Michael and Betsy Brown  
 Richard and Isabelle Brown  
 Robin and Peter Brown



Gloucester waterfront, circa 1890s. Martha Hale Harvey photograph.

### BUSINESS MEMBERS

*We are grateful to the many local businesses whose membership support helps to sustain the Museum and to strengthen the Cape Ann community as a whole.*

#### Fitz Henry Lane Society

**\$5,000**

Beaumont Hospitality Group

**\$2,500**

Cape Ann Savings Bank

**\$1,000**

Atlantis Oceanfront Inn  
 The Building Center  
 Cape Ann Marketplace  
 Carroll Steele Insurance Agency, Inc.  
 Endicott College  
 KVAssociates  
 Leary Mechanical, Inc.  
 Mariposa  
 Nor'East Cleaners  
 Timothy S. Hopkins Catering

#### Benefactors \$500

Cricket Press, Inc.  
 Jon R. Morse CPA, P.C.  
 Roy Spittle Associates, Inc.  
 Systems Viewpoint, Inc.

#### Sponsors \$250

Elizabeth Clement Fine Arts  
 Essex Alarm and Security, Inc.  
 Frontiero Law Office, P.C.  
 Gloucester House Restaurant  
 Glovsky & Glovsky, LLC  
 Olson Lewis + Architects  
 Timberline Enterprises  
 Vista Motel, LLC  
 W. Herbert Goodick, Inc.  
 Woodman's Inc.

#### Contributors \$100

Bonneville Design  
 C.B. Fisk, Inc.  
 Cape Ann Insurance  
 Agency, Inc.  
 Catherine Ryan Art

#### Contributors \$100 (cont.)

Image Design  
 Deborah Coull Salon  
 Glover's Floor Covering, Inc.  
 Good Harbor Graphics  
 Gorton's Seafood  
 Halibut Point Restaurant  
 Harbor Tours, Inc.  
 Hecht Development  
 Hershey Frame Shop  
 Marty Morgan Pottery  
 Mercury Gallery  
 Professional Career  
 Solutions LLC  
 Pulsifer Associates  
 RE/MAX Advantage Real Estate  
 Katherine Richmond  
 Photography  
 Side Street Gallery  
 Tremont Auctions  
 Trident Gallery  
 Virgilio's Bakery



- Millicent Bruce  
 Paul Brunick  
 William and Barbara Bruns  
 Bettina Buchs and David Kalman  
 Frederick and Stephanie Buck  
 David Buckles and Andrea Milder  
 Carolyn Buckley  
 Erich and Jennifer Buddenhagen  
 Betsy Bullock  
 Kendra Bullock  
 Mark and Elizabeth Bunal  
 Carol Bundy  
 Lorraine Bunker  
 Mary Burgarella  
 Kevin Burke  
 Jane Burke-Miller  
 Charles and Maria Burnham  
 Jeanine Burns and  
 John Doberman  
 Jan and John Burrus  
 Joseph Butler and Nancy Davis  
 William and Gerrie Butman  
 Ann Byers  
 Elaine Byrne  
 Paula Bzdula and David DeMoura  
 Peter and Marian Cain  
 James and Charlene Callahan  
 Bruce and Ann Campbell  
 Pamela Campbell  
 Marie Campello  
 Danielle Kam-Shan Capalbo  
 Cynthia Capone  
 Cathryn Capra  
 Douglas and Sarah Caraganis  
 Robin and Kenneth Carlo  
 Joe Carper and Sue McKittrick  
 Randolph Carr and  
 Gabrielle Barzaghi  
 Mary Carroll and Kathy Coelho  
 Susan Carroll  
 Kathleen Caruson  
 Louisa Casadei-Johnson  
 Arnold and Kathleen Casavant  
 Sherri and Patrick Casey  
 Robert Cashman and Lynn Browne  
 Deborah and Robert Cassidy  
 Vincent Castagnacci  
 Jo-Ann Castano  
 Andrea Caswell  
 Carol Cataldo  
 Frances Caudill  
 Holly Cavanaugh  
 Verne and Madeline Caviness  
 Suzanne Cervo  
 Robert Chadbourne  
 Lawrence Chakrin  
 Scott Channell  
 Sally Chapdelaine and  
 Steven Wood  
 Philip Chase and Karen Kenny  
 Michael and Jill Chipperini  
 Claudette Chmura  
 Melissa Ciucci  
 Nathaniel and Hester Clapp  
 Andi Clark  
 Robert and Carroll Clark  
 Ruth Ann Clark  
 Gail Clifford  
 James Clyde  
 Candace Cochrane  
 Jean Coffey  
 Dana and Virginia Cohen  
 Dave and Sharron Cohen  
 Irma Cohen  
 Susan Cohen and Edwin Cowart  
 Deb Colbert  
 Patty Colbert  
 Frances Colburn  
 William and Betsey Colby  
 Doris Cole  
 Ruth Collier and Jay Davis  
 Robert and Sally Collini  
 Pat Collins  
 Elizabeth Colt  
 Frank and Judith Conahan  
 George and Patricia Conant  
 Stuart and Cynthia Conant  
 Lorna Condon  
 Susan Condon  
 John and Polly Connors  
 Denis and Jeanne Conroy  
 William Conway  
 Linda Cook  
 Jon and Geri Corbino  
 Kathleen Corcoran  
 Vernon Cormier  
 Kathryn Costa  
 Rosemary Costello  
 Chris Counihan and  
 Eleanor Marks  
 Fara Courtney and Jack Clark  
 Deborah Cowan  
 Frederick Cowan and  
 Richard Gardner  
 David Cox  
 Kitt Cox and Theresa Dady-Cox  
 Robert Coyne  
 Evelyn Craaybeek  
 Carol Craig  
 Lisa Craig  
 Bonnie Crane  
 Jannette Crespo  
 Robert and Ruth Crocker  
 Kathy Cross  
 Ruth Cross  
 Kim Crouse  
 David and Martha Crowley  
 Damon and Melissa Cummings  
 Megan Cummings  
 Pat Cummings  
 Joan Cumiskey  
 Andrew Cunningham and  
 Dr. Kelsey McNiff  
 Benjamin and Kaia Cunningham  
 John and Jane Cunningham  
 Robert and Jean Cunningham  
 Ronald and Joan Curhan  
 Henry and Judith Curtis  
 Jonathan Cutter  
 Lynn and John Cutter  
 Jennifer Dahlgren  
 James and Patricia Dalpiaz  
 Susan Dalton and William Bazel  
 Susan Daly  
 Alev Danis and David Moschella  
 Brian and Debra Darby

Checking out vintage surfboards at *Surf's Up* at the White-Ellery House in July; Museum goes get oriented in the Central Gallery and students view ship models in the Fisheries Gallery; The Murray family (Grace Murray at far right) at the *Hats Off to Spring: A Celebration of Grace Murray* event in March.



Carl and Mimi Darrow  
 Martha Davis  
 Nancy Davis  
 Richard and Laura Davis  
 John and Sharon Day  
 Lisa Day-Copeland  
 Daniel Days  
 Barbara DeCoste  
 Stephen and Marta Deely  
 Michael and Jackie DeFalco  
 Peter and Karen DeLacy  
 Charlene Delaney  
 Louis DeLena  
 Robert and Ann DeMaine  
 Anne Demeter  
 Aristides and Ilene Demetrios  
 Virginia Dench  
 Mark Deveau  
 James and Sharon Deveney  
 Bruce and Veronica Devon  
 Steve and Dawn Dexter  
 Anita Diamant and Jim Ball  
 Phyllis Dickson  
 James and Fafa Diedrich  
 Julie Dillard  
 Melissa Dimond and  
 Gretchen Putnam  
 Genevieve Dionne  
 Helene Dionne and  
 Barry Claycomb  
 Carol Dirga  
 George and Claire Dix  
 Alexandra D'Maris and  
 William Hunt  
 Mark Dobson and Susan Dobson  
 Franklin and Frederica Doeringer  
 Nina Doggett  
 Erik and Janelle Dombrowski  
 Margaret Donahue  
 David Donovan  
 Ariane Doud  
 Moira Dougherty  
 Richard Douglas  
 Kathy Downer  
 Christine Downing  
 Barbara Drake  
 Christine Draper and  
 Jan Lindholm  
 Patricia and Liza Dugan  
 William and Jean Dugan  
 Sarah Dunlap  
 Cynthia Dunn and Sandra Barry  
 J.P. and Andrea Dunn  
 Donna Dussault  
 Philip and Ann Dwight  
 Pat Earle  
 William and Deborah Ebeling  
 Ruth Edmonds  
 Carleton and Virginia Ekborg  
 Martha Elder  
 Celia Eldridge  
 Deborah Eliason  
 Thomas Ellis  
 Robert and Surrey Elwell  
 Gary Emmer  
 Diane and Robert Emmons  
 Mary Emmons  
 Carl Erikson  
 John and Betty Erkkila  
 Susan Erony and Jay Jaroslav  
 Sharon Erwin  
 Patricia Evans  
 Susan Everitt  
 Jeneth Fahey and Peter Higgins

Cindy and John Farrell  
 Ron Farren and Kristal Pooler  
 Barbara Farrer  
 Beverly Feinberg-Moss  
 Phyllis Feld  
 Tom and Jennifer Fels  
 William and Lyn Fenollosa  
 Ricardo Fernandez and  
 Diana Keller  
 Jane Ferreira  
 Alfred and Deborah Fichera  
 Charles Fields  
 Joseph Filippone and Laurel Rossi  
 William Finch and Carol Rose  
 Guy and Andrea Fincke  
 Carole Findley  
 Prudence Fish  
 Christian and Michelle Fisher  
 Kristine Fisher and  
 Richard Crangle  
 Frances Frangl  
 Richard and Caroline Fitzpatrick  
 Mary Flaherty  
 Thomas Flaherty and  
 Elizabeth Lalik  
 Peggy Flanagan  
 Ellen Flatley  
 Ronald and Eleanor Fleet  
 Colin Fleming  
 Mary Jo and Stephen Foley  
 Tamasin Foote  
 Ken and Rachel Ford  
 Paul Forman  
 Gregg and Martha Fox  
 Bonnie Foz  
 Karl Frank  
 Robert and Joanne Frascella  
 Audrey Fraser and Richard Stoloff  
 Anita Freeman and Phillip Albright  
 Judi Freeman and Tony Rudie  
 Linette French  
 Terry and Elizabeth French  
 Nancy Frieden  
 John and Ruth Fritz  
 Marion Frost  
 Bruce and Elizabeth Gable  
 Jack Gale  
 William and Bonnie Gale  
 Dorothy Ganick  
 Roger Garberg and Marion Sibley  
 Peter Gardiner  
 David and Alice Gardner  
 Deborah Gardner  
 Frank and Janet Garrison  
 Grace Garrison  
 Julia Garrison and Andre Beaulieu  
 Susan Gaylord  
 Gerry and Eloise Gehr  
 Frederick and Faye Geisel  
 Dixie George  
 Cornelia Gephart  
 Katherine German  
 Paul Gerry  
 Deborah Geurtze and  
 Michael Friedman  
 Anthony and Marjorie Giannelli  
 Gregory Gibson and  
 Anne Marie Crotty  
 Leonardo Gilardi  
 Mary Given  
 Tracy Gleckner and  
 Don Rittenburg  
 Tony and Samantha Goddess  
 Rosalyn Gold

## GRANTS

*In 2017 the Cape Ann Museum applied for and was the grateful recipient of financial support for operations and special projects from the following funders:*

### American Historical Print Collectors Society, Inc.

**\$376** Support to conserve *View of Norwich, from the West Side of the River 1849*, a colored lithograph on paper by Fitz Henry Lane (detail above). Funding for this work was provided by Wendy Shadwell Bequest's to the American Historical Print Collectors Society.

### Brace Cove Foundation

**\$6,000** Funds to support *Young at Art for Head Start*, a Pathways for Children program.

### Bruce J. Anderson Foundation

**\$7,000** Support for *CAM Connections* program, an art/history experience for individuals with memory loss.

### Garland Legacy Project

**\$20,000** Funds to update and reprint Joseph E. Garland's *Gloucester Guide* and to design/deliver related educational programming.

### Highland Street Foundation

**\$2,500** Support for *Free Fun Fridays* programming.

### International Fine Print Dealers Association

**\$3,000** Support for the exhibition *Drawn from Nature & on Stone: The Lithographs of Fitz Henry Lane*.

### Massachusetts Cultural Council Cultural Facilities Fund

**\$50,000** Support for a Building Studies project.

**\$12,000** Operations Support.

### National Endowment for the Humanities

**\$30,000** Support to create a plan to redesign the Fisheries Galleries.

### Society of Colonial Wars, Commonwealth of Massachusetts and the National Chapter of the Society for Colonial Wars

**\$3,378** Support for the White-Eltery House Stabilization project.

## THE TADLER INTERNSHIP

In 2017 Board Member Richard Tadler kindly sponsored an annual internship opportunity that includes a stipend for college and graduate students to develop their academic interest further while making a contribution to Cape Ann art/history scholarship. This year's recipient, Peggy Calkins, is a graduate student at Simmons College's Library and Information Science program. She is working on a digital version of the *Unfolding Histories* exhibition under the direction of guest curator Molly Hardy. When completed the exhibition will be featured on our website and will serve as a template for designing future online exhibitions.

The Cape Ann Museum is grateful to the Tadler Family for their support of this initiative.

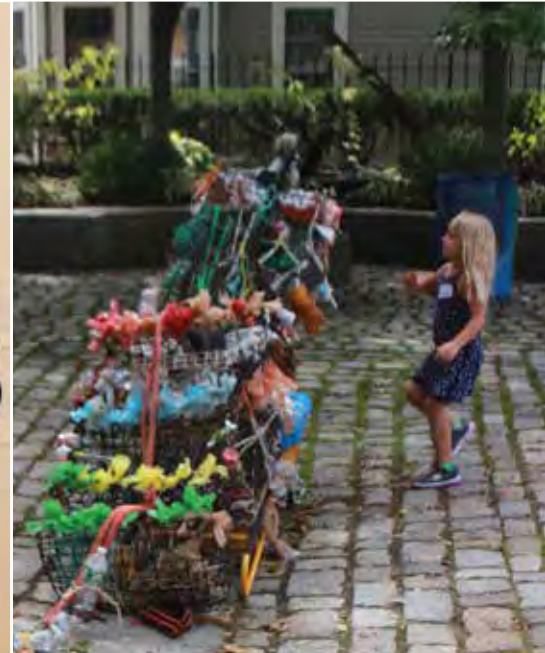


Gretchen Golden  
 Josette and Louis Goldish  
 Barry Goldman and  
 Margaret Franklin  
 Curtis Gollrad and Dale Brown  
 Susan Goodall  
 Francis and Evelyn Goodhue  
 Leonard and Cheryl Goodman  
 Robert Goodman  
 Pamela and Barrett Goodspeed  
 Heidi Goodwin and Powell Dixon  
 Jane Goodwin  
 Peter and Jan Goodwin  
 Jacques Gordon and  
 Elizabeth Wiltshire  
 Nate Gordon  
 Carmine and Joan Gorga  
 Pattie and Jerry Goulart  
 Jane Graham-Dwyer  
 Carol Gray  
 Margi Green  
 Marcia Greenbaum  
 David and Katherine Greenberg  
 David Grey  
 Linda Greyser and  
 Stephen Greyser  
 Joyce Griffin  
 Gary Griffin and Leslie Pearlman  
 Frank Griswold  
 Fred and Laura Groff  
 Lauren Gudonis  
 Josie Guerin  
 Margaret Guest  
 Gail Guitarr  
 Catherine Gunn  
 Nancy Guselli  
 Carl and Judy Gustin  
 Janis Guter  
 Robert and Judith Gwozdziewicz  
 Elizabeth Habich  
 Sarah Ann Hackett  
 Lisa Hahn

Caroline Haines  
 Jennifer Hale and James Sirois  
 Thomas and Barbara Ann Hale  
 Myra Hall  
 Kathy Haller  
 Laura Hollowell  
 Isabella Halsted  
 Thomas and Joy Halsted  
 Michael Hamill  
 Lois Hamilton  
 Gay Peters and  
 Frederick Hammond  
 Ed and Susan Hand  
 Benjamin Hansbury  
 Betsy Harding  
 David and Kaethe Harding  
 Marion Harding  
 Bonnie Hardy  
 Molly Hardy  
 Margaret Harney  
 Sylvia Harper  
 Andrew Harris and  
 Katherine Culhane  
 Buck Harris  
 Carolyn Harris  
 Daniel Harris, IV  
 Sandra Harris  
 Ann Harrison and James Starkey  
 Barbara Harrison  
 Nancy Harrison  
 Edward Hart and Anita Robboy  
 Katrina Hart  
 Lois Haslam  
 Barta and Lee Hathaway  
 John and Ruth Hautala  
 Laurence and Laura Hawkins  
 Stephanie Hecht  
 Susan Hedman  
 Leslie Heffron  
 Robert Heinman and Susan Field  
 Cynthia Hendrickson  
 Nancy Hendrickson

William and Joy Hennessey  
 Robert Henriques and  
 Jane Singer  
 Benjamin Herbert  
 Edward Herman  
 Gale Hermanet  
 Rich Hersey  
 Hazel Hewitt  
 Jacqueline Hickey  
 Sheila Higgins  
 Toby Higgins  
 John Hinckley  
 Brian and Kathleen Hines  
 Margaret Hinrichs  
 John Hintlian  
 Deborah Hird  
 Nancy Hodgkins  
 Ana Hoel  
 Susan Conant Holden  
 Nick and Debe Holland  
 Herb and Meg Hollender  
 John and Elizabeth Holmberg  
 Jennifer Holmgren  
 Frank and Nancy Holt  
 Lisa Holt  
 William and Lynn Holton  
 Juliana and Peter Hood  
 Lorraine Horn  
 Luther and Betty Hosford  
 Amy and Seamus Houlihan  
 Stephen and Jeanne Howard  
 Jay and Llewellyn Howland  
 Eleanor Hoy  
 Ken and Billie Hruby  
 Jack and Betty Hubbard  
 Amy and Gerhard Huber  
 Victoria Hughes  
 Rosalie and John Hughs  
 Amanda Hurd  
 Ann Hurd and John Rodenhiser  
 Daniel and Priscilla Hurley  
 Jean and Victor Hurst

John and Sally Huss  
 Bette Hutchins  
 Marilyn Hyde  
 Shelby Hypes  
 Paula Ives  
 William Jackson  
 Edith Jacobs  
 William and Margaret James  
 Diane Jaquith  
 Michael and Betsy Jasper  
 John and Emily Jay  
 Steve and Debby Jencks  
 Peter Jenner and  
 Carol Catalano  
 Bobby Jenness  
 Ray Jenness  
 Charlotte Jennings  
 Aaron Jerome  
 Ann Johnson  
 Anne Johnson  
 Dianne and David Johnson  
 James and Diane Johnson  
 Mayo and Julie Johnson  
 Patricia Johnson  
 Wayne Johnson  
 Bruce Jones and Tina Cross  
 Earl and Suzy Kadiff  
 Alan and Carol Kamin  
 Marietta Kamin  
 Ellen Kaminski  
 Kara Kaminski  
 Karla Kaneb  
 David and Meredith Kantor  
 David and Bonnie Kaplan  
 Eric and Cynthia Kaplan  
 Ken and Cathy Kaplan  
 Donna Katan  
 Louis Kaucic and William Merritt  
 George and Linda Kauss  
 Reed Kay  
 Judy and James Kearney  
 Joan Keefe



Students from O'Maley Middle School on a field trip; Jeremy Adams takes a bow following a harpsichord performance; A young visitor secures the lines in the Activity Center; Docent Mary Rhinelander and Board Member Bill Cross at a reception in October; Reimagining the Gloucester Sea Serpent in recycled materials during Essex Heritage's *Trails & Sails* day.

Gavin Keenan  
Katherine Keith  
Jane Kelleher  
Barbara Kelley  
Eileen Kelley  
Michael Kelley and Marny Williams  
Pamela Kelley  
Deborah Kelsey  
Richard and Randolph Kelts  
Gail Kennedy  
Fred and Lenore Kepler  
Michael and Fiona Kerr  
Carolyn Kilcline  
Marilyn Kimball  
Peggy Kimball  
Craig and Hannah Kimberley  
Elizabeth King  
Mark and Judith King  
Jen Kirk and Stephen Labonte  
Earl and Sharon Kishida  
Lois Klee  
John Klein and Liese Elerin  
Lois Lehman Knaus  
Laurence and Annette Knight  
Daniel and Cathy Knowlton  
John and Collete Knowlton  
Victoria and James Knowlton  
Paula Knuuttunen  
Neil Kobrosky and Linda Gipstein  
Lee Kochler and Brian Ward  
Peter and Karen Koch-Weser  
Susan Kolwicz and Ken Parker  
Mary Jane Kornachi and  
Jack Silversin  
Lee Kowalski  
John and Janet Koza  
Thomas and Laura Kozachek  
Bruno and Barbara Kozel  
Norman Krause

David Kriebel and  
Margaret Quinn  
James and Bette Jean Krieger  
James and Elizabeth Kubik  
Laszlo and Suzanne Kubinyi  
Martha Kurz  
Peter and Elaine Kuttner  
Vanessa Labbe  
James LaBelle and  
Martha Whitney  
Mark Lacey and Susan Fehrmann  
Robert Laford  
Nancy LaFosse  
Mark Laliberte  
Pam Lally  
Barbara Lambert  
Gary Lambert  
Gene Landis and David Donavel  
Lynn Lane  
Maria Lane  
Sandra Lane  
Sherrin Langelier  
Gerrit Lansing  
Henry and Penny Lapham  
Virginia LaPlante  
Donna Lardiere  
Karen Larsen and Ron Donnell  
Joseph and Karolina Latronica  
Thomas and Grace Lattorf  
Milton and Helen Lauenstein  
Linda Lavery  
Jennifer Lawrence  
David Leach and  
Laurie LaChapelle  
Margery Leach  
Tamara Leaf  
Christopher and Kathryn Leahy  
Constance Leahy  
Brenda LeClerc and Laurel Seneca

Daniel and Gail LeClerc  
Suzanne and Kevin Lee  
Margaret Leeco  
John LeJeune and Mary Donovan  
Wayne and Marguerite Lemmon  
Janet Lemnah  
David and Lisa Lemont  
Martha Lennon  
Richard Leonard  
Peter and Roxanna Leone  
Lucille LePage  
Janet Lepanto and  
Richard Metzinger  
Mary Ellen Lepionka  
Roger and Susan Levine  
David and Persis Levy  
Monty Lewis and  
Camilla MacFadyen  
Ruth Liebermann  
Joyce Light  
Wiliam Lillis  
Marilyn Lincoln  
Susan and David Lincoln  
Diane Lindquist  
Carol Linsky  
Nathan and Susan Lipsett  
Marie-Noelle Little  
Barbara Littlefield  
Elizabeth Littlefield  
Sarah Longnecker  
Deborah Loomis and  
Edwin Jylkka  
Kathryn and George Lordan  
Edith Loring-Thomas  
Margaretta Lovell  
Beverly Low  
Richard and Elizabeth Lowe  
Deborah Lucas  
Beth Luchner and Jeffrey Berman

Marianne Lufkin  
Robert Lukach  
Sheila Lummis  
Matthew and Rosemary Lundberg  
Chris and Peggy Lyman  
Susan Lyons  
Jonathan MacDonald  
J.D. MacEachern  
Anne MacLean  
Kenneth and Natalya MacWilliams  
Amanda Madeira and Mike Parker  
Robert and Maryellen Magner  
Axel Magnuson and  
Sylvia Viresendorp  
Linda Mahajan  
Donald Maier  
Bruce Maki and Ann Piette  
Rick and Laney Makin  
Tim and Stephanie Malarkey  
Maureen Malloy  
John and Christine Maney  
Theodore Manning  
Thomas Manning and  
Barbara Polan  
Pamela Mansfield  
Michael March and  
Elizabeth Mehlin  
Jeannette Marchant  
Charles Marcous  
Joseph Mari  
Virginia Markell  
Adah Marker  
Louise Marks and Faye Bergsman  
Susan Marr  
Yssabel Marren and Mark Andrew  
Suzanne Marsh  
Jeff Marshall and Phoebe Potts  
Lee Marshall and Paul Goldberg  
Deborah Marston

Esther Martin and Richard Shaw  
 Miguel and Kristina Martinez  
 Robert and Meredythe Martinez  
 Jake and Karen Maslow  
 Constance Mason  
 Katia and Bill Mason  
 Marylyn Mason  
 Karen Matthews  
 Martha and Francis Mayo  
 Cheryl Mazer  
 Kathleen McCadden  
 Jean McCafferty  
 Henry and Mary McCarl  
 Clifford McCarthy  
 Danielle McCarthy  
 Patricia McCarthy  
 Seania McCarthy and  
 Dan Lampert  
 Roy and Shelagh McCauley  
 John McClellan  
 Diana McCloy and Mike Perrow  
 Peter McClure  
 James and Pauline McCready  
 Kevin McDonough and  
 Susan Lillis  
 Paul and Catherine McGeary  
 Mary Jane McGlennon  
 Juliana McGovern  
 Marianne McGowan and  
 Rick Scaramozza  
 Heidi McGrath  
 Michele McHugh  
 Athena McInnis  
 Janet McIntyre  
 Ann McKay  
 Carol McKenna  
 Kathy McLear and  
 Kevin Hutchinson  
 Carole McLellan  
 Charles and Doreen McManus  
 Cynthia McNamara  
 Paul McNiff  
 Shaun and Catherine McNiff  
 Jane Mead  
 Judythe Meagher  
 Thompson Mechem and  
 Elizabeth Spofford  
 Natalie Medici  
 Linda Medwid and  
 Marvin Kushnet  
 Edmund and Dee Meeker  
 Robert and Mary Mehlman  
 Kristin Mellen  
 Michael and Heli Meltsner  
 Jeremy Melvin  
 Ruth Menicocci  
 Roger and Joanne Mercaldi  
 David Michael  
 Thomas and Jo-Ann Michalak  
 Mia Millefoglie  
 JoAnn Millen  
 Walter Miller and  
 Bernadette Carr  
 Margaret Mills-Michael  
 Helen Mitchell  
 Patricia Mitchell  
 Dorothy and Ed Monnelly  
 Janet Montgomery  
 Frances Moon  
 Michael Moonves and  
 Baba Davenport  
 Alicia and Peter Moore  
 Charles and Judith Moore  
 James Moore and Richard Reidy  
 Joyce Moore  
 Kathleen Moore  
 Martha Morgan and  
 Dan Ottenheimer  
 Veronica Morgan  
 Wendy Morgan  
 Mary Lou Morison  
 Jim and Kris Moroney  
 John and Shirley Morris  
 Andrew and Ann Morrison  
 Diana Morse  
 Priscilla Moulton  
 Peter Mourant  
 Geoffrey and Barbara Movius  
 Sarah Mowitt  
 William and Linda Mueffelmann  
 Donald Muirhead and  
 Mary Jane Crotty  
 Kerry Mullen and Deb Hardy  
 Paula Mullendore  
 Christiane Munkholm and  
 Dan Bacon  
 Kris Munroe  
 Emily Murphy  
 Jan and Ed Murphy  
 Walter and Linda Murphy  
 Avis Murray  
 David and Grace Murray  
 Richard and Elizabeth Murray  
 Judith Nahas  
 Monica Nardone  
 Scott Nason  
 Judith Nast  
 George Neilson  
 Hart Nelsen  
 Barbara Nelson  
 Beebe and Duncan Nelson  
 Mark Nelson and David Oliver  
 Valerie Nelson  
 Susan Nestler  
 John and Kate Newhall  
 Charles and Suzanne Newman  
 Elizabeth Nicasastro  
 Ann Nichols  
 Leslie Nicholson  
 Andrew and Catherine Nickas  
 Stephen and Susan Niemi  
 Mary Sue Nienstedt-Santos  
 Paul Niski  
 Glenn and Linda Nix  
 Carol and Robert Noble  
 Joseph and Sinnika Nogelo  
 Sandra Northrup  
 Claire Norton  
 Peter and Liz Nugent  
 Giuseppe and Grace Numerosi  
 Sarah Oaks  
 Rachel Oberai-Soltz and  
 Arnold Soltz  
 Gail O'Docherty  
 Kerry O'Donnell and  
 Roy Campana  
 Elizabeth O'Grady  
 Elaine Ohlson  
 Antony Ohman  
 Molly Oldfield  
 Michael O'Leary  
 Susan Oleksiw  
 Judith Oleson  
 Jim and Trudi Olivetti  
 Ann Olson  
 Nancy Olson  
 Margaret O'Malley  
 Peter and Charleen Onanian  
 Philip O'Neil and Lynn McWhood  
 Ann and William O'Neill  
 Kathleen O'Neill  
 Laura O'Neill and Patrick Nauseda  
 Sally O'Neill  
 Robert Oot and Carol Robey  
 Linda Osburn  
 Richard and Alice Osgood  
 Rae O'Shea  
 Jonathan and Deborah Ostrow  
 Paula O'Sullivan  
 Karen and Stephen Ouellette  
 Beth Paddock  
 Robin Paine  
 Ann Paladin and George Story  
 Don and Melissa Palladino  
 Bethe and Steven Palmer  
 Elizabeth Parillo  
 Norma Parisi  
 Christy Park  
 Oliver and Barbara Parker  
 Robert and Donna Parry  
 Peter Parsons and Barbara Oliver  
 Sandra Pascal  
 Emily Passman and Franny Osman  
 Elizabeth Passmore  
 Phyllis Paster  
 Joanne Paul  
 Heidi Paulson and Robert Flaherty  
 Jane Paznik-Bondarin and  
 Andrew Kaelin  
 Martha Peabody  
 Davis and Deborah Pearce  
 Martha Peer and Jamie Mayer  
 Bruce Perkins  
 Eve Perkins  
 Isabel Perkins  
 Roy Perkinson  
 Ronald and Margaret Perrin  
 Candance Perry  
 James Perry  
 Robert and Susan Perry  
 Barbara Perryclear  
 David and Alison Pesky  
 Georges and Carolyn Peter  
 Karen Petersen  
 Judith Peterson  
 Karin Peterson  
 Marcia Faye Peterson  
 Arley and Miriam Pett  
 Barrett and Lydia Petty  
 Lorna Phillely  
 George and Joann Phillips  
 Steven Phillips and Amy Gault  
 Kathleen Piaggese  
 Jon and Cassy Pickard  
 Sarah Picone  
 Ralph and Marie Pisaturo  
 Christine Pitman  
 Paul andCarolynn Pitman  
 Deborah Pitts  
 David Pleuler and Eileen Murphy  
 Susan Pollack and  
 Eric Schoonover  
 Joanne Ponte  
 Patricia Poore  
 Dale and Leslie Pope  
 Carole Porter  
 Janos and Kornelia Posfai  
 Jeffrey Postel  
 Keith Powers and Jacquelyn Ball  
 William and Katherine Prater  
 Ellen Preston  
 Mary Alice Price  
 William and Elizabeth Prickett  
 Esther Proctor  
 Agnes Puff  
 Bob and Ann Pulver  
 Hans Pundt and Lynne Sausele  
 Kathleen Purdy  
 Mary Putonen  
 John Pydynkowski and  
 Diane Smith  
 Susan and Richard Quateman  
 Mary Rafferty  
 Christina Rafter  
 Olga Rakich  
 Brett and Ellen Ramsey  
 William and Jennifer Rand  
 Herb Randle  
 Robert and Susan Ranta  
 Nancy Rappa  
 Jon Rassler and Carol Kowalski  
 Wardwell Ratcliff  
 Janet Rattray and Barbara Buswell  
 Patricia and Joel Ray  
 Mark and Laurie Raymond  
 Kinley and Bonnie Reddy  
 Ruth Rehfus  
 Andrew and Jessie Reid  
 Kelly Reynolds  
 Frederic and Patricia Rhinelander  
 Ken Rief  
 Andi Rice  
 David and Angela Rich  
 Laura Richane and Dave Belleville  
 Nicole Richon-Schoel  
 Sheila Rider  
 Thomas Riggs  
 Thomas and Deborah Riquier  
 Karen Ristuben  
 Bob and Andrea Ritchie  
 Jessica Roberts  
 June Roberts  
 Lilian Roberts  
 Julia Robinson and Didier Tellier  
 Anne Rockwell and Jack Sweeney  
 Martha Rodweller  
 Sandra Roedel  
 Harold and Linda Rogers  
 Elizabeth Roland  
 Jane Rollins  
 Wendy and John Root  
 Barbara Rose  
 Marie Rose  
 Dale Rosen and Terry Segal  
 Ellen Rosen  
 Sue Ann and Alan Rosenthal  
 Doreen Ross  
 Susan Ross  
 Nancy Rossi  
 Jon and Bonnie Rotenberg  
 Alison Rowell  
 Bradford Rowell  
 Edward and Susie Rowland  
 Carolyn Roy  
 Ellin Royds  
 James Royer  
 Robert Ruderman and  
 Susan Caruso  
 Pauline Runkle and Robert Beurit  
 Robert Russell  
 Emily and Brian Russo  
 Doris Rust

Kathleen and Donald RuzECKi  
 Donald and Thelma Ryan  
 James and Judith Ryan  
 Robert and Patricia Ryan  
 Teri Ryan  
 Charles and Jane Rzepka  
 John Salisbury  
 Patrick Salony and  
 Christine McGrath  
 Jeffrey and Christa Sammons  
 William Sano  
 Kathleen Santo  
 Diane Sargent  
 Dawn and John Sarrouf  
 James and Mary Saunders  
 Mary Jane and William Sawyer  
 Tom Schaefer  
 Naomi Schalit and John Christie  
 Betty Lou Schlemm  
 Thomas Schmidt  
 Deb and Peter Schradieck  
 Grace Schrafft  
 Judith L. Schroeter  
 Stephen Schultz and  
 Jennifer Sinclair  
 William Schulz and Beth Graham  
 Lully Schwartz  
 Meilseoir and Zeruah  
 Schwartzthal  
 Jessica Schwarzenbach and  
 Paul Hackett  
 Claudia Schweitzer and  
 Brent Davison  
 Gail Scully and James Liebmann  
 Sally Seamans  
 Gail and Jim Seavey  
 Martha Seavey  
 John and Marcia Seward  
 Geoffrey and Emma Seymour  
 Beverly Shafer  
 Abe Shaffer and Sandra Haire  
 Judith and Stanley Shapiro  
 Steven and Eileen Shapiro  
 Jerry and Cynthia Sharfstein  
 Bruce and Sandy Shaw  
 Dona Shea  
 James Shea  
 Karen Sheldrick  
 Wayne and Hazel Sheppard  
 Hatsy and William Shields  
 Jeffrey and Marlene Shindell  
 Dianne Shortall  
 Edward and Kaye Lynn Shoucair  
 Annie Shreffler  
 Davina Shuman  
 Charles Shurcliff  
 David and Christine Sidon  
 Julie Sidon  
 Anne Siegel  
 Marcia Siegel  
 Steve and Barbara Sienkiewicz  
 Dorothy Sieradski  
 Ed and Barb Silberman  
 Daniel and Rita Simard  
 Deborah Simmerman  
 Lois Simmonds  
 Manuel Simoes

Joan Sindall and  
 MacGregor Freeman  
 Richard and Priscilla Singleton  
 Shirlye Slater and Sara Zink  
 Tracy Slater  
 Diane and Michael Slezak  
 Bruce and Kathy Slifer  
 Leigh Slingluff  
 Isabel Sloane  
 Richard Sloane  
 John and Betty Smallwood  
 James and Martha Smeallie  
 Eric Smith  
 Errol Smikle  
 Daniel Smith  
 Nancy Smith  
 Sally Smithwick and Bruce Novak  
 Wayne and Heather Soini  
 Andrew Soll  
 Bonnie Sontag  
 Joseph and Helen Soussou  
 JoAnn Souza  
 Cecily Spencer  
 Newt and Judith Spurr  
 Katie St. John  
 Danuta Stachiewicz  
 Suzanne Stacy  
 Mark and Janet Standley  
 Elaine Starrett  
 Hoff and Lizel Stauffer  
 June Steel  
 Muriel Lee Steele  
 Robert Stefani  
 Vivienne Steinbock and  
 Michael Mendelsohn  
 Charles Steiner  
 John and Candace Stella  
 Jane Stempel  
 Anne Sterling  
 Paul Stetzer  
 Laura Stevens  
 Laurel Stevens  
 Ann Stewart  
 Doug Stewart  
 Evelyn Stewart  
 Charmaine Stickney  
 Lois Stillman  
 Margaret Stocker  
 Mark Stolle  
 Sandra Stolle  
 Betty Stone  
 Stanley Stone  
 Warren and Virginia Stone  
 William and Ellen Stone  
 Annie Storr and  
 Steve Mummendey  
 Heidi Stowe  
 Pamela Stratton and Kathryn Tuck  
 Cathy Stutz  
 John Stutz and Zoe Stewart  
 Patrick and Dolores Sudbay  
 Gerry Sullivan and Lois Dagle  
 Michael and Cheryl Sullivan  
 Tim Sullivan  
 Bill Sumner  
 Bernice Svedlow  
 Joan Sweeney



A family gathering in the Lane Gallery during the Highland Street Foundation's  
*Free Fun Friday*; Annual FHL summer party hosted by Gib and Sarah Carey; Opening  
 reception for *Kodachrome Memory: Nathan Benn's North Shore 1978*; Janet  
 and Steven Langer and Board Member Hinda Simon at the Captain's Party.

MEMBERS

Marie Sweeney  
 Larry and Marilyn Swift  
 Marie Swinson  
 Paul Sylva and Christine Becker  
 Cori Taggart  
 Anthony Tappé  
 Frederick Tarr  
 Norma Tarr  
 Jeff and Ruth Taylor  
 Mary Taylor and Harold Burnham  
 William Taylor  
 Susan Teel  
 Catherine Ten Eyck and  
 Elizabeth Marchant  
 Mary Thielscher  
 Lori Thorstensen  
 Kim Tieger  
 Burton Tinker and Ruth Perrault  
 Linda Tosi and  
 Howard Burkholder  
 Ed Touchette and Mary Healy  
 Maria Touet  
 Susan Tournas  
 Catherine Tousignant and  
 John Cunningham  
 David Tower and Robin Hoffman  
 Terese Trapani  
 Edmund Traverso  
 Keith and Janet Trefry  
 Paul and Maureen Trefry  
 Maureen Tripp  
 Robert and Joyce Tuffley  
 Horace Turner  
 Janice and Bruce Turner  
 Sarah Tuvim  
 George and Suzanna Ulrich  
 James Utterback  
 William Vachon  
 Dwight Valentine  
 Constance Vallis  
 Peter and Kathleen Van Demark  
 Juni Van Dyke  
 Allan and Andrea Van Gestel  
 Martha VanKoevinger  
 Dina Vargo and Malini Biswas  
 Laura and Frank Ventimiglia  
 Robert and Jane Viator  
 Regina Villa  
 Elaine Vogel  
 Anna Vojtech  
 Dorothy Von Rosenvinge  
 Hazel Von Rosenvinge  
 Theodore and  
 Linda Von Rosenvinge  
 Ralph and Ana Waddey  
 Lauria Waddleton  
 Maura Wadlinger  
 Oliver and Ellen Wadsworth  
 Anne and Jon Waisnor  
 Sage and Linda Walcott  
 Paige Waldron  
 Kimball and Jean Walen  
 Frederick and Martha Wales  
 Edward and Eva Walker  
 Susan Walker  
 Meg Wallace and  
 Sandy Anderson  
 Christopher Walter

Katherine Walters  
 Alan and Sarah Ward  
 Anne DeSouza Ward and  
 James Ward  
 Allison Warren  
 Lynne Warren-Szostek and  
 Daniel Szostek  
 James and Lea Watson  
 Karen and Peter Watson  
 Serena Watson  
 Deborah Way  
 Mary Weatherall and  
 Miranda Updike  
 Suellen Wedmore  
 Norman and Ruth Weeks  
 Jan Weinshanker  
 Richard Weiss and  
 Barbara McLaughlin  
 Mary Weissblum  
 Richard and Rosemary Weissman  
 Francis and Lindsay Weld  
 Paul Wels  
 Diana Welsh  
 Inga Wennik  
 David and Jennifer West  
 Elizabeth West  
 John Westerberg  
 Jean Whelan  
 Bruce and Anne Whilton  
 Alexi Whitaker  
 Anne White  
 Marit White  
 Tad and Muffy White  
 William Whitham and  
 Ellen Lefferts  
 William and Deborah Whiting  
 Terri Whitney  
 Alice Whittaker  
 Ted Widmer and  
 Mary Rhineland  
 Amy and Michael Wiklund  
 Dan Wilcox  
 Phil Wilde  
 Beth Williams  
 Kathleen Williams  
 Peter and Lynne Williams  
 Susan Willis  
 Margaret Willmann  
 Jon Wilson and Sherry Streeter  
 Sam and Brooke Wilson  
 Nancy Winslow  
 David and Enid Wise  
 Chuck Wisner and Kata Hull  
 Andrew and Mary Wittkower  
 Robert and Emily Wolfe  
 Susannah Wolfe  
 William Wood and Debby Hughes  
 Bruce and Brenda Woodbury  
 Jane Woolway  
 Martha Wright  
 Sib and Judy Wright  
 Jim and June Wulff  
 Carole Yeager  
 Barbara Younger  
 Christine Zampell  
 Heidi Zander  
 Carol Ann Zapustas  
 Samuel and Ann Ziergiebel



Erin Landry 2017



Party goes at CAM Afterhours; Carole Findley and Folly Cove Designer Lee Steele; Holiday shopping at the Women's Luncheon; Docent Jill Carter Babson and young friends.



## DONORS

The Museum gratefully acknowledges the donors who have supported the Museum with gifts this year—January 1, 2017 to December 31, 2017.

**\$100,000+**

Estate of Norma Andrews

**\$50,000 to \$99,999**

William and Janet James  
John Rando  
Arthur Ryan  
Ernst and Gail von Metzsch

**\$10,000 to \$49,999**

Anonymous  
J.J. and Jackie Bell  
Stephen and Jill Bell  
Kermit and Glenys Birchfield  
Samuel and Rebecca Campbell  
*Ada Howe Kent Foundation*  
Linzee and Beth Coolidge  
*Dusky Foundation*  
Christopher and  
Bonnie Covington  
Mary Craven  
Betty M. Ellis  
*William V. and Betty M.  
Ellis Foundation*  
Charles and Caroline Esdaile  
Henrietta Gates and  
Heaton Robertson  
Jack and Anne Haley  
Jerry and Margaretta Hausman  
Thomas and Caroline Hovey  
Selina Little  
Elizabeth Moore  
Margaret Pearson  
George and Nancy Putnam  
Richard and Donna Tadler  
Thomas and Kristin Zarrella

**\$5,000 to \$9,999**

Daniel and Kathelen Amos  
Clement and Stephanie Benenson  
*Vesper Foundation*  
John and Mollie Byrnes  
*Peter and Elizabeth  
Tower Foundation*  
Richard and Deborah Carlson  
Norman and Monever Chambers  
Ted and Jan Charles  
Allan and Kathe Cohen  
*Selma and Bayness  
Andress Foundation*  
John and Lee Cunningham  
Alec Dingee and Susan Gray  
*Caldwell Foundation*  
Darius and Stephanie Gaskins  
Jack and Debbie Henning  
Peter and Gerry Herbert  
*Charles and Stella  
Guttman Foundation*  
Stephen Kaloyanides  
William and Anne Kneisel  
Jay Last  
Milton and Helen Lauenstein  
Nancy LeGendre and  
Walter Herlihy  
*Brace Cove Foundation*  
Paul and Christine Lundberg

William and Nancy Lynch  
Estate of Constantine Maletskos  
Susanna Natti and Alan Willsky  
Susan Pollack and  
Eric Schoonover  
*Kanter Kallman Foundation*  
David and Lisa Rich  
Robert and Ashley Scott  
Stephen and Lisa Smit  
Edward Zuker and Judi Rotenberg

**\$1,000 to \$4,999**

Filiberto Agusti and  
Susan Whilton  
Peter and Lisa Alcock  
Glen and Pat Alto  
Babson Historical Association, Inc.  
Robert and Hope Bachelder  
Christine Bancheri  
John and Jan Bell  
Karen Bell  
Mac Bell and Simone Early  
Joanne Berwind  
Deborah Blake  
Michael Bresnan and  
Mary Ann Sherry  
Thomas Brooks and  
Karen Newman  
Thomas Burger and  
André Robert  
John and Carroll Cabot  
John and Sarah Carey  
Thad Carpen and Susanne Guyer  
George and Judy Carter  
Bettie Cartwright  
*Capricorn Foundation*  
Robert Chandler and  
Ronda Faloon  
Peter and Katherine Coakley  
John and Bayard Cobb  
Pearce and Phoebe Coues  
Robert Cox and Karen Bell  
Robert and Jan Crandall  
Thomas and Patricia Cronin  
Philip and Eve Cutter  
David and Mary Dearborn  
Chris and Jane Deering  
Aristides and Ilene Demetrios  
Ronald Druker and  
Julie Freedman  
Barbe Ennis-Abramo and  
Stefan Abramo  
Kenneth and Alice Erickson  
Peter Feinstein and  
Miriam Weinstein  
Newell and Kate Fletcher  
Dale and Ann Fowler  
Deborah Freeman  
Justin and Kari Gale  
John and Kathy Galligan  
Ian and Josie Gardiner  
Sargent and Susan Goodchild  
Stephen and Nina Goodick  
Tamara Greeman  
Garth and Lindsay Greimann  
Stephen and Marion Hall

Joy Halsted  
Katharine Hamilos  
James and Leslie Hammond  
James Hand  
William and Rose Hausman  
James and Mary Hayes  
Timothy Hilton  
Harry and Mary Hintlian  
Harriet Holdsworth  
Judith Hood  
John Iglehart and Suzanne Forte  
Robert and Pamela Irwin  
Sally Jackson  
Thomas Janis and Joseph Weglarz  
Robert and Patricia Jedrey  
Timothy and Sandy Kelliher  
Patricia Murphy Kerstein  
Chris and Sue Klem  
Peter and Bobbi Kovner  
Catherine Lastavica  
Jane Lewis  
Stephen and Sigrid Lindo  
Jackie Littlefield  
Ann Lord  
Joan Lovejoy  
John Lynch  
Marietta Lynch  
Walter Manninen  
Lawrence and Barbara Maver  
Barry and Carol Mawn  
John and Mary Ann McCormick  
Ann McDonald  
Daniel and Jenifer McDougall  
Katherine McMillan  
Carol McNeill  
Roger McNeill  
Richard Mills and Amy Bell  
John and Betty Minnick  
Amy Moore  
Christine Moore  
Joe and Allison Mueller  
Joe and Eileen Mueller  
Lee Natti  
Gregory and Stevie Neal  
John and Pam Newberry  
Myranda O'Bara and Jay Somers  
Carolyn Paradise and  
James Wayrynen  
Tami Paumier and Glen Warren  
John and Sarah Perry  
Patricia Petrou  
George and Kathy Putnam  
Anthony and Clare Quinn  
Judson and Lisa Reis  
Howard and Joan Resnikoff  
Elizabeth Rhineland and  
Peter MacEwen  
Joe and Maggie Rosa  
Michael and Patty Rosenblatt  
Richard and Anne Rosenfeld  
Louis Rusitzky Marital Trust  
Roger Salisbury and  
Judith Monteferrante  
Stuart Scantlebury and  
Lecia Turcotte  
Christopher and Eroica Schenck

Buzz and Lorraine Schulte  
Jack and Shelagh Schylling  
John and Judy Shields  
Thomas and Lyn Shields  
Hinda Simon  
Scott Smith and  
Christopher Hadley  
Steven and Linda Sojda  
Andrew Spindler and Hiram Butler  
James Sprague  
James and Kate Stavis  
Campbell Steward  
Peter and Lynda Surdam  
Ingrid Swanson  
David and JoEllen Sweet  
Lynn and Joan Swigart  
Keith and Kathy Taylor  
William and Jolinda Taylor  
David and Emily Tyree  
Linda Walker  
Michael and Tee Wall  
Stephen and Anne Warhover  
Barry and Susan Weiner  
Peter and Thi Linh Wernau  
Peter and Winifred Whitman  
Brent and Linda Wilkes  
Clive Wood and Stella Martin  
Charles and Margaret Ziering

**\$500 to \$999**

John and Lenice Allen  
Robert Amory  
Martha Anger  
Mary Barcus  
Geoffrey Bayliss  
Margaret Bernier and  
Joanne Schulze  
Robert Bosselman  
Michael and Betsy Brown  
Robert and Barbara Brown  
Davis Buckley  
David Condino and  
Margaret Brady  
Albert and Hilary Creighton  
George Davis and Lisa Bonneville  
Debbie DeCotis  
Steve and Dawn Dexter  
John Easton and Sem Sutter  
Robert and Surrey Elwell  
Tamsen and Dominic Endicott  
Jacqueline George  
Nathaniel and Joan Gorton  
Carl and Judy Gustin  
Douglas and Susan Hall  
Terence and Melanie Healey  
Eric and Hilarie Holdsworth  
John and Sally Huss  
Jonathan Katz and Norah Wylie  
Stephen and Janet Langer  
Peter and Sandy Lawrence  
Mark Lindsay and  
Martha Morgan Lindsay  
Angus and Leslie Littlejohn  
Fred and Jill Lovejoy  
Noel Mann and Daan Sandee  
Rob Martin and Trish Roach  
Elton and Connie McCausland  
Anne Meyer and John Ockenga  
Renee and Mike Minogue  
Sarah Mowitz  
New England Fishery  
Management Council  
John and Jane Olson



Erin Landry 2017



Erin Landry 2017



CAM Adjunct Maritime Curator Erik Ronnberg working on a conservation project in the galleries; a quiet moment in the WWII Veterans exhibit; Family fun at CAM Kids STEAM "Bird" Day.

Kate and Kieran Parsons  
 Karen Peters  
 George and Joann Phillips  
 Keith Powers and Jacquelyn Ball  
 Red Dory Productions  
 Benjamin and Courtney Richardson  
 John and Sandra Ronan  
 Marie Rose  
 Paul and Barbara Russell  
 David and Marie Louise Scudder  
 Trina Smith  
 Randall and Laura Stevens  
 Susan Wagner  
 Matthew Whitlock and Penny Neal

**\$250 to \$499**

Gail Anderson and Bill Effner  
 Peg Anderson  
 Anita Anger  
 Bonnie Angus  
 Katherine Babson  
 Gordon Baird and Joe Ann Hart  
 Stephen and Polly Barbaro  
 Oliver and Anne Barker  
 Robert and Leslie Beatty  
 Ed and Sheila Becker  
 Beate Becker-Vavak and Stephen Vavak  
 Morgan Bell  
 Selma and Leslie Bell  
 Thomas and Katherine Ben-Aroch  
 David and Lida Bernard

Thomas and Becky Bernie  
 Allan and Phyllis Bezanson  
 Ted and Judy Bidwell  
 Rick Blue and Lindsay Crouse  
 Sally Bradshaw and Dottie Murkland  
 Peter and Linda Braun  
 Elana Brink  
 Erich and Jennifer Buddenhagen  
 Joseph Butler and Nancy Davis  
 William and Gerrie Butman  
 John and Kate Cabot  
 Janice Cane and Walter Hess  
 Randolph Carr and Gabrielle Barzaghi  
 Suzanne Cervo  
 Paul Chabot and Elaine Lewin  
 Katelyn Chambers  
 Kevin and Kathleen Clancy  
 William and Betsey Colby  
 Hugh and Joan Collier  
 John and Linda Collins  
 Diana Connors  
 Nathaniel and Catherine Coolidge  
 Donald and Marge Cregg  
 Martin and Natalie Daley  
 Priscilla Deck and Sean Kelly  
 Laura Deluca  
 James and Sharon Deveney  
 Nina Doggett  
 Ed and Jody Dove  
 Christina Doyle  
 David and Barbara Dunfee

Sarah Dunlap  
 Lucille and Charles Duval  
 Hilliard and Cathy Ebling  
 Mary Emmons  
 Adele Ervin  
 Mary Ann Esdaile  
 Diane Faissler  
 Tom and Jennifer Fels  
 Elizabeth Fragola and Nicholas Senzamici  
 Jennifer Fremont  
 Peter and Annette French  
 Bruce and Elizabeth Gable  
 Howard and Naomi Gardner  
 Jonas Gavelis and Bonnie Sylvester  
 Bob and Pixie Gillis  
 Mark Glovsky and Livia Cowen  
 Philip Goldsmith and Melissa Boshco  
 Lilli Gordon  
 Mark and Janet Gottesman  
 Louise Grindrod and Robert Paterson  
 James and Katherine Groves  
 Henry and Gail Guild  
 Robert Henriques and Jane Singer  
 Bruce and Meg Herman  
 Patricia and Randy Hock  
 Harry and Judith Hoglander  
 Herb and Meg Hollender  
 Kathryn Hollett

Paul and Betsey Horovitz  
 Kathleen Irwin  
 Karen Johnson  
 Stephen and Christine Kahane  
 Tom and Maryanne Kiely  
 Peggy Kimball  
 Jen Kirk and Stephen Labonte  
 Victoria Kunzer and Douglas D'Agata  
 George Langer and Karen Wise  
 Daniel and Marcy Lyman  
 Jane Lyman  
 Barbara and Matthew Lynch  
 Kevin and Emily Madden  
 Rick and Laney Makin  
 Mary Malone  
 David Manley and Nancy Shorter  
 Lisa and Bill Mann  
 Michael March and Elizabeth Mehlin  
 Peggy and Andy Matlow  
 Robert and Eileen Matz  
 David and Janet McAweeney  
 Henry and Mary McCarl  
 William and Jane McConnell  
 Susan McDermott  
 Kimberly McGovern and Frank Scherkenbach  
 Janet McIntyre  
 Susan McKain and Ken Steiner  
 Sean and Erin McKay  
 Jay McLaughlan and Sara Stotzer  
 John and Pauline Miceli

John Moran  
 Dan and Beth Morris  
 Jack Nahil  
 Mark Nelson and David Oliver  
 Liisa Nogelo and Doug Kerr  
 Nick Novello  
 Molly Oldfield  
 Craig and Lillian Olmsted  
 Elizabeth Olson  
 Olivia Parker and Helen Brown  
 Davis and Deborah Pearce  
 Penny Pilzer and Daniel Waters  
 Ted and Kathleen Pomfret  
 David Porper  
 Frank and Ellen Previte  
 Oliver Radford and Stephen Perry  
 Olga Rakich  
 Suzan Redgate and Aly Schuman  
 Robert and Susan Reece  
 John and Jean Rees  
 Bud and Margaret Ris  
 Heath and Heather Ritchie  
 Omar and Mariann Roca  
 Rockport Music  
 Patrick Salony and  
 Christine McGrath  
 Bruce and Ellen Shain  
 David and Ann Simmons  
 Tom and Sally Simons  
 Richard and Priscilla Singleton  
 Diane and Michael Slezak  
 James and Martha Smeallie  
 Derek and Rebecca Smith  
 Tina Snider  
 David and Ginni Spencer  
 Eileen Sporing and  
 Jocelyn Ramella  
 Suzanne Stacy  
 Carol Stearns  
 Bob and Carolyn Stewart  
 Nancy Strisik  
 Angela Sweeney  
 Matthew and Sarah Swift  
 Ann Teixeira  
 Howard and Betty Thomas  
 John and Marilyn Thompson  
 Ed Touchette and Mary Healy  
 Yuri Tuvim and  
 Mary Louise Giuliano  
 Chris and Ellen Velline  
 Douglas and Priscilla Viets  
 Kristen Wainwright  
 Graham and Jan Walker  
 Robert and Margaret Wallis  
 David and Mary Warner  
 Pierre and Nancy Warny  
 Allison Warren  
 Cornelius and Corinna Waud  
 Michael and Candace Wheeler  
 Christopher and Sarah Wolf  
 Sib and Judy Wright  
 Scott Zamore

**\$100 to \$249**

Robert Ackerman  
 Vera Alcalay and Family  
 Allen County Public Library  
 Barbara Almy  
 Eugene Alves  
 Lois Alves  
 Edward and Mary Anderson  
 William and Yvette Anderson  
 John Appleton

Rodney and Kitty Armstrong  
 Joanne Avallon and Kurt Ogle  
 Judith Avery  
 James and Elizabeth Ayer  
 David and Val Babson  
 William and Susan Baldwin  
 Devereux and Jilda Barker  
 James and Chris Barker  
 Stephen and Kitty Barrand  
 Vinse and Carlene Barrett  
 John Bassett and Christina Wolfe  
 Brian and Jodi Bates  
 Catherine Bayliss and  
 Michael Lipton  
 JoAnn Beck  
 Chelsea Bell  
 Jo Ann Bell and Marv Tighe  
 David and Sally Benjamin  
 Sally Bent  
 Linda Berard  
 Edward and Linda Berger  
 Beverly Farms Library  
 Jonathan and Diane Bevins  
 Charlotte Bishop  
 Dale Blank and Tom Fox  
 Louise Blodget  
 Karen Bluestone and  
 Bruce Cohen  
 Rebecca and Clay Booma  
 Steven and Susan Boshi  
 George and Rose Bottger  
 Kevin and Rosemarie Bottomley  
 Miranda and Ted Boylan  
 Bruce and Joan Bradshaw  
 Billings Bramhall  
 Janice Brand and Robert Grady  
 Peter Brau and Bethany Fritzsche  
 Chester and Anthea Brigham  
 Michael and Caroline Brogan  
 Dale Brown  
 Elisabeth Brown  
 Richard and Isabelle Brown  
 Ralph and Elizabeth Browning  
 Lois Brynes and Serena Hilsinger  
 Joan Buchanan  
 Paul Butman and Sharon Lake  
 Elaine Byrne  
 Samuel and Claire Cabot  
 Jill Cahill  
 Peter and Marian Cain  
 Robin and Kenneth Carlo  
 Christine and Larry Carsman  
 Anne Babson Carter  
 Philip Chalmers and Susan King  
 Allison Charles  
 Chester and Ellen Clark  
 Ruth Ann Clark  
 Holly Clay and Larry Langley  
 Dana and Virginia Cohen  
 Irma Cohen  
 Susan Cohen and Edwin Cowart  
 Frances Colburn  
 Janet and Gary Cookson  
 Jon and Geri Corbino  
 Peter and Connie Corbino  
 Andrew and Dyane Cotreau  
 Frederick Cowan and  
 Richard Gardner  
 Ray and Monica Crane  
 Jannette Crespo  
 William and Ellen Cross  
 David and Martha Crowley  
 Robert and Jean Cunningham

**2017 CORPORATE DONORS****\$2,500 to \$9,999**

Atlantis Oceanfront Inn  
 Cape Ann Savings Bank

**\$1,000 to \$2,499**

Cape Ann Marketplace  
 Carroll Steele Insurance  
 Agency, Inc.  
 Cricket Press, Inc.  
 Gorton's Seafood  
 J. Barrett Real Estate  
 Jon R. Morse CPA, P.C.  
 KVAssociates  
 Leary Mechanical Inc.  
 Nor'East Cleaners  
 United Technologies  
 W. Herbert Goodick, Inc.

**\$500 to \$999**

Roy Spittle Associates, Inc.  
 Systems Viewpoint, Inc.

**\$250 to \$499**

Cape Ann Insurance  
 Agency, Inc.  
 Deborah Coull Salon  
 Defalco Painting Company  
 Elizabeth Clement Fine Arts  
 Essex Alarm and Security, Inc.  
 Frontiero Law Office, P.C.  
 Glovsky & Glovsky, LLC  
 Koo De Kir-Interior  
 Architecture  
 Liquor Locker

**\$250 to \$499 (cont.)**

Olson Lewis + Architects  
 Timberline Enterprises  
 Vista Motel, LLC

**Up to \$250**

Bonneville Design  
 C.B. Fisk, Inc.  
 Good Harbor Graphics  
 Halibut Point Restaurant  
 Hecht Development  
 Jerry Enos Painting Co. Inc.  
 The Law Office of Meredith Fine  
 Marty Morgan Pottery  
 Mercury Gallery  
 Professional Career  
 Solutions LLC  
 Pulsifer & Associates  
 Catherine Ryan  
 Art Image Design  
 Side Street Gallery  
 Trident Gallery  
 Virgilio's Bakery

**Matching Gifts**

Gorton's Seafood  
 Johnson & Johnson  
 Matching Gifts Program  
 Merrill Lynch Wealth  
 Management/Bank of  
 America  
 Peabody Energy Matching Gifts  
 United Technologies  
 Verisk Analytics

*Middlesex Mills, Lowell, Mass. Oil on canvas. Unattributed and undated. Collection of the Cape Ann Museum. Gift of the American Textile History Museum, 2017.*

## THE ALFRED MANSFIELD BROOKS SOCIETY



*Alfred Mansfield Brooks (1870-1963), long time president and curator of the Cape Ann Museum, was responsible for assembling what would ultimately become the largest and finest collection of works by marine artist Fitz Henry Lane (1804-1865). The AMB Society was established in 2009 to honor the generosity of Robert L. and Elizabeth French and to serve as an acknowledgement*

*of gratitude to the long line of donors who have shaped the Museum's collection. The Society recognizes those who have made a donation of art, artifacts or archival materials, or who have provided funds for the purchase or conservation of such at a minimum of \$10,000 on or after September 2009.*

Raymond Agler and  
John Carter  
Robert Amory  
Willard and Linda Andrews  
J.J. and Jackie Bell  
Diana Bell  
John and Jan Bell  
Karen Bell  
Timothy Bell  
Kermit and Glenys Birchfield  
Rick Blue and Lindsay Crouse  
Estate of Dorothy A. Brown  
Ninon Chaet  
Cleveland Cook  
Linzee and Beth Coolidge  
Mary Craven  
William and Ellen Cross  
Ronald and Joan Curhan  
Rockport Art Association  
Jonathan and Louisa  
Fairbanks  
Hilary Fairbanks-Burton and  
Tim Burton  
Kristine Fisher and  
Richard Crangle  
Jonathan French  
Peter and Annette French  
Ian and Josie Gardiner  
Helen Garland  
Henrietta Gates and Heaton  
Robertson  
Myra Hall  
James Hand  
Bruce and Meg Herman  
Cindy Holloran  
James Hooper  
William and Janet James  
Joan Klimann  
Jan Koch-Weser and Diane  
Chen Koch-Weser  
Estate of Richard Kuehne  
Milton and Helen Lauenstein  
Paul Lohnes  
Meg Lustig

Estate of Constantine  
Maletskos  
George Maletskos  
Walter Manninen  
John and Ethel Martin  
Alfred Mayor  
Gail Mazur  
Daniel and Jenifer  
McDougall  
Mary Jane McGlennon  
Joseph Mesquita  
Hugh Morton  
*Manton Foundation*  
The Estate of Anna  
Crouse Murch  
Estate of Anne H. Oaks  
Amy Oaks  
James Oaks  
Lawrence Oaks  
Martha Oaks  
William Oaks  
Margaret Pearson  
Susan Pollack and  
Eric Schoonover  
*Kanter Kallman Foundation*  
John Rando  
Rebecca Reynolds and  
David Montgomery  
Ross and Leanne Robinson  
Arthur Ryan  
Stephen and Virginia Sandy  
Linda Schreyer  
Gergely Schreyer Collection  
Martha Smith  
Kristi Stangeland  
Ingrid Swanson  
William and Roswitha Traves  
*The Umberto Romano  
and Clorinda Romano  
Foundation, Inc.*  
Clara Wainwright  
Martin Whyte and  
Alice Hogan

Ronald and Joan Curhan  
Henry and Judith Curtis  
Vincent D'Andrea  
Alev Danis and David Moschella  
Susan Davies and Rick Talkov  
John and Betty Davis  
Nancy Davis  
John and Sharon Day  
Stephen and Marta Deely  
Craig and Laurel Deery  
Peter and Karen DeLacy  
Charlesanna and Stephen Detra  
Anita Diamant and Jim Ball  
Barbara Donnelly  
Christine Draper and  
Jan Lindholm  
Patricia Dumas and Esther Joyce  
Sue Durkin  
William Duryea and  
Anne Bowdoin  
Richard Einhorn and  
Julie Nagazina  
Charlotte and Larry Eliot  
John and Betty Erkkila  
Peter and Jan Eschauzier  
Donna Fairservice  
Mark and Amy Farber  
Christopher Farmer  
Jay and Helen Featherstone  
William and Lyn Fenollosa  
Ricardo Fernandez and  
Diana Keller  
Alfred and Deborah Fichera  
Adam Fieldsteel and Irene Mulvey  
William Finch and Carol Rose  
Ronald and Eleanor Fleet  
Linette French  
William and Judy Friend  
Martha Frigoletto  
Germaine Fritz  
Marion Frost  
Carolyn Fuchs  
David Gardner and  
Patricia Bridgman  
Joseph and Catherine Geary  
Frederick and Faye Geisel  
Myron and Eileen Geller  
Gregory Gibson and  
Anne Marie Crotty  
Robert Gillis and Pixie Harrington  
Paul and Valerie Gilman  
Lester Gimpelson and  
L. G. Cagnasso  
David and Regina Girard  
Charles Gladstone and  
Elaine Souza  
Tracy Gleckner and  
Don Rittenburg  
Susan Glessner  
Gloucester Marine  
Genomics Institute  
Lia Glovsky  
Mark Goetemann  
Deborah and Carol Gonet  
Ruth Goodick  
Michael and Karen Gorton  
Stephen and Linda Greyser  
Lauren Gudonis  
Robert and Judith Gwozdziejcz  
Thomas and Barbara Ann Hale  
Robert and Meg Hall  
Hamilton-Wenham Public Library  
Bonnie Hardy  
Sylvia Harper  
David and Michele Harrison  
Francis Hawkins  
Laurence and Laura Hawkins  
John and Joline Hentschel  
Janet Herrmann  
Susan Herron  
Richard Heuser  
Hal Hirshon and Lois Goodell  
Arthur and Eloise Hodges  
Nancy Hodgkins  
Nick and Debe Holland  
John and Elizabeth Holmberg  
Jennifer Holmgren  
Martha and Thomas Hooper  
Israel and Gillian Horovitz  
Ken and Billie Hruby  
Amy Huber and Gerhard Huber  
Ann Hurd and John Rodenhiser  
Claire Hurst  
Ipswich Public Library  
Nancy Ives  
Peter Jenner and Carolin Catalano  
Carol Judd  
David and Bonnie Kaplan  
Eric and Cynthia Kaplan  
Eileen Kelley  
Michael Kelley and  
Marny Williams  
Judith Kirwin  
Earl and Sharon Kishida  
Joseph Kittredge and  
Winand van Eeghen  
Jerome and Linda Klein  
John and Collete Knowlton  
Neil Kobrosky and Linda Gipstein  
James and Bette Jean Krieger  
Miles and Joan Kulukundis  
Martha Kurz  
Peter and Elaine Kuttner  
Michael and Ann Lafferty  
Gene Landis and David Donavel  
Dan and Ann Lasman  
Thomas and Grace Lattof  
Adrian Lauterstein  
David Leach and  
Laurie LaChapelle  
Brenda LeClerc and Laurel Seneca  
Daniel and Gail LeClerc  
John LeJeune and Mary Donovan  
Kenneth and Royce Leonards  
Janet Lepanto and  
Richard Metzinger  
David and Persis Levy  
Ruth Liebermann  
George and Kathleen Lieser  
Martha Lilja-Johnson and  
Abigail Johnson  
Carol Linsky  
Warren and Jean Little  
Peter and Elaine Lucas  
Richard Luecke and  
Perry McIntosh  
Robert Lufkin  
Nancy and G. Lui-Kwan  
Nella and Steven Lush  
Sally Lusk  
Jonathan MacDonald  
Allen and Fran Maltz  
Manchester Public Library  
John and Christine Maney  
Charles Mann and Connie Dice  
Carroll Manning

Thomas Manning and  
 Barbara Polan  
 Thomas and Ann Mannle  
 Jeannette Marchant  
 Robert and Nancy Marculewicz  
 Louise Marks and Faye Bergsman  
 Anthony and Maria Marolda  
 David and Louise Marsh  
 Deborah Marston  
 John and Ethel Martin  
 Kristina and Gene Martin  
 Sophia Martz  
 Alex and Julie Mattera  
 Kathleen McCadden  
 Roy and Shelagh McCauley  
 Scott and Mimi McDougal  
 Mary Jane McGlennon  
 Dennis McGurk  
 Michele McHugh  
 Donna McIntire  
 Charles and Doreen McManus  
 Robert McPhail and Susan Guest  
 Jay McQuaide  
 William McQueen and  
 Carla Bosch  
 Joseph Mechem  
 Robert and Mary Mehlman  
 Herb and Deborah Meiselman  
 Jeremy Melvin  
 Memorial Hall Library  
 David and Judy Messick  
 Fern Miller  
 Merritt and Linda Miller  
 Walter Miller and Bernadette Carr  
 Katherine Mittelbush  
 Michael Moonves and  
 Baba Davenport  
 Carl and Shirley Moores  
 Martha Morgan and  
 Dan Ottenheimer  
 Andrew and Ann Morrison  
 Garland and Jody Morse  
 Gretchen and Ned Morse  
 Everett and Pamela Morss  
 Eben and Heather Moulton  
 William and Linda Mueffelmann  
 Donald Muirhead and  
 Mary Jane Crotty  
 Emily Murphy  
 Jeffrey and Leslie Murphy  
 Adin Murray and  
 Elizabeth Winthrop  
 Lynn Murray  
 Museum of Fine Arts, Boston  
 Brooke Neer  
 Valerie Nelson  
 Charles and Liane Neuhauser  
 Newburyport Public Library  
 Ronald Nickerson  
 Elaine Ohlson  
 Kevin and Emily O'Malley  
 Ann and William O'Neill  
 Robert Oot and Carol Robey  
 Janice and Martha Orlich  
 Philip and Linda Osborne  
 Rae O'Shea  
 Robert and Frances Osten  
 Eunice and Vincent Panetta  
 Leonard Parco and  
 Stephen Keokhanthachone  
 T.D. and Gretchen Parker  
 Gregg and Susan Parsons  
 Isabel Perkins  
 Candance Perry  
 Georges and Carolyn Peter  
 Chris and Jane Phillips  
 Steven Phillips and Amy Gault  
 Jon and Cassy Pickard  
 Robert and Katherine Piraino  
 Ralph and Marie Pisaturo  
 Paul andCarolynn Pitman  
 Dale and Leslie Pope  
 Ronald and Mimi Pruett  
 Frederick and Barbara Pryor  
 Christopher and Esther Pullman  
 Bob and Ann Pulver  
 Deborah Quirk-Timmer  
 William and Jennifer Rand  
 Robert and Jan Randolph  
 Kay and Martin Ray  
 Kathy Restuccia  
 Geoffrey Richon and  
 Melissa Young  
 Harland and Ann Riker  
 Thomas and Deborah Riquier  
 George and Daphne Roark  
 Peter and Lucy Robbins  
 Julia Robinson and Didier Tellier  
 James and Julie Rose  
 George Rosen and Barbara Gale  
 Melvin and Martha Rosenblatt  
 Ronald Ross and Mary Benham  
 Albert and Cynthia Roth  
 Dick and Olga Rothschild  
 Pauline Runkle and Robert Beurit  
 Robert Russell  
 James and Judith Ryan  
 Stephen and Janet Sacca  
 Russell Sandfield and  
 Sabine Ralston  
 William Sano  
 William Schulz and Beth Graham  
 Emily Schuparra  
 Meilseoir and  
 Zeruiah Schwartzthal  
 Robert and Ashley Scott  
 Claudine Scoville  
 Ruth Shane  
 Jerry and Cynthia Sharfstein  
 Bruce and Sandy Shaw  
 Wayne and Hazel Sheppard  
 Hatsy and William Shields  
 Dianne Shortall  
 George and Ellen Sibley  
 Katherine Sibley  
 Teresa Silverman  
 Joan Sindall and  
 MacGregor Freeman  
 Marilyn Slade  
 Russell and Rosamond Smith  
 Elizabeth Solomon and  
 Chad Konecky  
 Ellen Solomon and  
 Richard Wyndham  
 Bonnie Sontag  
 Rebecca Sorensen  
 Thomas and Caroline Spang  
 Barbara Sparks  
 Lee Spence  
 Newt and Judith Spurr  
 Mark and Janet Standley  
 Hoff and Lizel Stauffer  
 June Steel  
 Michael Stelluto  
 Jane Stempel  
 Robert Stern and Gail Howrigan

## THE CATALINA DAVIS SOCIETY



Members and friends of the Cape Ann Museum value it for many reasons, but all share a common goal; to sustain it for the long-term. Creating a legacy through planned giving is a way to make this tangible.

Catalina Davis (1854-1932) was one of the Cape Ann Museum's early and most ardent supporters. During the 1930s, funds bequeathed to the Museum from her estate allowed for the construction of a modern, fireproof building containing a large exhibition gallery (now the Cape Ann Gallery) and an auditorium. Her generosity also resulted in the addition to the permanent collection of two oil paintings by Fitz Henry Lane, numerous pieces of early New England furniture and an array of other historically important objects, books and artwork.

Most importantly, Catalina Davis' foresight resulted in the creation of the Museum's first endowment, which to this day continues to benefit the Museum.

Established in 2015, the Catalina Davis Legacy Society recognizes individuals who contribute to the future of the Cape Ann Museum through bequests, trusts and other planned and life income gifts. Membership is extended to all who have made an estate provision for the Museum, regardless of the amount.

Norma Andrews  
 J.J. and Jackie Bell  
 Lois Brynes and Serena Hilsinger  
 William and Ellen Cross  
 John and Lee Cunningham  
 Adele Ervin  
 Kristine Fisher and Richard Crangle  
 William and Rose Hausman  
 Thomas and Caroline Hovey  
 Milton and Helen Lauenstein  
 Stephen and Sigrid Lindo  
 Amy Moore  
 David Porper  
 Louis Rusitzky Marital Trust  
 Ann Stewart  
 Ted and Juanita Tumelaire

David Stirling and Fenton Nelson-Stirling  
 Jeff and Naomi Stenberg  
 William and Ellen Stone  
 Judith Strohm  
 Michael and Cheryl Sullivan  
 Neil and Mary Sullivan  
 Patricia and Francis Sullivan  
 Rebecca Sway  
 Karen Stone Talwar  
 Holly and Laura Tanguay  
 Mary Taylor and Harold Burnham  
 Joyce Thomas  
 Patrick Thomas  
 Peter Thurmond and Miffy Somers  
 Bruce and Pat Tobey  
 T.O.H.P. Burnham Library  
 Claire Tomlinson and Edward Garner  
 Susan Tournas  
 Meredith and Richard Turcotte  
 Janice and Bruce Turner  
 Peter and Louise Tysver  
 Peter and Kathleen Van Demark  
 Juni Van Dyke  
 Elaine Vogel  
 Clara Wainwright  
 Judith Walcott  
 Frederick and Martha Wales  
 Edward and Eva Walker  
 Meg Wallace and Sandy Anderson  
 James and Lea Watson  
 Karen and Peter Watson  
 Mary Weatherall and Miranda Updike  
 Jeffrey and Kathleen Weaver  
 Kenneth Weiss  
 Karen and Gretchen Werner  
 Bruce and Anne Whilton  
 Anthony and Joreen White

William Whitham and Ellen Lefferts  
 Bradford and Jenny Whitten  
 John Wilmerding  
 Alan and Charlotte Wilson  
 Jon Wilson and Sherry Streeter  
 David and Enid Wise  
 Oliver and Carolyn Wolcott  
 Susannah Wolfe  
 Pamela Wood  
 Bruce and Brenda Woodbury  
 Elliot and Janice Wyner  
 William Yates and Tamson Gardner  
 Suzanne Ziemer

**Up to \$100**

Jerry and Carol Ackerman  
 David Adams and Carol Mortimore  
 Jeremy and Kathleen Adams  
 Alane Airosus  
 Laura Alavosus  
 Pat Alderson  
 Deborah Aldrich  
 Jean Day Alexander  
 Marie Alfieri  
 Francis and Rebecca Aliberte  
 Catherine Allard  
 Meredith Allen and Jerry Cook  
 William Allison  
 Miriam Altman  
 Louise Ambler  
 Thomas Amend and Elizabeth Bish  
 Peter Anastas  
 Patricia Anders  
 Lois Andersen  
 George Anderson  
 Matthew and Cheryl Anderson  
 Eben and Sandy Andrew  
 Nancy Andrew

Willard and Linda Andrews  
 Alva Angle  
 Nan Araneo  
 Melinda Armistead  
 Eva Arnott  
 Elizabeth Auchincloss  
 James Austin  
 Alicia Ayer and Foster Thornton  
 Merribel Ayres  
 Isobel Baade  
 James and Kathy Bacsik  
 Peggy Badenhausen and Tom Kelly  
 Pamela Bailey and Thomas Joyce  
 Tom Balf and Donna Heaney  
 Mary Ballou  
 Catherine Barker-Ross  
 Phyllis Barrett  
 Henry and Liz Barron  
 Les Bartlett  
 Martin and Betsy Basch  
 Elisabeth Bayle and John Elliott  
 Ann Baylies  
 Peter and Janice Beacham  
 Kenneth and Helen Beal  
 Barbara Beauchamp and Susan Raymo  
 Nancy Beaumont  
 Mary Beck and Wilma Busse  
 Judy Bell  
 Jack Benedetto and Corinne Trabucco  
 John Berges and Ann Leamon Berges  
 Peter Bergholtz  
 Sam and Vivian Berman  
 Karen Berman-Mulligan  
 Kristie Bernard  
 Linda Berry  
 Anthony and Patricia Bertolino  
 Richard and Ellen Bianchini  
 Julia Bishop

Barbara Bjornson  
 Anita Blackaby  
 Jan David and Barbara Blais  
 John Blanding  
 Richard and Louise Blumenthal  
 Judith Bly  
 Caroline and Daniel Boardman  
 Hollis Bodman  
 Merribel Ayres  
 Elizabeth Bourguignon  
 Kent and Joan Bowker  
 Glenn and Jane Bowles  
 Barbara Boyce  
 Loring Bradley  
 John Bradley  
 Donald and Katherine Breen  
 Lise Breen  
 Barbara Brewer  
 Stephen Bridges  
 Jean Brinton-Jaecks  
 Susan Britt  
 Kathleen Broomer  
 Doug and Cassie Brown  
 Jane and Laura Brown  
 Jean Brown  
 Robin and Peter Brown  
 Fred and Stephanie Buck  
 Beth Buckingham  
 David Buckles and Andrea Milder  
 Carolyn Buckley  
 Betsy Bullock  
 Carol Bundy  
 Mary Burgarella  
 Kevin Burke  
 Jane Burke-Miller  
 Charles and Maria Burnham  
 Jan and John Burrus  
 Ann Byers  
 James and Charlene Callahan  
 Bruce and Ann Campbell  
 Marie Campello  
 Cynthia Capone



O'Maley Middle School students pose in the Courtyard; participants in a poetry workshop inspired by Charles Movall's paintings; performers at February's CAM Afterhours; Docents Sally Longnecker and Gail Anderson lead a weekly walking tour.

Douglas and Sarah Caraganis  
 Brian Carlson  
 Joe Carper and Sue McKittrick  
 Mary Carroll and Kathy Coelho  
 Kathleen Caruson  
 Louisa Casadei-Johnson  
 Arnold and Kathleen Casavant  
 Sherri and Patrick Casey  
 Deborah and Robert Cassidy  
 Vincent Castagnacci  
 Andrea Caswell  
 Carol Cataldo  
 Frances Caudill  
 Holly Cavanaugh  
 Robert Chadbourne  
 Lawrence Chakrin  
 Scott Channell  
 Sally Chapdelaine and  
 Steven Wood  
 Philip Chase and Karen Kenny  
 Michael and Jill Chipperini  
 Claudette Chmura  
 Melissa Ciucci  
 Andi Clark  
 Robert and Carroll Clark  
 Candace Cochran  
 Nathan Cohen and Eileen Little  
 Deb Colbert  
 Ruth Collier and Jay Davis  
 Robert and Sally Collini  
 Pat Collins  
 Elizabeth Colt  
 Frank and Judith Conahan  
 Stuart and Cynthia Conant  
 Lorna Condon  
 Susan Condon  
 Denis and Jeanne Conroy  
 William Conway  
 Linda Cook  
 Kathleen Corcoran  
 Vernon Cormier  
 Kathryn Costa

Rosemary Costello  
 Deborah Cowan  
 David Cox  
 Robert Coyne  
 Evelyn Craaybeek  
 Carol Craig  
 Lisa Craig  
 Robert and Ruth Crocker  
 Kathy Cross  
 Ruth Cross  
 Kim Crouse  
 Damon and Melissa Cummings  
 Megan Cummings  
 Pat Cummings  
 Joan Cummiskey  
 Lynn and John Cutter  
 Jennifer Dahlgren  
 Karen Dale  
 James and Patricia Dalpiaz  
 Susan Dalton and William Bazel  
 Susan Daly  
 Patricia Dardano  
 Carl and Mimi Darrow  
 Martha Davis  
 Barbara DeCoste  
 Charlene Delaney  
 Louis DeLena  
 Robert and Ann DeMaine  
 Anne Demeter  
 Virginia Dench  
 Mark Deveau  
 Phyllis Dickson  
 James and Fafa Diedrich  
 Genevieve Dionne  
 Carol Dirga  
 George and Claire Dix  
 Franklin and Frederica Doeringer  
 Margaret Donahue  
 David Donovan  
 Ariane Doud  
 Margaret Dougherty  
 Richard Douglas

Kathy Downer  
 Christine Downing  
 Barbara Drake  
 Patricia and Liza Dugan  
 Cynthia Dunn and Sandra Barry  
 J. P. and Andrea Dunn  
 Donna Dussault  
 Philip and Ann Dwight  
 Ruth Edmonds  
 Martha Elder  
 Deborah Eliason  
 Albert Ellis and  
 Anne-Seymour St. John  
 Thomas Ellis  
 Diane and Robert Emmons  
 Jackelyn Enslow  
 Carl Erikson  
 Sharon Erwin  
 Patricia Evans  
 Susan Everitt  
 Ron Farren and Kristal Pooler  
 Mark and Anne Feeley  
 Phyllis Feld  
 Jane Ferreira  
 Joseph Filippone and Laurel Rossi  
 Christian and Michelle Fisher  
 Kristine Fisher and  
 Richard Crangle  
 Frances Fitch  
 Richard and Caroline Fitzpatrick  
 Thomas Flaherty and  
 Elizabeth Lalik  
 Ellen Flatley  
 Mary Jo and Stephen Foley  
 Ken and Rachel Ford  
 Ann Foster  
 Gregg and Martha Fox  
 Bonnie Foz  
 Karl Frank  
 Robert and Joanne Frascella  
 Anita Freeman and  
 Phillip Albright

Judi Freeman and Tony Rudie  
 Nancy Frieden  
 Jack Gale  
 William and Bonnie Gale  
 Dorothy Ganick  
 Roger Garberg and Marion Sibley  
 Deborah Gardner  
 Frank and Janet Garrison  
 Susan Gaylord  
 Gerry and Eloise Gehr  
 Cornelia Gephart  
 Katherine German  
 Anthony and Marjorie Giannelli  
 Leonardo Gilardi  
 Mary Given  
 Tony and Samantha Goddess  
 Gretchen Golden  
 Curtis Gollrad and Dale Brown  
 Susan Goodall  
 Robert Goodman  
 Pamela and Barrett Goodspeed  
 Peter and Jan Goodwin  
 Jacques Gordon and  
 Elizabeth Wiltshire  
 Nate Gordon  
 Carmine and Joan Gorga  
 William and Pamela Gorman  
 Pattie and Jerry Goulart  
 Jane Graham-Dwyer  
 Margi Green  
 Marcia Greenbaum  
 David and Katherine Greenberg  
 Joyce Griffin  
 Gary Griffis and Leslie Pearlman  
 Frank Griswold  
 Gail Guittarr  
 Nancy Guselli  
 Elizabeth Habich  
 Sarah Ann Hackett  
 Caroline Haines  
 Jennifer Hale and James Sirois  
 Myra Hall



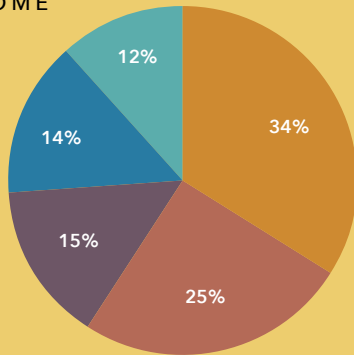
Erin Landry 2017

2017 FINANCIAL SUMMARY

Summary of Operating Revenue and Expense

*This is not a complete financial statement. A complete, audited financial statement is available upon request. Capital Campaign receipts and expenditures are not included in this summary.*

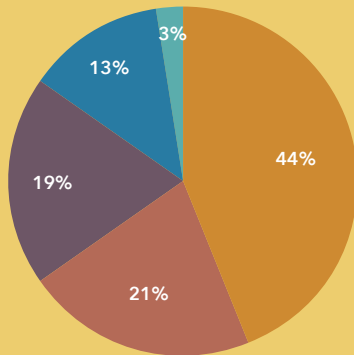
INCOME



- Donations \$629,972
- Membership and Admissions \$462,877
- Investment Income \$274,059
- Programs and Gift Shop \$264,928
- Grants and Bequests \$214,594

TOTAL INCOME \$ \$1,846,430

EXPENSES



- Payroll \$736,295
- Administration \$357,803
- Building Services \$322,959
- Programs and Gift Shop \$213,950
- Collections \$38,702

TOTAL EXPENSE \$1,669,709

- Laura Hallowell
- Isabella Halsted
- Lois Hamilton
- Benjamin Hansbury
- Marion Harding
- Molly Hardy
- Margaret Harney
- Andrew Harris and Katherine Culhane
- Buck Harris
- Carolyn Harris
- Sandra Harris
- Katrina Hart
- Lois Haslam
- Barta and Lee Hathaway
- John and Ruth Hautala
- Leslie Heffron
- Robert Heinman and Susan Field
- William and Joy Hennessey
- Rich Hersey
- Hazel Hewitt
- Jacqueline Hickey
- Sheila Higgins
- John Hinckley
- Brian and Kathleen Hines
- Margaret Hinrichs
- John Hintlian
- Deborah Hird
- Ana Hoel
- Susan Conant Holden
- Frank and Nancy Holt
- William and Lynn Holton
- Juliana and Peter Hood
- Lorraine Horn
- Luther and Betty Hosford
- Amy and Seamus Houlihan
- Laura Howard
- Stephen and Jeanne Howard
- Jay and Llewellyn Howland
- Eleanor Hoy
- Rosalie and John Hughes
- Jean and Victor Hurst
- Bette Hutchins
- Shelby Hypes
- Andrew Innes
- Edith Jacobs
- William and Margaret James
- Bobby Jenness
- Ray Jenness
- Charlotte Jennings
- Aaron Jerome
- Ann Johnson
- Anne Johnson
- Dianne and David Johnson
- James and Diane Johnson
- Mayo and Julie Johnson
- Wayne Johnson
- Earl and Suzy Kadiff
- Alan and Carol Kamin
- Marietta Kamin
- Ellen Kaminski
- Karla Kaneb
- Donna Katan
- Gavin Keenan
- Katherine Keith
- Jane Kelleher
- Barbara Kelley
- Richard and Randolph Kelts
- Fred and Lenore Kepler
- Michael and Fiona Kerr
- Marilyn Kimball
- Craig and Hannah Kimberley
- Elizabeth King
- Alan and Joan Kirk
- John Klein and Liese Elerin
- Lois Lehman Knaus
- Laurence and Annette Knight
- Victoria and James Knowlton
- Paula Knuuttunen
- Lee Kochler and Brian Ward
- Susan Kolwicz and Ken Parker
- Mary Jane Kornachi and Jack Silversin
- Lee Kowalski
- Thomas and Laura Kozachek
- Donna Kramich
- Norman Krause
- David Kriebel and Margaret Quinn
- James and Elizabeth Kubik
- Laszlo and Suzanne Kubinyi
- Vanessa Labbe
- Mark Lacey and Susan Fehrmann
- Robert Laford
- Mark Laliberte
- Pam Lally
- Barbara Lambert
- Gary Lambert
- Lynn Lane
- Maria Lane
- Sherrin Langelier
- Gerrit Lansing
- Donna Lardiere
- Karen Larsen and Ron Donnell
- Joseph and Karolina Latronica
- Linda Lavery
- Jennifer Lawrence
- Tamara Leaf
- Christopher and Kathryn Leahy
- Constance Leahy
- Greivin Lehman
- Lysa Leland
- Janet Lemnah
- Martha Lennon
- Richard Leonard
- Peter and Roxanna Leone
- Joyce Light
- Herman and Ann Lilja
- William Lillis
- Marilyn Lincoln
- Diane Lindquist
- Nathan and Susan Lipsett
- Marie-Noelle Little
- Barbara Littlefield
- Kathryn and George Lordan
- Margaretta Lovell
- Beverly Low
- Richard and Elizabeth Lowe
- Marianne Lufkin
- Robert Lukach
- Sheila Lummis
- Jonathan MacDonald
- J.D. MacEachern
- Anne MacLean
- Kenneth and Natalya MacWilliams
- Robert and Maryellen Magner
- Axel Magnuson and Sylvia Viresendorp
- Linda Mahajan
- Maureen Malloy
- Theodore Manning
- Charles Marcous
- Joseph Mari
- Tracy Mark
- Virginia Markell
- Adah Marker



Susan Marr  
 Yssabel Marren and Mark Andrew  
 Suzanne Marsh  
 Jeff Marshall and Phoebe Potts  
 Lee Marshall and Paul Goldberg  
 Debra Martell  
 Constance Mason  
 Katia and Bill Mason  
 Karen Matthews  
 Cheryl Mazer  
 Jean McCafferty  
 Clifford McCarthy  
 Danielle McCarthy  
 Patricia McCarthy  
 Seania McCarthy and  
 Dan Lampert  
 John McClellan  
 Diana McCloy and Mike Perrow  
 Mary McCollum  
 James and Pauline McCready  
 Kevin McDonough and  
 Susan Lillis  
 Juliana McGovern  
 Marianne McGowan and  
 Rick Scaramozza  
 Heidi McGrath  
 Ann McKay  
 Carol McKenna  
 Kathy McLearn and  
 Kevin Hutchinson  
 Shaun and Catherine McNiff  
 Jane Mead  
 Judythe Meagher  
 Thompson Mechem and  
 Elizabeth Spofford  
 Linda Medwid and  
 Marvin Kushnet  
 Michael and Heli Meltsner  
 Ruth Menicocci  
 Thomas and Jo-Ann Michalak  
 Mia Millefoglie  
 Margaret Mills-Michael  
 Patricia Mitchell  
 Dorothy and Ed Monnelly  
 Janet Montgomery  
 Frances Moon  
 Marlene Moore  
 Alicia and Peter Moore  
 James Moore and Richard Reidy  
 Joyce Moore  
 Veronica Morgan  
 Wendy Morgan  
 Mary Lou Morison  
 Diana Morse  
 Geoffrey and Barbara Movius  
 Kerry Mullen and Deb Hardy  
 Paula Mullendore  
 Christiane Munkholm and  
 Dan Bacon  
 Kris Munroe  
 Jan and Ed Murphy  
 Avis Murray  
 Richard and Elizabeth Murray  
 Monica Nardone  
 Scott Nason  
 George Neilson  
 Barbara Nelson

Andrew and Catherine Nickas  
 Stephen and Susan Niemi  
 Mary Sue Nienstedt-Santos  
 Paul Niski  
 Carol and Robert Noble  
 Joseph and Sinnika Nogelo  
 Sandra Northrup  
 Rachel Oberai-Soltz and  
 Arnold Soltz  
 Gail O'Docherty  
 Kerry O'Donnell and  
 Roy Campana  
 Michael O'Leary  
 Susan Oleksiw  
 Judith Oleson  
 Jim and Trudi Olivetti  
 Ann Olivo  
 Ann Olson  
 Margaret O'Malley  
 Peter and Charleen Onanian  
 Sally O'Neill  
 Linda Osburn  
 Paula O'Sullivan  
 Karen and Stephen Ouellette  
 Robin Paine  
 Don and Melissa Palladino  
 Bethe and Steven Palmer  
 Mary Palmstrom  
 Norma Parisi  
 Christy Park  
 Peter Parsons and Barbara Oliver  
 Sandra Pascal  
 Emily Passman and Franny Osman  
 Phyllis Paster  
 Joanne Paul  
 Mildred and Kenneth Paul  
 and Roxanne Slavich  
 Heidi Paulson and Robert Flaherty  
 Jane Paznik-Bondarin and  
 Andrew Kaelin  
 Martha Peabody  
 Martha Peer and Jamie Mayer  
 Roy Perkinson  
 James Perry  
 Robert and Susan Perry  
 Barbara Perryclear  
 Judith Peterson  
 Karin Peterson  
 Lorna Phillely  
 Sarah Picone  
 Christine Pitman  
 David Pleuler and Eileen Murphy  
 Joanne Ponte  
 Jeffrey Postel  
 William and Katherine Prater  
 Mary Alice Price  
 Esther Proctor  
 Mary Putonen  
 John Pydynkowski and  
 Diane Smith  
 Susan and Richard Quateman  
 Mary Rafferty  
 Christina Rafter  
 Robert and Susan Ranta  
 Nancy Rappa  
 Jon Rassler and Carol Kowalski  
 Janet Rattray and Barbara Buswell



Erin Landry 2017



Erin Landry 2017



Kristen Weiss of Historic New England following her presentation, *The Littles of Cogswell's Grant*; Art teacher Anne Pieterse and coach David Connerty celebrate the Beeman student exhibition in the Student Art Gallery; Cape Ann Improv entertains; Seeing friends at the Captain's Party.



Patricia and Joel Ray  
 Kinley and Bonnie Reddy  
 Andrew and Jessie Reid  
 Kelly Reynolds  
 Frederic and Patricia Rhineland  
 Nicole Richon-Schoel  
 Sheila Rider  
 Thomas Riggs  
 Karen Ristuben  
 Jessica Roberts  
 June Roberts  
 Lilian Roberts  
 Anne Rockwell and Jack Sweeney  
 Sandra Roedel  
 Jane Rollins  
 Wendy and John Root  
 Dale Rosen and Terry Segal  
 Sue Ann and Alan Rosenthal  
 Susan Ross  
 Nancy Rossi  
 Jon and Bonnie Rotenberg  
 Alison Rowell  
 Bradford Rowell  
 Edward and Susie Rowland  
 Carolyn Roy  
 Ellin Royds  
 James Royer  
 Kathleen and Donald Ruznecki  
 Robert and Patricia Ryan  
 Charles and Jane Rzepka  
 John Salisbury  
 Jeffrey and Christa Sammons  
 Dianne Sampson  
 Diane Sargent  
 Dawn and John Sarrouf  
 James and Mary Saunders  
 Mary Jane and William Sawyer  
 Tom Schaefer  
 Naomi Schalit and John Christie

Betty Lou Schlemm  
 Thomas Schmidt  
 Deb and Peter Schradieck  
 Grace Schrafft  
 Judith L. Schroeter  
 Stephen Schultz and  
 Jennifer Sinclair  
 Jessica Schwarzenbach and  
 Paul Hackett  
 Claudia Schweitzer and  
 Brent Davison  
 Sally Seamans  
 Martha Seavey  
 John and Marcia Seward  
 Beverly Shafer  
 Judith and Stanley Shapiro  
 Steven and Eileen Shapiro  
 Dona Shea  
 James Shea  
 Edward and Kaye Lynn Shoucair  
 Annie Shreffler  
 Charles Shurcliff  
 Julie Sidon  
 Marcia Siegel  
 Dorothy Sieradski  
 Ed and Barb Silberman  
 Deborah Simmerman  
 Lois Simmonds  
 Shirlie Slater and Sara Zink  
 Tracy Slater  
 Leigh Slingluff  
 Isabel Sloane  
 Sally Smithwick and Bruce Novak  
 Andrew Soll  
 Joseph and Helen Soussou  
 JoAnn Souza  
 Katie St. John  
 Danuta Stachiewicz  
 Elaine Starrett

Muriel Lee Steele  
 Vivienne Steinbock and  
 Michael Mendelsohn  
 Charles Steiner  
 Anne Sterling  
 Paul Stetzer  
 Laura Stevens  
 Laurell Stevens  
 Ann Stewart  
 Evelyn Stewart  
 Charmaine Stickney  
 Lois Stillman  
 Margaret Stocker  
 Mark Stolle  
 Betty Stone  
 Stanley Stone  
 Heidi Stowe  
 Pamela Stratton and Kathryn Tuck  
 Patrick and Dolores Sudbay  
 Bernice Svedlow  
 Marie Sweeney  
 Larry and Marilyn Swift  
 Marie Swinson  
 Paul Sylva and Christine Becker  
 Paulett Taggart  
 Frederick Tarr  
 Jeff and Ruth Taylor  
 William Taylor  
 Linda Teahen  
 Susan Teel  
 Mary Thielscher  
 Lori Thorstensen  
 Kim Tieger  
 Don and Maren Tirabassi  
 Maria Touet  
 David Tower and Robin Hoffman  
 Terese Trapani  
 Edmund Traverso  
 Keith and Janet Trefry

Paul and Maureen Trefry  
 Maureen Tripp  
 Felicia Trupiano  
 Horace Turner  
 George and Suzanna Ulrich  
 William Vachon  
 Constance Vallis  
 Martha VanKoevering  
 Laura and Frank Ventimiglia  
 Richard and Beverly Verrengia  
 Robert and Jane Viator  
 Regina Villa  
 Conrad Vitale  
 Charles and Elaine Von Bruns  
 Dorothy Von Roseninge  
 Hazel Von Roseninge  
 Theodore and  
 Linda Von Roseninge  
 Ralph and Ana Waddey  
 Maura Wadlinger  
 Anne and Jon Waisnor  
 Sage and Linda Walcott  
 Susan Walker  
 Alan and Sarah Ward  
 Anne DeSouza Ward and  
 James Ward  
 Lynne Warren-Szostek and  
 Daniel Szostek  
 Serena Watson  
 Deborah Way  
 Suellen Wedmore  
 Norman and Ruth Weeks  
 Mary Weissblum  
 Richard and Rosemary Weissman  
 Francis and Lindsay Weld  
 Paul Wels  
 Inga Wennik  
 John Westerberg  
 Anne White



Jim Hooper's *Portraits of a Working Waterfront* continue to engage; Visitors take in Susay Gaylord's calligraphic installation at the White-Ellery House in June; A young artist working in watercolors at a flower painting workshop led by artist Marion Hall; Kathleen Adams leads an organ crawl as part of the *Voicing the Woods* exhibition; At the opening reception of *Rock Bound: Painting the American Scene on Cape Ann and Along the Shore*.

William and Deborah Whiting  
 Terri Whitney  
 Alice Whittaker  
 Amy and Michael Wiklund  
 Dan Wilcox  
 Phil Wilde  
 Kathleen Williams  
 Susan Willis  
 Margaret Willmann  
 George and Penny Wingate  
 Nancy Winslow  
 Andrew and Mary Wittkower  
 Robert and Emily Wolfe  
 Ellen Wolff  
 Jane Woolway  
 Jim and June Wulff  
 Barbara Younger  
 Larry and Hope Zabar  
 Christine Zampell  
 Heidi Zander  
 Norton and Freyda Zieff

**In Honor of**

J.J. and Jackie Bell  
 Morgan Bell  
 Judith Bly  
 Debra Martell  
 Stephanie Buck  
 Rebecca Sway  
 Linzee and Beth Coolidge  
 J.J. and Jackie Bell  
 Robert Chandler and  
 Ronda Faloon  
 William and Ellen Cross

Mary Craven  
 George Langer and Karen Wise  
 Thomas Hovey  
 William Hovey  
 Grace Murray  
 Dianne Sampson  
 Michael Wheeler  
 John Lynch

**In Memory of**

Philip Beal  
 Robert and Barbara Brown  
 Minot Frye  
 Robert and Barbara Brown  
 Gordon Goetemann  
 Mark Goetemann  
 Tamara Greeman  
 Ronald Ross and Mary Benham  
 Tom Halsted  
 John and Lenice Allen  
 J.J. and Jackie Bell  
 Selma and Leslie Bell  
 Robert Chandler and  
 Ronda Faloon  
 Charlotte and Larry Eliot  
 Mark and Anne Feeley  
 Stephen Hall  
 Joy Halsted  
 David and Michele Harrison  
 Michael Lafferty  
 The Law Office of Meredith Fine  
 Sophia Martz

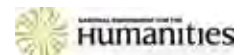
John Moran  
 Dan and Beth Morris  
 Lee Kingman Natti  
 Brooke Neer  
 Elaine Ohlson  
 Philip and Linda Osborne  
 Dale and Leslie Pope  
 Stephen and Kit Rosenthal  
 Arthur Ryan  
 Hazel Von Rosenvinge

Paul Littlefield  
 Robert Chandler and  
 Ronda Faloon  
 Arthur Ryan

John Schoenbaum  
 Blue Cross Blue Shield  
 Michael and Caroline Brogan  
 Karen Dale  
 David and Barbara Dunfee  
 Jacqueline George  
 Allen and Fran Maltz  
 Jay McQuaide  
 Marlene Moone  
 Janice and Martha Orlich  
 Mildred and Kenneth Paul and  
 Roxanne Slavich  
 Kathy Restuccia  
 Larry and Hope Zabar

**In Kind Donations**

A1 Maintenance & Carpet, Inc.  
 Argos Photography  
 Hope Bachelder  
 Stephen and Jill Bell  
 Dave Browning  
 Bonnie Covington  
 Pat Cronin  
 Jerry Enos Painting, Inc.  
 Nina Goodick  
 Landry & Arcari Rugs  
 and Carpeting  
 Lark Fine Foods  
 Warren and Jean Little  
 Christine and Paul Lundberg  
 Steve Rosenthal  
 Catherine Ryan  
 Lorraine Schulte  
 Shelagh Schylling  
 Jane-Seymour St.John  
 Kim Smith  
 Bonnie Sontag



# CAPE ANN MUSEUM

ART HISTORY CULTURE

27 PLEASANT STREET GLOUCESTER MA 01930

NONPROFIT  
ORGANIZATION  
U.S. POSTAGE  
PAID  
GLOUCESTER  
MA 01930  
PERMIT NO. 254

## MUSEUM INFORMATION

**HOURS** The Museum is open Tuesday through Saturday, 10:00 a.m. to 5:00 p.m. and Sunday, 1:00 p.m. to 4:00 p.m. Closed Mondays and major holidays. The Library & Archives are open Wednesday through Saturday, 10:00 a.m. to 1:00 p.m. or by appointment.

**ADMISSION** Adults \$12; Seniors, students, Cape Ann residents \$10; Youth (18 and under) and Museum members are free.

**TOURS** Guided tours offered Tuesday through Saturday at 11:00 a.m. and 2:00 p.m.; Sunday at 2:00 p.m. For group tours call (978)283-0455 x12.

**ACCESS** The Museum is committed to accessibility for all visitors.

**MEMBERSHIP** The Museum is supported by donations and annual memberships. Call (978)283-0455 x35 for membership information.

**FOLLOW ALONG** [facebook.com/camuseum](https://facebook.com/camuseum) [twitter.com/capeannmuseum](https://twitter.com/capeannmuseum) [instagram/capeannmuseum](https://instagram.com/capeannmuseum)

**DON'T MISS OUT!** Sign up for CAM's weekly e-blast at [capeannmuseum.org/eblast](https://capeannmuseum.org/eblast).