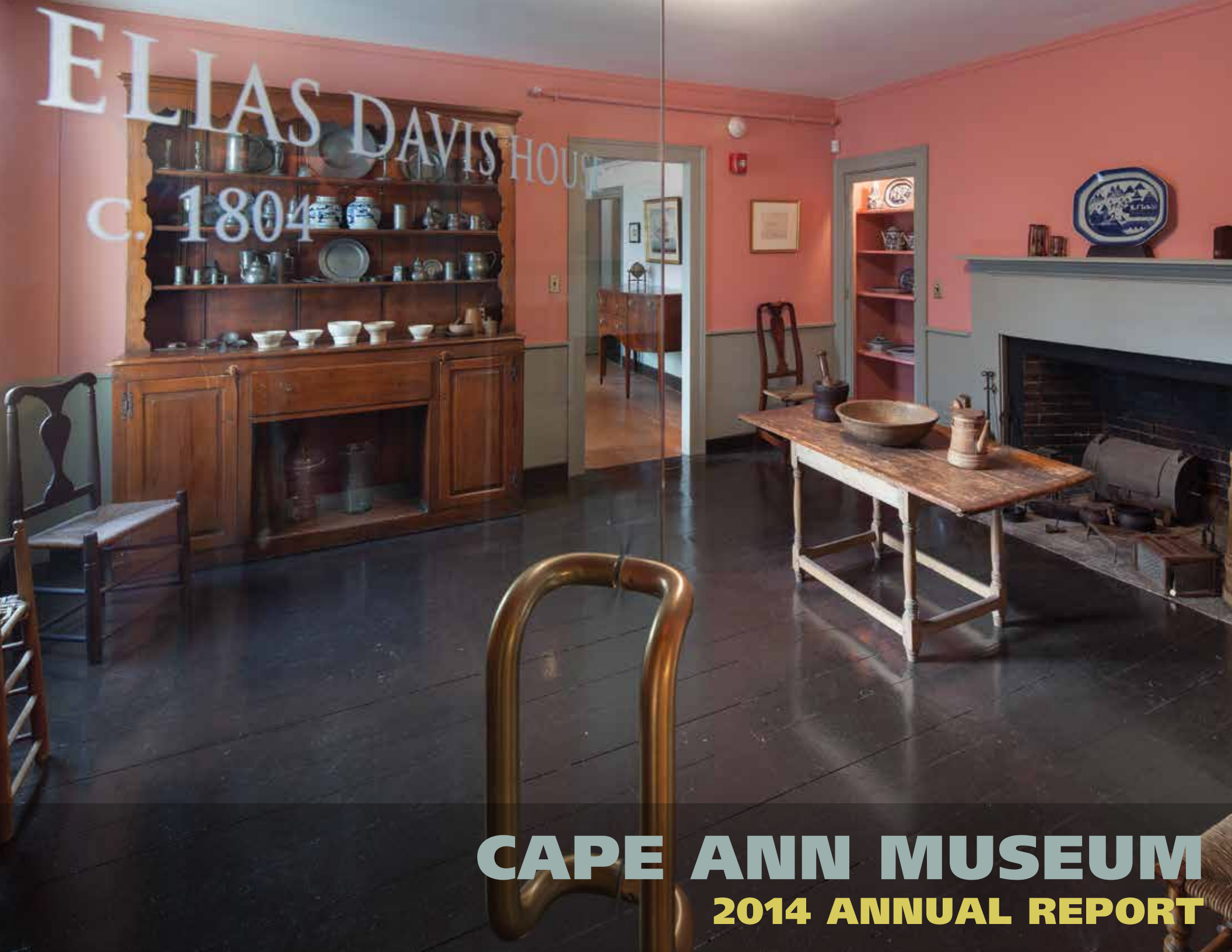


ELIAS DAVIS HOUSE
c. 1804



CAPE ANN MUSEUM
2014 ANNUAL REPORT

OUR MISSION

- To foster an appreciation of the quality and diversity of life on Cape Ann, past and present;
 - To further the knowledge and enjoyment of Cape Ann history and art;
 - To collect and preserve significant information and artifacts; and,
 - To encourage community involvement in our programs and holdings.
- In all our activities, the Museum emphasizes the highest standards of quality.



(above) View of the Museum from the park; (cover) Captain Elias Davis House, 1804, newly renovated kitchen. Photographs courtesy of Steve Rosenthal ©2014.

CAPE ANN MUSEUM

ART HISTORY CULTURE

27 PLEASANT STREET GLOUCESTER MA 01930



F. Kimball Rogers (1854–1930). Balloon View—Cape Ann to Boston [detail], 1879, Boston. Lithograph on paper. J. H. Daniels (1828–1901), publisher. THACHERS

Dear Friends,

2014 was a year in two parts. "During the renovation" was an active and stimulating period but largely invisible to the public. "After the renovation" was an exuberant and celebratory time shared with members, friends, our communities and visitors. Our activities closely reflected each situation.

DURING THE RENOVATION

- The Education Department planned offsite programming which brought the Cape Ann Museum into the schools and into new communities. We strengthened our relationships with host institutions.
- Members of the Board and staff were intimately involved with the construction project and with the redesign of the galleries; making decisions, big and small.
- Fresh scholarship and conservation of the collection in preparation for its reinstallation kept the curatorial department and the library/archives staff busy.
- Moving the entire collection and staff (for a second time!) required many hands.
- Creativity (and good humor) was challenged as we reinstalled every public and private space in the Museum.
- Special tours of the project introduced new people to the Museum and solidified relationships with those already engaged.
- The Development Department and Capital Campaign Steering Committee focused on securing support for the renovation project and thanking the many generous donors who made it possible.

AFTER THE RENOVATION

- We enjoyed a memorable reopening week and a warm reception from members and friends.
- More than 400 proud supporters attended the Opening Gala.
- From the *New York Times* to Chronicle, the renovation and reopening received amazing press.
- The new permanent installations of the Fresnel lens, the Folly Cove Designers and *Strong Breezes, Passing Clouds* by Diane KW impressed visitors.
- The Museum shop received rave reviews.
- The fall opening reception for *Portraits of a Working Waterfront: Photographs by Jim Hooper* was a moving event.
- Recent additions to the collection, including the gift of the painting *Phantom of Boston* and additional archival materials from the estate of granite historian Barbara Erkkila have strengthened the Museum's holdings.
- The publication of two exhibition catalogs supports and reflects our emphasis on scholarship.
- 12,112 visitors walked through our newly reopened doors from August through December of 2014.
- Surpassing the \$5M mark in the Capital Campaign is a credit to all.
- Fostering connections with our communities and an increasingly loyal membership remains an ongoing commitment.

Heading into our first full year of operation since the renovation, we continue to think about keeping members engaged, staying relevant to our communities, caring for our collection, remaining financially stable and fulfilling our goal to be one of the best small museums in the country. The Board is putting the pieces in place to begin the next strategic planning process. It's critical to keep looking forward, but it is also a time to be grateful, to take pride in our accomplishments and to enjoy it all.

With sincere thanks,

Ronda Faloon
Director

John Cunningham
President

John Cunningham, *President*

J.J. Bell, *Vice President*

David Porper, *Clerk*

Arthur Ryan, *Treasurer*

Robert Bachelder	William James
Kermit Birchfield	Paul Littlefield
Herbert Collins	William Lynch
Bonnie Covington	Amy Moore
William Cross	Stevie Neal
Stephanie Gaskins	Ronald Nickerson
Henrietta Gates	Lisa Rich
Samuel Holdsworth	Hinda Simon
Thomas Hovey	Richard Tadler

2014 STAFF

Administration

Ronda Faloon, *Executive Director*

Jeanette Smith, *Administrator**

Cara White, *Administrative Assistant*

Curatorial

Martha Oaks, *Curator*

Leon Doucette, *Curatorial Assistant*

Erik Ronnberg, *Adjunct Maritime Curator*

Development

Gerry Herbert, *Director of Development*

Amy Fanning, *Development Coordinator*

Meredith Anderson, *Media and Communications Coordinator*

Education and Programs

Courtney Richardson, *Director of Education and Public Programs*

Elizabeth Browning, *Education Assistant*

Facilities

Walter Chianciola, *Facilities Manager*

Jude Seminara, *Security*

Research

Stephanie Buck, *Librarian/Archivist*

Fred Buck, *Photo Archivist*

Linda Johnson, *Librarian Assistant*

Special Projects

Melissa Geisler Trafton, *FHL Online Senior Researcher*

Alison Anholt-White, *FHL Online Researcher*

Visitor Services

Victoria Petway, *Visitor Services*

Dianne Sampson, *Reception*

*Jeanette Smith retired in December of 2014. Sheila Hruby was hired in December as the new Administrator.

Committee and Board Members all serve in a volunteer capacity, greatly enhancing the Museum's ability to meet its mission.

BUILDING COMMITTEE

J.J. Bell, *Chair*
Robert Chandler
Herbert Collins
Pearce Coues
John Cunningham
Stephanie Gaskins
Sam Holdsworth
Ron Nickerson
R. David Porper
Arthur Ryan

COLLECTIONS COMMITTEE

Kermit Birchfield, *Chair*
Elizabeth Clement
John Cunningham
Henrietta Gates
Sam Holdsworth
Daniel McDougall
John McGlennon
Ingrid Swanson
John Rando
Arthur Ryan
Ed Touchette
William Traves

**Library & Archives
(sub-committee)**

David Rich
Arthur Ryan
Ingrid Swanson
Ed Touchette

DEVELOPMENT COMMITTEE

Tom Hovey, *Chair*
Jackie Bell
Hope Bachelder
John Cunningham
William Lynch
Jenifer McDougall
Amy Moore
Stevie Neal
Hinda Simon

EDUCATION COMMITTEE

Stephanie Gaskins, *Chair*
Jeff Carovillano
John Cunningham
Dawn Dexter
Susan Erony
Tom Hovey
John Huss
Leslie Hammond
Ed Touchette
Lisa Rich

EXECUTIVE COMMITTEE

John Cunningham, *Chair*
J.J. Bell
Tom Hovey
Arthur Ryan

FINANCE COMMITTEE

Arthur Ryan, *Chair*
John Cunningham
Paul Littlefield
Richard Tadler

Audit (subcommittee)

Paul Littlefield
Richard Tadler

NOMINATING COMMITTEE

J.J. Bell, *Chair*
John Cunningham
William James
Lisa Rich

**AD HOC GOVERNANCE
COMMITTEE**

Stevie Neal, *Co-Chair*
Hinda Simon, *Co-Chair*
William Cross
John Cunningham
Sam Holdsworth
Stephanie Gaskins

COLLECTIONS

The Cape Ann Museum thanks the individuals and/or their estates whose generous donations have enriched the Museum's collections over the course of the year.

FINE AND DECORATIVE ARTS

Gift of the artist: Two hundred and twenty-two large scale portrait photographs, printed on Hahnemuhle Photo Rag 308 GSM, 2004–2008, by Robert Amory.

Gift of Robert Amory: *Untitled*, 2000, mixed media on paper by Dawn Southworth; *Ocean Eyes*, 2009, mixed media on canvas by Susan Erony.

Gift of the artist: *Chapters on a Quarry Wall, I* (2003), archival inkjet print by Leslie D. Bartlett.

Gift of Kermit and Glenys Birchfield: *Shoveling Salt*, 1917, etching on paper by Emily Burling Waite (1887–1980).

Gift of the Estate of Dorothy A. Brown: *Sinbad* and *Eliza Gentry Young*, 1914 and 1913, oils on canvas by

Harriet Addams (Young) Brown; *Sarah Fraser*, 1913, oil on canvas by Charles Hopkinson (1869–1962) in a frame made by Charles Prendergast (1863–1948); *Bonaparte Gulls*, 1979, bronze by Beverly Benson Seamans (1928–2012).

Gift of the artist: *Hauling Back; Mending the Net II; Taking Out; Setting Out; In for the Fiesta* (oils on canvas), and *Lumpers/Washing the Fish Hole* (ink and watercolor on paper) by Paul Ciaramitaro.

Gift of Peter Corbino: *The Vigilantes*, 1936, oil on canvas by Jon Corbino (1905–1964).

Gift of Chandler Davis: *Autumn, Bass Rocks*, 1883, oil on canvas by D. Jerome Elwell (1847–1912); *Ship Panay of Salem and The Kearsarge*, both c. 1890s, photographs by Martha Hale Harvey (1862–1949).

Gift of the artist: *Un-friend*, 2012, two color woodcut prints from a single block by Haig Demarjian.

Gift of Deane Hancock French: Wooden leg-shaped lath armature used during the bronze casting of Walker Hancock's (1901–1998) *Flight Memorial* installed at the U.S. Military Academy at West Point, NY.

Gift of Myra Hall: *Still Life with Red Stripe*, undated, oil on canvas by Zygmund Jankowski (1925–2009).

Gift of Rose and Bill Hausman: *Portugee Hill*, 1990, monotype print on paper by Joseph Solman (1909–2008).

Jon Corbino (1905–1964), *The Vigilantes*, 1936, oil on canvas. Gift of Peter Corbino, 2014.



Gift of the artist: *Portraits of a Working Waterfront*, 71 photographs, 2013, archival inkjet prints by Jim Hooper.

Gift of Jaqueline Jameison: *Portrait of Finson Wheeler (1790–1876)*, c.1840s, oil on canvas by an unattributed artist; *Portrait of Solomon T. Trumbull (1834–1903)*, 1908, oil on canvas by S. Henry Richert (1880–1973).

Gift of William and Janet James: *Seascape with Straitsmouth Island*, undated, oil on canvas by Parker Perkins (1862–1942).

Gift of Suzanne O'Hara Kadiff: *Fish and Two Fishermen*, 1953, watercolor on paper; *Fiesta*, 1954, watercolor on paper; *Cape Ann Festival of the Arts Poster*, 1952, linoleum block print on cardboard by Tom O'Hara (1920–1981).



Paul Ciaramitaro, *Mending the Net II*, oil on canvas. Gift of the artist, 2014.

Gift of Joan Klimann: *Phantom of Boston*, undated, unattributed, oil on panel, given in memory of her husband, Gustav D. Klimann.

Gift of the artist: *Strong Breezes and Passing Clouds*, 2014, an installation of "decaled" ceramic shards and plates, by Diane KW.

Gift of the artists: *A Hole in One*, 2009, stoneware, made by Diane KW and Joel Park.

Gift of Jane Lewis: *Monkey*, c.1940s and *Crane III*, c. late 1960s, both carved mahogany by James T. McClellan (1910–2005).

Diane KW and Joel Park, *A Hole in One*, 2009, stoneware. Gift of the artists, 2014.

Gift of Nancy Marculewicz: *Landscape with Clouds*, 1980s, oil on canvas by Norma Cuneo.

Gift of the artist: *Gloucester Waterfront*, 1970s–early 1980s, block print; four sketches of Gloucester Harbor, 1970s–early 1980s, watercolors on paper; *Flounder*, 1990s, block print; *Blue Fish*, 1990s, block print by Nancy Marculewicz.

Gift of the artist: *Quarry Triptych*, 2013–2014, in three panels, oil on board by Michael McKinnell.

Gift of the Estate of Anna Crouse Murch: *Russel Crouse*, 1951, bronze by Walker Hancock (1901–1998).

Gift of Rae Stempel: *Fragment—David Searching*, 1974, mixed media on masonite by Umberto Romano (1905–1984).

Gift of Roswitha and William Traves: *The Artist in a Time Symbol*, 1958, oil on paper by De Hirsh Margules (1899–1965).

Gift of Roswitha and William Traves: *Bust of Chief Justice Warren E. Burger*, 1983, bronze by Walker Hancock (1901–1998).

In preparation for reinstallation of the galleries following renovations, the Museum had conservation work done on a number of items in its holdings. Many of the objects have been part of the permanent collection for generations and are amongst the most historically important artifacts in our possession.

- Stabilization of the original gold leaf frame on Gilbert Stuart's (1755–1828) 1815 oil on canvas *Portrait of Russell Sturgis*.
- Polishing and waxing of five pieces of silver once used in Gloucester's First Parish (Unitarian) Church on Middle Street. Four of the pieces were made by Colonial silversmith Paul Revere.
- Stabilization and reframing of Fitz Henry Lane's 1859 oil on canvas *Kettle Island, Manchester*, donated to the Museum in 1949 by Samuel H. Mansfield.
- Reassembly of the original 1760 slate tombstone of the Reverend John White which, after being vandalized, was removed from the Bridge Street Burial Ground in 1959 by poet Charles Olson and brought to the Museum for safekeeping.
- Final stabilization of the first order Fresnel lens from Thachers Island and reuniting of the lens and its original base in a permanent installation within the Museum. This project was done with the support of the City of Gloucester's and the Town of Rockport's Community Preservation Act grant programs.
- Stabilization of a mahogany desk used in a recruitment office in Gloucester during the Civil War. This work was generously undertaken by Jay McLaughlan.
- Cleaning of the wood and fiberglass seabird which hangs in the Museum's third floor exhibition gallery. This work was generously undertaken by Brad Story who created the bird.
- Cleaning, reconfiguration and reinstallation of the Gloucester Harbor waterfront diorama originally made for the 1893 Columbian Exposition. Model maker Erik Ronnberg did this work.
- Deacidification, matting and framing of 25 Gloucester drawings by Stuart Davis (1892–1964).
- Deacidification, matting and framing of the Gloucester page from John Warner Barber's *History of Massachusetts Towns* published in 1839. This project was generously funded by Andrew Spindler.





Gift of the artist: *Quarry Triptych*, 2013–2014, in three panels, oil on board by Michael McKinnell.

Gift of Pam Washington: *View of Gloucester Harbor from Rocky Neck*, ink wash on paper; *Untitled (Betty)*, ink and watercolor on paper; *Untitled* (miniature of a ship), ink and watercolor on paper; *Untitled* (miniature of berries), ink and watercolor on paper, all pieces c. 1950s by Tom O'Hara (1920–1981).

Gift of Michael Wheeler: *Holiday*, mid-1930s, oil on canvas by Erma Wheeler (1915–2005).

Bequest of H. Wade White: *At Johnson's Pit*, undated watercolor on paper by Prentiss Taylor (1907–1991); *My Gloucester*, undated lithograph by Vera Andrus (1896–1979).

FISHERIES AND MARITIME ARTIFACTS

Gift of James and Katherine Groves: An etched copper plate used to print packaging for Davis Bros. Atlantic Ocean Mackerel, early-mid 20th century.

FOLLY COVE DESIGNER ARTIFACTS

Gift of Rose-Marie Glen: A collection of Folly Cove Designers material consisting of a skirt, cocktail napkin, placemats, runners, table cloths (featuring various designs by Aino Clarke, Elizabeth Holloran, Louise T. Kenyon, Mary Ann Lash, Eino Natti and Peggy Norton), as well as a 1945 issue of *Life* magazine featuring the Folly Cove Designers and pages

taken from a 2010 issue of *New England Home* concerning the FCD as well.

Gift of Jane Lewis: Four mats with Eino Natti's *Golden Pheasants* design, and two mats with Virginia Lee Burton Demetrios' *Spring Lambs* design.

Gift of Elizabeth Wallenius: A collection of Folly Cove Designers clothing consisting of two skirts, a blouse and one dress, printed with Mary Wallenius' (1914–1992) *Calico Cats* and *Morning Glory* designs.

MUSEUM PURCHASES

The Gloucester page from John Warner Barber's *History of Massachusetts Towns* published by Dorr, Howland & Co. of Worcester in 1839.

A collection of ceramic tableware printed with Folly Cove Designer Eino Natti's 1950 designer *Roosters and Sunflowers*. The dinnerware was made by the Edwin M. Knowles China Company.

Floyd Morris (Floyd the Clammer), 2014, pencil on paper by James Oliver, made possible by the generosity of Arthur Ryan.

The Ship is Ready, 1833, lithographed sheet music, published by Pendleton's Lithography, cover art attributed to Fitz Henry Lane (1804–1865).

The Mammoth Cod Quick Step, 1839, lithographed sheet music, published by T. Moore's Lithography, cover art unattributed.

GIFTS TO THE LIBRARY & ARCHIVES

Gift of Ammiel Alcalay: *Lost and Found* catalog and 8 booklets, 2013.

Gift of Ray Agler: Three photographs of Margaret Fitzhugh Brown, 1927 and 1928.

Gift of J.J. Bell: *John Raimondi: Sculptor*, S. Hunter and W. Corbett, 1999.

Gift of Kermit Birchfield: *Edward Hopper: A Catalogue Raisonné*, 4 Vols., 1995.

Gift of Elaine and Ronald Bleau-Richards: *Harper's New Monthly Magazine*, September 1875.

Gift of Jane D. Bowles: Three postcards.

Gift of Fred Buck: 187 postcards of Cape Ann.

Gift of Alan Bull: *Twelve Old Trucks for the New Year*, 2014 calendar.

Gift of Joseph T. Chetwynd: Scrapbook of Giles M.S. Todd; 1938 Fishermen's Race Program.

Gift of David Cox: *North Shore Breeze*, February 1923; Preamble and Resolutions of the Gloucester Master Mariners Association, 1888; Advertising material for the Traffic Sign & Signal Co., Gloucester, 1919.

Gift of Danforth Art Museum: *Reed Kay: Mark of Truth*, 2014.

Gift of Captain Victor Delano: *Portrait of Murdock Pemberton*, Sally Pemberton, 2011.

Gift of Dawn Dexter: Newspaper clippings, 1889, 1899; Sketches and specs of a half-through plate girder bridge by H.C. Dexter; Photo, 1919 GHS Football team.

Gift of Robert Drew: *Impressionist Jewels: the paintings of Martha Walter: A Retrospective*, 2002.

Gift of Sarah Dunlap: *Joseph Giunta: Art as Alchemy*, Françoise le Gris, 2014.

Gift of John W. and Kathleen L. Erkkila: Estate of Barbara Erkkila, research material.

Gift of David Fay: *The First 100 Years, 1916–2013: From the North Shore Swimming Pool to the Manchester Bath & Tennis Club*, D. Fay, 2014.

Gift of Gloucester Woman's Club: Photographs of club members.

Gift of Thomas A. Hale: 210 negatives of family and Annisquam, 1915 and 1916.

Gift of Rosemary Hall: *Grandma Hall's Diary*, Rosemary Hall, undated.

Gift of Tom Hovey: *Lloyds Register of American Yachts*, 1950 and 1952.

Gift of Carolyn Lawson: Photo of a house on Wingaersheek Beach, c. 1900.

Gift of Leominster Historical Society: Blueprint of fireworks display for Improved Order of Red Men.

Gift of Gail Levin, ed.: *Theresa Bernstein: A Century in Art*, 2013.

Gift of Mark Linehan: *A Survey of Gloucester*, Janice Rowley, 1947 college paper.

Gift of Margaret Magoon: Papers of Ebenezer A. Brazier.

Gift of Mary McCarl: *Fifty Years of American Printmaking*, 1910–1960, Associated American Artists, 1988; *The Constitution of the United States of America, as amended*, 2000; *Murder in Pigeon Cove*, Gunilla Caulfield, 2011, signed by author; *Migration and the Origins of the English Atlantic World*, Alison Games, 1999; *Disowning Slavery: Gradual Emancipation and "Race" in New England, 1780–1860*, Joanne P. Melish, 1998; *The American Counter Revolution: A Retreat from Liberty, 1783–1800*, Larry E. Tise; *Pre-1841 Census and Population Listings in the British Isles*, Colin R. Chapman, 1994; *Tracing Your British Ancestors*, Colin R. Chapman, 1993; *Genealogical Dates: A User-Friendly Guide*, Kenneth L. Smith, 1994; *The Liberty We Seek*, J. Potter, 1983; *A Battlefield Atlas of the American Revolution*, C.L. Symonds, 2006; *In Hope of Liberty*, J.O. & L.E. Horton, 1997; *Plants and People*, P. Benes, ed., 1995; *Re-*

deeming the Time, P. Smith, 1987; *A People's Army*, F. Anderson, 1984; *Massachusetts Officers and Soldiers, 1723–1743*, M.O. Stachiw, ed., 1979; *Wallpapers in Historical Preservation*, Catherine L. Frangiamore, 1977; *Saving Italy: The Race to Rescue a Nation's Treasures from the Nazis*. Robert M. Edsel, 2013.

Gift of McCormick Gallery: *Samuel Feinstein: Paintings from the Fifties*, 2014.

Gift of Dan McDougall: *Pacific Patrol*, Marion L. Shinn, 1993.

Gift of Priscilla L. and Bethe L. Moulton: *Molly Waldo*, Priscilla L. and Bethe L. Moulton, 2013.

Gift of Martha Oaks: *Christmas in Rockport*, Eileen M. Ford, 1997.

Gift of Peachtree Publishing: *Chasing the Nightbird*, Krista Russell 2011.

Gift of Peninsula Press: Reprint of *In Great Waters: The Story of the Portuguese Fishermen*, Jeremiah Diggins, 2014.

Gift of Howard L. Resnikoff: Print of *The Pickering* at Diego Garcia rescuing the crew and passengers of the Dutch warship *Admiral Evertsen*, 1819.

Gift of Sophia Richman: *Mended by the Muse*, Sophia Richman, 2014.

Gift of Rosemary Ristino: Framed Collins School graduation diploma for Jennie Ciarametaro, 1922.

Gift of Bob Ritchie, Dog Town Books: *Four Quartets*, T.S. Eliot, 1971.

Gift of Erik Ronnberg, Jr.: Unknown blacksmith's account book., 1833–1834; The Georges Bank Fishing Schooner *M.S. Ayer*, Erik Ronnberg, Jr., 2004.

Gift of Martha Stone: *Sea Sprung*, Vincent Ferrini, 1949, signed by author.

Gift of William Traves: *Basking with Humpbacks*, Todd McLeish, 2009; Nine Union



Rockport Granite Company workers on strike, 1899. Photo by Louis A. Rogers, Rockport Granite Co. treasurer. From the Estate of Barbara Erkkila, 2014.

Hill theater programs from 1927 and 1928; George Walker map of the City of Gloucester, 1891.

Gift of Roger Choate Wonson: Daguerreotype of the Wonson Twins, c. 1854.

LIBRARY & ARCHIVES PURCHASES

Receipt book for codfish allowances, 1795–1796, made possible through the generosity of William and Janet James and Russell Sandfield.

Letters from China: The Canton–Boston Correspondence of Robert Bennet Forbes, 1838–1840, Robert Bennet Forbes, 1996, reprint.

Personal Reminiscences (1882), Robert Bennet Forbes, 1882, facsimile copy, 2003.

Shipwreck: Winslow Homer and The Life Line, Kathleen A. Foster, Philadelphia Museum of Art, 2012.

Merchant Vessels of the United States, 1926.

Rockport Granite Co. cancelled check for \$456.00 to Captain Thomas C. Tait, 1866.

Descriptive catalog of the Marine Collection at India House, facsimile of 1973 revised copy.

Two granite quarry photos, c. 1880.

Attack on Orleans, Jake Klim, 2014.

The Cruise of the Blue Dolphin, Nina Chandler Murray, 2002.

Zygmund Jankowski, Hall, Briere & Movalli, 2014.

Winslow Homer: The Nature and Rhythm of Life, Arkell Museum at Canajoharie.

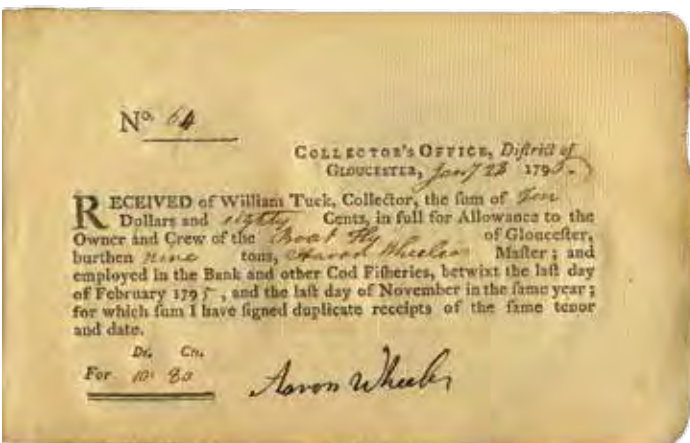
The Columbia Gazetteer of the World, three volume set, 1998.

Letter from John J. Pew on Gorton-Pew letterhead to Rev. Charles H. Williams of Oberlin, Ohio, 1917, referring to takeover of C. Thompson & Co. and disbelief that there will be war with Germany.

Slaying the Dragon: A Story of Cape Ann Life, by D.O. Clark, published by the National Temperance Society, New York, 1888.

Circuit Court of the United States, District of Massachusetts: Gloucester Isinglass and Glue Co. v. Reuben Brooks, et al., 1881.

Library and photograph collection of Barbara Erkkila.



Receipt book for codfish allowances, 1795–1796, made possible through the generosity of William and Janet James and Russell Sandfield.



2014 marked the sixth year that the Museum's White-Ellery House (1710) served as the backdrop for a series of contemporary art installations and historical presentations. Scheduled to correspond with Escapes North's *17th Century Saturdays* program, the installations attracted large audiences and resulted in spirited exchanges between visitors and artists.

June 7, 2014

George Wingate and Gordon Williams: *About Time*
Using visual art, sound and written words, Wingate and Williams sought to transform the historic interior space in juxtaposition to the sounds of nature and time (above).

July 5, 2014

July White and Kyle Nilan: *Bringing the Outside In*
Through a collection of audio and visual art White and Nilan investigated 'the outside' and their relationship to it as visitors, inhabitants, and collectors.

August 2, 2014

Robert Trumbour: *Now.Then.Again.*
Exploring ideas provoked by 19th century philosopher, Henri Bergson, Trumbour's work considered the space that exists between memory and the present moment.

WHITE-ELLERY HOUSE CONSERVATION

In 2014, plans were laid for restoration of the original front entryway of the White-Ellery House and grants were received from the following organizations to fund the project: The Bruce J. Anderson Foundation, the Society of Colonial Wars in the Commonwealth of Massachusetts and the General Society of Colonial Wars. Actual work, which will involve replacement of the door and installation of a leaded glass transom window above it, will commence in the spring of 2015.

EXHIBITIONS

Exhibitions are always planned to showcase the collection, to celebrate Cape Ann creativity past and present, and to inform and engage our visitors.

When the Museum reopened in mid-August, members and friends were greeted with exciting new spaces and additions to the collection such as the Fresnel lens and the *Strong Breezes and Passing Clouds* installation by Diane KW. "Special" exhibitions were drawn from the permanent collection, which was reinterpreted and reinstalled in beautifully renovated galleries. Exhibitions included:

**A CHOSEN PLACE: WALKER HANCOCK & FRIENDS
August 19, 2014 to February 1, 2015**

This exhibition presented a selection of sculpture by Walker Hancock along with works by some of his Cape Ann colleagues, including George Demetrios, Paul Manship, Katharine Lane Weems, Anna Hyatt Huntington, James McClellan and Daniel Altshuler.

**THE IMPORTANCE OF PLACE: A SKETCHBOOK OF
DRAWINGS BY STUART DAVIS**

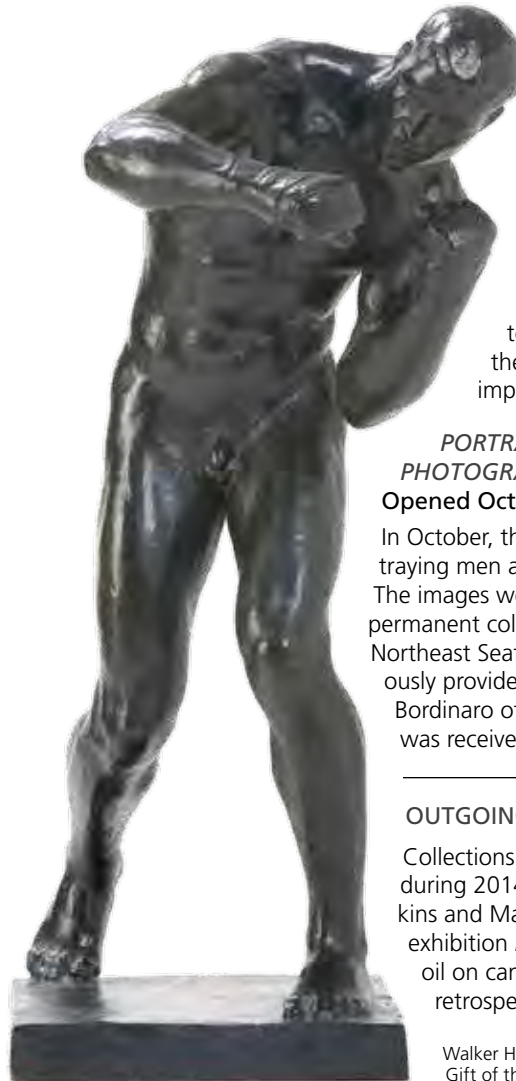
Opened August 19, 2014

With this exhibition of drawings done by Stuart Davis on visits to Cape Ann between 1929 and 1938, the Museum explores the importance of place in the career of one of this country's most important 20th century artists.

**PORTRAITS OF A WORKING WATERFRONT:
PHOTOGRAPHS BY JIM HOOPER**

Opened October 11, 2014

In October, the Museum opened a special exhibition of 71 photographs portraying men and women presently involved in Gloucester's fishing industry. The images were taken by Jim Hooper and are now part of the Museum's permanent collection. The exhibition was organized in partnership with the Northeast Seafood Coalition of Gloucester; funding support was generously provided in honor of Gloucester fisheries entrepreneur James "Red" Bordinaro of Empire Fish Co., by Jim and Jan Bordinaro. Additional support was received from John and Janis Bell, Cleveland Cook and Bruce Tobey.



OUTGOING LOANS

Collections Committee approval was given to lend the following works during 2014: An unattributed oil on canvas portrait of twins Grace L. Perkins and Mabel S. Perkins, painted around 1865 to the Ipswich Museum's exhibition *Focusing on the Child* and Paul Strisik's (1918-1998) undated oil on canvas *Annisquam River* to the Rockport Art Association for a retrospective of Strisik's work.

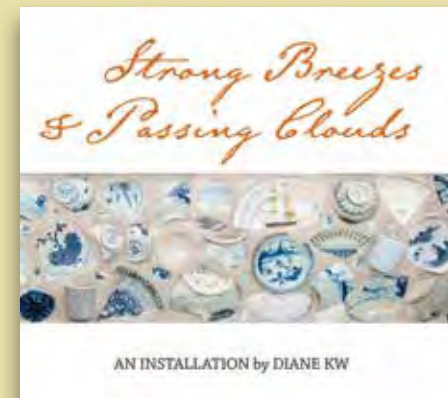
Walker Hancock (1901-1998), *Roman Boxer*, 1928, bronze. Gift of the estate of the artist, 2001. [2001-27-1]



In 2014 the Museum published two exhibition catalogs and an annual calendar featuring works by Fitz Henry Lane.



Funding support for the catalog was generously provided by Jim and Jan Bordinaro in honor of Gloucester fisheries entrepreneur James "Red" Bordinaro of Empire Fish Company. Additional support was received from Jim Hooper, John and Janis Bell, Bruce Tobey and the Northeast Seafood Coalition of Gloucester.



Funding support for the catalog was generously provided by the Babson Historical Association. Additional support was received from the Kanter Kallman Foundation, Diane KW and Judith Monteferrante.

Jim Hooper, digital inkjet prints, 2013 from *Portraits of a Working Waterfront*. Collection of the Cape Ann Museum. Gift of the photographer, 2014.

PROGRAMS AND EDUCATION

The Museum's annual program calendar is designed to complement its collections and special exhibitions. Because the Museum was closed for renovations for more than half the year, programming was offered offsite through August. Films, lectures, walking tours and boat excursions were held in collaboration with community organizations throughout the North Shore. Upon reopening, the focus shifted inward. Members and friends were treated to a robust schedule of gallery talks, artist demonstrations, musical performances and evening lectures, all providing insight into the art, history and culture of Cape Ann.

THE NUMBERS

- In 2014, the total number of classes and programs offered to adults and children was 230, and the total number of people who participated in these offerings was 8,900.
- 4,100 children and families participated in more than 169 programs designed specifically for them, and more than 4,800 adults participated in 61 educational and outreach programs offered.
- In spite of the closure, the Museum's docents led 190 tours in 2014, introducing 1,050 visitors to the Museum and its collections.

HIGHLIGHTS

Early in the year members enjoyed special events, gallery talks and walking tours at Montserrat College, Endicott College, Ipswich Museum, Manchester Historical Museum and Maritime Gloucester. Off land, they explored Gloucester Harbor at sunset aboard the Schooner *Ardelle* and the Twin Lights on Thacher Island with the Thacher Island Associa-



tion. Walking tours throughout the summer months shed light on the neighborhood around the Museum. When the galleries reopened, special talks, tours and extended evening hours provided the opportunity to introduce the community to newly renovated spaces. Exhibition-related programming included a presentation by Stuart Davis scholar Karen Wilkin, a conversation between Walker Hancock's daughter Deane Hancock French and Director of the Fuller Craft Museum Jonathan Fairbanks, as well as a gallery talk with *Portraits of a Working Waterfront* photographer Jim Hooper.

New this year was our partnership with Boston's Copley Society of Art to launch the Charles Family Cape Ann Residency. Painter Eleanor Cedrone was the first artist to participate. Other collaborative efforts included the Distinguished Artist/Teacher, Goetemann Artist in Residency Lecture with Rocky Neck Art Colony featuring Tim Hawkesworth; a panel discussion about Stacy Boulevard, *Everybody's Neighborhood* with the Gloucester Lyceum and Sawyer Free Library, and the Dogtown Conference with various community organizations. The Cape Ann Museum film series at Cape Ann Community Cinema remained a consistent monthly attraction throughout the year.

Ongoing work with area senior centers and homes for the elderly continued through our *CAM Connections* program. The program received generous funding from Mass Humanities and was recently awarded a grant from Cell Signaling Technologies to create intergenerational exchanges between local students and seniors.

YOUTH AND FAMILY PROGRAMS

Highlights of programs designed specifically for children and their families, included:

- The *Countdown to Kindergarten* event offered in collaboration with the Gloucester Public Schools which introduced 335 children and their families into the Museum.
- The monthly *Family Fun Free Day* and the quarterly *Saturday Showcase* programs which delighted 600



Artist Susan Hershey works with O'Maley students as part of the *Artistic Bridges* program.

children and families during the year. Support for these programs was received from the Goldhirsh and Tower Foundations.

- The continuation of *Young at Art for Head Start* sponsored by the McCarthy Family Foundation—a special program which connects students in Cape Ann's Pathways for Children program to the treasures in the Museum's collection.
- *Artistic Bridges* presented in collaboration with the Gloucester Education Foundation and the Gloucester Public Schools brought 26 artists and musicians into classrooms throughout the district.

The Museum also welcomed students from local and international schools, preschool-aged through college, and participated in the following community-wide events: Gloucester Public Schools Arts Festival, the Cape Ann Family Fun Fair, Cape Ann Farmers' Market, Essex Farmers' Market, Schooner Festival and Middle Street Walk.

Docent Marion Hall and *CAM Connections* participants.

FRIENDS AND VOLUNTEERS

We are deeply grateful to our friends and volunteers who play a vital role in advancing the Museum's mission. They share their time, expertise and enthusiasm and serve as the Museum's ambassadors to the larger community.

ASSOCIATES / DOCENTS

Gail Anderson
Selma Bell
Beth Brau
Max Callender
Anne Babson Carter
Sharon Deveny
Dawn Dexter
Anita Freeman
Judy Friend
Pippy Giuliano
Marion Hall
Tom Halsted
John Huss
Bruce Jones
Sarah Mowitt
Stevie Neal
Elaine Ohlson
Trudi Olivetti
Ann Pulver
Mary Rhinelander
Anne Seymour-St. John
Trina Smith
Carol Stearns
Ingrid Swanson
Matt Swift
Bonnie Sylvester
Hazel von Rosenvinge
Miriam Weinstein
Patsy Whitlock

COLLECTIONS / EDUCATION / PROGRAMS

Les Bartlett
Deane Hancock
Brad Story
William Traves
Michael Wall

FITZ HENRY LANE COMMITTEE

Hope Bachelder
Jackie Bell
Bonnie Covington
Kathy Galligan

Susan Goodchild
Christine Lundberg
Jenifer McDougall
Lorraine Schulte
Judy Shields
Leslee Shlopak

FOLLY COVE DESIGNERS COMMITTEE

Deb Carlson
Beth Coolidge
Bonnie Covington
Rose-Marie Glen
Mary Granfield
Christine Kahane
Christine Lundberg
Grace Murray
Lee Natti
Susanna Natti
Brenda Richardson
Candace Wheeler
Patsy Whitlock

FRESNEL LENS COMMITTEE

J.J. Bell
Peter Bergstrom
John Cunningham
Tom Hovey
John McGlennon
Sarah Mowitt
Arthur Ryan
Paul St. Germain
Bill Whiting

LIBRARY & ARCHIVES VOLUNTEERS

Anthea Brigham
Sam Ciolino
Sarah Dunlap
Bing McGilvray
Trudi Olivetti
Mary Rhinelander McCarl
Howard Thomas

MARITIME/FISHERIES COMMITTEE

Tom Balf
J.J. Bell
Nick Brancaleone
William Cross
John Cunningham
Nina Goodick
Sam Holdsworth
Tom Hovey
William James
David Porper
David Rich
Arthur Ryan
Paul St. Germain

RED COTTAGE SOCIETY COMMITTEE

Stephanie Benenson
Ariane Doud
Caroline Esdaile
Allison Mueller
Lisa Rich
Emily Bell Tryee

WHITE-ELLERY HOUSE VOLUNTEERS

William Cross
William Finch
Prudence Fish
Coralie Ingraham
Helen McCabe
Don Pollard
David Rhinelander
Maggie Rosa
Carol Rose
Bernadine Young



From left: docents Gail Anderson, Anne Seymour-St. John, Dawn Dexter and John Huss, actors Lauren Suhecki, Jay DiPrima and Rick Doucette, docent Hazel von Rosenvinge (far right).

Minister, Innkeeper, Mistress, Merchant, the theatrical performance written by the CAM Associates Specialty Tours Committee and featuring performances by local thespians Jay DiPrima, Rick Doucette, Lauren-Ashley Suhecki and Gordon Baird, was premiered at the historic White-Ellery House this year. Four 18th century characters connected to the house—Reverend John White, James Stevens, Abigail Allen Ellery and Benjamin Ellery—brought the house to life in this dramatic reenactment.

Now over 300 years old, the White-Ellery House is an important First Period house owned by the Cape Ann Museum. Not only is it architecturally significant, but the lives of the people who occupied the house mirror the history of Cape Ann. Starting in the 17th century, the surrounding area was known as Town Green. It was the principal early settlement on Cape Ann. A meeting house was erected, and later the White-Ellery House was built (1710) for minister Rev. John White and his family. Town Green became known as First Parish. In 1738, First Parish moved to Harbor Village (downtown Gloucester) and Town Green became Fourth Parish. By the time of the move, Rev. White had already sold the White-Ellery House (1733) and had moved closer to downtown on present-day Centennial Avenue. The Town Green meeting house was finally demolished in the 1830s. Originally located closer to the Annisquam River, the White-Ellery House was moved in 1947 to make room for Route 128 and Grant Circle. *Minister, Innkeeper, Mistress, Merchant* portrayed the four early owner/occupants of the house, spanning most of the 18th century.



Funding for these programs was made possible through a grant from the Massachusetts Cultural Council, a state agency, which promotes excellence, access, education and diversity in the arts, humanities and interpretive sciences, in order to improve the quality of life for all Massachusetts residents and to contribute to the economic vitality of our communities.

2014 FITZ HENRY LANE SOCIETY MEMBERS

\$5,000

J.J. and Jackie Bell
Stephen and Jill Bell
Dorothy A. Brown
John and Mollie Byrnes
Ted and Jan Charles
Linzee and Beth Coolidge
Chris and Bonnie Covington
Alec Dingee and Susan Gray
Jack Haley
Wilber and Janet James
Margaret Pearson
Arthur Ryan
Bob and Ashley Scott
Richard and Donna Tadler
Alan Willsky and Susanna Natti

\$2,500

Robert and Hope Bachelder
Kermit and Glenys Birchfield
Richard and Deborah Carlson
Herb Collins
Phil and Eve Cutter
Deborah Freeman
John and Kathy Galligan
Henrietta Gates and Heaton Robertson
Tom and Caroline Hovey
Bill and Nancy Lynch
Amy Moore
Hinda Simon
Tom and Kristin Zarrella

\$1,000

Filiberto Agusti and Susan Whilton
Robert Amory
Christine Bancheri
Walter and Gina Beinecke
Mac Bell
Karen Bell
John and Jan Bell
Deborah Blake
Kevin and Rosemarie Bottomley
Thomas Brooks and Karen Newman
Samuel and Rebecca Campbell
Thad Carpen and Susanne Guyer
Bettie Cartwright
Robert Chandler and Ronda Faloon
Peter and Katherine Coakley
Pearce and Phoebe Coues
Robert Cox and Karen Bell
Robert and Jan Crandall
Thomas and Patricia Cronin
Bill and Ellen Cross
Robert and Jennifer Culbert
John and Lee Cunningham
David and Mary Dearborn
Chris and Jane Deering
Ronald Druker and Julie Freedman
Betty Ellis
Ken and Alice Erickson
Ian and Josie Gardiner
Darius and Stephanie Gaskins
Rose Marie Glen and Clare Bromley
Mark Glovsky and Olivia Cowen
Amnon Goldman and Mary Ball
Sarge and Susan Goodchild

Tamara Greeman
Kathy Hamilos
James Hand
Jerry and Margaretta Hausman
Jim and Mary Hayes
Mary Healy
Peter and Gerry Herbert
Harry and Mary Hintlian
Samuel and Elizabeth Holdsworth
Stephen and Missy Kasnet
Patricia Kerstein
Jan Koch-Weser and Diane Chen
Catherine Lastavica
Paul and Jackie Littlefield
Ann Lord
Fred and Jill Lovejoy
Joan Lovejoy
Paul and Christine Lundberg
Doris Lynch
Marietta Lynch
Connie and Elton McCausland
John and Mary Ann McCormick
Ann McDonald
Dan and Jenifer McDougall
Roger and Carol McNeill
Richard Mills and Amy Bell
Christine Moore
Joe and Eileen Mueller
Greg and Stevie Neal
John and Pam Newberry
Myranda O'Bara
John and Sarah Perry
George and Nancy Putnam

George and Kathy Putnam
John Rando
Judson and Lisa Reis
Howard and Joan Resnikoff
David and Lisa Rich
Carlos and Diane Riva
Roger Salisbury and Judith Monteferrante
Stuart Scantlebury and Lecia Ann Turcotte
Buzz and Lorraine Schulte
Jack and Shelagh Schylling
Tim and Christy Sheehan
Jack and Judy Shields
Tom and Lyn Shields
Leslee Shlopak
Steve and Lisa Smit
Andrew Spindler and Hiram Butler
Campbell and Grace Steward
Peter and Lynda Surdam
Ingrid Swanson
Lynn and Joan Swigart
Bill and Jolinda Taylor
Bill and Roswitha Traves
David Tyree and Emily Bell
Ernst and Gail von Metzsch
Clara Wainwright
Michael and Tee Wall
Scobie Ward
David and Mary Warner
Peter and Thi Linh Wernau
Harold and Lucette White
Peter and Winifred Whitman
Clive Wood and Stella Martin
Chip and Margaret Ziering

MEMBERS

The Cape Ann Museum depends on the generosity of the people and institutions who share a belief in its mission. The Museum gratefully acknowledges the Museum members who have supported the Museum this year—January 1, 2014 to December 31, 2014.

BENEFACTORS \$500

Mary Barcus
 Nancy Barnett
 Allan and Phyllis Bezanson
 Peter and Annette French
 Justin and Kari Gale
 Tom and Beverly Gillette
 Ronald Glick and
 Sarah Robbins-Evans
 Garth and Lindsay Greimann
 Richard and Joan Gross
 Noel Mann and Daan Sandee
 Henrietta Meyer
 Donald Saunders and Liv Ullmann
 Tom and Sally Simons
 David Tufts
 Linda Walker

SPONSORS \$250

Stefan and Barbe Abramo
 Ken and Margie Anderson
 Norma Andrews
 Devereux and Jilda Barker
 James and Chris Barker
 Ed and Sheila Becker
 Thomas and Becky Bernie
 Standish and Brigitte Bradford
 John and Kate Cabot
 Diana Connors
 Janet Cookson
 Nathaniel and Catherine Coolidge
 Martin and Natalie Daley
 George Davis and Lisa Bonneville
 Adele Ervin
 Diane Faessler
 Elizabeth Fragola and
 Nicholas Senzamici
 Howard and Naomi Gardner
 Jack and Susan Gardner
 Jonas Gavelis and Bonnie Sylvester
 Michael Gerstein and
 Katherine Mierzwa
 Philip Goldsmith and Melissa Boshco
 Mark and Janet Gottesman

Mark Grebbin
 Louise Grindrod and Robert Paterson
 William and Rose Hausman
 Robert Henriques and Jane Singer
 Kenneth and Anne Herman
 Harry and Judith Hoglander
 Ken and Billie Hruby
 Helen Joseph
 Ken and Cathy Kaplan
 Jonathan Katz and Norah Wylie
 Tom and Maryanne Kiely
 William and Anne Kneisel
 Peter and Bobbi Kovner
 Stephen and Sigrid Lindo
 Mark and Martha Morgan Lindsay
 Robert and Joan Lockwood
 Daniel and Marcy Lyman
 Jane Lyman
 Charlie and Janet Marcous
 David and Louise Marsh
 James and Dorothy Matthews
 Robert and Eileen Matz
 William and Jane McConnell
 Susan McKain and Ken Steiner
 Jay McLaughlan and Sara Stotzer
 Fern Miller
 Henry and Valerie Moore
 Jon and Carol Morse
 Peter Mowschenson and
 Nadine Berman
 Walter and Linda Murphy
 Lee Natti
 Leslie Nicholson
 John and Jane Olson
 Christopher and Esther Pullman
 Anthony and Clare Quinn
 Robert and Susan Reece
 John and Jean Rees
 Edward Reither and Liisa O'Maley
 Michael and Patty Rosenblatt
 David and Marie Louise Scudder
 Stephen and Rachel Silver
 David and Ann Simmons
 Steve and Linda Sojda

David and Ginni Spencer
 Jeff and Naomi Stonberg
 Nancy Strisik
 Howard and Betty Thomas
 Yuri Tuvim and Mary Louise Giuliano
 Douglas and Priscilla Viets
 Robert and Margaret Wallis
 Katherine Walters
 Mike and Candace Wheeler
 Richard and Deirdre White
 Sib and Judy Wright
 Edward Zuker and Judi Rotenberg

CONTRIBUTORS \$100

Elizabeth Akerley
 Barbara Almy
 Eugene Alves
 Gail Anderson and Bill Effner
 William and Yvette Anderson
 Alison Anholt-White
 Judith Avery
 Gordon Baird and JoeAnn Hart
 Thomas and Shiela Baker
 Vinse and Carlene Barrett
 Geoffrey Bayliss
 Barbara Beauchamp and
 Susan Raymo
 Jo Ann Bell and Marv Tighe
 Selma and Leslie Bell
 Linda Berard
 Gottfried and Karen Berger
 Edward and Linda Berger
 Beverly Public Library
 Ted and Judy Bidwell
 Barbara Bjornson
 Louise Blodget
 Brian Bones
 John and Jane Bradley
 Lewis and Miriam Braverman
 Chester and Anthea Brigham
 Elana Brink
 Mr. and Mrs. Robert Brown
 Thomas and Mimi Brown
 Ralph and Elizabeth Browning

Lois Brynes and Serena Hilsinger
 Joan Buchanan
 Thomas Burger and André Robert
 Paul Butman and Sharon Lake
 Ann Byers
 Samuel and Claire Cabot
 James and Charlene Callahan
 Steven Caron and Betty Bouchard
 Anne Babson Carter
 Philip Chalmers and Susan King
 Chester and Ellen Clark
 Amy Clements
 Donald and Linda Comb
 Kevin and Diane Connolly
 Wendel and Suzanne Cook
 Peter and Connie Corbino
 Michael Costello
 Evelyn, Barbara and Judy Cox
 Robert Coyne
 Ray and Monica Crane
 Albert and Hilary Creighton
 Robert and Jean Cunningham
 Ronald and Joan Curhan
 Arthur and Julie Daniels
 Alev Danis and David Moschella
 Jack and Betty Davis
 Craig and Laurel Deery
 Charlene Delaney
 Robert and Ann DeMaine
 Bob and Leslie Dews
 Stephen and Dawn Dexter
 Steven Dieck and Hatsumi Miura
 James and Fafa Diedrich
 Patricia Donahue and Greg Sacca
 Sarah Dunlap
 William Duryea and Anne Bowdoin
 Robert and Surrey Elwell
 Robert and Mary Emmons
 Constance Eppel
 Peter and Jan Eschauzier
 Edward Everett
 Ronald and Sandra Faloon
 Jay and Helen Featherstone
 Peter Feinstein and Miriam Weinstein

FHL SOCIETY \$2,500
 Cape Ann Savings Bank

FHL SOCIETY \$1,000
 Bomco, Inc.
 Building Center

Cape Ann Marketplace
 Carroll Steele Insurance Agency
 Elizabeth Clement Fine Arts
 KVAssociates, Frank Vanzler
 Mercury Gallery
 Nor'East Cleaners
 Timothy S. Hopkins Catering
 Women on the Move, LLC

BENEFACTORS \$500

Ambient Temperature Corporation
 Atlantis Oceanfront Inn
 Cricket Press, Inc.
 Gorton's Seafood
 Timberline Enterprises
 W. Herbert Goodick, Inc.

SPONSORS \$250

Glovsky & Glovsky, LLC
 Olson Lewis + Architects
 Pasquina Law Office
 Pulsifer & Associates
 Rockport National Bank
 Vista Motel, LLC

CONTRIBUTORS \$100

Again & Again
 BankGloucester
 C.B. Fisk, Inc.
 Cape Ann Insurance Agency, Inc.
 Coldwell Banker
 Deborah Coull Salon
 Essex Alarm and Security, Inc.
 Glover's Floor Covering
 Hecht Development
 Hershey Frame Shop
 Ocean Alliance
 Sparx Cubed, Inc.
 Sue Henderson Ed Consulting
 Trident Gallery



Plum Cove Singers perform at the Museum during Middle Street Walk.

Mary Fillman
 Josiah Fisk
 Carolyn Fuchs
 John Fuller
 John Gale
 Charles and Jane Gardiner
 David Gardner
 Timothy and Katerina Gates
 Joseph and Catherine Geary
 Kecia German
 Lester Gimpelson and L. G. Cagnasso
 Charles Gladstone and Elaine Souza
 John and Andrea Glovsky
 Lia Glovsky
 Blake Godbout and Paula DeGiacomo
 Gordon and Judith Goetemann
 Ruth Goodick
 Michael and Karen Gorton
 Joyce Griffin
 James and Katherine Groves
 Lauren Gudonis
 Henry and Gail Guild
 Carl and Judy Gustin
 Mark and Beth Haberland
 William Haberland and
 Millie Manning
 Christopher Hadley and Scott Smith
 Robert Hall
 Douglas and Susan Hall
 James and Leslie Hammond
 Mimi Harper
 Jane Harris
 David and Michele Harrison
 Bruce and Meg Herman
 Janet Herrmann

Susan Herron
 James Hickey
 Emma Higgins
 Rachel Higgins
 Richard Higgins
 Hal Hirshon and Lois Goodell
 Ted and Susan Hoague
 Eloise Hodges
 Peter Hornbeck and Martha Leven
 Paul and Betsey Horovitz
 Charles and Nancy Hovey
 John and Sally Huss
 Robert and Pamela Irwin
 Robert and Patricia Jedrey
 Karen Johnson
 Carol Judd
 Stephen Kaloyanides
 Eileen Kelley
 Cliff King and Catherine Ryan
 Carolyn King
 Christine Kinney and Bill Siderewicz
 Eric and Johanna Kreilick
 Miles and Joan Kulukundis
 Doug and Sylvan LaChance
 Ellen Landrigan
 Stephen and Janet Langer
 Thomas and Grace Lattof
 Milt and Helen Lauenstein
 Peter and Sandy Lawrence
 Robert and Martha Lawrenz
 Michael and Nancy Leavitt
 Kenneth and Royce Leonards
 Kathleen Lieser
 Richard and Pamela Loomis
 Beverly Low

Nancy Lui-Kwan
 Sheila Lummis
 Mary Malone
 Thomas and Ann Mannle
 Robert and Nancy Marculewicz
 John and Ethel Martin
 Rob Martin and Trish Roach
 Alex and Julie Mattera
 David and Janet McAweeney
 Roy and Shelagh McCauley
 Robert McPhail and Susan Guest
 David and Judy Messick
 Merritt and Linda Miller
 Carl and Shirley Moores
 Michael and Kathleen Morelli
 T. Lincoln and Mary Lou Morison
 Dan and Beth Morris
 Frederic and Elizabeth Morris
 Sarah Mowitt
 Paula Mullendore
 Scott and Grace Offen
 David Olsen
 Elizabeth Olson
 Kevin and Emily O'Malley
 Jerrold Oppenheim and
 Theo MacGregor
 Richard and Alice Osgood
 Leonard Parco
 John and Olivia Parker
 Kate Parsons
 Davis and Deborah Pearce
 George and Joann Phillips
 Ralph and Kathleen Pino
 Paul andCarolynn Pitman
 Ted and Kathy Pomfret
 Oliver Radford and Stephen Perry
 Suesan Randlett and David Hunter
 Robert and Jan Randolph
 Elizabeth Rhineland and
 Peter MacEwen
 Benjamin and Courtney Richardson
 Bud and Margaret Ris
 George and Daphne Roark
 Blair and Chassea Robinson
 Harold and Linda Rogers
 John and Sandy Ronan
 Joseph and Maggie Rosa
 George Rosen and Barbara Gale
 Bruce and Jane Rosenberg
 Melvin and Martha Rosenblatt
 Stephen and Kit Rosenthal
 William and Susan Ross
 Ronald Ross and Mary Benham

Albert and Cynthia Roth
 Dick and Olga Rothschild
 Ned and Susie Rowland
 Paul and Barbara Russell
 Stephen and Janet Sacca
 Jeffrey and Christa Sammons
 Russell Sandfield and Sabine Ralston
 Virginia Scott
 Claudine Scoville
 Paul and Dona Shea
 George and Ellen Sibley
 Joan Sindall and
 MacGregor Freeman
 Christopher and Cary Smallhorn
 Angus Smith
 Val and Evelyn Somers
 Frank and Jeanne Speizer
 Lee and Hazel Spence
 Eileen Sporing and Jocelyn Ramella
 Robert Stern and Gail Howrigan
 David and Fenton Stirling
 Judith Strohm
 Donald and Phyllis Sudbay
 James and Tom Sutherland
 Brian Tarr
 Joyce Thomas
 John and Marilyn Thompson
 Noel and Judith Thyson
 Bruce and Pat Tobey
 Linda Tosi and Howard Burkholder
 Chris and Ellen Velline
 Blair and Sarah Villa
 Regina Villa
 Oliver and Ellen Wadsworth
 Judith Walcott
 Edward and Eva Walker
 Graham and Jan Walker
 Stephen and Anne Warhover
 Cornelius Waud
 Barry and Susan Weiner
 James and Virginia Welch
 Bruce Welty and Rachel Perry Welty
 John Westerberg
 Anthony and Joreen White
 Bradford and Geneva Whitten
 Ted Widmer and Mary Rhineland
 Fritz and Peggy Willmann
 Kathy Wilson
 Oliver and Carolyn Wolcott
 Jane Wolf
 Peter Wolfskehl and Gail Sarofeen
 Suzanne Ziemer
 Jason and Margaret Zorfaz

MEMBER/MEMBER+ \$45 to \$75
 Mim Aaronian
 Shep Abbott
 Jerry and Carol Ackerman
 Robert Ackerman
 George and Allison Adam
 Jeremy and Kathleen Adams
 Raymond Agler and John Carter
 Phyllis Akillian
 Amory and Deborah Aldrich
 Willie Alexander
 Nubar Alexanian
 Marie Alfieri
 Francis and Rebecca Aliberte
 Nancy Alimansky
 Herbert and Catherine Allard
 Lawrence Allen and Marcia Lindsey
 Allen County Public Library
 Eric and Monica Allon
 Lois Alves
 Louise Todd Ambler
 Tom Amend and Elizabeth Bish
 Linda Amero and Hank Turgeon
 Linda Ames
 Peter Anastas
 Anna Andella
 Patricia Anders
 Anne-Marie Anderson
 Bob and Judy Anderson
 Bob and Peg Anderson
 George and Jean Anderson
 Eben and Sandy Andrew
 Thomas and Nancy Andrew
 Willard and Linda Andrews
 Jean Anjoorian
 Rory and Jean Ancombe
 Jean Appelfofft
 John and Sarah Appleton
 Max and Denise Arai
 Nan Araneo
 Kathleen Archer
 Erich Archer
 David Archibald and Marion Phipps
 Mark and Judy Arnold
 Linda Ashley
 Ronald Atwood
 James Avallon and Michael Gendre
 Joanne Avallon and Kurt Ogle
 Merribel Ayres
 Isobel Baade
 David and Val Babson
 Jim and Kathy Bacsik
 Will and Susan Baldwin

Tom Balf and Donna Heaney
 Nancy Balf
 Duncan and Mara Balsbaugh
 Larry Bankart and Marilyn Mercer
 Ann Banks
 Phyllis Barnett
 Cynthia Barrett and Carey Hodges
 Mary Barthelmes
 Les Bartlett
 Teresa Basler
 John Bassett and Christina Wolfe
 Joe Bayes and Lynda Goldberg
 Ann Baylies
 Peter and Janice Beacham
 Kenneth and Helen Beal
 Mary Beck and Wilma Busse
 JoAnn Beck
 Beate Becker-Vavak and
 Stephen Vavak
 Pat Beckett and Lorna Condon
 David and Jane Beddus
 Corina Belle-Isle
 Robert and Merrillyn Belliveau
 David and Sally Benjamin
 Geoffrey and Martha Bentley
 John and Ann Berges
 Peter and Joyce Bergholtz
 Shari Berkal and Bruce Lascola
 Maureen Berkley
 Sam and Vivian Berman
 David and Lida Bernard
 Linda Berry
 Susan Berry
 Anthony and Patricia Bertolino
 Deborah Beveridge
 Jonathan and Diane Bevins
 Barbara Beyea
 Bradford Bigelow
 Deborah Bird
 Jack Bishop and Susan Hand
 Julia Bishop
 Charlotte Bishop
 John and Cynthia Bjorlie
 Jody Blagdern
 Sheila Blake
 James Blanco
 John Blanding
 Marie Blanding
 Dale Blank and Tom Fox
 Bernice Blitz
 Dale and Alden Blodget
 Rick Blue and Lindsey Crouse
 Alan Blummer and Jill Goldman

Judith Bly and Abraham Newman
 Christine Bobek
 Hollis Bodman
 Eric and Adrienne Boeker
 Frank and Leslie Bordonaro
 Steven and Susan Boshi
 Robert Bosselman
 Linda Bourke
 David and Maureen Bovet
 Martha Bowen
 Kent and Joanna Bowker
 Glenn and Jane Bowles
 Babette Brackett
 Barbara Brackett
 Judith Brackley
 Loring Bradlee
 Bruce and Joan Bradshaw
 Sally Bradshaw and Dottie Murkland
 Robert and Lori Bradshaw
 Suzanne Brailey
 Peter Brau and Bethany Fritzsche
 Peter and Linda Braun
 Alan and Barbara Braver
 Ron Breault
 Donald and Katherine Breen
 Lise Breen
 Barbara Brewer
 Stephen and Dicsee Bridges
 Barbara Bridges-Elliott
 Linda Briggs
 Susan Britt
 Lois Bronnenkant
 Lise Breen
 Barbara Brewer
 Stephen and Dicsee Bridges
 Barbara Bridges-Elliott
 Linda Briggs
 Susan Britt
 Lois Bronnenkant
 Doug and Cassie Brown
 Elaine Brown
 Isabelle Brown
 Jane and Laura Brown
 Jeffrey Brown and Kathryn Corbin
 Katherine Brown
 Mike and Betsy Brown
 Shepard Brown and
 Elisabeth Simonds
 Martha Brox
 William and Barbara Bruns
 Richard Buccì
 Carolyn Buckley
 Philip and Lois Budrose
 Joy Buell
 Mary Burgarella
 Angela Burke and Jane Burke-Miller
 Charles and Maria Burnham
 Ross Burton
 William and Sharon Burton
 Joseph Butler and Nancy Davis

Liz Butler
 Bill and Gerrie Butman
 Paula Bzdula
 John Caggiano
 Elizabeth Calder
 Andy and Peggy Calkins
 Bruce and Ann Campbell
 Marie Campello
 Douglas and Sarah Caraganis
 Edward Carberg
 Barbara Careaga
 Jonathan and Jill Carey
 Mark Carlotto
 Karen Carpenter
 Randolph Carr and Gabrielle Barzaghi
 Marty and Susan Carriere
 John and Anne Carty
 Robert Cashman and Lynn Browne
 Francie Caudill
 Holly Cavanaugh
 Verne and Madeline Caviness
 James Chadbourne
 Lawrence Chakrin
 Scott Channell
 Naomi Chapman
 Karen Chellquist
 Michael and Jill Chipperini
 JoAnne Chirico
 Bradford Chisholm and Gail Smith
 Angela Ciaramitaro
 Nathaniel and Hester Clapp
 Carroll Clark
 Elaine Clark
 Gail Clifford
 John and Bayard Cobb
 Margaret Coe
 Dana and Virginia Cohen
 Dave and Sharron Cohen
 Irma Cohen
 Nathan Cohen
 Frances Colburn
 William and Betsey Colby
 Don and Mary Cole
 Ashley Cole
 Doris Cole
 Dorothy Cole
 Hugh and Joan Collier
 Bob and Sally Collini
 Pat Lowery Collins
 Stan Collinson and Daisy Nell
 Cynthia Conant
 Patricia Conant
 Lorna and Patricia Condon



Sculptor Robert Shure hosts CAM Docents at Skylight Studios.

Pat and Anna Conlon
 John and Polly Connors
 Gretchen Contrino
 Cleveland and Ellen Cook
 Linda Cook
 Jon and Geri Corbino
 Laurie Corral
 Nancy Corral
 John Costa
 Kathryn Costa
 Mary Couchman
 Audrey Coughlin
 Chris Counihan and Eleanor Marks
 Fara Courtney and Jack Clark
 Frederick Cowan and Richard Gardner
 Deborah Cowan
 David Cox
 Kitt Cox and Theresa Dady-Cox
 Maurice Coyle and John Guccio
 Evelyn Craaybeek
 Kathryn Craig
 Paul and Carol Craig
 Bonnie Crane
 Mary Lou Crane
 Stephen and Mary Craven
 Roger Cressey
 Denton Crews and Katherine German
 Robert and Ruth Crocker
 Kathy Cross
 Jennifer Cullen
 Torrance Cullen
 Damon and Melissa Cummings
 Pat Cummings
 Joan Cummiskey
 Andrew Cunningham and
 Kelsey McNiff

Benjamin and Kaia Cunningham
 Frank Cunningham and Anne Black
 Tad and Jane Cunningham
 Frank and Virginia Curcio
 Henry and Judith Curtis
 Matthew Curtis
 Preston Curtis
 Elizabeth Hope Cushing
 Marinus Cutler
 Patricia Dackert
 Jennifer Dahlgren
 James and Patricia Dalpiaz
 Susan Daly
 Mary Lou Dana
 Brian and Debra Darby
 Carl and Mimi Darrow
 Brenda Davis
 Chandler and Nancy Davis
 David and Katherine Davis
 Donna Davis
 John and Sharon Day
 David and Sara de la Barre
 Priscilla Deck
 Charles and Barbara DeCoste
 Debbie DeCotis
 Marta and Stephen Deely
 Michael and Jacqueline DeFalco
 Darryl DelTorchio
 Virginia Dench
 Charlesanna Detra
 Jim and Sharon Deveney
 Bruce and Veronica Devon
 Dean Dexter
 Anita Diamant and Jim Bell
 Judith Diamond
 Brenton and Elizabeth Dickson



Docent Elaine Ohlson gives a tour.

Vicki Diez-Canseco
Genevieve Dionne
Jay DiPrima
Franklin Doeringer
Herold and Mary Ann Doherty
Margaret Donahue
Rick Doucette
Ariane Doud
Richard Douglas
Sandra Douglas
Kathy Downer
Janice Downey
Barbara Drake
Francis Duehay and Jane Lewis
William and Jean Dugan
Henry DuLaurence and Paula Carnelli
Patricia Dumas and Esther Joyce
JP and Andrea Dunn
Mary Duran
Donna Dussault
Karen Dyer
John Easton and Sem Sutter
Thora Easton
William and Deborah Ebeling
Roger and Ruth Edmonds
Carolyn Edwards
Jane Edwards
John and Janet Egan
Carleton and Virginia Ekborg
Martha Elder
Morgan Eldridge and Sheldon Sayre
Celia Eldridge
Deborah Eliason
Susan Elliot
Albert Ellis and
Anne Seymour-St. John
John Ellis

Tom and Kaye Ellis
David and Susan Emerson
Gary Emmer
Tom and Diane Emmons
Dominic and Tamsen Endicott
Elizabeth Enfield
Barbara Erkkila
John and Betty Erkkila
Susan Erony and Jay Jaroslav
Charles and Caroline Esdaile
Mary Ann Esdaile
Jack Evans
Patricia Evans
Jamie and Amy Fanning
Mark and Amy Farber
Ron Farren and Kristal Pooler
Lynda Fatalo
Beverly Feinberg - Moss
Phyllis Feld
Cathy Felton
Bill and Lyn Fenollosa
Ricardo Fernandez and
Diana Brooks Keller
Jane Ferreira
Virginia Field
Adam and Nina Fieldsteel
William Finch and Carol Rose
Guy and Andrea Fincke
Prudence Fish
Christian Fisher
Mary Ann Fisher
Kristine Fisher and Richard Crangle
Francis Fitch
Lyn Fitzgerald
Maureen Flanagan
Newell and Kate Flather
Ronald and Eleanor Fleet

Colin Fleming
Margie Florini
Richard and Diane Foley
Tamasin Foote
Paul Forman
Heidi Forrester
Gregg and Martha Fox
Karl Frank
Audrey Fraser and Richard Stoloff
Tom Fraser
Joseph and Christine Frassica
Paul Frazier
Walter Fredrick
Anita Freeman and Phillip Albright
Joel and Jennifer Fremont
Marion Fremont-Smith
Caroline French
Katherine French
Linette French
Terry and Elizabeth French
Dagmar and Ephraim Friedman
William and Judy Friend
Bob and Jeanne Frishman
Wendy Frontiero
Marion and Martha Frost
Christen Frothingham
Jack Gale
William and Bonnie Gale
Dorothy Ganick
Barbara Gannon and Robert Sullivan
Roger Garberg and Marion Sibley
Michael and Sarah Garcia
David and Alice Gardner
Deborah Gardner
Lynda Gardner
Evelynn Gariedy
Frank and Janet Garrison
Julia Garrison and Andre Beaulieu
Gerry and Eloise Gehr
Adena Geller
Myron and Eileen Geller
Cornelia Gephart
Robert and Mary Gerbrands
Anthony and Margorie Giannelli
Janet Giarrusso
Brooks and Whitney Gibson
Gregory Gibson and
Anne Marie Crotty
Leonardo Gilardi
Robert Gillis and Pixie Harrington
Ron and Joan Gilson
David and Regina Girard
Jeffrey Glaser
Tracy Gleckner and Don Rittenburg

Tony and Samantha Goddess
Rosalyn Gold
Beth Goldberg
Louis and Josette Goldish
Jay and Kathleen Goldman
Curtis Gollrad and Dale Brown
Jennifer Goodman
Leonard and Cheryl Goodman
Bonnie Goodwin
Jane Goodwin
Peter and Jan Goodwin
Gary and Karen Gorczyca
Carmine and Joan Gorga
Joan Gorton
Michael and Patricia Goulart
Connie and Dick Gourdeau
John and Rebecca Graham
Richard Graham and Jane McKeel
Naomi and Patrick Gray
Carol Gray
Mary Grazen-Browne
James and Helen Greely
Margi Green
Barbara Greenberg
David and Katherine Greenberg
David and Janet Grey
Stephen and Linda Greyser
Gary Griffis and Leslie Pearlman
Johana Griffith
Paula Grillo
Paul Gross and Cornelia Tenney
Richard Guarrasi
Margaret Guest
Gail Guttarr
Catherine Gunn
Craig and Louise Gustafson
Janis Guter
Robert and Judith Gwozdziwicz
Sarah Hackett
Thomas and Barbara Ann Hale
James and Susan Hall
Myra Hall and James Tolman
Kathy Haller
Christopher and Joanne Halligan
Laura Hallowell
Isabella Halsted
Tom and Joy Halsted
Michael Hamill
Ruth Hamill
Lauren Hamilton
Hamilton-Wenham Public Library
Ed and Susan Hand
Elisabeth Harding
Harriet Harding

Marion Harding
Edward and Jackie Hardy
John Harrington and
Deborah Marston
Andrew and Katharine Harris
Buck Harris and Cathy Palmisano
Carolyn Harris
John and Kathy Harris
Stephen and Susan Harris
Edward Hart and Anita Robbooy
Katrina Hart
John and Grace Harvey
John and Andrea Hauck
John and Ruth Hautala
Laurence and Laura Hawkins
Brett Hayes
Steve and Martha Heassler
Leslie Heffron
Robert Heinman and Susan Field
Bill and Joy Hennessey
Benjamin Herbert
Gale Hermanet
Richard Heuser
Hazel Hewitt
Bonnie Higgins
Sheila Higgins
Toby Higgins
John Hincley
Bill and Mabel Hinkle
Robert Hinkle
Margaret Hinrichs
John Hintlian
Ann Hochberg and Howard Weinstein
Estelle Hochberg
Yvette Hochberg
Nancy Hodgkins
Ana and Per Hoel
Rollyn and Judith Hoffman
Susan Holden
Harriet Holdsworth
Nick and Debe Holland
Meg and Herb Hollender
Kathryn Hollett
Robert Holloway and Christina Doyle
John and Elizabeth Holmberg
Stephen Holt
William and Lynne Holton
Sarah Honenberger
Lorraine Horn
Israel and Gillian Horovitz
Stephen and Jeanne Howard
Jay and Louie Howland
Eleanor Hoy
Jack and Betty Hubbard

Melinda Huff
 Debby Hughes
 Amanda Hurd
 Ann Hurd and John Rodenhiser
 Jill Hurley
 Priscilla and Daniel Hurley
 Claire Hurst
 Bette Hutchins
 Barbara Hyams
 Shelby Hypes
 Coralie Ingraham
 Nancy Ives
 Paula Ives
 William Jackson
 Jacqueline Jamieson
 Sandra Jamieson
 Taylor Jantz-Sell
 Emily Jay
 Steve and Debby Jencks
 Peter Jenner and Carolin Catalano
 Ray Jenness
 Melissa Jeswald
 Ann Johnson
 Cynthia Johnson
 Diane Johnson
 Janice Johnson
 Mayo and Julie Johnson
 Bruce Jones and Tina Cross
 Margaret Justice
 Suzy Kadiff
 Stephen and Christine Kahane
 Abigail Kaiser
 David and Meredith Kantor
 Beverly Quint Kaplan
 Michael and Barbara Kaplan
 Carol Karlson
 Vladislav and Marina Kasarda
 Donna Katan
 Suzanne Kaufman
 Shayla Kaufmann and Paul Swigart
 Reed Kay
 Christine Kaye
 Johanna Keefe
 Barbara Kelley
 Paul and Leah Kelley
 Deborah Kelsey
 Richard and Randolph Kelts
 Gail Kennedy
 Fred and Lenore Kepler
 Laura Kerr
 Michael and Fiona Kerr
 Phyllis Kerr
 Thomas and Laura Kerr
 Kirsti Kettunen-Belle

John Keyes
 Melissa Keys
 Marilyn Kimball
 Peggy Kimball
 Elizabeth King
 Mark and Judith King
 William and Nancy Kingman
 Priscilla Kippen
 Jen Kirk
 Earl and Sharon Kishida
 J.B. Kittredge and
 Winand van Eeghen
 Jerome and Linda Klein
 John and Lois Knaus
 Laurence and Annette Knight
 John and Colette Knowlton
 Paula Knuuttunen
 Neil Kobrosky and Linda Gipstein
 Peter and Karen Koch-Weser
 Mark and Heather Kolnsberg
 Susan Kolwicz and Ken Parker
 Mary Jane Kornacki and Jack Silversin
 Lee Kowalski
 John and Janet Koza
 Bruno and Barbara Kozel
 John and Carmela Krasnakevich
 Norman Krause
 Michael Kressley and
 Wendy Riggs-Smith
 David Kriebel and Margaret Quinn
 James and Bette Jean Krieger
 Charles and Eileen Kronauer
 Sue Kuendig
 Pamela and Raymond Kuras
 Martha Kurz
 Marvin Kushner
 Peter and Elaine Kuttner
 Mark Lacey and Susan Fehrmann
 Andrew and Grace Ladygo
 Ann and Michael Lafferty
 Mark Laliberte
 Arline Land
 Elsie Landergren
 Maria Lane
 Gerrit Lansing
 Ramona Latham
 Joseph and Karolina Latronica
 Carolyn Lawler
 Jack and Susan Lawrence
 John and Martha Lazarus
 David Leach
 Margery Leach
 Christopher and Kathryn Leahy
 Patricia Leary

Edwin and Marcia Leavitt
 Brenda LeClerc and Laurel Seneca
 Nancy LeGendre and Walter Herlihy
 John LeJeune and Mary Donovan
 Wayne and Marguerite Lemmon
 Janet Lemnah
 Martha Lennon
 Richard Leonard
 Peter and Roxanna Leone
 Lucille LePage
 Janet Lepanto and Richard Metzinger
 Mary Ellen Lepionka
 Sandra Lepore
 Roger and Susan Levine
 Marian Linden
 Carol Linsky
 Michael Lipton and Catherine Bayliss
 Selina Little
 Brooks Lobkowicz
 Paul Lohnes
 Maryjane Long
 Deborah Loomis
 Richard Lord
 Jon and Lucy Loring
 Scott Lovasco
 Margaretta Lovell
 Philip Lowcher
 Jim and Laura Lowell
 Deborah Lucas
 Peter and Elaine Lucas
 Beth Luchner and Jeffrey Berman
 Sash Ludwig and Craig Dulong
 Fitz and Marianne Lufkin
 Robert Lufkin
 Monique Luijben
 Matthew and Rosemary Lundberg
 Susan Lyons
 Douglas and Anna MacArthur
 J.D. MacEachern
 Linda Mahajan
 Edward and Norma Mahoney
 Donald Maier
 Bruce Maki and Ann Piette
 Tim and Stephanie Malarkey
 Constantine Maletskos
 Harold and Cynthia Mallette
 Maureen Malloy
 Peter Maltzan
 Manchester Public Library
 John and Christine Maney
 David Manley and Nancy Shorter
 Theodore Lane Manning
 Colette Manoil
 Michael March and Elizabeth Mehlin



Paul Manship's *Tortoise*, on loan to the Museum, is a favorite with young visitors.

Jeannette Marchant
 Richard and Donna Marchant
 Carleen Marchi
 Joseph Mari
 Virginia Markell
 Adah Marker
 Louise Marks and Faye Bergsman
 Anthony and Maria Marolda
 Susan Marr
 Yssabel Marren and Mark Andrew
 Margaretta Marsh
 Lee Marshall and Paul Goldberg
 Linda Marshall
 Shirley Marston
 Esther Martin and Richard Shaw
 Robert and Meredythe Martinez
 Dorothy Martins
 Jean Marzollo
 James and Judith Masciarelli
 Kat and Bob Masella
 Karen Maslow
 Connie Mason
 Barbara Maver
 Lawrence Maver
 Michele May and David Walt
 Cheryl Mazer
 Valerie McCaffrey
 Henry and Mary McCarl
 Frances McCarthy
 Kathie McCarthy
 John McClellan
 Judith McCulloch
 Kevin McDonough and Susan Lillis
 Scott and Mimi McDougal
 Paul and Catherine McGeary
 Robert McGillivray

Charles McGinn and Ann Rolland
 John and Mary Jane McGlennon
 Juliana McGovern
 Marianne McGowan and
 Rick Scaramozze
 Walter and Joyce McGrath
 Michele McHugh
 Athena McInnis
 Carol McIntyre
 Jeanie McIntyre
 Ann McKay
 Sean and Erin Mckay
 Carol McKenna
 Michael McKinnell and
 Stephanie Mallis
 John Mclaughlin
 Clifford and Carole McLellan
 Katherine McMillan
 Michael and Cynthia McNamara
 Lois McNulty
 Jane Mead
 Joseph Mechem
 Adriana Mederos and Stephen Black
 Linda Medwid
 Ted and Dee Meeker
 Robert and Mary Mehlman
 Deborah Meiselman
 Michael and Heli Meltsner
 Ruth Menicocci
 Catherine Meyers
 David Michael
 Thomas and Jo-Ann Michalak
 Walter Miller and Bernadette Carr
 Paul Miller
 Margaret Mills-Michael
 Linda Mimnaugh



Fitz Henry Lane Sunset Cruise on the *Ardelle*.

Helen Mitchell
 Patricia Mitchell
 Daniel Mituik
 Robert Monroe
 Jane Montecalvo
 Jack and Laura Montgomery
 James Montgomery and Regina Ryan
 Janet Montgomery
 John and Edith Montgomery
 Frances Moon
 Kathleen Moore
 Ruth Mordecai
 Martha Morgan and Dan Ottenheimer
 Nancy Morgan
 Veronica Morgan
 Wendy Morgan
 Jim and Kris Moroney
 John and Shirley Morris
 Kathy Morris
 Katherine Morrison and
 Richard Harvey
 Paul Morrison and Sue Lovett
 Priscilla Moulton
 Geoffrey and Barbara Movius
 Ed Mowrey
 William and Linda Mueffelmann
 Robert and Barbara Muldoon
 Kerry Mullen and Deb Hardy
 Eileen Muniz
 Chris Munkholm
 Owen Murphy and Courtney Cronin
 Avis Murray
 David and Grace Murray
 Lynn Murray
 Richard and Liz Murray
 Mark and Melanie Murray-Brown

Paul Nace and Sally Jackson
 Pia Nadel
 Amanda Nash
 Arthur Nash
 Scott Nason
 Judith Nast
 Mia Nehme
 George and Grace Neilson
 Barbara Nelson
 Deborah Nelson
 Dorothy Nelson
 Duncan and Beebe Nelson
 Hart Nelsen
 Mark Nelson and David Oliver
 Valerie Nelson
 John and Jennifer Nesta
 William and Marie Neuhauser
 Charles and Suzanne Newman
 Newton Free Library
 Elizabeth Nicastro
 Ann Nichols
 Susan Nichols
 Andrew and Catherine Nickas
 Ben Niedermeyer and
 Joanne Hidaka
 Jason Nitschke
 Carol Noble
 Joseph and Sinnika Nogelo
 Thomas and Louise Mary Nolan
 Claire Norton
 Marcia Norton
 Richard Norton
 Richard and Joyce Novak
 Matthew Nugent
 Giuseppe and Grace Numerosi
 Carlaine Ober

Rachel Oberai-Soltz and Arnold Soltz
 Gail O'Docherty
 Patricia O'Hare
 Elaine Ohlson
 Susanne Okamoto
 Faith Oker and Al Mallette
 Michael O'Leary
 Sarah O'Leary
 Michael and Susan Oleksiw
 Judith Oleson
 Mary Oliverson
 Jim and Trudi Olivetti
 Deb Olken
 Nancy Olson
 Judy O'Malley
 Margaret O'Malley
 Philip O'Neil and Lynn McWhood
 Elizabeth Susan Only and
 Sean Recroft
 Robert Oot and Carol Robey
 Robert and Frances Osten
 Bruce and Lee Osterling
 Jonathan and Deborah Ostrow
 Samuel and Elisabeth Otis
 Sydney Owens and Carl Weggel
 Beth Paddock
 Thom Padick and Joan Flynn
 Bill Palmer and Anne Robinson
 Jay and Eunice Panetta
 Bill Pappas
 Elizabeth Parillo
 Judy Parisi
 Linn Parisi
 Norma Parisi
 Christy Park
 Stephen and Lea Parson
 Gregg and Susan Parsons
 Peter Parsons
 Sandra Pascal
 Phyllis Paster
 Graham and Carol Patterson
 Nancy Patterson
 Jane Paznik-Bondarin and
 Andrew Kaelin
 Carolyn Pearce
 Sue Ann Pearson
 Beth Peer and Robert Rothstein
 David and Katherine Perkins
 Isabel Perkins
 Roy Perkinson
 Ronald and Margaret Perrin
 Candace Perry
 James Perry

Barbara Perryclear
 Georges and Carolyn Peter
 Karen Petersen
 Karin Peterson
 Marcia Faye Peterson
 Pat Petrou
 Arley and Miriam Pett
 Melody Phaneuf
 Steven Phillips and Amy Gault
 Sarah Picone
 David and Joanna Pistenmaa
 Vanesa Pliura
 Irv and Janet Plotkin
 Sarah Plows
 Janos and Kornelia Posfai
 Lucy Potter
 Jenna Powell
 Jo Kris Powell
 Keith Powers and Jacquelyn Ball
 William and Katharine Prater
 Marcey Pregent
 Ellen Preston
 Mary Alice Price
 William and Elizabeth Prickett
 Esther Proctor
 Ronald and Mimi Pruettt
 Agnes Puff
 Bob and Ann Pulver
 Hans Pundt and Lynne Sausele
 Mary Putonen
 Susan Quateman
 Marcie Rae
 Christina Rafter
 David and Christina Raimo
 John Raimondi
 Nancy Ramage
 William and Jennifer Rand
 Herb Randle
 Robert and Susan Ranta
 Eliza Rathbone
 Janet Rattray
 Catherine Rawding
 Martin and Kay Ray
 Mark and Laurie Raymond
 Marion Rayner
 Myles Reardon
 Suzan Redgate
 Theodore and Susan Reed
 Ruth Rehfus
 Jessie and Andrew Reid
 Adria Reimer
 William and Jane Remsen
 Mary Lou Reuter

Rebecca Reynolds and
 David Montgomery
 David and Ann Rhinelandier
 Frederic and Patricia Rhinelandier
 Ken Riaf
 David Rich
 Susan Richardson
 Nicole Richon-Schoel and
 James Schoel
 Elwin and Paula Richter
 Sheila Rider
 John Riley
 Thomas and Deborah Riquier
 Karen Ristuben
 Bob and Andrea Ritchie
 Heath and Heather Ritchie
 Lilian Roberts
 Bianca Robinson
 Blair and Chassea Robinson
 Lynda Robinson
 Judy Robinson-Cox
 Sarah and Junkin Rockwell
 Nellica Rodolosi
 Christopher Roe and Joanne Hurd
 Elizabeth Roland
 Barbara Rose
 James and Julie Rose
 Dale Rosen and Terry Segal
 Jeff Rosensweig
 Alan and Sue Ann Rosenthal
 Doreen Ross
 Nancy Rossi
 Alison Rowell
 Carolyn Roy
 Pauline Runkle and Robert Beurit
 Robert Russell
 Doris Rust
 Joan Ruuska
 Donald and Thelma Ryan
 Jerome Ryan
 Maureen Ryan
 Robert and Debra Ryan
 Robert and Patricia Ryan
 Geoff and Rosemary Ryding
 Charles and Jane Rzepka
 Richard and Rosella Sagall
 John Salisbury
 Patrick Salony and Christine McGrath
 Cynthia Sam
 Dianne Sampson
 James Sanford and Matthew Casey
 William Sano
 Kathleen Santo

Diane Sargent
 Dawn Sarrouf
 James and Mary Saunders
 Curtis and Betsy Sauter
 Robert and Deborah Savoy
 Mary Jane Sawyer
 Lynne Scanell
 Claire Schade Tague
 Barbara Schlichte
 John Schoenbaum and Olga Rakich
 Eric Schoonover and Susan Pollack
 Paul and Judith Schroeter
 William Schulz and Beth Graham
 Jessica Schwarzenbach and Paul Hackett
 Claudia Schweitzer
 Sally Seamans
 Barbara and Francis Sears
 Bailey See
 Roger Serbagi and Nadine Moody
 Rita Seru-Gardner
 John and Marcia Seward
 Bruce and Sandy Shaw
 Helene Shaw-Kwasie
 Karen Sheldrick
 Thomas and Anne Sherman
 Jeffrey and Marlene Shindell
 Arnold Shore and Laurisa Sellers
 Dianne Shortall
 Edward and Kaye Lynn Johnson-Shoucair
 Davina Shuman
 Charles Shurcliff
 Carol Sidlowski
 David and Christine Sidon
 Julie Sidon
 Marcia Siegel
 Dorothy Sieradzki
 Ed and Barb Silberman
 Anita Siljeholm
 Daniel and Rita Simard
 Deborah Simmerman
 Thomas and Lois Simmonds
 Richard and Priscilla Singleton
 Michael and Joan Siswick
 Marilyn Slade
 Shirlee Slater
 Bruce and Kathy Slifer
 Isabel Sloane
 Richard Sloane
 John and Betty Smallwood
 Russell and Rosamond Smith
 Eileen Smith

Sally Smithwick and Bruce Novak
 Adele Sobel
 Karen Soderberg
 Mary Soderstrom
 Wayne and Heather Soini
 An Sokolovska
 Lisa Soli and Kent Knight
 Rachel and Kate Somers
 Kathryn Soucy
 JoAnn Souza
 Thomas and Caroline Spang
 Marianne Spencer
 Newton and Judy Spurr
 Paul and Elizabeth St. Germain
 Katie St. John
 Danuta Stachiewicz
 Suzanne Stacy
 Jeremy Stahl and Judith Fleischman
 Elaine Starrett
 June Steel
 Robert Stefani
 Charles and Nancy Steiner
 Olaf and Hilary Stelling
 Jane Stempel
 John Stevens
 Laurel Stevens
 Phyllis Stevens and Allen Giles
 Craig and Hedda Stewart
 Margaret Stocker
 Jeff and Linda Stockman
 Mark Stolle
 William and Ellen Stone
 Brad and Beth Story
 Heidi Stowe
 Pamela Stratton and Kathryn Tuck
 Robert and Beverly Strauss
 John Stutz and Zoe Stewart
 Lauren Suhecki
 Dave and Maggie Sullivan
 Gerry Sullivan and Lois Dagle
 Michael and Cheryl Sullivan
 Jeff Surrette and Cathy McCarthy
 Patricia Sutherland
 Martha Swanson
 Joe and Joanna Swayze
 David and Linda Swicker
 Larry and Marilyn Swift
 Marie Swinson
 Monica Synnott
 Cori Taggart
 Elizabeth Talbot
 Robert and Holly Tanguay
 Anthony Tappé

Brent Tarr
 Frederick Tarr
 Norma Tarr
 Robin and Martha Tattersall
 Mary Taylor and Harold Burnham
 David and Rita Teele
 Ann Teixeira
 Marie Telepness
 David and Mary Thielscher
 Geoffrey and Annie Thomas
 Samuel and Elizabeth Thorne
 Josh and Genine Tillotson
 Peg Timpson
 Burton Tinker and Ruth Perrault
 Ed Touchette
 Catherine Tousignant and John Cunningham
 David Tower and Robin Hoffman
 Gerry and Polly Townsend
 Paul and Maureen Trefry
 Brenda Treuhaft
 Mary Tucker
 Robert and Joyce Tuffley
 John Tullik and Kelly McCarthy
 Amy Tuttle
 Sarah Tuvim
 Mary Tysver
 Peter Tysver
 Ted Tysver
 Diane Usewick
 James Utterback
 Constance Vallis
 Peter and Kathleen Van Demark
 Juni Van Dyke
 Allan and Andrea van Gestel
 Harriet Van Wart
 Gregory Verga
 Beverly Verrengia
 Robert and Jane Viator
 Shelley Vincent
 Christine Virden
 Anna Vojtech
 Deborah von Rosenvinge
 Dorothy von Rosenvinge
 Hazel von Rosenvinge
 Ralph and Ana Waddey
 Maura Wadlinger
 Heidi Wakeman and Coley Bryan
 Sage and Linda Walcott
 Susan Walker
 Meg Wallace and Sandy Anderson
 Jon Wallenius
 Susan Waller



Students from Endicott College's social studies methods course examine fisheries artifacts.

Alan and Sarah Ward
 Corinne Waring
 Allison Warren
 Lynne Warren-Szostek and Daniel Szostek
 Alexander and Samantha Watson
 James and Lea Watson
 Deborah Way
 Robert and Mary Weatherall
 Jeff and Kathy Weaver
 Gretchen Webster
 Kenneth Weiss
 Mary Weissblum
 Richard and Rosemary Weissman
 Minot and Lindsay Weld
 Wendy Wells
 William Wells and Arlene Hill
 Diana Welsh
 Mace and Mary Ann Wenniger
 Joseph and Inga Wennik
 Colby and Laura West
 Natalie Wheeler
 Vivian Wheeler
 Jean Whelan
 Kristen Whelan and John Rockwell
 Bruce and Anne Whilton
 Marit White
 Robert White
 Susan White
 Susan Whitehouse
 William and Deborah Whiting
 Robert Whitmarsh and Dolores Laughlin
 Terri Whitney
 Alice Whittaker
 Stephen and Betsy Whittey

Phil Wilde
 Greg and Karen Wilk
 Beth Williams
 Peter and Lynne Williams
 Beth Willis and Julie Wyman
 John Willis
 Susan Willis
 Arlene Wilson
 George and Penny Wingate
 Nannie Winslow
 David and Enid Wise
 Chuck Wisner and Kata Hull
 Nanette Witkin
 Ross and Betsy Wittemann
 Andrew and Mary Wittkower
 Frank Wolcott
 Robert and Emily Wolfe
 George and Venus Wood
 Martha Wood
 Vivian Wood
 William Wood
 Bruce and Brenda Woodbury
 Katherine Worth
 Rebekah Wostrel and Ted Coffey
 Martha Wright
 Robin and Douglas Wright
 Jim and June Wulff
 Dick York
 Bernadine Young
 Shawn and Mark Young
 Samuel and Ann Ziergiebel
 Clifton Zwirner

DONORS

The Museum gratefully acknowledges the donors who have supported the Museum with gifts this year—January 1, 2014 to December 31, 2014. A separate report on Capital Campaign giving begins on page 28.

\$100,000 +

Dorothy A. Brown

\$50,000 to \$99,999

Arthur Ryan

\$10,000 to \$49,999

Atlantis Oceanfront Inn

J.J. and Jackie Bell

Chris and Bonnie Covington

William and Ellen Cross

City of Gloucester Community Preservation Fund

Philip and Eve Cutter

Goldhirsh-Yellin Foundation, Inc.

Estate of Nancy Heberle Grayson

Peter and Gerry Herbert

Stella and Charles

Guttman Foundation

William and Janet James

Selina Little

Massachusetts Cultural Council

Richard and Donna Tadler

\$5,000 to \$9,999

Stephen and Jill Bell

John and Jan Bell

John and Mollie Byrnes

Peter and Elizabeth

C. Tower Foundation

Ted and Jan Charles

Cleveland and Ellen Cook

John and Lee Cunningham

Alec Dingee and Susan Gray

Darius and Stephanie Gaskins

Thomas and Caroline Hovey

William and Nancy Lynch

Mass Foundation for the Humanities

Margaret Pearson

George and Nancy Putnam

John Rando

Hinda Simon

Clara Wainwright

\$1,000 to \$4,999

Filiberto Agusti and Susan Whilton

Robert Amory

Jebediah Foundation

Bruce J. Anderson Foundation

Annisquam Sewing Circle

Robert and Hope Bachelder

Christine Bancheri

Mary Barcus

Walter and Gina Beinecke

Peter and Karen Bell

Mac Bell

Kermit and Glenys Birchfield

Deborah Blake

Kevin and Rosemarie Bottomley

Thomas Brooks and Karen Newman

Samuel and Rebecca Campbell

Ada Howe Kent Foundation

Richard and Deborah Carlson

Thad Carpen and Susanne Guyer

Bettie Cartwright

Robert Chandler and Ronda Faloon

Peter and Katherine Coakley

Allan and Kathe Cohen

Herb Collins

David Condino and Margaret Brady

Linzee and Beth Coolidge

Pearce and Phoebe Coues

Robert Cox and Karen Bell

Robert and Jan Crandall

Thomas and Patricia Cronin

David and Mary Dearborn

Debbie DeCotis

Chris and Jane Deering

Ronald Druker and Julie Freedman

Kenneth and Alice Erickson

Peter Feinstein and Miriam Weinstein

Deborah Freeman

John and Kathy Galligan

Ian and Josie Gardiner

Henrietta Gates and Heaton Robertson

John Glovsky

Robbins Nest Foundation

Mark Glovsky and Olivia Cowen

Amnon Goldman and Mary Ball

Sarge and Susan Goodchild

Tamara Greeman

Garth and Lindsay Greimann

Carl and Judy Gustin

Jack Haley

Katharine Hamilos

James Hand

Jerry and Margaretta Hausman

William and Rose Hausman

Jim and Mary Hayes

Mary Healy

Harry and Mary Hintlian

Robert and Pamela Irwin

Stephen and Missy Kasnet

Patricia Kerstein

Christine Kinney and Bill Siderewicz

Catherine Lastavica

Nancy LeGendre and Walter Herlihy

Paul and Jackie Littlefield

Ann Lord

Fred and Jill Lovejoy

Joan Lovejoy

Paul and Christine Lundberg

Doris Lynch

Marietta Lynch

Elton and Connie McCausland

John and Mary Ann McCormick

Ann McDonald

Daniel and Jenifer McDougall

Roger and Carol McNeill

Kurt and Therese Melden

Henrietta Meyer

Richard Mills and Amy Bell

Amy Moore

Christine Moore

Jon and Carol Morse

Joseph and Eileen Mueller

Lee Natti

Greg and Stevie Neal

John and Pam Newberry

Peter and Charleen Onanian

John and Sarah Hollis Perry

Susan Pollack and Eric Schoonover

Kanter Kallman Foundation

Ronald and Mimi Pruett

George and Kathy Putnam

Judson and Lisa Reis

Howard and Joan Resnikoff

David and Lisa Rich

Carlos and Diane Riva

Joseph and Maggie Rosa

Richard and Anne Rosenfeld

Roger Salisbury and

Judith Monteferrante

Stuart Scantlebury and Lecia Turcotte

Buzz and Lorraine Schulte

Jack and Shelagh Schylling

Tim and Christy Sheehan

Thomas and Lyn Shields

Jack and Judy Shields

Leslee Shlopak

Andrew Spindler and Hiram Butler

Campbell and Grace Steward

Peter and Lynda Surdam

Ingrid Swanson

Lynn and Joan Swigart

William and Jolinda Taylor

David Tyree and Emily Bell

Ernst and Gail von Metzsch

Linda Walker

Michael and Tee Wall

David and Mary Warner

Peter and Thi Linh Wernau

Matthew Whitlock and Penny Neal

Peter and Winifred Whitman

Clive Wood and Stella Martin

Tom and Kristin Zarrella

Charles and Margaret Ziering

\$500 to \$999

Stefan and Barbe Abramo

Robert Ackerman

John Bacon

Duncan and Mara Balsbaugh

Geoffrey Bayliss

David and Lida Bernard

Allan and Phyllis Bezanson

John and Cynthia Bjorlie

George and Rose Bottger

Thomas Burger and André Robert

Anne Babson Carter

Hugh and Joan Collier

Nathaniel and Catherine Coolidge

Albert and Hilary Creighton

Jack and Betty Davis

James and Sharon Deveney

John Easton and Sem Sutter

Robert and Surrey Elwell

Robert and Mary Emmons

Adele Ervin

Ann-Margaret Ferrante

Karl Frank

Marion and Martha Frost

Justin and Kari Gale

Howard and Naomi Gardner

Tom and Beverly Gillette

Rose Marie Glen and Clare Bromley

John and Andrea Glovsky

Michael and Karen Gorton

Nathaniel and Jodie Gorton

Richard and Joan Gross

Christopher Hadley and Scott Smith

Douglas and Susan Hall

James and Leslie Hammond

David and Michele Harrison

Samuel and Betsy Holdsworth

Charles and Judith Hood

Stephen and Christine Kahane

Eileen Kelley

Chris and Sue Klem

Peter and Karen Koch-Weser

Jan Koch-Weser and Diane Chen

Stephen and Sigrid Lindo

Angus and Leslie Littlejohn

Sheila Lummis

Robert and Eileen Matz

Barry and Carol Mawn

John and Mary Jane McGlennon

Craig and Lillian Olmsted

David Olsen

David Porper

Frank and Ellen Previte

Christopher and Esther Pullman

Anthony and Clare Quinn

John and Jean Rees

William and Jane Remsen

James and Julie Rose

Michael and Patty Rosenblatt

Robert Russell

Patrick Salony and Christine McGrath

Donald Saunders and Liv Ullmann

William Schulz and Beth Graham

James and Martha Smeallie



The Sixth Annual Women's Luncheon.

Stephen and Lisa Smit
 Trina Smith
 Steve and Linda Sojda
 Rebecca and Mark Sorensen
 Eileen Sporing and Jocelyn Ramella
 David and Fenton Stirling
 Annie Storr
 Nancy Strisik
 Betty Tai
 Howard and Betty Thomas
 Linda Tosi and Howard Burkholder
 Gerry and Polly Townsend
 David Tufts
 Yuri Tuvim and Mary Louise Giuliano
 Michael and Candace Wheeler
 Alan Willsky and Susanna Natti

\$250 to \$499

Robert and Peg Anderson
 Norma Andrews
 Bonnie Angus
 John and Sarah Appleton
 Gordon Baird and JoeAnn Hart
 Devereux and Jilda Barker
 James and Chris Barker
 Ed and Sheila Becker
 Beate Becker-Vavak and
 Stephen Vavak
 Selma and Leslie Bell
 Peter and Joyce Bergholtz
 Lewis and Miriam Braverman
 Elana Brink
 Ralph and Elizabeth Browning
 John and Kate Cabot
 George and Judy Carter
 James Clyde
 Christopher and Lisa Collins

Diana Connors
 Martin and Natalie Daley
 George Davis and Lisa Bonneville
 David and Katherine Davis
 Patricia Donahue and Greg Sacca
 Deborah Eliason
 Albert Ellis and
 Anne Seymour-St. John
 Charles and Caroline Esdaile
 Michael and Mona Faherty
 Diane Faissler
 Adam and Nina Fieldsteel
 Ronald and Eleanor Fleet
 Elizabeth Fragola and
 Nicholas Senzamici
 Elisa Fredrickson
 Jack and Susan Gardner
 Jonas Gavelis and Bonnie Sylvester
 Michael Gerstein and
 Katherine Mierzwa
 Philip Goldsmith and Melissa Boshco
 Mark and Janet Gottesman
 Mark Grebbin
 Louise Grindrod and Robert Paterson
 Jane Harris
 Harvard Club of the North Shore
 Robert Henriques and Jane Singer
 Benjamin Herbert
 Bruce and Meg Herman
 Harry and Judith Hoglander
 Ken and Billie Hruby
 John and Sally Huss
 Karen Johnson
 Jonathan Katz and Norah Wylie
 Tom and Maryanne Kiely
 William and Anne Kneisel
 Peter and Bobbi Kovner

Stephen and Janet Langer
 Peter and Sandy Lawrence
 Mark and Martha Morgan Lindsay
 Michael Lipton and Catherine Bayliss
 Daniel and Marcy Lyman
 Jane Lyman
 David and Louise Marsh
 James and Dorothy Matthews
 William and Jane McConnell
 Scott and Mimi McDougal
 Susan McKain and Ken Steiner
 Jay McLauchlan and Sara Stotzer
 Fern Miller
 Elaine Mosesian
 Sarah Mowitt
 Peter Mowschenson and
 Nadine Berman
 Walter and Linda Murphy
 Charles Nazarian
 Leslie Nicholson
 Ronald Nickerson
 John and Jane Olson
 Jo Kris Powell
 Robert and Ann Pulver
 Robert and Susan Reece
 Edward Reither and Liisa O'Maley
 David and Ann Rhineland
 Benjamin and Courtney Richardson
 Leanne Robinson
 Dale Rosen and Terry Segal
 Stephen and Kit Rosenthal
 Stephen and Janet Ulwick Sacca
 Russell Sandfield and Sabine Ralston
 Edward and Barbara Silberman
 Stephen and Rachel Silver
 David and Ann Simmons
 Richard and Priscilla Singleton
 Lisa Smith
 Rebecca Smith
 Russell and Rosamond Smith
 Lisa Soli and Kent Knight
 David and Ginni Spencer
 Carol Stearns
 Matthew and Sarah Swift
 Joyce Thomas
 Patrick Thomas
 Josh and Genine Tillotson
 Ed Touchette and Mary Healy
 Juni Van Dyke
 Allan and Andrea van Gestel
 Douglas and Priscilla Viets
 Robert and Margaret Wallis
 Katherine Walters

Stephen and Anne Warhover
 Cornelius Waud
 Christopher and Susannah Weld
 Richard and Deirdre White
 Ted Widmer and Mary Rhineland
 George and Penny Wingate
 Sib and Judy Wright
 Edward Zuker and Judi Rotenberg

\$100 to \$249

Jerry and Carol Ackerman
 Ray Agler and John Carter
 Elizabeth Akerley
 Edward and Mary Anderson
 Gail Anderson and Bill Effner
 Kennon Anderson
 Robert and Judy Anderson
 William and Yvette Anderson
 Sandra Andrews
 Alison Anholt-White
 Rory and Jean Ancombe
 Nan Araneo
 Rodney and Kitty Armstrong
 Mark and Judy Arnold
 Michael Avallon and Michael Gendre
 Judith Avery
 David and Val Babson
 Thomas and Shiela Baker
 Ann Banks
 Vinse and Carlene Barrett
 Mary Barthelmes
 Kenneth and Helen Beal
 JoAnn Beck
 David and Sally Benjamin
 Geoffrey and Martha Bentley
 Edward and Linda Berger
 Gottfried and Karen Berger
 Maureen Berkley
 Barbara Beyea
 Charlotte Bishop
 Barbara Bjornson
 Dale Blank and Tom Fox
 Louise Blodget
 Rick Blue and Lindsey Crouse
 Judith Bly and Abraham Newman
 Brian Bones
 Mr. and Mrs. Robert Borden
 David and Maureen Bovet
 John and Jane Bradley
 Sally Bradshaw and Dottie Murkland
 Bruce and Joan Bradshaw
 R. Billings Bramhall
 Peter Brau and Bethany Fritzsche

Patricia Bridgeman
 Stephen and Dicsee Bridges
 Chester and Anthea Brigham
 Isabelle Brown
 Mike and Betsy Brown
 Mr. and Mrs. Robert Brown
 Thomas and Mimi Brown
 Lois Brynes and Serena Hilsinger
 Joan Buchanan
 Bill and Gerrie Butman
 Ann Byers
 Samuel and Claire Cabot
 Josh and Christina Cahill
 Jim and Charlene Callahan
 Janice Cane and Walter Hess
 Randy Carr and Gabrielle Barzaghi
 Donna Caseldon
 Robert Cashman and Lynn Browne
 James and Judith Caulkett
 Suzanne Cervo
 Philip Chalmers and Susan King
 Brad Chisholm and Gail Smith
 Nathaniel and Hester Clapp
 Chester and Ellen Clark
 Frances Colburn
 William and Betsey Colby
 Donald and Linda Comb
 John and Polly Connors
 Peter and Connie Corbino
 Angela Corning
 Mike Costello
 Chris Counihan and Eleanor Marks
 Fara Courtney and Jack Clark
 Evelyn, Barbara and Judy Cox
 Robert Coyne
 Ray and Monica Crane
 Don and Marge Cregg
 Lawrence and Amelia Crimmins
 Robert and Jennifer Culbert
 Frank Cunningham and Anne Black
 Henry and Judith Curtis
 Arthur and Julie Daniels
 Starr Daniels
 Brian and Debra Darby
 Chandler and Nancy Davis
 Priscilla Deck
 Stephen and Marta Deely
 Craig and Laurel Deery
 Michael and Jacqueline DeFalco
 Frank and Louisa Deland
 Charlene Delaney
 Robert and Ann DeMaine
 Charlesanna Detra

ALFRED MANSFIELD BROOKS SOCIETY

Alfred Mansfield Brooks (1870–1963), long time president and curator of the Cape Ann Museum, was responsible for assembling what would ultimately become the largest and finest collection of works by marine artist Fitz Henry Lane (1804–1865). Today, the Museum's Lane Collection includes over 40 oil paintings and more than 100 pencil drawings. The fact that such a comprehensive group of works has remained in the artist's hometown is remarkable, a testament to Brooks' vision and foresight.

The Alfred Mansfield Brooks Society was established in 2009 to honor the generosity of Robert L. and Elizabeth French and their gifts to the Museum's collection and to serve as an acknowledgement of gratitude to the long line of donors who have shaped the Museum's collection. The Society recognizes those who have made donations of art or artifacts to the Museum, who have pledged a future gift, or who have provided funds for the purchase or conservation of such at a minimum of \$10,000 on or after September 2009.

Raymond Agler and John Carter	William and Janet James
Robert Amory	Joan Klimann
Jebediah Foundation	Estate of Richard E. Kuehne
Willard and Linda Andrews	Ninon Lacey
J.J. and Jackie Bell	Milt and Helen Lauenstein
Diana Bell	Paul Lohnes
John and Jan Bell	Walter Manninen
Karen Bell	Alfred Mayor
Timothy F. Bell	Dan and Jenifer McDougall
Kermit and Glenys Birchfield	John and Mary Jane McGlennon
Estate of Dorothy A. Brown	Joseph Mesquita
Diane Chen and Jan Koch-Weser	Hugh Morton
Cleveland and Ellen Cook	Manton Foundation
Linzee and Beth Coolidge	Estate of Anna Crouse Murch
Bill and Ellen Cross	Estate of Anne H. Oaks
Ronald and Joan Curhan	Margaret Pearson
Jonathan and Louisa Fairbanks	Susan Pollack and
Kristine Fisher and	Eric Schoonover
Richard Crangle	Rebecca Reynolds and
Jonathan French	David Montgomery
Peter and Annette French	Blair and Leanne Robinson
Ian and Josie Gardiner	Arthur Ryan
Helen Garland	Stephen and Virginia Sandy
Myra Hall and James Tolman	Martha Smith
James Hand	Kristi Stangeland
Bruce and Meg Herman	Ingrid Swanson
Cindy Holloran	William and Roswitha Traves
Jim Hooper	Clara Wainwright



Steve and Dawn Dexter
 Anita Diamant and Jim Bell
 Steven Dieck and
 Hatsumi Miura
 Richard Douglas
 Francis Duehay and Jane Lewis
 William and Jean Dugan
 Pat Dumas and Esther Joyce
 Sarah Dunlap
 Sue Durkin
 William and Deborah Ebeling
 Hilly and Cathy Ebling
 Carleton and Virginia Ekborg
 John and Kaye Ellis
 Dominic and Tamsen Endicott
 Susan Erony and Jay Jaroslav
 Edward Everett
 Ronald and Sandra Faloon
 Jay and Helen Featherstone
 Mary-Louise Fennessy
 Mary Fillman
 William Finch and Carol Rose
 Guy and Andrea Fincke
 Josiah Fisk
 Audrey Fraser and Richard Stoloff
 Paul Frazier
 Linette French
 Terry and Elizabeth French
 William and Judy Friend
 Carolyn Fuchs
 John Fuller
 Charles and Jane Gardiner
 David Gardner
 Frank and Janet Garrison
 Nancy Garvey
 Dody Gates
 Joseph and Catherine Geary
 Kecia German
 Greg Gibson and Anne Marie Crotty
 Robert Gillis and Pixie Harrington
 Charles Gladstone and Elaine Souza
 Tracy Gleckner and Don Rittenburg
 Lia Glovsky
 Blake Godbout and
 Paula J. DeGiacomo
 Gordon and Judith Goetemann
 Ruth Goodick
 Leonard and Cheryl Goodman
 Barbara Greenberg
 Joyce Griffin
 Gary Griffin and Leslie Pearlman

Paul Gross and Cornelia Tenney
 James and Katherine Groves
 Lauren Gudonis
 Henry and Gail Guild
 Robert and Judith Gwozdziejewicz
 Robert Hall
 Tom and Joy Halsted
 Elisabeth Harding
 John Harrington and
 Deborah Marston
 Andrew and Katharine Harris
 Stephen and Susan Harris
 Jonathan and Margaret Harvey
 John and Andrea Hauck
 Bill and Joy Hennessey
 Toby Higgins
 Brian and Kathy Hines
 Nick and Debe Holland
 Peter Hornbeck and Martha Leven
 Paul and Betsey Horovitz
 Charles and Nancy Hovey
 Stephen and Jeanne Howard
 Ann Hurd and John Rodenhiser
 Claire Hurst
 Robert and Patricia Jedrey
 Peter Jenner and Carolin Catalano
 Brian and Paula Jerome
 Bruce Jones and Tina Cross
 Carol Judd
 David and Meredith Kantor
 Beverly Quint Kaplan
 Gillian Kellogg
 Phyllis Kerr
 Cliff King and Catherine Ryan
 Carolyn King
 Earl and Sharon Kishida
 Jerome and Linda Klein
 John and Janet Koza
 Miles and Joan Kulukundis
 Ninon Lacey
 Thomas and Grace Lattof
 Milt and Helen Lauenstein
 Carolyn Lawler
 Martha and Robert Lawrenz
 John and Martha Lazarus
 Geoffrey Leahy
 Patricia Leary
 Michael and Nancy Leavitt
 Lysa Leland
 Janet Lepanto and Richard Metzinger
 Kathleen Lieser

Brooks Lobkowitz
 Richard and Pamela Loomis
 Rose Mary Loring
 Elizabeth Lovejoy
 Margaretta Lovell
 Beverly Low
 Peter and Elaine Lucas
 Fitz and Marianne Lufkin
 Nancy Lui-Kwan
 Abbie Lundberg
 Matthew and Rosemary Lundberg
 David Manley and Nancy Shorter
 Thomas and Ann Mannle
 Michael March and Elizabeth Mehlin
 Bob and Nancy Marculewicz
 Joseph Mari
 Yssabel Marren and Mark Andrew
 Jill Marshall
 Esther Martin and Richard Shaw
 John and Ethel Martin
 Rob Martin and Trish Roach
 Alex and Julie Mattera
 Roy and Shelagh McCauley
 Dennis McGurk
 Donna McIntire
 Jeanie McIntyre
 Sean and Erin Mckay
 Robert McPhail and Susan Guest
 Ted and Dee Meeker
 Merritt and Linda Miller
 Carl and Shirley Moores
 Martha Morgan and
 Dan Ottenheimer
 T. Lincoln and Mary Lou Morison
 Dan and Beth Morris
 John and Shirley Morris
 Katherine Morrison and
 Richard Harvey
 Paul Morrison and Sue Lovett
 Eben and Heather Moulton
 Hart Nelsen
 Deborah Nelson
 Andrew and Catherine Nickas
 Thomas and Louise Mary Nolan
 Beth Noyes
 Jean Baer O'Gorman
 David and Janet O'Hara
 Elizabeth Olson
 Kevin and Emily O'Malley
 Jerrold Oppenheim and
 Theo MacGregor

Walker Hancock (1901-1998). *Alfred Brooks Memorial Sundial*, 1967. Bronze. Gift of the artist, 1967. [2012.67]

Samuel and Elisabeth Otis
 Leonard Parco
 John and Olivia Parker
 Kate Parsons
 Davis and Deborah Pearce
 Chris and Jane Phillips
 George and Joann Phillips
 Katherine Pickering
 Ralph and Kathleen Pino
 Paul andCarolynn Pitman
 Ted and Kathy Pomfret
 William and Katharine Prater
 Stuart and Beth Pratt
 Mary Quinn
 Christina Rafter
 Bob and Jan Randolph
 Mark and Laurie Raymond
 Frederic and Patricia Rhinelander
 Elizabeth Rhinelander and
 Peter MacEwen
 George and Daphne Roark
 Blair and Chassea Robinson
 Harold and Linda Rogers
 John and Sandy Ronan
 Bruce and Jane Rosenberg
 Melvin and Martha Rosenblatt
 William and Susan Ross
 Ron Ross and Mary Benham
 Nancy Rossi
 Albert and Cynthia Roth
 Dick and Olga Rothschild
 Ned and Susie Rowland
 Paul and Barbara Russell
 Donald and Thelma Ryan
 Jeffrey and Christa Sammons
 William Sano
 Robert and Deborah Savoy
 Bart and Nancy Schick
 Claudia Schweitzer
 Claudine Scoville
 Paul and Dona Shea
 Judy Shipman
 Paula Shorts
 David and Christine Sidon
 Joan Sindall and MacGregor Freeman
 Marilyn Slade
 Angus Smith
 Mark and Wendy Smith
 Val and Evelyn Somers
 Richard and Joann Southgate
 Frank and Jeanne Speizer
 Newton and Judy Spurr
 Paul and Elizabeth St. Germain

Suzanne Stacy
 Jim and Kate Stavis
 Charles and Nancy Steiner
 Bob and Carolyn Stewart
 Craig and Hedda Stewart
 Jeff and Naomi Stonberg
 William and Ellen Stone
 Heidi Stowe
 Judith Strohm
 Donald and Phyllis Sudbay
 Robert and Cyndy Tallett
 Robert and Holly Tanguay
 Mary Taylor and Harold Burnham
 Geoffrey and Annie Thomas
 Noel and Judith Thyson
 Bruce and Pat Tobey
 Catherine Tousignant and
 John Cunningham
 John Tullik and Kelly McCarthy
 U.S. Lighthouse Society
 Peter and Kathleen Van Demark
 Regina Villa
 Oliver and Ellen Wadsworth
 Natalie Wainwright
 Edward and Eva Walker
 Graham and Jan Walker
 Alan and Sarah Ward
 Allison Warren
 Barry and Susan Weiner
 James and Virginia Welch
 John Westerberg
 Anthony and Joreen White
 Robert Whitmarsh and
 Dolores Laughlin
 Stephen and Betsy Whittey
 Duncan and Kimberly Wilkinson
 John Willis
 Fritz and Peggy Willmann
 Patrick Wilmerding
 Heidi Winslow
 Nannie Winslow
 Oliver and Carolyn Wolcott
 Peter Wolfskehl and Gail Sarofeen
 Bruce and Brenda Woodbury
 Rosemary Wywoda
 Jason and Margaret Zorfas

 UP TO \$100
 Shep Abbott
 Phyllis Akillian
 Nubar Alexanian
 Francis and Rebecca Aliberte
 Herbert and Catherine Allard

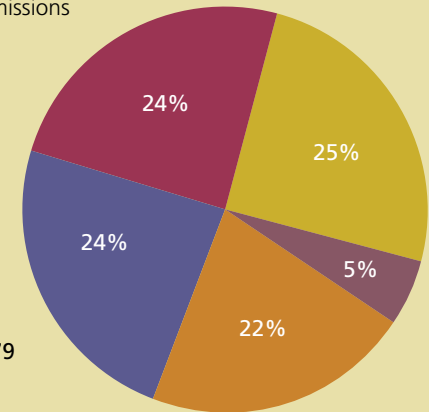
Lawrence Allen and Marcia Lindsey
 Allen County Public Library
 Eric and Monica Allon
 Lois Alves
 Linda Amero and Hank Turgeon
 Anna Andella
 George and Jean Anderson
 Eben and Sandy Andrew
 Thomas and Nancy Andrew
 Willard and Linda Andrews
 Kathleen Archer
 David Archibald and Marion Phipps
 Joanne Avallon and Kurt Ogle
 Merribel Ayres
 Isobel Baade
 Jim and Kathy Bacsik
 Will and Susan Baldwin
 Tom Balf and Donna Heaney
 Nancy Balf
 Larry Bankart and Marilyn Mercer
 Phyllis Barnett
 Cynthia Barrett and Carey Hodges
 Gregory Bartlett
 Teresa Basler
 John Bassett and Christina Wolfe
 Anna Baumgaertel
 Joe Bayes and Lynda Goldberg
 Ann Baylies
 Peter and Janice Beacham
 Mary Beck and Wilma Busse
 David and Jane Beddus
 John and Ann Berges
 Susan Berry
 Anthony and Patricia Bertolino
 Deborah Beveridge
 Bradford Bigelow
 Deborah Bird
 Jack Bishop and Susan Hand
 Jody Blagdern
 Sheila Blake
 James Blanco
 Marie Blanding
 Bernice Blitz
 Dale and Alden Blodget
 Alan Blummer and Jill Goldmon
 Christine Bobek
 Frank and Leslie Bordonaro
 Robert Bosselman
 Linda Bource
 Barbara Brackett
 Judith Brackley
 Suzanne Brailey
 Peter and Linda Braun

Summary of Operating Revenue and Expense

This is not a complete financial statement. A complete, audited financial statement is available upon request. Capital Campaign receipts and expenditures are not included in this summary.*

INCOME

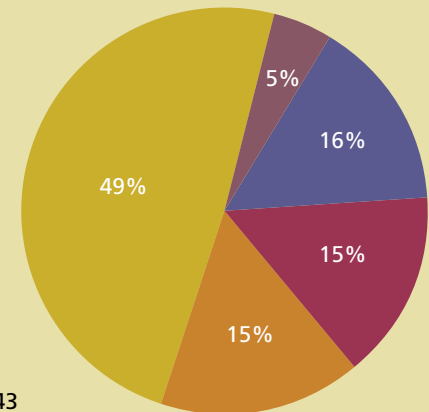
- Membership and Admissions
\$278,568
- Investment Income
\$274,953
- Donations
\$267,539
- Programs and Shop
\$242,154
- Grants and Bequests
\$60,465



TOTAL INCOME \$1,123,679

EXPENSE

- Payroll
\$577,238
- Administration
\$188,110
- Programs and Shop
\$179,708
- Building Services
\$178,700
- Collections
\$58,087



TOTAL EXPENSE \$1,181,843

*The Museum was closed from January 2014 through mid-August 2014 due to a major renovation.



\$2,500 to \$9,999

Cape Ann Savings Bank
Cell SignalingTechnology

\$1,000 to \$2,499

Ambient Temperature Corporation
Bomco, Inc.
Building Center
Cape Ann Marketplace
Carroll Steele Insurance Agency, Inc.
Elizabeth Clement Fine Arts
Gorton's Seafood
KVAssociates, Frank Vanzler
Mercury Gallery
Nor'East Cleaners
Timothy S. Hopkins Catering
Women on the Move, LLC

\$500 to \$999

Atlantis Oceanfront Inn
Cricket Press, Inc.
Essex Alarm and Security, Inc.
Sonolite Plastics
Timberline Enterprises
W. Herbert Goodick, Inc.

\$250 to \$499

Cape Ann Insurance Agency, Inc.
Defalco Painting Company
Glovsky & Glovsky, LLC
Hershey Frame Shop
Olson Lewis + Architects
Pasquina Law Office
Rockport National Bank
Vista Motel, LLC

Up to \$250

Again and Again
BankGloucester
C.B. Fisk, Inc.
Coldwell Banker
Deborah Coull Salon
Ennis, Inc.
Glover's Floor Covering, Inc.
Hecht Development
Ocean Alliance
Pulsifer & Associates
Red Dory Productions
Sparx Cubed, Inc.
Sue Henderson Ed Consulting
Trident Gallery

MATCHING GIFTS

Fiduciary Trust Company
Gorton's Seafood
Merrill Lynch Wealth Management/Bank of America
NSTAR Foundation
Verisk Analytics

James T. McClellan (1910-2005), *Seahorse*, c. 1970s, carved wood with gold patina. Gift of the artist.

Alan and Barbara Braver
Donald and Katherine Breen
Lise Breen
Barbara Brewer
Linda Briggs
Lois Bronnenkant
Doug and Cassie Brown
Jane and Laura Brown
Jeffrey Brown and Kathryn Corbin
Katherine Brown
Shepard Brown and Elisabeth Simonds
Martha Brox
William and Barbara Bruns
Richard Bucci
Carolyn Buckley
Mary Burgarella
Angela Burke and Jane Burke-Miller
Charles and Maria Burnham
Ross Burton
Joseph Butler and Nancy Davis
Paula Bzdula
John Caggiano
Douglas and Sarah Caraganis
Jonathan and Jill Carey
Mark Carlotto
Steven Caron and Betty Bouchard
Marty and Susan Carriker
Holly Cavanaugh
James Chadbourne
Scott Channell
Karen Chellquist
JoAnne Chirico
Angela Ciaramitaro
Carroll Clark
Elaine Clark
Gail Clifford
John and Bayard Cobb
Margaret Coe
Dave and Sharron Cohen
Ashley Cole
Dorothy Cole
Bob and Sally Collini
Pat Collins
Cynthia Conant
Patricia Conant
Lorna and Patricia Condon
Gretchen Contrino
Jon and Geri Corbino
Nancy Corral
Kathryn Costa
Deborah Cowan
Frederick Cowan and Richard Gardner

David Cox
Kitt and Theresa Cox
Maurice Coyle and John Giuccio
Kathryn Craig
Paul and Carol Craig
Bonnie Crane
Stephen and Mary Craven
Robert and Ruth Crocker
Kathy Cross
Jennifer Cullen
Torrance Cullen
Damon and Melissa Cummings
Frank and Virginia Curcio
Patricia Dackert
Jennifer Dahlgren
James and Patricia Dalpiaz
Susan Daly
Carl and Mimi Darrow
Brenda Davis
Donna Davis
Charles and Barbara DeCoste
Darryl DeTorchio
Virginia Dench
Bruce and Veronica Devon
Dean Dexter
Judith Diamond
Brenton and Elizabeth Dickson
Vicki Diez-Canseco
Genevieve Dionne
Herold and Mary Ann Doherty
Ariane Doud
Kathy Downer
Janice Downey
Barbara Drake
Henry DuLaurence and Paula Carnelli
JP and Andrea Dunn
Mary Duran
Donna Dussault
Karen Dyer
Thora Easton
Carolyn Edwards
John and Janet Egan
Susan Elliot
Gary Emmer
Elizabeth Enfield
John and Betty Erkkila
Peter and Jan Eschazier
Mary Ann Esdaile
Jack Evans
Lynda Fatalo
Beverly Feinberg - Moss
Bill and Lyn Fenollosa

Prudence Fish
Christian Fisher
Kristine Fisher
Francis Fitch
Lyn Fitzgerald
Richard and Diane Foley
Tamasin Foote
Gregg and Martha Fox
Tom Fraser
Anita Freeman and Phillip Albright
Joel and Jennifer Fremont
Marion Fremont-Smith
Katherine French
Christen Frothingham
William and Bonnie Gale
Jack Gale
Roger Garberg and Marion Sibley
Michael and Sarah Garcia
David and Alice Gardner
Deborah Gardner
Lynda Gardner
Julia Garrison and Andre Beaulieu
Gerry and Eloise Gehr
Myron and Eileen Geller
Cornelia Gephart
Anthony and Margorie Giannelli
Janet Giarrusso
Paul and Valerie Gilman
David and Regina Girard
Jeffrey Glaser
Tony and Samantha Goddess
Rosaly Gold
Beth Goldberg
Curtis Gollrad and Dale Brown
Jennifer Goodman
Bonnie Goodwin
Carmine and Joan Gorga
Dick and Connie Gourdeau
John and Rebecca Graham
Carol Gray
Mary Grazen-Browne
David and Janet Grey
Johana Griffith
Richard Guarrasi
Margaret Guest
Gail Guittarr
Catherine Gunn
Janis Guter
Sarah Hackett
Myra Hall and James Tolman
Laura Hollowell
Isabella Halsted
Michael Hamill

Ruth Hamill
Hamilton-Wenham Public Library
Ed and Susan Hand
Harriet Harding
Edward and Jackie Hardy
Buck Harris and Cathy Palmisano
Carolyn Harris
Edward Hart and Anita Robboy
Katrina Hart
John and Grace Harvey
John and Ruth Hautala
Laurence and Laura Hawkins
Leslie Heffron
Richard Heuser
Hazel Hewitt
Bonnie Higgins
Sheila Higgins
John Hinckley
Yvette Hochberg
Per and Ana Hoel
Anna Hogan
Susan Holden
Herb and Meg Hollender
John and Elizabeth Holmberg
William and Lynne Holton
Sarah Honenberger
Israel and Gillian Horovitz
Jay and Louie Howland
Eleanor Hoy
Jack and Betty Hubbard
Debby Hughes
Amanda Hurd
Daniel and Priscilla Hurley
Jill Hurley

Coralie Ingraham
Nancy Ives
William Jackson
Taylor Jantz-Sell
Emily Jay
Ray Jenness
Melissa Jeswald
Ann Johnson
Cynthia Johnson
Janice Johnson
Mayo and Julie Johnson
Margaret Justice
Suzy Kadiff
Vladislav and Marina Kasarda
Reed Kay
Barbara Kelley
Deborah Kelsey
Richard and Randolph Kelts
Gail Kennedy
Laura Kerr
Michael and Fiona Kerr
Kirsti Kettunen-Belle
Melissa Keys
Peggy Kimball
Elizabeth King
William and Nancy Kingman
Jen Kirk
John and Lois Knaus
Laurence and Annette Knight
Paula Knuuttunen
Neil Kobrosky and Linda Gipstein
Mary Jane Kornacki and Jack Silversin
Lee Kowalski
Bruno and Barbara Kozel

Norman Krause
David Kriebel and Margaret Quinn
James and Bette Jean Krieger
Charles and Eileen Kronauer
Sue Kuendig
Raymond and Pamela Kuras
Lise and Jens Kure-Jensen
Martha Kurz
Peter and Elaine Kuttner
Mark Lacey and Susan Fehrmann
Mark Laliberte
Elsie Landergren
Ramona Latham
Joseph and Karolina Latronica
David Leach
Christopher and Kathryn Leahy
Brenda LeClerc and Laurel Seneca
John LeJeune and Mary Donovan
Peter and Roxanna Leone
Lucille LePage
Mary Ellen Lepionka
Sandra Lepore
Carol Linsky
Maryjane Long
Deborah Loomis
Richard Lord
Jon and Lucy Loring
William and Agnes Loring
Scott Lovasco
Jim and Laura Lowell
Deborah Lucas
Beth Luchner and Jeffrey Berman
Sash Ludwig and Craig Dulong
Robert Luffin
Susan Lyons
Linda Mahajan
Edward and Norma Mahoney
Donald Maier
Bruce Maki and Ann Piette
Manchester Public Library
Theodore Lane Manning
Colette Manoil
Jeannette Marchant
Virginia Markell
Louise Marks and Faye Bergsman
Anthony and Maria Marolda
Susan Marr
Mitzi Marsh
Lee Marshall and Paul Goldberg
Linda Marshall
Robert and Merydythe Martinez
James and Judith Masciarelli
Kat and Bob Masella

Karen Maslow
Connie Mason
Barbara Maver
Lawrence Maver
Cheryl Mazer
Valerie McCaffrey
Henry and Mary McCarl
Paul and Catherine McGearry
Robert McGillivray
Charles McGinn and Ann Rolland
Marianne McGowan and
Rick Scaramozze
Walter and Joyce McGrath
Athena McInnis
Ann McKay
Michael McKinnell and
Stephanie Mallis
John McLaughlin
Clifford and Carole McLellan
Katherine McMillan
Michael and Cynthia McNamara
Lois McNulty
Jane Mead
Natalie Medici
Robert and Mary Mehlman
Deborah Meiselman
Michael and Heli Meltsner
Catherine Meyers
David Michael
Walter Miller and Bernadette Carr
Margaret Mills-Michael
Linda Mimnaugh
Helen Mitchell
Patricia Mitchell
James Montgomery and Regina Ryan
Frances Moon
Kathleen Moore
Ruth Mordecai
Veronica Morgan
Wendy Morgan
Jim and Kris Moroney
Kathy Morris
Priscilla Moulton
Geoffrey and Barbara Movius
Ed Mowrey
William and Linda Mueffelmann
Robert and Barbara Muldoon
Chris Munkholm
Avis Murray
Lynn Murray
Scott Nason
Mia Nehme
Barbara Nelson

Dorothy Nelson
Valerie Nelson
John and Jennifer Nesta
William and Marie Neuhauser
Charles and Suzanne Newman
Newton Free Library
Elizabeth Nicastro
Susan Nichols
Ben Niedermeyer and Joanne Hidaka
Jason Nitschke
Joseph and Sinnika Nogelo
Marcia Norton
Richard and Joyce Novak
Matthew Nugent
Carla Ober
Betty Odabashian
Gail O'Docherty
Elaine Ohlson
Susanne Okamoto
Faith Oker and Al Mallette
Michael O'Leary
Michael and Susan Oleksiw
Judith Oleson
Jim and Trudi Olivetti
Nancy Olson
Philip O'Neil and Lynn McWhood
Elizabeth Only and Sean Recroft
Bruce and Lee Osterling
Beth Paddock
Jay and Eunice Panetta
Linn Parisi
Gregg and Susan Parsons
Peter Parsons
Sandra Pascal
Graham and Carol Patterson
Martha Peer and Robert Rothstein
David and Katie Perkins
Isabel Perkins
Roy Perkinson
Ronald and Margaret Perrin
Candace Perry
Karen Petersen
Marcia Faye Peterson
Pat Petrou
Arley and Miriam Pett
Melody Phaneuf
Sarah Picone
Irv and Janet Plotkin
Sarah Plows
Janos and Kornelia Posfai
Keith Powers and Jacquelyn Ball
Ellen Preston
Mary Alice Price



The 2014 Business Luncheon aboard the *Beauport Princess*.

Will and Elizabeth Prickett
Esther Proctor
Agnes Puff
Hans Pundt and Lynne Sausele
Mary Putonen
Susan Quateman
Marcie Rae
David and Christina Raimo
John Raimondi
Nancy Ramage
Bill and Jennifer Rand
Herb Randle
Robert and Susan Ranta
Janet Rattray
Martin and Kay Ray
Marion Rayner
Suzan Redgate
Ruth Rehfus
Andrew and Jessie Reid
Adria Reimer
Mary Lou Reuter
Rebecca Reynolds and
David Montgomery
Ken Riaf
David Rich
Susan Richardson
John Riley
Thomas and Deborah Riquier
Bob and Andrea Ritchie
Heath and Heather Ritchie
Lillian Roberts
Bianca Robinson
Judy Robinson-Cox
Lynda Robinson
Junkin and Sarah Rockwell
Christopher Roe and Joanne Hurd
Elizabeth Roland
Barbara Rose
Doreen Ross
Alison Rowell
Richard and Joan Rozman
Pauline Runkle and Robert Beurit
Doris Rust
Joan Ruuska
Robert and Debra Ryan
Jerome Ryan
Geoff and Rosemary Ryding
Charles and Jane Rzepka
John Salisbury
Cynthia Sam
Dianne Sampson
Kathleen Santo
Diane Sargent

Mary Jane Sawyer
Lynne Scanell
Claire Schade Tague
Barbara Schlichte
Paul and Judith Schroeter
Jessica Schwarzenbach and
Paul Hackett
Francis and Barbara Sears
John and Marcia Seward
Bruce and Sandy Shaw
Karen Sheldrick
Arnold Shore and Laurisa Sellers
Davina Shuman
Charles Shurcliff
Carol Sidlowski
Julie Sidon
Marcia Siegel
Anita Siljeholm
Daniel and Rita Simard
Deborah Simmerman
Shirlie Slater
Bruce and Kathy Slifer
David Sloan
John and Betty Smallwood
Eileen Smith
Sally Smithwick and Bruce Novak
Karen Soderberg
Wayne and Heather Soini
An Sokolovska
Arnold and Rachel Soltz
Kathryn Soucy
JoAnn Souza
Thomas and Caroline Spang
Katie St. John
Danuta Stachiewicz
Elaine Starrett
June Steel
Robert Stefani
Olaf and Hilary Stelling
Michael Stelluto
Phyllis Stevens and Allen Giles
Laurel Stevens
Margaret Stocker
Jeff and Linda Stockman
Mark Stolle
Brad and Beth Story
Robert and Beverly Strauss
John Stutz and Zoe Stewart
Lauren Suhecki
Dave and Maggie Sullivan
Gerry Sullivan and Lois Dagle
Michael and Cheryl Sullivan
Joe and Joanna Swayze

Larry and Marilyn Swift
Marie Swinson
Monica Synnott
Daniel and Lynn Szostek
Anthony Tapeé
Frederick Tarr
Norma Tarr
Robin and Martha Tattersall
David and Rita Teele
Ann Teixeira
David and Mary Thielscher
Burt Tinker and Ruth Perrault
Brenda Treuhaft
Mary Tucker
Robert and Joyce Tuffley
Amy Tuttle
Peter Tysver
Diane Usewick
Constance Vallis
Harriet Van Wart
Gregory Verga
Beverly Verrengia
Robert and Jane Viator
Shelley Vincent
Christine Virden
Deborah von Rosenvinge
Dorothy von Rosenvinge
Ralph and Ana Waddey
Maura Wadlinger
Heidi Wakeman and Coley Bryan
Sage and Linda Walcott
Susan Walker
Meg Wallace and Sandy Anderson
Jon Wallenius
Susan Waller
Corinne Waring
James and Lea Watson
Deborah Way
Robert and Mary Weatherall
Gretchen Webster
Ken Weiss
Mary Weissblum
Richard and Rosemary Weissman
Minot and Lindsay Weld
Wendy Wells
Bill Wells and Arlene Hill
Diana Welsh
Joseph and Inga Wennik
Natalie Wheeler
Vivian Wheeler
Jean Whelan
Marit White
Robert White

Susan Whitehouse
William and Deborah Whiting
Phil Wilde
Greg and Karen Wilk
Peter and Lynne Williams
Beth Williams
Susan Willis
Arlene Wilson
David and Enid Wise
Chuck Wisner and Kata Hull
Ross and Betsy Wittemann
Andrew and Mary Wittkower
Frank Wolcott
Robert and Emily Wolfe
Roger and Mary Sue Wonson
George and Venus Wood
Martha Wood
Vivian Wood
William Wood
Katherine Worth
Douglas and Robin Wright
Jim and June Wulff
Dick York
Bernadine Young

MEMORIAL GIFTS

In Memory of Peter Bell
Bucky and Cathy Askew
Bass Rocks Golf Club
Bernice Blitz
Mr. and Mrs. Robert Brown
Caroline Burwell
James and Judith Caulkett
Robert Chandler and Ronda Faloon
Joi Garner
Dody Gates
Craig and Alice Gilborn
Curtis Gollrad and Dale Brown
David and Michele Harrison
James Himes and Susan Bissell
Judy Hoag
Thomas B. and Caroline R. Hovey
Cliff King and Catherine Ryan
Troy and Pat Murray
Newcomb-Hargraves Foundation
Beth Newhall
Northeast Seafood Coalition, Inc.
Arthur Ryan
Patrick Salony and
Christine McGrath
TIAA -CREF Trust Company
Esther and Rex Vanier

In Memory of Dorothy A. Brown
Mr. and Mrs. Robert Brown
Joseph and Maggie Rosa
Arthur Ryan

In Memory of Constance Eppel
Joan Canfield
Frank and Louisa Deland
Natalie Glovsky
Thurston and Mary Hammer
William and Marina Maloney
Joyce McCarthy
Robert and Ellen McGarty
Greg and Maggie Meahl
Shirley Schylling
Syracuse University
Susan Thorne

In Memory of Barbara Erkkila
Robert and Susan Ranta

In Memory of James Falck
Steven Rector and Nancy Levin

In Memory of Lois French Meserve
Jill Pappas

In Memory of Anna Price
Tony and Samantha Goddess

In Memory of Edward Price
Gloucester Democratic
City Committee

**In Memory of John
Bassett Rhinelander**
Cliff King and Catherine Ryan

In Memory of Lewis Rose
Marcia Lambert
Mary Wilbert

GIFTS IN HONOR

In Honor of John Cunningham
Sarah Cushing
Anne Marie Memhard

In Honor of Thomas Hovey
Will Hovey

In Honor of Martha Pistenmaa
Elana Brink

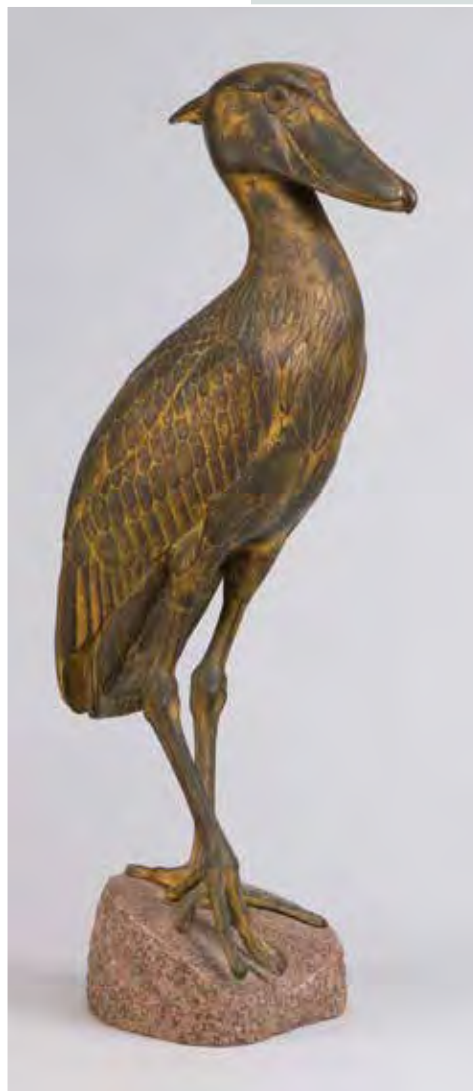
IN KIND DONATIONS

A-1 Maintenance and Carpet
Shep Abbott
American Marine Model Gallery

IN MEMORY

Erich Archer
Atlantis Motor Inn
Tom Babson
Gordon Baird
Leslie Bartlett
Jackie and J.J. Bell
Beauport Transportation
Cape Ann Savings Bank
Cape Ann TV
Carroll Steele Insurance
Chris and Bonnie Covington
Lindsay Crouse
Cricket Press
Jay DiPrima
Rick Doucette
Endicott College
Finch & Rose, Preservation & Design
Bill and Judy Friend
General Antiques
Gladstone Jewelry
Gloucester Civic and
Garden Council
Gloucester Systems
W. Herbert Goodick, Inc.
Frank Graham
John Huss and family
Hershey Frame Shop
Ann Patrice Hickey
Ipswich Museum
Dr. Jan Koch-Weser
KVAssociates
Look @ It This Way Antiques
Jeannine Lynch
Manchester Historical Museum
Maritime Gloucester
Henry and Mary McCarl
Jay McLauchlan
Mehlin Conservation
Jon Morse, CPA
Judith Monteferrante
Montserrat College of Art
Lee Natti
Penny Neal
Sinikka Nogelo
Odyssey Marine Exploration
Robert Osten
Sally O'Toole
Peter Phillips
John Randazza
Steve Rosenthal
Ken Riaf
Lorraine Schulte
Short & Main

Lisa Smith
Brad Story
Lauren Suchecki
Andrew Spindler Antiques
T.E. Andresen Moving and Storage
Thacher Island Association
Timothy S. Hopkins Catering
Ed Touchette
William and Roswitha Traves
Walker Creek Furniture
Windrush Books
Women on the Move, LLC
Urban Grape



For over 30 years, Dorothy “Dotty” Addams Brown served as a trustee of the Cape Ann Museum. During that time, under her stewardship, the organization grew into one of the most important art and cultural institutions on the North Shore.

When Dotty joined the Cape Ann Museum’s governing board in 1966 the organization was poised for expansion. Two sites were under consideration: the Duncan’s Point home of artist Fitz Henry Lane (which had been spared from the ravages of Urban Renewal but left without a plan for its re-use), and the former home of the local branch of the Salvation Army immediately adjacent to the Museum’s Pleasant Street facility. With assurances that the Lane House would be taken care of, the Museum moved ahead with acquisition and development of the Salvation Army property. Within two years, a new four-story building was put up, providing the Museum with exhibition and collections storage space that was state-of-the-art. It is that building that was recently renovated, financed by a capital campaign, of which Dotty graciously served as honorary chair.

The early years of Dotty’s tenure at the Cape Ann Museum were marked not only by expansion of its physical footprint but also by growth of the organization’s base of members and friends. From a small “family” museum with an almost totally volunteer staff, the trustees and board of managers successfully engaged new audiences who valued what the Museum stood for and were eager to support it. Under Dotty’s wise guidance, this broadened base of support was transformed into fiscal stability which allowed the Museum to make important strides forward in professionalizing day-to-day operations.

Dotty’s involvement in the Historical (as she often referred to the Museum) overlapped with that of her close friend Sarah Fraser Robbins who served on the Board of Managers from the early 1960s through 1984. When Sarah stepped off the board to devote time to other pursuits, Dotty was tempted to follow. In fact, she submitted a letter of resignation only to be lured back in for several more years of service by long-time Museum President and close friend, Harold Bell.

Dotty died on March 20, 2014. As part of her estate, Dotty left an unrestricted gift of \$1M to the Museum. Her legacy guarantees that future generations will be inspired by the arts, history and culture of a place she dearly loved. The Museum will be forever grateful for her spirit and her generosity.

—Martha Oaks, *Curator*





Cape Ann Museum Capital Campaign Report

REACHING OUT, STRENGTHENING WITHIN

DONORS

The Museum gratefully acknowledges the donors who supported the Capital Campaign effort. We are proud in knowing that we accomplished what we set out to do: to be better stewards of our collection; to be more welcoming to visitors; to tell the Cape Ann story in a more comprehensive and compelling way; and to fulfill our vision of becoming one of the finest small museums in the country.

HONORARY CHAIR

Dorothy A. Brown

CAMPAIGN CHAIRS

Hope Bachelder
Jackie Bell
William Lynch

STEERING COMMITTEE

J.J. Bell
John Cunningham
Thomas Hovey
William James
Stevie Neal
Ingrid Swanson
Richard Tadler

\$500,000 +

Dorothy A. Brown

\$250,000 +

J.J. and Jackie Bell
Linzee and Beth Coolidge
William and Janet James
Massachusetts Cultural Council
Facilities Fund
Arthur N. Ryan
Richard and Donna Tadler
Gail and Ernst von Metzsch

\$100,000 to \$249,999

Robert Amory
John and Mollie Byrnes
Chris and Bonnie Covington
Alec Dingee and Susan Gray

John Haley

Thomas B. and Caroline R. Hovey
George and Nancy Putnam
John S. Rando, Jr.

\$50,000 to \$99,999

Hope and Robert Bachelder
Stephen and Jill Bell
Betty M. Ellis
John and Kathy Galligan
Henrietta Gates and
Heaton Robertson
Gorton's Seafood
Samuel and Betsy Holdsworth
Henry Luce Foundation
Christine and Paul Lundberg
Noel Mann
Stuart and Elizabeth Moore
Susanna Natti and Alan Willsky
Margaret Pearson
Robert and Ashley Scott

\$10,000 to \$49,999

Babson Historical Association, Inc.
Peter and Karen Bell
Janis and John Bell
Glenys and Kermit Birchfield
Thomas Burger and André Robert
Samuel R. and Rebecca G. Campbell
Cape Ann Savings Bank
Richard and Deborah Carlson

Bettie Cartwright

Caterpillar Foundation
Kathe and Allan Cohen
Robert Cox and Karen Bell
Robert and Jan Crandall
Bill and Ellen Cross
Cruiseport Gloucester
John and Lee Cunningham
Eve and Phil Cutter
Stephanie and Darius Gaskins
John Glovsky
Robbins Nest Foundation
Stella and Charles Guttman Foundation
Margaretta and Jerry Hausman
Ben Herbert
Patricia Kerstein
Jackie and Paul Littlefield
Joan D. Lovejoy
Doris T. Lynch
Marietta Lynch
Nancy and Bill Lynch
Daniel and Jenifer McDougall
Roger and Carol McNeill
Merrill Lynch Wealth Management/
Bank of America
Amy L. Moore
National Endowment for the Arts
Stevie and Greg Neal
Judson and Lisa Reis
Joseph and Maggie Rosa

Hinda Simon

Ingrid Swanson
Lynn S. and Joan B. Swigart
Windover Construction
Clive R. Wood and Stella C. Martin
Wyeth Foundation for American Art
Youths' Friends Association, Inc.
Tom and Kristin Zarrella
Chip and Margaret Ziering

\$2,500 to \$9,999

Bank Gloucester
Deborah M. Blake
Kevin and Rosemarie Bottomley
Cape Ann Marketplace LLC
Citizens Bank
Herb Collins
Pearce and Phoebe Coues
Danversbank Charitable Foundation
Christopher and Jane Deering
Alice and Ken Erickson
Rose Marie Glen
Stephen and Nina Goodick
Stephen Kaloyanides, Jr.
Jan Koch-Weser and Diane Chen
KVAssociates, Inc.
Nancy LeGendre and Walter Herlihy
Mark Lindsay and
Martha Morgan Lindsay
MacDougall Johnson Design
Eileen and Joseph Mueller



(above) Eino Natti, *Gloucester* [detail] (1961), ink on cotton, original Folly Cove Design. (left and opposite) Reopening Gala, August 19, 2014.



R. David Porper
Ellen and Frank Previce
James and Kate Staviv
Jolinda and Bill Taylor
The John and Naomi
Tomfohrde Foundation

Up to \$2,499

Barbara H. Almy
Ambient Temperature Corporation
Gail E. Anderson
Norma L. Andrews
The Annisquam Exchange
John and Sarah Appleton
Neale and Louisa Attenborough
Will and Susan Baldwin
Anna Vojtech Baumgaertel
Catherine Bayliss and Michael Lipton
Kenneth and Helen Beal
Beate Becker and Stephen Vavak
Selma Bell
Leslie E. Bell
Peter and Beth Brau
Peter and Linda Braun
Mr. and Mrs. Robert F. Brown, Jr.
F. W. Bryce, Inc.
Mary M. Burgarella
Joseph Butler and Nancy Davis
Robert and Ellie Cagnina
William and Max Callender
Cape Ann Insurance Agency, Inc.
Carroll K. Steele
Insurance Agency, Inc.
Anne Babson Carter
Philip Chalmers and Susan King
Robert Chandler and Ronda Faloon

Dr. Kevin and Kathleen Clancy
Nathan Cohen
Joan Collier
Capt. David Condino and
Ms. Margaret Brady
John and Polly Connors
Catherine and Nathaniel Coolidge
Kathryn Costa
Robert Coyne
David W. Slade, Cricket Press, Inc.
Mary and David Dearborn
Defalco Painting Company
David Demaine
Charlesanna F. Detra
Dawn Steele Dexter
Margaret Donahue
Patty Donahue and Greg Sacca
Sarah V. Dunlap
Deborah and William Ebling
Gary O. Emmer
Robert and Mary Emmons
Diane G. Faissler
James Falck
Susan Fehrmann
Peter Feinstein and Miriam Weinstein
Anita D. Freeman
Deborah Freeman
William and Judy Friend
Marion M. Frost
Dorothy Ganick
Dr. and Mrs. Michael Garcia
David B. Gardner
Rabbi Myron and Eileen Geller
Robert J. Gillis, Jr. and
Patricia A. Harrington
Valerie and Paul Gilman

Pippy Giuliano and Yuri Tuvim
Ronald Glick and Sarah Robbins-Evans
Glover's Floor Covering, Inc.
Peter and Jan Goodwin
Karen and Mike Gorton
Mark and Janet Gottesman
Stephen and Marion Hall
Susan D. and R. Douglas Hall
Joy and Tom Halsted
Marion A. Harding
William and Rose Hausman
Kathryn Hollett
Nancy and Charlie Hovey
John and Sally Huss
Robert and Patricia Jedrey
Bruce Jones
Johnson & Johnson
Robert S. Kairalla
Linda and Jerome Klein
Dr. Hamer and Charlotte Lacey
Peter and Sandra Lawrence
Margery Leach
Nancy and Michael Leavitt
The Liquor Locker
Daniel and Marcy Lyman
Charles Marcous
Joseph G. Mari
Barry and Carol Mawn
David and Janet McAveaney
Connie and Elton McCausland
Mary Jane and John McGlennon
Donna J. McIntire
Joseph Mechem
Wilhelm Merck and Nonie Brady
Richard P. Mills and Amy Bell
John and Betty Minnick
Sarah Mowitz
Grace and David Murray
Duncan and Beebe Nelson
Ronald Nickerson
Ben Niedermeyer and Joanne Hidaka
Elaine M. Ohlson
Trudi Olivetti
Steven Phillips and Amy Gault
Ruth and Richard Pino
Doug and Jo Kris Powell
Esther and Christopher Pullman
Ann L. Pulver
Oliver Radford and Stephen Perry
Jocelyn F. Ramella
Howard and Joan Resnikoff
Mary Rhineland
Rockport National Bank

Bruce and Jane Rosenberg
Martha and Mel Rosenblatt
Steve and Kit Rosenthal
Edward S. and Susie W. Rowland
Christopher and Eroica Schenck
Robert Schick, Jr.
John Schoenbaum
Claudine G. Scoville
David and Marie Louise Scudder
Jack and Judy Shields
Leslee Shlopak
Edward Shoucair and
Kaye Lynn Johnson-Shoucair
Sally Simons
Peter Small
Martha and J.D. Smeallie
David and Ginni Spencer
Eileen M. Sporing
Anne-Seymour St. John and
W. Albert Ellis
Lizel and Hoff Stauffer
Carol A. Stearns
June Landergeren Steel
Jane E. Stempel
Robert Stern and Gail Howrigan
David W. Stirling and
Fenton Nelson-Stirling
Mrs. Paul Strisik
Donald and Phyllis Sudbay

Sugar Magnolias
Peter and Lynda Surdam
Mathew Swift
Ms. Bonnie Sylvester and
Dr. Jonas Gavelis
Ann B. Teixeira
Timberline Enterprises
Polly and Gerard Townsend
Vista Motel
Conrad Vitale
Hazel L. von Roseninge
Mr. and Mrs. David Warner
Waters Corporation
Barry and Susan Weiner
Kenneth P. Weiss
Natalie A. Wheeler
Patricia Whitlock
Thomas Widmann
John Wilmerding
Susannah S. Wolfe

A very special thanks to:
Carroll K. Steele Insurance
Agency, Diane Chen KW,
KVAssociates, The Montagnino
Family, Judith Monteferrante,
Women on the Move LLC and
to the many others who
provided support.

CAPITAL CAMPAIGN FINANCIAL SUMMARY

This is not a complete financial statement. A complete audited financial statement is available upon request.

Donations	\$ 6,042,757
Expenditures	
Building and Sculpture Park	\$ 4,379,374
FHL Catalogue Raisonné and other projects	\$ 185,961
Administrative Costs	\$ 126,791
Total Expenditures	\$ 4,692,126

After repayment of a bank construction loan (\$300,000 of a \$690,000 total borrowing still to be repaid), the remaining Campaign funds will be used to pay for other approved capital projects (including a Collections Acquisition/Conservation Fund), and the balance will be invested as part of the Museum's endowment.



Reaching Out, Strengthening Within
CAPE ANN MUSEUM
August–December 2014





