

# CAPE ANN MUSEUM



2013 ANNUAL REPORT

## OUR MISSION

To foster an appreciation of the quality and diversity of life on Cape Ann, past and present;

To further the knowledge and enjoyment of Cape Ann history and art;

To collect and preserve significant information and artifacts; and,

To encourage community involvement in our programs and holdings.

In all our activities, the Museum emphasizes the highest standards of quality.



[above] Newly painted Davis House. [cover] Timberline delivers a skylight for the new Fresnel Lens Gallery.

CAPE ANN MUSEUM  
ART HISTORY CULTURE

Dear Friends,

It is with great pleasure that we report on the past year's accomplishments and the progress of the Museum's transformation.

The headline of 2013 is, of course, the extraordinary success of our Capital Campaign, *Reaching Out, Strengthening Within*. Thanks to you, we are pleased to announce that we have reached our \$5 million goal.

What is especially gratifying about the results is the broad-based nature of the support we have received:

- 250+ individual donors have pledged \$5,050,000
- 11 national and local foundations made grants totaling more than \$500,000
- 25 businesses have almost doubled the \$50,000 challenge grant made by Gorton's

And, at this writing, the community at large is continuing its support. We are truly grateful to all of you for your patience, your enthusiasm and your commitment to helping us become one of the best small museums in the country.

Last year, we set out to *Strengthen Within* – to be responsible stewards by caring for our existing facilities with improvements in environmental systems, fire prevention, security and lighting – enhancements that benefit both the collection and our visitors.

The construction phase is nearly complete and one can already see how the new design will allow us to significantly improve not only how we display and safeguard the art and artifacts entrusted to us, but also how it will enliven and integrate the multiple narratives of this remarkable place.

Here are some highlights:

- Walker Hancock's sculpture, *Air*, is the centerpiece of the new Central Gallery. An historic "balloon" map of Cape Ann (1879) will orient visitors to the area and to the Museum, while selected works from the collection illuminate these major themes: the place, the people, the industry and art.
- The 1892 Gloucester waterfront diorama, reconfigured by maritime historian and ship model maker Erik Ronnberg, Jr. will be installed in the center of the new Cape Ann Gallery giving visitors a 360 degree view of the historic model. This gallery will provide visitors with the social, economic, industrial and artistic context for all the collections – a visual timeline with

representative art and artifacts closely associated with the history of Cape Ann and its people.

- The completely re-imagined Fitz Henry Lane Gallery will provide a more comprehensive and cohesive understanding of Lane's life and work. Three period rooms will illustrate how Lane's works might have been displayed by their original owners.
- The Fresnel lens from Rockport's Thacher Island, standing an impressive 13 feet high, introduces and anchors our maritime collection.
- The new Folly Cove Designers Gallery will provide a permanent showcase for one of the original presses and the textiles created by these resourceful Cape Ann women and men.

Although the Museum was under construction for the last quarter of the year, this did not interrupt our programming. *Reaching Out* is a fitting theme for our educational events during 2013.

- We showcased the works of local artists and artisans with a tribute to the *Cape Ann Artisans at 30* who have opened their studios to the public twice a year for three decades.
- James Woodward and his team, among the last "lampists" working in the U.S. today, continued their efforts on Cape Ann with the conservation and installation of the *Thacher Island Fresnel Lens* here at the Museum. A series of related programs was presented in collaboration with the Thacher Island Association.
- We offered a look inside the lives of an intimate circle of modernist sculptors, lithographers, painters, photographers, poets and writers – Albert Alcalay, Doris Hall, Helen Stein, Tom O'Hara, Nell Blaine, Mary Shore, Vincent Ferrini, and others – who called Rocky Neck home during the post-WWII years.
- In collaboration with the Gloucester Writers Center and the Charles Olson Society, we presented a talk by Amiri Baraka as part of the Charles Olson Lecture Series, and with the Rocky Neck Art Colony we hosted a talk by artist and master teacher, Barbara Moody.

We opened the doors to school children, teachers and the community.

- As part of our *Saturday Showcase* series we offered: a family-friendly concert event featuring Robert J. Bradshaw's "Katy and the Big Snow," based on Virginia Lee Burton's classic children's story presented

by the Beaufort Chamber Players with a discussion about how Burton's book was translated into music.

- We conducted 39 *Young at Art* classes for Head Start reaching 647 students and teachers, and led 26 school tours of the Museum for 934 students from our surrounding communities.
- Funded and initiated by the Gloucester Education Foundation and the Gloucester Public Schools, we launched *Artistic Bridges*, a program which brings working artists into the classrooms of public school teachers and students.
- Children and adults tried their hand at block printing mastered by the Folly Cove Designers, after a demonstration by Mary Rhineland.
- Our *Fall Festival* featured colorful and heartwarming Gloucester neighborhood quilts made by Juni Van Dyke's art classes at the Rose Baker Senior Center.
- We explored historical, artistic and maritime themes based on the Museum's collection with residents of numerous nursing homes and day care programs as part of our *CAM Connections* outreach.

The Museum is scheduled to reopen with a Gala Celebration on August 16, followed by a week of very special

activities for members and friends: Live music, customized tours throughout the week, a Member's Reception on Thursday evening, August 21, followed by free admission to all Cape Ann residents on the weekend of August 23 and 24. We hope you will join us – every day.

With redesigned spaces and a reinstalled collection, we will tell the story of Cape Ann that residents and visitors will be proud of, that will inspire this and future generations to continue the tradition of creativity, invention and expression of the human spirit that are the hallmarks of this singular place.

Once again, we thank all of you who believed in our vision for the future. Your support and your continuing commitment to our mission sustained us during this year of change and renewal.

We look forward to welcoming you inside your new Cape Ann Museum.

Sincerely,

Ronda Faloon      John Cunningham  
*Director*              *President*



F. Kimball Rogers (1854-1930), *Balloon View - Cape Ann to Boston, 1879*. Reproduced from a lithograph printed by J. H. Daniels, publisher, Boston.

John Cunningham, *President*  
J.J. Bell, *Vice President*  
David Porper, *Clerk*  
Arthur Ryan, *Treasurer*

Robert Bachelder	William James
Kermit Birchfield	Paul Littlefield
Herbert Collins	William Lynch
Bonnie Covington	Amy Moore
William Cross	Stevie Neal
Stephanie Gaskins	Ronald Nickerson
Henrietta Gates	Lisa Rich
Samuel Holdsworth	Hinda Simon
Thomas Hovey	Richard Tadler

2013 STAFF

**Administration**

Ronda Faloon, *Director*  
Jeanette Smith, *Administrator*  
Cara White, *Administrative Assistant*

**Curatorial**

Martha Oaks, *Curator*  
Leon Doucette, *Curatorial Assistant*

**Development**

Gerry Herbert, *Director of Development*  
Amy Fanning, *Development Coordinator*  
Robert Bibelhauser, *Media and Communications Coordinator*

**Education and Programs**

Courtney Richardson, *Director of Education and Public Programs*  
Elizabeth Browning, *Education Assistant*

**Facilities**

Walter Chianciola, *Facilities Manager*

**Research**

Stephanie Buck, *Librarian/Archivist*  
Fred Buck, *Photo Archivist*  
Linda Johnson, *Librarian Assistant*

**Visitor Services**

Dianne Sampson, *Reception*  
Alex Dahlmer and Emma Paddock,  
*Weekend receptionists/monitors*

**Building Committee**

J.J. Bell, *Chair*  
 Robert Chandler  
 Herbert Collins  
 Pearce Coues  
 John Cunningham  
 Stephanie Gaskins  
 Sam Holdsworth  
 Ron Nickerson  
 David Porper  
 Arthur Ryan

**Capital Campaign Steering Committee**

Dorothy Brown,  
*Honorary Chair*  
 Hope Bachelder, *Co-Chair*  
 Jackie Bell, *Co-Chair*  
 William Lynch, *Co-Chair*  
 J.J. Bell  
 Bonnie Covington  
 John Cunningham  
 Tom Hovey  
 William James  
 Amy Moore  
 Stevie Neal  
 Ingrid Swanson  
 Richard Tadler

**Collections Committee**

Kermit Birchfield, *Chair*  
 Robert Bachelder  
 Elizabeth Clement  
 John Cunningham  
 Sam Holdsworth  
 Daniel McDougall  
 John McGlennon  
 Andrew Spindler  
 Ingrid Swanson  
 John Rando  
 Arthur Ryan  
 Ed Touchette  
 William Traves

**Education Committee**

Stephanie Gaskins, *Chair*  
 Jeff Carovillano  
 John Cunningham  
 Dawn Dexter  
 Susan Erony  
 Tom Hovey  
 John Huss  
 Lisa Rich  
 Ed Touchette

**Executive Committee**

John Cunningham, *Chair*  
 J.J. Bell  
 Tom Hovey  
 Arthur Ryan

**Finance Committee**

Arthur Ryan, *Chair*  
 John Cunningham  
 Paul Littlefield  
 Richard Tadler

**Audit Sub-Committee**

Paul Littlefield  
 Lisa Rich  
 Richard Tadler

**Governance Committee**

Stevie Neal, *Co-Chair*  
 Hinda Simon, *Co-Chair*  
 Bill Cross  
 John Cunningham  
 Sam Holdsworth  
 Stephanie Gaskins

**Nominating Committee**

J.J. Bell, *Chair*  
 John Cunningham  
 William James  
 Lisa Rich

# COLLECTIONS

THE CAPE ANN MUSEUM THANKS THE INDIVIDUALS AND OR/THEIR ESTATES WHOSE GENEROUS DONATIONS HAVE ENRICHED THE MUSEUM'S COLLECTIONS OVER THE COURSE OF THE YEAR.

**FINE AND DECORATIVE ARTS**

Gift of the family of Albert Alcalay: *Night Fleet*, 1956, oil on canvas by Albert Alcalay (1917–2008).

Gift of Kermit and Glenys Birchfield: *Annisquam Lighthouse*, oil on canvas by a grandson of W. Lester Stevens (1888–1969).

Gift of Mollie and John Byrnes: *Fanfare*, 2008, thrown and cut porcelain by Diane Chen, in collaboration with Joel Park.

Gift of Ninon Lacey Chaet: 56 paintings in various media by Bernard Chaet (1924–2012), and two drawings by Reed Kay (b.1925).

Gift of Abby Davis: Two untitled paintings, undated, both oil on canvas by Dennis “Jim” Sweeney (1922–1998).

Gift of Robert and Ann DeMaine: Two paintings, *Rockaway Wharf* and *Summer Theatre, Rocky Neck*,

c. 1950, watercolors on paper by Harry DeMaine (1880–1952).

Gift of Claude Erbsen: A view of fishermen mending nets, c. 1959, lithograph on paper by Leonard Creo (b. 1923).

Gift of The Gergely Schreyer Collection: Two drawings, *Gloucester Wharf* and *The Net Menders*, c. 1955, pen and ink on paper by Tibor Gergely (1900–1978).

Gift of Myra Hall: *Table Top II*, c. 1960s, oil on canvas by Zygmund Jankowski (1925–2009).

Gift of Carolyn Harris: *Natural Selection*, a portfolio of ten landscape prints by various artists including Nell Blaine, Bernard Chaet and Carolyn Harris, published 2007 by the University of Richmond Museum/Center Street Studio.

Gift of William and Janet James: *Studio with Red Dresser*, c. 1995, oil on canvas by Dennis Flavin (b. 1950).

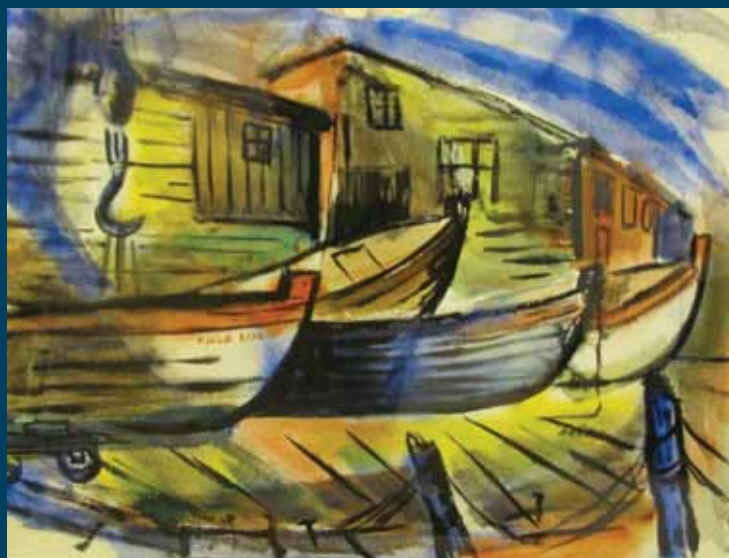
Gift of the Estate of Richard Kuehne: A watercolor of the First Universalist Church, Gloucester, a chest and a gold and silver leafed standing screen, all c. 1930s, made by Max Kuehne (1880–1968).

Gift of Milton and Helen Lauenstein: A collection of 25 paintings in various media by recipients of Yale's Gloucester Prize between 1994 and 2011; *Self Portrait with Color Chart*, 1988, oil on canvas by Bernard Chaet (1924–2012).

Gift of Dara Mark: Six paintings of Cape Ann harbor views, all between 1947 and 1970, watercolors on paper by Mayo Sorgman (1912–2006).

Gift of John McClellan: *Bust of Robert Cook*, 1938, plaster with black patina by James T. McClellan (1910–2005).

Mayo Sorgman (1912–2006), *The Boatyard*, 1967, watercolor on paper. Gift of Dara Mark, 2013. [2013.108.04]



Gift of Ronald Nickerson: *Glacier*, c. 1950s, oil on board by Mary Bryan (1906–1978).

Gift of Leslie Pearlman: *View of Smith's Cove* and *Diners*, two watercolors, c. 1995–1998 by Amalia “Mali” Pearlman (1918–2009).

Gift of Marianne Plummer and Letitia Evans: *Portrait of Catherine Edwards Jones*, c. 1890, oil on canvas by Charles Allan Winter (1869–1942).

Gift of Rebecca Reynolds: Eight plaster sunken reliefs of animals, cast in 1998, originals sculpted in 1931 by Katharine Lane Weems (1899–1989).

Gift of Roswitha and William Traves: *Self Portrait*, 1997, oil on canvas by Jack Jones (1940–2011).

Gift of Cyrille White: *Salt Marsh*, c. 1950, watercolor on paper by Harry DeMaine (1880–1952).

Gift of Francis Wosmek: *Mother and Child*, ink wash on paper by Barbara Swan (1922–2003).

Gift of Judi Ross Zuker: *Gloucester Harbor*, c. 1950s, oil on canvas by Harold Rotenberg (1905–2011).

## FISHERIES and MARITIME ARTIFACTS

Gift of Frank Favalora: Two decorative swordfish bill swords, c. 1999, swordfish bill with wooden inlay by Tom Favaloro (1921–2008).

Gift of Daniel Greenblatt: *Rare Breed*, 1985, a model of a 1930s eastern-rig trawler by Ed Leavitt.

## ARTIFACTS

Gift of Stephanie and Frederick Buck: Thacher Island Association Commemorative Coin, c. 2013.

Gift of Walter Chianciola: St. Peter's Fiesta 86th Anniversary Pin, 2013.

Gift of Daniel Driscoll: *Gloucester Day Cup*, 1907, made out of silver plate by the Homan Manufacturing Company, USA.



Max Kuehne (1880–1968), gold and silver leafed standing screen, c. 1930s. Gift of the Estate of Richard Kuehne, 2013.

Gift of Josephine R. Ellis: Gloucester School Department *Sawyer Medal*, c. 1924, gold.

Gift of Paulette Loomis: A hand-wrought aluminum punchbowl and ladle, undated, made by Lewis F. Whitney.

## FOLLY COVE DESIGNER ARTIFACTS

Gift of Joan P. Curhan: Skirt printed with *Froggy Went a Courtin'* design, undated (design made c. 1949), ink on cotton by Joshua Tolford (1910–1985).

Gift of David and Grace Murray: Cotton yardage printed with *Homeport* design, undated (design made 1949), and another printed with *Goose Cove* design, both ink on cotton by Louise Kenyon (1906–2000).

Gift of Mary Jane Olney: Table set printed with *Cotillion* design, undated, ink on cotton by Lee Natti (b.1919).

Gift of John and Nancy Simson: A collection of placemats and cloth napkins printed with designs by various Folly Cove Designers, 31 articles in total, ink on cotton.

Preservation of the Museum's holdings is central to the organization's mission. During 2013, we were pleased to be able to move ahead with several important projects, most of which were made possible through generous support from outside funders.

## WHITE-ELLERY HOUSE

The initial phase of stabilization work on the windows of the historic White-Ellery House (1710) was successfully completed under the supervision of contractor Steve Goodick. Funding support was provided by the City of Gloucester's Community Preservation Act Grant Program, the Bruce J. Anderson Foundation, the Society of the Colonial Wars in the Commonwealth of Massachusetts and the National Office of the Society of Colonial Wars.



Steve Goodick of W. Herbert Goodick, Inc. makes final adjustments to the new windows at the White-Ellery House.

## FRESNEL LENS

A team of three lampists successfully completed the first stage of conservation work on the 1861 First Order Fresnel lens once used in the south lighthouse tower on Thacher Island and now at the Cape Ann Museum. In 2014, the lens will be united with its original base and installed in a new exhibition gallery within the Museum. We are grateful to the more than 150 individuals and foundations who have provided support for this project over the last few years, including the Bruce J. Anderson Foundation, the City of Gloucester's and the town of Rockport's Community Preservation Act Grant Programs, Linzee Coolidge and the Dusky Foundation, Ian and Josie Gardiner and the Humane Society of the Commonwealth of Massachusetts, Paul Lohnes and the Massachusetts Charitable Mechanic Association, the Manton Foundation and Arthur Ryan.

## OUTGOING LOANS

Approval was given in December 2013 to loan *Artist at Work* (1887) by Charles Courtney Curran (1861–1942) to the travelling exhibition *Charles Courtney Curran: Seeking the Ideal*. Participating galleries include the Dixon Gallery and Gardens in Memphis; the Frick Art and Historical Center in Pittsburgh and the Columbia Museum of Art in Columbia, SC.

*New England Ladies* (1925) by Theresa Bernstein (1890–2002) has been loaned to the travelling exhibition *Theresa Bernstein: A Century in Art*. The exhibition travels to the James Gallery in New York City, the Phillips Museum in Lancaster, PA, the Boca Raton Museum of Art in Boca Raton, FL and the Walter J. Manninen Center for the Arts at Endicott College in Beverly, MA.

## MUSEUM PURCHASES

*Poplar Street Cemetery, Gloucester, 2013*, archival pigment photographic print by Gail Albert Halaban (b.1970). Purchased with funds from the Kanter Kallman Foundation.

*Portrait of Mehitabel Appleton Coolidge* (1831–1901), 1861, oil on canvas by William Morris Hunt (1824–1879). Purchased with funds given by anonymous donors.

## LIBRARY & ARCHIVES PURCHASES

**Photographs:** U.S. Post Office, Gloucester, 1934; The Gloucester Elks Lodge, 1934; 20 glass plate negatives of stereo views of Cape Ann.

**Books:** *Stereo Views* by William C. Darrah; *Who's Who on the North Shore, 1935*; GHS Year Books: *Reflector, 1915, Beacon, 1937*, and 16 *Flickers* from 1958 to 2009; *Massachusetts Business Directory, 1852*; Gloucester Telephone Directories, 1923 and 1975; *Little by Little* by Nina Fletcher Little.

**Newspapers and Magazines:** Bound copy of the *Cape Ann Advertiser, 1861 and 1862*, purchased with funds provided by Arthur Ryan and William Traves; *The North Shore Breeze, Dec. 1922*; *American Artist Magazine, May 1952*.

**Postcards:** Hawthorne Inn; Rocky Neck Gift Shoppe; Rocky Neck Guest House, 1940; Evening in Gloucester Harbor (Herman Spooner photo); accordion postcard *Seen Through a Camera*, views of Cape Ann.

**Ephemera:** New England Music Festival Program, Gloucester, 1937; By-Laws of Odd Fellows, Ocean Lodge, 1902; Order of Services Tremont Temple, July 1879.



## GIFTS TO THE LIBRARY & ARCHIVES

Gift of Manchester Historical Museum: *Miss Louisa Lord's Diary of a Voyage on the Ship St. Petersburg, 1840*.

Gift of Beth Bourguignon: Addendum to the Phillips & Holloran Collection of Architectural Plans: Notebooks and papers.

Gift of Frances Wosmek: The lifetime work of this local artist and children's author: her art, awards, books, and manuscripts.

Gift of Jonathan M. Olly: PhD dissertation, *Imagining the Old Coast: History, Heritage, and Tourism in New England, 1865–2012*.

Gift of Carol Carlson: Sven Ohrvel Carlson, *World War II Soldier – Artist Sketch Book*.

Gift of Lauren Walling: Photographs of Lane's Cove and vicinity.

Gift of John L. Gardner: Letter from Walker Hancock to John L. Gardner re: cast of *Day Dreamer*.

Gift of John and Sally Huss: *Northeast from Boston* by Jack Manley Rose.

Gift of Mabel and Howard Hart: Postcards of the Riverdale Grist Mill.

Gift of Lucille Cressey: Postcards of Gloucester.

Gift of Maggie Rosa for the Gloucester Education Foundation: Gloucester Public School Art Festival Posters 2008–2013.

Gift of Fred Peterson: *A Blacksmith Shop Grows Up* and a Cape Ann Tool Co. brochure.

Gift of Betty Roland: Gloucester High School *Flickers* from the 1960s.

Gift of David Cox: *Portuguese in Gloucester, 1870–1938* by Frank L. Cox.

Gift of Gloucester Writers Center: *Incredible Dancer: Poems from Vincent Ferrini to his Friends on Cape Ann*.



[above] Detail from one of a collection of postcards given by Mabel and Howard Hart. [left] One of two decorative swordfish bill swords, c. 1999. Swordfish bill with wooden inlay by Tom Favalora (1921–2008). Gift of Frank Favalora, 2013.



An intriguing find in the Museum's archives is a version of Lane's 1855 lithograph *View of Gloucester* that shows compelling evidence of being hand painted by Lane himself. Lane did three lithograph views of Gloucester in the years 1836, 1846 and 1855. We know that the 1846 print was offered hand colored by Lane for an additional 25 cents. Yet none of any version are currently known.

It was a common practice to handcolor over black and white lithographs, usually in watercolor, often by the print seller long after they were made. Color was broadly applied and obscured the subtlety of the tonal gradation and contrast of a master lithographer such as Lane.

The painting on this version is unlike any we've seen. The image area is covered in an earth tone wash, very similar to Lane's ground color for his oils. The white highlights of selected buildings and sails are overpainted in oil making them jump forward. The sky is painted in thin oil washes over the darker ground evoking a dense, humid atmosphere. The cloud shadow has been moved to the center, and focuses the eye on

the white church steeple and large ship. The floating buoy line has been shortened to line up under the mast of the schooner. Foreground grasses and rocks, distant wharf pilings and rigging details are all meticulously painted and, amidst the jumble of downtown buildings, the tiny gables of Lane's house have been outlined in white.

The attention to detail and the reworking of tonal and compositional elements go far beyond the wash-like coloring of Lane lithographs we regularly see. Yet attribution often rests on provenance. This work and the Lane drawings came from Samuel Mansfield via Joseph Stevens, Lane's great friend and patron. Stevens' ownership, likely a gift from Lane, is the most convincing evidence that this is an original and masterful work by Lane.

Work on the Lane Catalogue Raisonné is ongoing. We hope to launch the first phase of the Project in Spring 2015. We are grateful to the Wyeth Foundation, Danversbank Charitable Foundation and the John H. and H. Naomi Tomfohrde Foundation for their support.



**Danversbank**  
Charitable Foundation

JOHN H., AND H. NAOMI TOMFOHRDE FOUNDATION

Fitz Henry Lane (1805–1865), *View of Gloucester, Mass.*, 1855, lithograph on paper painted over in oil. Printed by L. H. Bradford and Company, Boston. Published by Proctor Brothers, Front Street, Gloucester.

Gift of Susan Zwart for Second Glance: Framed GHS Diplomas.

Gift of Diane Chen Koch-Weser, ceramic artist: *At World's End*, an exhibition catalogue and *Carved*, a portfolio of collaborations.

Gift of Adam Bolonsky: Books, ephemera and papers from his father's estate.

Gift of Arthur Ryan: Collection of books from his library of local art, history and poetry.

Gift of Priscilla Herdman: Photograph album of the construction of Haskell Pond Reservoir.

Gift of Amy Vicari: Brochures and programs of Gloucester centenary and tercentenary celebrations.

Gift of Waltraut Brown: Childhood autobiography and an Oral History from Gloucester Manor residents in the 1980s.

Gift of William James: Two maps of Gloucester and Rockport and three reproduction maps: one of Rockport and two coastal surveys.

Gift of Victoria Wilson: *A Life of Barbara Stanwyck: Steel-True*. Stanwyck was born Brooklyn, NY, daughter of Byron E. and Catherine A. (McPhee) Stevens, formerly of Gloucester, MA.

Gift of Mr. and Mrs. Andrew Jacobson: Collection of photographs of Gloucester Harbor and Essex shipbuilding.

Gift of Fred A. Abbe: *Gloucester Master Mariner's Association Year Book*, 1949.

Gift of Mary McCarl: Two history books from her library.

Gift of William Traves: Six art books from his library.

Gift of Chester Brigham: CD of his research for his book *On Opposite Tacks and Down East Magazine*, 1966.

Gift of West Gloucester Trinitarian Congregational Church: Two copies of *The Church in the Wilderness, 1713–2013*.

## WHITE-ELLERY HOUSE PROGRAMS

2013 marked the fifth year the Museum's White-Ellery House (1710) has served as the backdrop for a series of contemporary art installations and historical presentations. Scheduled to correspond to Escapes North's *17th Century Saturdays* program, the installations attracted large audiences and resulted in spirited interchange between visitors and installing artists.

July 6, 2013

Mary Rhinelander: *Collection/Reflection*

*Collection/Reflection* featured an assortment of items collected by the artist throughout her life, arranged so as to give new meaning to the ordinary objects that make up our lives.

August 3, 2013

Sinikka Nogelo: *Tin – Relics and Remakes*

*Tin* included works in paint, recycled tins and plastics, and various construction materials left over from the ongoing Gloucester City Hall restoration.

September 7, 2013

Chris Nulty: *Holy City of Gloucester* consisted of a selection of small scale sculptures created entirely of stones and pebbles collected on local beaches.

October 5, 2013  
Fall Festival

The Fall Festival featured the colorful and heartwarming Gloucester neighborhood quilts made by Juni Van Dyke's art classes at the Rose Baker Senior Center.

Chris Nulty's sculptures  
at the White-Ellery House,  
September 2013.

## EXHIBITIONS

EXHIBITIONS ARE ALWAYS PLANNED TO SHOWCASE THE COLLECTION, TO CELEBRATE CAPE ANN CREATIVITY PAST AND PRESENT, AND TO INFORM AND ENGAGE OUR VISITORS.

### **Cape Ann Artisans at 30**

March 2 through May 26, 2013

*A retrospective exhibit honoring the 30th anniversary of the Cape Ann Artisans' first studio tour, featuring a wide range of work by 70 members, past and present.*

### **Dennis Flavin: Uncommon Vision**

April 6 through May 26, 2013

*An exhibition of the artist's recent paintings, charged with his unique expressive energy.*

### **Four Winds: The Arts and Letters of Rocky Neck in the 1950s**

June 15 through September 29, 2013

*This exhibition offered a glimpse into the lives of an intimate circle of modernists who called Rocky Neck home during the post-war years; the exhibit featured paintings and drawings by a number of artists, along with poetry by Vincent Ferrini.*

### **Hopper Redux: Photographs by Gail Albert Halaban**

June 29 through September 29, 2013

*An exhibition of large-scale contemporary photographs that offered a fresh look at the Gloucester houses made famous in the paintings of Edward Hopper.*

## LIBRARY & ARCHIVES EXHIBITIONS

*The War of 1812* January 2013

*300th Anniversary of the West Gloucester*

*Trinitarian Congregational Church* January 2013

*Sylvester Ahola, Gloucester Gabriel* March 2013

*Ladies of the Lens: Photographs by Martha Hale Harvey and Eleanor Parke Custis* March 1–April 24, 2013

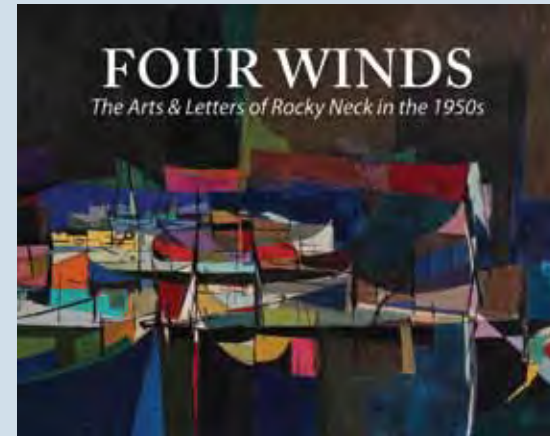
*Howard Blackburn: The Lone Voyager* April 2013





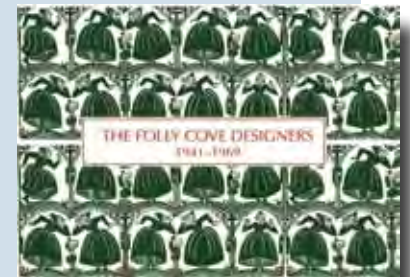


Gail Albert Halaban, *Poplar Street Cemetery*, 2013, archival pigment print mounted to plexi. Museum purchase, 2013. Funds provided by the Kanter Kallman Foundation. [2013.39]



*Four Winds: The Arts and Letters of Rocky Neck in the 1950s*  
Exhibition catalog with essays by Peter Anastas, Ammiel Alcalay and Martha Oaks.

*The Folly Cove Designers 1941–1969*  
A revised edition of the 1996 exhibition catalog.



*2014 Folly Cove Designers Calendar*  
Featuring works by the Folly Cove Designers with descriptions by Designer Lee Natti.



*Hopper's Houses Gloucester Walking Guide*  
A guide to 26 Gloucester houses painted by Edward Hopper.





[clockwise from top left] The audience enjoys composer Robert Bradshaw's interpretation of Virginia Lee Burton's *Katy and the Big Snow*; Cape Ann Artisan member Pam Stratton demonstrates mosaic techniques; Lampist Kurt Fosburg explains the design of the Fresnel lens; Writers David Rich and Peter Anastas at *Reading Ferrini*, an event held in conjunction with the *Four Winds* exhibition.

# PROGRAMS AND EDUCATION

THE MUSEUM'S ANNUAL PROGRAM CALENDAR IS DESIGNED TO COMPLEMENT ITS COLLECTIONS AND SPECIAL EXHIBITIONS. LECTURES, GALLERY TALKS, POETRY READINGS, ARTIST DEMONSTRATIONS, WALKING TOURS, FILM SCREENINGS AND MUSICAL PERFORMANCES PROVIDE INSIGHT INTO THE ART, HISTORY AND CULTURE OF CAPE ANN. PROGRAM PARTICIPATION AND THE NUMBER OF COLLABORATIVE PROGRAMS REMAINED STRONG IN 2013 AS WE OFFERED OFFSITE PROGRAMS AFTER CLOSING IN OCTOBER.

## THE NUMBERS

- The total number of classes and programs offered to adults and children was 186, and the total number of people who participated in these offerings was 7,600.
- In 2013, more than 4,300 adults participated in 70 educational and outreach programs offered by the Museum.
- 1,323 visitors were introduced to the Museum and its collections through 287 docent-led tours.
- 3,200 children and families participated in more than 100 programs designed specifically for them.
- Students from more than 30 local schools displayed outstanding student artwork throughout the year in the Museum.

## THE HIGHLIGHTS

In 2013, members and visitors enjoyed Cape Ann Artisan demonstrations and workshops, the summer courtyard concert series, lighthouse and lens lectures, gallery talks with artists and writers, studio visits, two CAMafterhours evenings of sound installations and an intimate artist conversation, walking tours exploring the neighborhood and a new film series offered in partnership with Cape Ann Community Cinema.

We continued our collaborative efforts partnering with other organizations and individuals throughout the year to offer the *Distinguished Artist/Teacher, Goetemann Artist in Residency* lecture with Rocky Neck Art Colony featuring Barbara Moody; *The Charles Olson Lecture Series* featuring Amiri Baraka, in partnership with the Charles Olson Society and the Gloucester Writers Center; the *Schooner Festival* with Maritime Gloucester and the annual *Middle Street Walk* with various community organizations.

We also continued our on-going work with area homes for the elderly and senior centers through our CAM Connections program, sponsored by Mass Humanities, and the Llewellyn and Forest Foundations.

Also of note was the completion of our third docent training program which increased our total number of volunteer Associates to thirty-two.

## YOUTH AND FAMILY PROGRAMS

The Museum was pleased to offer a series of programs in 2013 designed especially for children and their families, including the following:

- Three memorable *Saturday Showcase* events sponsored by the Goldhirsh Foundation: *Katy and the Big Snow* with Cape Ann Symphony; Celebration of children's book author Frances Wosmek; and a book reading and sing along with Daisy Nell and Captain Stan.
- *Second Saturdays Family Fun Free Days*, sponsored by the Tower Foundation, brought 700 children and families into the Museum, many for the first time.
- *Young at Art for Head Start* sponsored by the McCarthy Family Foundation – a special program which welcomed more than 30 visits from students in Cape Ann's Pathways for Children.
- The launch of the pilot program *Artistic Bridges* in collaboration with the Gloucester Education Foundation and the Gloucester Public Schools designed to bring artists into core curriculum classrooms.

The Museum also welcomed students from local and international schools, preschool-aged through college, and participated in the following community-wide events: Gloucester Public Schools Arts Festival, the Cape Ann Family Fun Fair and the Cape Ann Farmers' Market.

The Museum is committed to offering collaborative programs in partnership with local educational, cultural and civic organizations to contribute to the cultural vitality of our communities.

2013 highlights include the Museum playing leadership roles in the Gloucester Education Foundation's Public School Arts Festival, the annual Middle Street Walk, the development of the HarborWalk and the Downtown Cultural District designation. The success of these initiatives results in a stronger appreciation of the region's cultural assets. Please see a complete list of our collaborations in the adjacent *Programs and Education Report*.



Children's book author Frances Wosmek (seated) with her daughter Robin Brailsford and a young admirer during a *Saturday Showcase*.



Funding for these programs was made possible through a grant from the Massachusetts Cultural Council, a state agency, which promotes excellence, access, education and diversity in the arts, humanities and interpretive sciences, in order to improve the quality of life for all Massachusetts residents and to contribute to the economic vitality of our communities.



**DAVID DEMAINE**  
(1948–2013)

David Demaine was one of the two dozen associates who signed up for the 15-month docent training course in 2012. He was a newcomer to Gloucester: a retired classics teacher from the Northfield Mount Hermon School who had moved with his wife and fellow teacher Gail to Magnolia barely two years earlier. He plunged enthusiastically into the docent training program, spending hours in the CAM archives

David Demaine and Rufus Collinson at the Museum in 2012.

and the Sawyer Free Library to learn about Gloucester's history and its people. He immersed himself in the Cape Ann community in a wide range of other activities: joining the Unitarian Universalist Church, reading poetry at the Gloucester Writers Center, volunteering at Pathways for Children, and participating in three separate book groups.

David's life was marked by tragedy: his second son Matthew died in 2001 at the age of 20; his wife Gail died in January 2012, and David himself had been badly injured in an automobile accident years before that left him limping and in pain from a shattered hip. Not long after his docent training was completed in spring of 2013, David's health problems began to multiply. Just as he prepared to have surgery on his hip, he was diagnosed with cancer, and on December 5 he died at the age of 65.

David would have been a huge asset to the Museum. His radiant smile, his boundless enthusiasm, his natural abilities as a teacher (at least two of his Northfield Mount Hermon students rated him "awesome" on teacher evaluation forms), and his endless curiosity made it a particular pleasure to deal with him as a friend, a colleague, and a teacher. A conversation with David – for anyone, on almost any topic – was an inspiring learning process.

David's untimely death was a great loss to the Cape Ann Museum, and to the entire Cape Ann Community.

– Tom Halsted, *friend and fellow Associate*

## FRIENDS AND VOLUNTEERS

WE ARE DEEPLY GRATEFUL TO OUR FRIENDS AND VOLUNTEERS WHO PLAY A VITAL ROLE IN ADVANCING THE MUSEUM'S MISSION. THEY SHARE THEIR TIME, EXPERTISE AND ENTHUSIASM AND SERVE AS THE MUSEUM'S AMBASSADORS TO THE LARGER COMMUNITY.

### Associates/Docents

Gail Anderson  
Val Babson  
Selma Bell  
Sheila Blake  
Beth Brau  
Max Callender  
Anne Babson Carter  
David Demaine  
Sharon Deveny  
Dawn Dexter  
Anita Freeman  
Judy Friend  
Pippy Giuliano  
Marion Hall  
Tom Halsted  
John Huss  
Sandra Seppala Jamieson  
Bruce Jones  
Charles Marcous  
Sarah Mowitt  
Stevie Neal  
Elaine Ohlson  
Trudi Olivetti  
Ann Pulver  
Mary Rhinelanders  
Anne-Seymour St. John  
Sally Simons  
Trina Smith  
Carol Stearns  
Ingrid Swanson  
Matt Swift  
Bonnie Sylvester  
Hazel von Rosenvinge  
Miriam Weinstein  
Patsy Whitlock

### CAMafterhours Committee

Jennifer Amero  
Nissa Delaney  
Kelsey McNiff  
Allison Mueller  
Lisa Rich

Rebecca Sorenson  
Sarah Swift  
Heidi Wakeman

### Collections/Education/Programs

Les Bartlett  
Linzee Coolidge  
Deanie Hancock  
Rob Newton  
David Rich  
Erik Ronnberg, Jr.  
Brad Story  
William Traves  
Michael Wall

### Fitz Henry Lane Committee

Hope Bachelder  
Jackie Bell  
Jill Bell  
Bonnie Covington  
Kathy Galligan  
Susan Goodchild  
Christine Lundberg  
Jenifer McDougall  
Leslee Shlopak

### Folly Cove Designers Committee

Deb Carlson  
Beth Coolidge  
Bonnie Covington  
Rose-Marie Glen  
Christine Kahane  
Christine Lundberg  
Grace Murray  
Lee Natti  
Susanna Natti  
Mary Granfield  
Brenda Richardson  
Candace Wheeler  
Patsy Whitlock

### Fresnel Lens Committee

J.J. Bell  
Peter Bergstrom

John Cunningham  
Tom Hovey  
John McGlennon  
Sarah Mowitt  
Arthur Ryan  
Paul St. Germain  
Bill Whiting

### Interns

Kristin Fulford, *Gloucester High School*  
Sophia Haller, *University of Hull, Yorkshire, UK*  
Colleen Hochberger, *Skidmore College*  
Hannah Lundie, *Endicott College*  
Erin Merritt, *Endicott College*  
Sarah Parker, *Endicott College*

### Library & Archives Volunteers

Anthea Brigham  
Sam Ciolino  
Emily Lefferts  
Mary Rhinelanders McCarl  
Bing McGilvray  
Trudi Olivetti  
Rachel Somers  
Howard Thomas

### Program Filming and Recording

Bob Quinn

### White-Elery House Volunteers

William Cross  
Adele Ervin  
William Finch  
Prudence Fish  
Coralie Ingraham  
Helen McCabe  
Don Pollard  
David Rhinelanders  
Carol Rose  
Maggie Rosa  
Bernadine Young



[top] Marine historian and ship model maker Erik Ronnberg makes adjustments to the *Elsie*; CAM Associate Dawn Dexter with her grandson at the Frances Wosmek *Saturday Showcase*; [bottom row] Lampists remove the cast iron base cabinets from the south tower on Thacher Island; Artist Mary Rhinelandt demonstrates block printing techniques; CAM Associate Marion Hall leads a walking tour.

# 2013 FITZ HENRY LANE SOCIETY MEMBERS

## \$5,000

J.J. and Jackie Bell  
Stephen and Jill Bell  
Dorothy A. Brown  
John and Mollie Byrnes  
Ted and Jan Charles  
Herbert Collins  
Linzee and Beth Coolidge  
Christopher and Bonnie Covington  
Alec Dingee and Susan Gray  
Jack Haley and Elizabeth Hughes  
William and Janet James  
Margaret Pearson  
Arthur Ryan  
Robert and Ashley Scott  
Hinda Simon  
Stephen and Lisa Smit  
Richard and Donna Tadler

## \$2,500

Robert and Hope Bachelder  
Kermit and Glenys Birchfield  
Samuel and Rebecca Campbell  
Richard and Deborah Carlson  
Deborah Freeman  
John and Kathy Galligan  
Henrietta Gates and Heaton Robertson  
Thomas and Caroline Hovey  
William and Nancy Lynch  
Amy Moore

Andrew Spindler and Hiram Butler  
Tom and Kristin Zarrella

## \$1,000

Filiberto Agusti and Susan Whilton  
Robert Amory  
Peter and Karen Bell  
Mac Bell  
John and Jan Bell  
Walter and Gina Beinecke  
Deborah Blake  
Kevin and Rosemarie Bottomley  
John and Caroll Cabot  
Thad Carpen and Susanne Guyer  
Bettie Cartwright  
Robert Chandler and Ronda Faloon  
Christopher and Lisa Collins  
Pearce and Phoebe Coues  
Robert Cox and Karen Bell  
William and Ellen Cross  
Robert and Jenifer Culbert  
John and Lee Cunningham  
Philip and Eve Cutter  
David and Mary Dearborn  
Chris and Jane Deering  
Betty Ellis  
Ian and Josie Gardiner  
Darius and Stephanie Gaskins  
Rose-Marie Glen and Clare Bromley  
Mark and Livia Glovsky

Sarge and Susan Goodchild  
Tamara Greeman

Stephen and Marion Hall  
Kathy Hamilos  
James Hand  
Jerry and Margaretta Hausman  
Mary Healy  
Peter and Gerry Herbert  
Samuel and Elisabeth Holdsworth  
Stephen and Missy Kasnet  
Malcolm and Patricia Kerstein  
Jan Koch-Weser and Diane Chen  
Catherine Lastavica  
Paul and Jackie Littlefield  
Angus and Leslie Littlejohn  
Joan Lovejoy  
Paul and Christine Lundberg  
Doris Lynch  
Marietta Lynch  
Elton and Connie McCausland  
John and Mary Ann McCormick  
Dan and Jenifer McDougall  
Roger and Carol McNeill  
Anne Meyer  
Richard Mills  
Stuart and Elizabeth Moore  
Joseph and Eileen Mueller  
Greg and Stevie Neal  
John and Pam Newberry

Myranda O'Bara  
John and Sarah Hollis Perry  
George and Kathy Putnam  
George and Nancy Putnam  
John Rando

Judson and Lisa Reis  
David and Lisa Rich  
Carlos and Diane Riva  
Roger Salisbury and Judith Monteferrante  
Jack and Shelagh Schylling  
Tim and Christy Sheehan  
Thomas and Lyn Shields  
Leslee Shlopak  
James and Kate Stavis  
Campbell and Grace Steward  
Peter and Lynda Surdam  
Ingrid Swanson  
Lynn and Joan Swigart  
Robin and Martha Tattersall  
William and JoLinda Taylor  
William and Virginia Townsend  
William and Roswitha Traves  
Ernst and Gail von Metzsch  
Michael and Tee Wall  
Scobie Ward  
Harold and Lucette White  
Grant and Hope Winthrop  
Clive Wood and Stella Martin

## MEMBERS

THE CAPE ANN MUSEUM DEPENDS ON THE GENEROSITY AND GOOD WILL OF THE PEOPLE AND INSTITUTIONS WHO SHARE A BELIEF IN ITS MISSION. THE MUSEUM GRATEFULLY ACKNOWLEDGES THE MUSEUM MEMBERS WHO HAVE SUPPORTED THE MUSEUM THIS YEAR – JANUARY 1, 2013 TO DECEMBER 31, 2013.

**BENEFACTORS \$500**

Mary Barcus  
Nancy Barnett  
Allan and Kathe Cohen  
Justin and Kari Gale  
Ronald Glick and Sarah Robbins-Evans  
Garth and Lindsay Greimann  
Richard and Joan Gross  
Chris and Sue Klem  
Noel Mann and Daan Sandee  
Henrietta Meyer  
Donald Saunders and Liv Ullmann  
Tom and Sally Simons  
David Tufts

**SPONSORS \$250**

Stefan and Barbe Abramo  
Barby Almy  
Norma Andrews  
Devereux and Jilda Barker  
Tom and Becky Bernie  
Standish and Brigitte Bradford  
Judson and Jan Carlberg  
David Condino and Margaret Brady  
Diana Connors  
Janet Cookson  
Nathaniel and Catherine Coolidge  
Nancy Corral  
Martin and Natalie Daley  
George Davis and Lisa Bonneville  
John Easton and Sem Sutter  
Adele Ervin  
Diane Faessler  
Peter and Annette French  
Howard and Naomi Gardner  
Jack and Susan Gardner  
Jonas Gavelis and Bonnie Sylvester  
Phil Goldsmith and Melissa Boshco  
Mark and Janet Gottesman  
Chris Hadley and Scott Smith  
William and Rose Hausman  
Robert Henriques and Jane Singer  
Kenneth and Anne Herman  
Ken and Billie Hruby  
Helen Joseph  
Ken and Cathy Kaplan  
Tom and Maryanne Kiely

William and Anne Kneisel  
Stephen and Sigrid Lindo  
Mark and Martha Lindsay  
Robert and Joan Lockwood  
Jane Lyman  
Daniel and Marcy Lyman  
Charlie and Janet Marcous  
David and Louise Marsh  
James and Dorothy Matthews  
Alex and Julie Matz  
Robert and Eileen Matz  
William and Jane McConnell  
Susan McKain and Ken Steiner  
Jay McLauchlan and Sara Stotzer  
Christine Moore  
Henry and Valerie Moore  
Lee Natti  
John and Olivia Parker  
Christopher and Esther Pullman  
Anthony and Clare Quinn  
Robert and Susan Reece  
John and Jean Rees  
David and Ann Rhinelander  
Stuart Scantlebury and  
Lecia Ann Turcotte  
David and Marie Louise Scudder  
David and Ann Simmons  
Steve and Linda Sojda  
David and Ginni Spencer  
Nancy Strisik  
Howard and Betty Thomas  
Yuri Tuvim and Mary Louise Giuliano  
Douglas and Priscilla Viets  
Robert and Margaret Wallis  
Mike and Candace Wheeler  
Richard and Deirdre White

**CONTRIBUTORS \$100**

Raymond Agler and John Carter  
Elizabeth Akerley  
Eugene Alves  
Edward and Mary Anderson  
Gail Anderson and Bill Effner  
William and Yvette Anderson  
Anne Babson Carter  
David and Val Babson  
Gordon Baird and Joe Ann Hart

Jim and Chris Barker  
Geoffrey Bayliss  
Barbara Beauchamp and Susan Raymo  
Ed and Sheila Becker  
Jo Ann Bell and Marv Tigue  
Selma and Leslie Bell  
Linda Berard  
Edward and Linda Berger  
Beverly Public Library  
Mr. and Mrs. Allan Bezanson  
Ted and Judy Bidwell  
Barbara Bjornson  
Louise Blodget  
David and Maureen Bovet  
John and Jane Bradley  
Peter and Beth Brau  
Lewis and Miriam Braverman  
Chester and Anthea Brigham  
Elana Brink  
Thomas Brooks and Karen Newman  
Thomas and Mimi Brown  
Robert Brown  
Ralph and Elizabeth Browning  
Lois Brynes and Serena Hilsinger  
Joan Buchanan  
Thomas Burger and André Robert  
Paul Butman and Sharon Lake  
Samuel and Claire Cabot  
Philip Chalmers and Susan King  
Peter and Katherine Coakley  
Kevin and Diane Connolly  
Wendel and Suzanne Cook  
Mike Costello  
Evelyn, Barbara and Judy Cox  
Robert and Jan Crandall  
Ray and Monica Crane  
Albert and Hilary Creighton  
Robert and Jean Cunningham  
Alev Danis and David Moschella  
Jack and Betty Davis  
Craig and Laurel Deery  
Robert and Ann DeMaine  
Aristides Demetrios  
Steve and Dawn Dexter  
Steven Dieck and Hatsumi Miura  
Jim and Fafa Diedrich  
Patricia Donahue and Greg Sacca

Sarah Dunlap  
William Duryea and Anne Bowdoin  
Robert and Surrey Elwell  
Robert and Mary Emmons  
Constance Eppel  
Peter and Jan Eschauzier  
Mary Ann Esdaile  
Edward Everett  
Jay and Helen Featherstone  
Peter Feinstein and Miriam Weinstein  
John Gale  
Charles and Jane Gardiner  
David and Alice Gardner  
David Gardner  
Katerina and Timothy Gates  
Joseph and Catherine Geary  
Lester Gimpelson and L. G. Cagnasso  
John and Andrea Glovsky  
Lia Glovsky  
Gordon and Judith Goetemann  
Ruth Goodick  
Joyce Griffin  
James and Katherine Groves  
Henry and Gail Guild  
Judy and Carl Gustin  
Douglas and Susan Hall  
James and Leslie Hammond  
Mimi Harper  
Jane Harris  
David and Michele Harrison  
James and Mary Hayes  
Bruce and Meg Herman  
Janet Herrmann  
Susan Herron  
Hal Hirshon and Lois Goodell  
Eloise Hodges  
Harry and Judith Hoglander  
Charles and Nancy Hovey  
John and Sally Huss  
Robert and Pamela Irwin  
Robert and Patricia Jedrey  
Karen Johnson  
Carol Judd  
Stephen Kaloyanides  
Eileen Kelley  
Carolyn King  
Eric and Johanna Kreilick

**FITZ HENRY LANE \$2,500**

Cape Ann Savings Bank

**FITZ HENRY LANE \$1,000**

Bomco  
Building Center  
Cape Ann Marketplace  
Carroll Steele  
Insurance Agency  
J. Barrett Real Estate  
Frank Vanzler, KVA Associates  
Mercury Gallery  
Nor'East Cleaners  
Sudbay Automotive Group  
Timothy S. Hopkins Catering  
Women on the Move

**BENEFACTORS \$500**

Ambient Temperature  
Atlantis Oceanfront Inn  
Common Crow  
Cricket Press  
Cruiseport Gloucester  
Gorton's Seafood  
Sonolite Plastics  
Timberline Enterprises  
W. Herbert Goodick

**SPONSORS \$250**

Glovsky & Glovsky  
Pasquina Law Office  
Pulsifer & Associates  
Rockport National Bank  
Sea Lion Motel  
Vista Motel

**CONTRIBUTORS \$100**

Again & Again  
BankGloucester  
C.B. Fisk  
Cape Ann Insurance Agency  
Cape Pond Ice Company  
Chalmers & Associates  
Coldwell Banker  
Essex Alarm and Security  
Halibut Point Restaurant  
Hershey Frame Shop  
Roy Spittle Associates  
Sue Henderson Ed Consulting  
TD Bank  
Trident Gallery  
Wells Fargo Advisors

*The Museum makes every effort to ensure that our lists are complete and accurate. If you believe there may be an error or omission, please notify us.*



Bob Whitmarsh with Marion and Stephen Hall at the *Four Winds* opening reception.

Miles and Joan Kulukundis  
 Martha Kurz  
 Hamer and Charlotte Lacey  
 Doug and Sylvan LaChance  
 Ellen Landrigan  
 Stephen and Janet Langer  
 Joseph and Karolina Latronica  
 Thomas and Grace Lattof  
 Milt and Helen Lauenstein  
 Robert and Martha Lawrenz  
 Michael and Nancy Leavitt  
 Kenneth and Royce Leonards  
 Michael Lipton and Catherine Bayliss  
 Richard and Pamela Loomis  
 Peter and Elaine Lucas  
 Nancy Lui-Kwan  
 Sheila Lummis  
 Matthew and Rosemary Lundberg  
 Mary Malone  
 Bob and Nancy Marculewicz  
 John and Ethel Martin  
 David and Janet McAveaney  
 Shelagh and Roy McCauley  
 Dennis McGurk  
 Ted and Dee Meeker  
 Deborah Meiselman  
 David and Judy Messick  
 David Michael  
 Merritt and Linda Miller  
 Carl and Shirley Moores  
 Michael and Kathleen Morelli  
 Wendy Morgan  
 T. Lincoln and Mary Lou Morison  
 Fred and Elizabeth Morris  
 Dan and Beth Morris  
 Sarah Mowitt  
 Paula Mullendore  
 Ronald Nickerson

Scott and Grace Offen  
 David Olsen  
 Elizabeth Olson  
 Jerrold Oppenheim and Theo MacGregor  
 Rick and Alice Osgood  
 Leonard Parco  
 Davis and Deborah Pearce  
 George and Joann Phillips  
 Ralph and Kathleen Pino  
 Paul and Carolyn Pitman  
 Ted and Kathy Pomfret  
 M. J. Powell  
 Oliver Radford and Stephen Perry  
 Suesan Randlett and David Hunter  
 Bob and Jan Randolph  
 Mark and Laurie Raymond  
 Elizabeth Rhineland and  
 Peter MacEwen  
 Benjamin and Courtney Richardson  
 Bud and Margaret Ris  
 George and Daphne Roark  
 John Ronan and Sandra Dahl-Ronan  
 Joseph and Maggie Rosa  
 George Rosen and Barbara Gale  
 Andrew Rosenberg and Marian Zeles  
 Melvin and Martha Rosenblatt  
 Steve and Kit Rosenthal  
 Ronald Ross and Mary Benham  
 William and Susan Ross  
 Cynthia and Albert Roth  
 Edward and Susie Rowland  
 Caleb Rulli  
 Stephen Sacca and Janet Ulwick-Sacca  
 Jeffrey and Christa Sammons  
 Russell Sandfield and Sabine Ralston  
 Virginia Scott  
 Claudine Scoville  
 Paul and Dona Shea

George and Ellen Sibley  
 Christopher and Cary Smallhorn  
 Wayne and Heather Soini  
 Richard and Joann Southgate  
 Frank and Jeanne Speizer  
 Lee and Hazel Spence  
 Eileen Sporing and Jocelyn Ramella  
 Robert Stern and Gail Howrigan  
 Judith Strohm  
 John Stute and Zoe Stewart  
 Donald and Phyllis Sudbay  
 James and Tom Sutherland  
 Brian Tarr  
 Joyce Thomas  
 John and Marilyn Thompson  
 Noel and Judith Thyson  
 Linda Tosi  
 Blair and Sarah Villa  
 Regina Villa  
 Judith Walcott  
 Graham and Jan Walker  
 Stephen and Anne Warhover  
 Corinne Waring  
 Cornelius Waud  
 Barry and Susan Weiner  
 James and Virginia Welch  
 Bruce Welty and Rachel Perry Welty  
 Anthony and Joreen White  
 Bradford and Geneva Whitten  
 Ted Widmer and Mary Rhineland  
 Fritz and Peggy Willmann  
 Oliver and Carolyn Wolcott  
 Jane Wolf  
 Suzanne Ziemer  
 Jason and Margaret Zorfus

**MEMBER/MEMBER+ \$45 to \$75**

Mim Aaronian  
 Mr. and Mrs. Gordon Abbott  
 Jerry and Carol Ackerman  
 Robert Ackerman  
 George and Allison Adam  
 Jeremy and Kathleen Adams  
 Amory and Deborah Aldrich  
 Willie Alexander  
 Marie Alfieri  
 Francis and Rebecca Aliberte  
 Nancy Alimansky  
 Herbert and Catherine Allard  
 Allen County Public Library  
 Louise Todd Ambler  
 Tom Amend and Elizabeth Bish  
 Linda Amero and Hank Turgeon  
 Linda Ames  
 Peter Anastas  
 Patricia Anders  
 Bob and Judy Anderson  
 Bob and Peg Anderson  
 Mr. and Mrs. George Anderson  
 Anne-Marie Anderson

Eben and Sandy Andrew  
 Thomas and Nancy Andrew  
 Willard and Linda Andrews  
 Bonnie Angus  
 Jean Anjoorian  
 Rory and Jean Anscombe  
 Jean Appelftoft  
 John and Sarah Appleton  
 Max and Denise Arai  
 Linda Ashley  
 Ronald Atwood  
 James Avallon and Michael Gendre  
 Joanne Avallon and Kurt Ogle  
 Merribel Ayres  
 Isobel Baade  
 Jim and Kathy Bacsik  
 Thomas and Shiela Baker  
 Tom Balf and Donna Heaney  
 Nancy Balf  
 Ann Banks  
 Les Bartlett  
 John Bassett and Christina Wolfe  
 Joe Bayes and Lynda Goldberg  
 Ann Baylies  
 Kenneth and Helen Beal  
 Beate Becker-Vavak and Stephen Vavak  
 Pat Beckett and Lorna Condon  
 Diana Bell  
 Timothy Bell  
 Corina Belle-Isle  
 Robert and Marilyn Belliveau  
 John and Ann Berges  
 Peter and Joyce Bergholtz  
 Shari Berkal and Bruce Lascola  
 Sam and Vivian Berman  
 David and Lida Bernard  
 Linda Berry  
 Anthony and Patricia Bertolino  
 Deborah Beveridge  
 Jonathan and Diane Bevins  
 Barbara Beyea  
 Bradford Bigelow  
 Charlotte Bishop  
 Julia Bishop  
 John and Cynthia Bjorlie  
 Sheila Blake  
 John Blanding  
 Marie Blanding  
 Dale Blank and Tom Fox  
 Bernice Blitz  
 Judith Bly and Abraham Newman  
 Eric and Adrienne Boeker  
 Steven and Susan Boshi  
 Martha Bowen  
 Kent and Joanna Bowker  
 Glenn and Jane Bowles  
 Babette Brackett  
 Barbara Brackett  
 Loring Bradlee  
 Bruce and Joan Bradshaw

Sally Bradshaw and Dottie Murkland  
 Robert and Lori Bradshaw  
 Suzanne Brailey  
 R. Billings Bramhall  
 Peter and Linda Braun  
 Alan and Barbara Braver  
 Ron Breault  
 Donald and Katherine Breen  
 Lise Breen  
 Barbara Brewer  
 Mr. and Mrs. Stephen Bridges  
 Barbara Bridges-Elliott  
 Linda Briggs  
 Susan Britt  
 Bob and Faye Brophy  
 Doug and Cassie Brown  
 Mike and Betsy Brown  
 Jane and Laura Brown  
 Shepard Brown and Elisabeth Simonds  
 Elaine Brown  
 Carolyn Buckley  
 Philip and Lois Budrose  
 Joy Buell  
 Mary Burgarella  
 Angela Burke and Jane Burke-Miller  
 Charles and Maria Burnham  
 William and Sharon Burton  
 Joseph Butler and Nancy Davis  
 Bill and Gerrie Butman  
 Ann Byers  
 Josh and Christina Cahill  
 Peggy Cahill  
 Elizabeth Calder  
 Andy and Peggy Calkins  
 Jim and Charlene Callahan  
 Bruce and Ann Campbell  
 Marie Campello  
 Douglas and Sarah Caraganis  
 Edward Carberg  
 Barbara Careaga  
 Jonathan and Jill Carey  
 Karen Carpenter  
 Randy Carr and Gabrielle Barzaghi  
 Marty Carriker  
 John and Anne Carty  
 Francie Caudill  
 Verne and Madeline Caviness  
 Ninon Chaet  
 Lawrence Chakrin  
 Karen Chellquist  
 Michael and Jill Chipperini  
 JoAnne Chirico  
 Bradford Chisholm and Gail Smith  
 Nathaniel and Hester Clapp  
 Chester and Ellen Clark  
 Elaine Clark  
 Jack Clark and Fara Courtney  
 Debbie Clarke  
 Mrs. William Clarke  
 Gail Clifford



James Clyde	Margaret Donahue	Caroline French	Laura Hallowell	Abigail Kaiser
Dana and Virginia Cohen	Richard Douglas	Deane French	Tom and Joy Halsted	David and Meredith Kantor
Dave and Sharron Cohen	Sandra Douglas	Katherine French	Isabella Halsted	Michael and Barbara Kaplan
Irma Cohen	Barbara Drake	Linette French	Lauren Hamilton	Carol Karlson
Nathan Cohen	William and Jean Dugan	Terry and Elizabeth French	Hamilton-Wenham Public Library	Joy Kasmer
Frances Colburn	Patricia Dumas and Esther Joyce	Dagmar and Ephraim Friedman	Marion Harding	Donna Katan
William and Betsey Colby	Karen Dyer	William and Judy Friend	Edward and Jackie Hardy	Suzanne Kaufman
Doris Cole	William and Deborah Ebeling	Bob and Jeanne Frishman	John Harrington and Deborah Marston	Shayla Kaufmann and Paul Swigart
Hugh and Joan Collier	Roger and Ruth Edmonds	Wendy Frontiero	Carolyn Harris	Reed Kay
Bob and Sally Collini	Carolyn Edwards	Marion and Martha Frost	John and Kathy Harris	Christine Kaye
Patricia Conant	Jane Edwards	William and Bonnie Gale	Katrina Hart	Johanna Keefe
Pat and Anna Conlon	John and Janet Egan	Dorothy Ganick	Edward Hart and Family	Barbara Kelley
John and Polly Connors	Carleton and Virginia Ekborg	Barbara Gannon and Robert Sullivan	Brett Hayes	Paul and Leah Kelley
Cleveland Cook	Martha Elder	Evelynn Gariedy	Steve and Martha Heassler	Fred and Lenore Kepler
Linda Cook	Morgan Eldridge and Sheldon Sayre	Helen Garland	Leslie Heffron	Michael and Fiona Kerr
Jay Cooke	Celia Eldridge	Gerry and Eloise Gehr	Robert Heinman and Susan Field	Phyllis Kerr
Peter and Connie Corbino	Deborah Eliason	Adena Geller	Bill and Joy Hennessey	Thomas and Laura Kerr
Laurie Corral	Albert Ellis and Anne Seymour-St. John	Myron and Eileen Geller	Gale Hermanet	John Keyes
Kathryn Costa	Tom and Kay Ellis	Robert and Mary Gerbrands	Richard Heuser	Marilyn Kimball
John Costa	David and Susan Emerson	Brooks and Whitney Gibson	Sheila Higgins	Peggy Kimball
Mary Couchman	Gary Emmer	Leonardo Gilardi	John Hinckley	Mark and Judith King
Audrey Coughlin	Tom and Diane Emmons	Robert Gillis and Pixie Harrington	Margaret Hinrichs	Elizabeth King
Deborah Cowan	Dominic and Tamsen Endicott	Ron and Joan Gilson	John Hintlian	Priscilla Kippen
David Cox	Barbara Erkkila	David and Regina Girard	Estelle Hochberg	Earl and Sharon Kishida
Kitt and Theresa Cox	Betty Erkkila	Charles Gladstone and Elaine Souza	Ann Hochberg and Howard Weinstein	Jerome and Linda Klein
Evelyn Craaybeek	Susan Erony	W. Foster Glover	Nancy Hodgkins	John and Lois Knaus
Paul and Carol Craig	Charles and Caroline Esdaile	Tony Goddess	Rollyn and Judith Hoffman	Elizabeth and Dana Knowlton
Mary Lou Crane	Patricia Evans	Josette and Louis Goldish	Susan Holden	James and Betty Knott
Roger Cressey	Dimitri Fane	Jay and Kathleen Goldman	Eric and Hilarie Holdsworth	John and Colette Knowlton
Denton Crews and Katherine German	Jamie and Amy Fanning	Curtis Gollrad and Dale Brown	Harriet Holdsworth	Paula Knuuttunen
Robert and Ruth Crocker	Mark and Amy Farber	Leonard and Cheryl Goodman	Nick and Debe Holland	Neil Kobrosky and Linda Gipstein
Damon and Melissa Cummings	Ron Farren and Kristal Pooler	Peter and Jan Goodwin	Herb and Meg Hollender	Peter and Karen Koch-Weser
Pat Cummings	Nadine Febbrile	Gary and Karen Gorczyca	Kathryn Hollett	Mark and Heather Kolnsberg
Joan Cumiskey	Phyllis Feld	Carmine and Joan Gorga	Bob Holloway and Christina Doyle	Susan Kolwicz and Ken Parker
Jim and Karen Cunningham	Cathy Felton	Joan Gorton	John and Elizabeth Holmberg	Janice Koskey
Andrew Cunningham and Kelsey McNiff	Bill and Lyn Fenollosa	Michael and Karen Gorton	Stephen Holt	Pete and Bobbi Kovner
Henry and Judith Curtis	Ricardo Fernandez and	Michael and Patricia Goulart	William and Lynne Holton	John and Janet Koza
Elizabeth Hope Cushing	Diana Brooks Keller	John and Rebecca Graham	Sarah Honenberger	Bruno and Barbara Kozel
Marinus Cutler	Lee Fernandez	Richard Graham and Jane McKeel	Lorraine Horn	John and Carmela Krasnakevich
Jennifer Dahlgren	Jane Ferreira	Patrick and Naomi Gray	Stephen and Jeanne Howard	Norman Krause
Susan Daly	Virginia Field	James and Helen Greely	Jay and Louie Howland	Michael Kressley and
Mary Lou Dana	Adam and Nina Fieldsteel	Margi Green	Eleanor Hoy	Wendy Riggs-Smith
Carl and Mimi Darrow	William Finch and Carol Rose	David and Katherine Greenberg	Melinda Huff	David Kriebel and Margaret Quinn
Chandler and Nancy Davis	Guy and Andrea Fincke	Barbara Greenberg	Daniel and Priscilla Hurley	Marvin Kushner
Donna Davis	Prudence Fish	David and Janet Grey	Bette Hutchins	Mark Lacey and Susan Fehrmann
John and Sharon Day	Mary Ann Fisher	Stephen and Linda Greyser	Barbara Hyams	Andrew and Grace Ladygo
David and Sara de la Barre	Lyn Fitzgerald	Gary Griffis and Leslie Pearlman	Shelby Hypes	Michael and Ann Lafferty
Mr. and Mrs. Pierre DeBeaumont	Newell and Kate Flather	Paula Grillo	Coralie Ingraham	Mark Laliberte
Charles and Barbara DeCoste	Colin Fleming	Paul Gross and Cornelia Tenney	Paula Ives	Arline Land
Debbie DeCotis	Margie Florini	Anthony Gross	Nancy Ives	Maria Lane
Jacqueline and Michael DeFalco	Richard and Diane Foley	Margaret Guest	William Jackson	Gerrit Lansing
David Demaine and Ruthanne Collinson	Paul Forman	Gail Guittarr	Sandra Jamieson	Ramona Latham
Virginia Dench	Heidi Forrester	Craig and Louise Gustafson	Steve and Debby Jencks	Jack and Susan Lawrence
Charlesanna Detra	Gregg and Martha Fox	Janis Guter	Peter Jenner and Carolin Catalano	John and Martha Lazarus
Jim and Sharon Deveney	Karl and Joan Frank	Robert and Judith Gwozdziwicz	Mayo and Julie Johnson	Margery Leach
David Devicq	Audrey Fraser and Richard Stoloff	Sarah Hackett	Diane Johnson	Christopher and Kathryn Leahy
Bruce and Veronica Devon	Joseph and Christine Frassica	Thomas and Barbara Ann Hale	Bruce Jones and Tina Cross	Edwin and Marcia Leavitt
Anita Diamant and Jim Bell	Paul Frazier	Myra Hall and James Tolman	Paul and Sarah Judge	Brenda LeClerc and Laurel Seneca
Brenton and Elizabeth Dickson	Walter Fredrick	Kathy Haller	Margaret Justice	Nancy LeGendre and Walter Herlihy
Franklin Doeringer	Anita Freeman and Phillip Albright	Christopher and Joanne Halligan	Stephen and Christine Kahane	John LeJeune and Mary Donovan

## MEMBERS and FRIENDS

The Museum hosted a number of special events for members and friends in 2013.



[from top to bottom] Jessica Bryant, Rebecca Bell Sorensen, and Gail Albert Halaban at a CAM afterhours event; Amiri Baraka signs a book for Peter Anastas following the Charles Olson Lecture at the Museum last year; Sarge Goodchild, Janet James, Tom Zarrella and William James at the Captain's Party; FHL Society members visit a gallery in Manhattan during the annual FHL Fall Art Trip.

Roger and Pamela Lemire  
Wayne and Marguerite Lemmon  
Janet Lemnah  
Martha Lennon  
Richard Leonard  
Peter and Roxanna Leone  
Lucille LePage  
Janet Lepanto and Richard Metzinger  
Mary Ellen Lepionka  
Roger and Susan Levine  
Barbara Liggett  
Marian Linden  
Carol Linsky  
Selina Little  
Brooks Lobkowitz  
Maryjane Long  
Deborah Loomis  
Richard Lord  
Fred and Jill Lovejoy  
Margaretta Lovell  
Philip Lowcher  
Jim and Laura Lowell  
Beth Luchner and Jeffrey Berman  
Robert Lufkin  
Fitz and Marianne Lufkin  
Monique Luijben  
Nicholas Lynch  
Jeannine Lynch  
Douglas and Anna MacArthur  
J.D. MacEachern  
Edward and Norma Mahoney  
Donald Maier  
Tim and Stephanie Malarkey  
Costa Maletskos  
Harold and Cynthia Mallette  
Maureen Malloy  
Peter Maltzan  
John and Christine Maney  
David Manley and Nancy Shorter  
Theodore Lane Manning  
Michael March and Elizabeth Mehlin  
Jeannette Marchant  
Richard and Donna Marchant  
Carleen Marchi  
Charles Marcous  
Joseph Mari  
Virginia Markell  
Adah Marker  
Louise Marks and Faye Bergsman  
Anthony and Maria Marolda  
Susan Marr  
Lee Marshall and Paul Goldberg  
Shirley Marston  
Robert and Meredythe Martinez  
Dorothy Martins  
Jean Marzollo  
Bob and Kat Masella  
Connie Mason  
Michele May and David Walt  
Mr. and Mrs. Alfred Mayor

Cheryl Mazer  
Valerie McCaffrey  
Henry and Mary McCarl  
Frances McCarthy  
Kathie McCarthy  
Seania McCarthy  
John McClellan  
Judith McCulloch  
Kevin McDonough and Susan Lillis  
Scott and Mimi McDougal  
Paul and Catherine McGeary  
Robert McGillvray  
John and Mary Jane McGlennon  
Juliana McGovern  
Walter and Joyce McGrath  
Michele McHugh  
Athena McInnis  
Jeannie McIntyre  
Ann McKay  
Carol McKenna  
Carol McKnight  
Clifford and Carole McLellan  
Jane Mead  
Joseph Mechem  
Adriana Mederos and Stephen Black  
Natalie Medici  
Linda Medwid  
Robert and Mary Mehlman  
Michael and Heli Meltsner  
Ruth Menicocci  
Joseph Mesquita  
Thomas and Jo-Ann Michalak  
Walter Miller and Bernadette Carr  
Margaret Mills-Michael  
Patricia Mitchell  
Daniel Mituik  
Lila Monell  
Robert Monroe  
Jim and Mary Jo Montagnino  
Jane Montecalvo  
Jack and Laura Montgomery  
Janet Montgomery  
John and Edith Montgomery  
Frances Moon  
Veronica Morgan  
Nancy Morgan  
Jim and Kris Moroney  
John and Shirley Morris  
Kathy Morris  
Paul Morrison  
Jon and Carol Morse  
Priscilla Moulton  
Geoffrey and Barbara Movius  
Ed Mowrey  
Joe and Allison Mueller  
Robert and Barbara Muldoon  
Kerry Mullen and Deb Hardy  
Eileen Muniz  
Owen Murphy and Courtney Cronin  
David and Grace Murray

Richard and Liz Murray  
Avis Murray  
Mark and Melanie Murray-Brown  
Paul Nace and Sally Jackson  
Pia Nadel  
Arthur Nash  
Amanda Nash  
Scott Nason  
Judith Nast  
George and Grace Neilson  
Hart Nelsen  
Barbara Nelson  
Dorothy Nelson  
Duncan and Beebe Nelson  
Ellen Nelson  
Mark Nelson and David Oliver  
Valerie Nelson  
William and Marie Neuhauser  
Elizabeth Nicastro  
Ann Nichols  
Andrew and Catherine Nickas  
Ben Niedermeyer and Joanne Hidaka  
Thomas and Louise Mary Nolan  
Claire Norton  
Marcia Norton  
Richard Norton  
Grace and Giuseppe Numerosi  
Carla Ober  
Gail O'Docherty  
James O'Gorman  
Jean Baer O'Gorman  
Patricia O'Hare  
Elaine Ohlson  
Thomas O'Keefe  
Michael O'Leary  
Sarah O'Leary  
Judith Oleson  
Mary Oliverson  
Jim and Trudi Olivetti  
Deb Olken  
Craig and Lillian Olmsted  
John and Jane Olson  
Judy O'Malley  
Philip O'Neil and Lynn McWhood  
Elizabeth Only and Sean Recroft  
Robert Oot and Carol Robey  
Kay O'Rourke  
Frances and Robert Osten  
Jonathan Ostrow and Deborah Helsberg  
Samuel and Elisabeth Otis  
Sydney Owens and Carl Weggel  
Thom Padick and Joan Flynn  
Robin Paine and C. Wood  
Bill Palmer and Anne Robinson  
Walter and Sandra Palmer  
Eric Palson  
Bill Pappas  
Elizabeth Parillo  
Grace and Noelle Parisi  
Christy Park

Gregg and Susan Parsons  
 Peter Parsons  
 Stephen and Lea Parson  
 Sandra Pascal  
 Phyllis Paster  
 Nancy Patterson  
 Jane Paznik-Bondarin and Andrew Kaelin  
 Carolyn Pearce  
 Sue Ann Pearson  
 Ronald and Margaret Perrin  
 James Perry  
 Barbara Perryclear  
 Georges and Carolyn Peter  
 Karen Petersen  
 Karin Peterson  
 Marcia Faye Peterson  
 Pat and John Petrou  
 Steven Phillips and Amy Gault  
 Peter Phillips  
 Sarah Picone  
 Florence Pilz  
 David and Joanna Pistenmaa  
 Vanesa Pliura  
 Irv and Janet Plotkin  
 Sarah Plows  
 David Porper  
 Lucy Potter  
 Jenna Powell  
 Michael and Julianne Powers  
 William and Katharine Prater  
 Frank and Ellen Previte  
 Mary Alice Price  
 Will and Elizabeth Prickett  
 Esther Proctor  
 Ronald and Mimi Pruett  
 Agnes Puff  
 Bob and Ann Pulver  
 Hans Pundt and Lynne Sausele  
 Mary Putonen  
 Robert Quinn  
 Beverly Quint  
 Christina Rafter  
 Herb Randle  
 Robert and Susan Ranta  
 John Ratti  
 Janet Rattray  
 Catherine Rawding  
 Myles Reardon  
 Theodore and Susan Reed  
 Ruth Rehfus  
 Jessie and Andrew Reid  
 Howard and Joan Resnikoff  
 Rebecca Reynolds and  
 David Montgomery  
 Frederic and Patricia Rhineland  
 Lily Rice  
 David Rich  
 Rebekah Richardson  
 Susan Richardson  
 Nicole Richon-Schoel and James Schoel

Elwin and Paula Richter  
 Sheila Rider  
 Thomas and Deborah Riquier  
 Karen Ristuben  
 Bob and Andrea Ritchie  
 Lilian Roberts  
 Rockport Public Library  
 Nellica Rodolosi  
 Elizabeth Roland  
 Erik Ronnberg  
 Barbara Rose  
 Dale Rosen and Terry Segal  
 Michael and Patty Rosenblatt  
 Sarah Rosenbloom  
 Richard and Anne Rosenfeld  
 Alan and Sue Ann Rosenthal  
 Nancy Rossi  
 Dick and Olga Rothschild  
 Carolyn Roy  
 Pauline Runkle and Robert Beurit  
 Teresa Russell and Jeff Rosensweig  
 Robert Russell  
 Tina and Gail Russo  
 Doris Rust  
 Donald and Thelma Ryan  
 Jerome Ryan  
 Maureen Ryan  
 Robert and Debra Ryan  
 Robert and Patricia Ryan  
 Richard and Rosella Sagall  
 John Salisbury  
 Patrick Salony and Christine McGrath  
 James Sanford and Matthew Casey  
 William Sano  
 Diane Sargent  
 Dawn Sarrouf  
 James and Mary Saunders  
 Roger Saunders  
 Curtis and Betsy Sauter  
 Mrs. Donald Sawyer  
 John Schoenbaum and Olga Rakich  
 Eric Schoonover and Susan Pollack  
 Paul and Judith Schroeter  
 William Schulz and Beth Graham  
 Jessica Schwarzenbach and Paul Hackett  
 Claudia Schweitzer  
 Sally Seamans  
 Francis and Barbara Sears  
 Bailey See  
 Roger Serbagi and Nadine Moody  
 Rita Seru-Gardner  
 John and Marcia Seward  
 Bruce and Sandy Shaw  
 Helene Shaw-Kwasie  
 Thomas and Anne Sherman  
 Jack and Judy Shields  
 Jeffrey and Marlene Shindell  
 Gertrude Shoemaker  
 Arnold Shore and Laurisa Sellers  
 Brian Shore

Dianne Shortall  
 Ed and Kaye Lynn Shoucair  
 Davina Shuman  
 Charles Shurcliff  
 Carol Sidlowski  
 Julie Sidon  
 Marcia Siegel  
 Dorothy Sieradzki  
 Ed and Barb Silberman  
 Daniel and Rita Simard  
 Thomas and Lois Simmonds  
 Richard and Priscilla Singleton  
 Marilyn Slade  
 Bruce and Kathy Slifer  
 Helen Sloan  
 Isabel Sloane  
 Richard Sloane  
 John and Betty Smallwood  
 Sally Smithwick  
 Adele Sobel  
 Mary Soderstrom  
 Lisa Soli  
 Rachel and Kate Somers  
 Thomas and Caroline Spang  
 Cecily Spencer  
 Marianne Spencer  
 Newton and Judy Spurr  
 Paul and Elizabeth St. Germain  
 Danuta Stachiewicz  
 Suzanne Stacy  
 Jeremy Stahlin and Judith Fleischman  
 Heather Stanton  
 Elaine Starrett  
 Dr. and Mrs. Henry Steadman  
 June Steel  
 Robert Stefani  
 Mr. and Mrs. Martin Stein  
 Charles and Nancy Steiner  
 Olaf and Hilary Stelling  
 Jane Stempel  
 Phyllis Stevens and Allen Giles  
 John Stevens  
 Jeff and Naomi Stonberg  
 William and Ellen Stone  
 Brad and Beth Story  
 Heidi Stowe  
 Pamela Stratton and Kathryn Tuck  
 Michael and Cheryl Sullivan  
 Jeff Surrette and Cathy McCarthy  
 Patricia Sutherland  
 Martha Swanson  
 David and Linda Swicker  
 Larry and Marilyn Swift  
 Lynn and Joan Swigart  
 Marie V. Swinson  
 Sean and Angela Szuter  
 Cori Taggart  
 Elizabeth Talbot  
 Robert and Holly Tanguay  
 Anthony Tappé

Brent Tarr  
 Mr. and Mrs. Edward  
 Tedesco  
 David and Rita Teele  
 Ann Teixeira  
 David and Mary Thielscher  
 Geoffrey and Annie  
 Thomas  
 Samuel and Elizabeth  
 Thorne  
 Josh and Genine Tillotson  
 Jurrien and Deborah  
 Timmer  
 Peg Timpson  
 Burton Tinker and  
 Ruth Perrault  
 Ed Touchette  
 David Tower and  
 Robin Hoffman  
 Gerry and Polly Townsend  
 Kristen Tozza and  
 Pam Ryan  
 Paul and Maureen Trefry  
 Robert and Joyce Tuffley  
 Mary Tysver  
 Ted Tysver  
 James Utterback  
 Peter and Kathleen Van Demark  
 Juni Van Dyke  
 Allan and Andrea van Gestel  
 Harriet Van Wart  
 Sandra and Nicole Vasapoli  
 Chris and Ellen Velline  
 Beverly Verrengia  
 Robert and Jane Viator  
 Shelley Vincent  
 Christine Virden  
 Joe and Kristie Virgilio  
 Conrad Vitale  
 Anna Vojtech  
 Deborah von Roseninge  
 Dorothy von Roseninge  
 Hazel von Roseninge  
 Ralph and Ana Waddey  
 Heidi Wakeman and Coley Bryan  
 Sage and Linda Walcott  
 Edward and Eva Walker  
 Linda Walker  
 Susan Walker  
 Meg Wallace and Sandy Anderson  
 Alan and Sarah Ward  
 Alexander and Samantha Watson  
 Deborah Way  
 Robert and Mary Weatherall  
 Jeff and Kathy Weaver  
 Gretchen Webster  
 Mary Weissblum  
 Richard and Rosemary Weissman  
 William Wells and Arlene Hill  
 Diana Welsh



Ceramic artist Anni Melançon talks with Associate Sarah Mowitt at the *Cape Ann Artisans at 30* opening reception.

Joseph and Inga Wennik  
 Peter and Thi Linh Wernau  
 Colby and Laura West  
 John Westerberg  
 Natalie Wheeler  
 Vivian Wheeler  
 Kristen Whelan and John Rockwell  
 Bruce and Anne Whilton  
 Susan White  
 William and Deborah Whiting  
 Charles and Patsy Whitlock  
 Robert Whitmarsh and Dolores Laughlin  
 Terri Whitney  
 Alice Whittaker  
 Mr. and Mrs. Robert Whyntott  
 Phil Wilde  
 Peter and Lynne Williams  
 Beth Williams  
 Beth Willis and Julie Wyman  
 John Willis  
 Alan Willsky and Susanna Natti  
 John Wilmerding  
 Arlene Wilson  
 Elinor Winslow  
 Nannie Winslow  
 David and Enid Wise  
 Nanette Witkin  
 Ross and Betsy Wittemann  
 Andrew and Mary Wittkower  
 Roger and Mary Sue Wonson  
 Vivian Wood  
 Bruce and Brenda Woodbury  
 Rebekah Wostrel and Ted Coffey  
 Douglas and Robin Wright  
 Martha Wright  
 Jim and June Wulff  
 Shawn and Mark Young  
 Samuel and Ann Ziergiebel  
 Mr. and Mrs. Don Zowader

# DONORS

THE MUSEUM GRATEFULLY ACKNOWLEDGES THE DONORS WHO HAVE SUPPORTED THE MUSEUM WITH GIFTS THIS YEAR – JANUARY 1, 2013 TO DECEMBER 31, 2013.  
PLEASE NOTE THAT CAPITAL CAMPAIGN GIFTS WILL BE REPORTED IN A SEPARATE DOCUMENT.

## \$100,000 +

Dorothy A. Brown

## \$50,000 to \$99,999

Arthur Ryan

## \$10,000 to 49,999

J.J. and Jackie Bell  
Bruce J. Anderson Foundation  
City of Gloucester Community  
Preservation Fund  
William and Ellen Cross  
Ian and Josie Gardiner  
Humane Society of the  
Commonwealth of MA  
Estate of Nancy Heberle Grayson  
Peter and Geraldine Herbert  
Stella and Charles Guttman Foundation

## \$5,000 to \$9,999

Robert Amory  
Stephen and Jill Bell  
John and Mollie Byrnes  
Peter and Elizabeth C. Tower Foundation  
Ted and Jan Charles

Herbert Collins  
Linzee and Beth Coolidge  
Dusky Foundation  
Chris and Bonnie Covington  
Alec Dingee and Susan Gray  
Betty Ellis  
Jack Haley and Elizabeth Hughes  
Thomas and Caroline Hovey  
William and Janet James  
Stephen and Christine Kahane  
Selina Little  
Margaret Pearson  
John Rando  
Robert and Ashley Scott  
Hinda Simon  
Richard and Donna Tadler

## \$1,000 to \$4,999

Filiberto Agusti and Susan Whilton  
Annisquam Sewing Circle  
Robert and Hope Bachelder  
Geoffrey Bayliss  
Walter and Gina Beinecke  
John and Jan Bell  
Mac Bell

Peter and Karen Bell  
Kermit and Glenys Birchfield  
Deborah Blake  
Kevin and Rose Bottomley  
Thomas Brooks and Karen Newman  
John and Caroll Cabot  
Samuel and Rebecca Campbell  
Ada Howe Kent Foundation  
Richard and Deborah Carlson  
Thad Carpen and Susanne Guyer  
Bettie Cartwright  
Robert Chandler and Ronda Faloon  
Robert and Jan Crandall  
Allan and Kathe Cohen  
Christopher and Lisa Collins  
Cleveland Cook  
Pearce and Phoebe Coues  
Robert Cox and Karen Bell  
Robert and Jan Crandall  
Robert and Jenifer Culbert  
John and Lee Cunningham  
Philip and Eve Cutter  
Goldhirsh Foundation, Inc.  
Goldhirsh-Yellin Foundation, Inc.  
David and Mary Dearborn  
Chris and Jane Deering  
Kenneth and Alice Erickson  
Deborah Freeman  
John and Kathy Galligan  
Darius and Stephanie Gaskins  
Henrietta Gates and Heaton Robertson  
Rose Marie Glen and Clare Bromley  
Mark and Livia Glovsky  
Philip Goldsmith and Melissa Boshco  
Sarge and Susan Goodchild  
Tamara Greeman  
Garth and Lindsay Greimann  
Stephen and Marion Hall  
Kathy Hamilos  
James Hand  
Jerry and Margaretta Hausman  
Mary Healy  
Eric and Hilarie Holdsworth  
Samuel and Elisabeth Holdsworth  
Charles and Judith Hood  
Kanter Kallman Foundation  
Stephen and Missy Kasnet  
Malcolm and Patricia Kerstein  
Jan Koch-Weser and Diane Chen  
Pete and Bobbi Kovner

Catherine Lastavica  
Paul and Jackie Littlefield  
Angus and Leslie Littlejohn  
Joan Lovejoy  
Paul and Christine Lundberg  
William and Nancy Lynch  
Doris Lynch  
Marietta Lynch  
Massachusetts Foundation  
for the Humanities  
Elton and Connie McCausland  
John and Mary Ann McCormick  
Dan and Jenifer McDougall  
Roger and Carol McNeill  
Henrietta Meyer  
Richard Mills  
Amy Moore  
Stuart and Elizabeth Moore  
Joseph and Eileen Mueller  
Lee Natti  
Gregory and Stevie Neal  
Myranda O'Bara  
Nancy Patterson  
John and Sarah Hollis Perry  
Susan Pollack and Eric Schoonover  
Kanter Kallman Foundation  
Ronald and Mimi Pruett  
George and Kathy Putnam  
George and Nancy Putnam  
Judson and Lisa Reis  
David and Lisa Rich  
Carlos and Diane Riva  
Richard and Anne Rosenfeld  
Roger Salisbury and Judith Monteferrante  
Donald Saunders and Liv Ullmann  
Jack and Shelagh Schylling  
Tim and Christy Sheehan  
Thomas and Lyn Shields  
Leslee Shlopak  
Andrew Spindler and Hiram Butler  
Eileen Sporing and Jocelyn Ramella  
James and Kate Stavis  
Campbell and Grace Steward  
Peter and Lynda Surdam  
Ingrid Swanson  
Lynn and Joan Swigart  
William and JoLinda Taylor  
William and Roswitha Traves  
Ernst and Gail von Metzsch  
Michael and Tee Wall

Scobie Ward  
Harold and Lucette White  
Clive Wood and Stella Martin  
Tom and Kristin Zarrella

## \$500 to \$999

Stefan and Barbe Abramo  
Gordon Baird and Joe Ann Hart  
Mary Barcus  
Nancy Barnett  
Tom and Becky Bernie  
Thomas Burger and André Robert  
Peter and Katherine Coakley  
Jim and Sharon Deveney  
Deborah Eliason  
Peter Feinstein and Miriam Weinstein  
Forest Foundation  
Ronald Glick and Sarah Robbins-Evans  
Judy and Carl Gustin  
Chris Hadley and Scott Smith  
James and Leslie Hammond  
Robert and Pamela Irwin  
Helen Joseph  
Eileen Kelley  
Chris and Sue Klem  
Noel Mann and Daan Sandee  
Christine Moore  
Jon and Carol Morse  
Richard Norton  
David Porper  
Robert and Susan Reece  
Benjamin and Courtney Richardson  
Joseph and Maggie Rosa  
Tom and Sally Simons  
Donald and Phyllis Sudbay  
Howard and Betty Thomas  
Gerald and Polly Townsend  
David Tufts  
Linda Walker  
Michael and Candace Wheeler  
Charles and Patsy Whitlock

## \$250 TO \$499

Barbara Almy  
Bob and Judy Anderson  
Bob and Peg Anderson  
Norma Andrews  
John and Sarah Appleton  
Devereux and Jilda Barker  
Beate Becker-Vavak and Stephen Vavak



Hilarie Holdsworth, Mark Glovsky, Jim and Sharon Deveney at the Captain's Party.

Selma and Leslie Bell  
 David and Lida Bernard  
 Ted and Judy Bidwell  
 Standish and Brigitte Bradford  
 Chester and Anthea Brigham  
 Joseph Butler and Nancy Davis  
 Hugh and Joan Collier  
 David Condino and Margaret Brady  
 Diana Connors  
 Janet Cookson  
 Nathaniel and Catherine Coolidge  
 Nancy Corral  
 Martin and Natalie Daley  
 George Davis and Lisa Bonneville  
 Aristides Demetrios  
 Steve and Dawn Dexter  
 Elkhorn Property Trust  
 Robert and Surrey Elwell  
 Adele Ervin  
 Peter and Jan Eschazier  
 Charles and Caroline Esdaile  
 Michael and Mona Faherty  
 Diane Faissler  
 Peter and Annette French  
 Michael and Linda Frieze  
 Marion and Martha Frost  
 Justin and Kari Gale  
 Howard and Naomi Gardner  
 Jack and Susan Gardner  
 Jonas Gavelis and Bonnie Sylvester  
 John and Andrea Glovsky  
 Mark and Janet Gottesman  
 Richard and Joan Gross  
 William and Rose Hausman  
 James and Mary Hayes  
 Kenneth and Anne Herman  
 Eloise Hodges  
 Harry and Judith Hoglander  
 John and Sally Huss  
 Ken and Cathy Kaplan  
 Tom and Maryanne Kiely  
 William and Anne Kneisel  
 Peter and Karen Koch-Weser  
 Stephen and Sigrid Lindo  
 Mark Lindsay and  
 Martha Morgan Lindsay  
 Robert and Joan Lockwood  
 Jane Lyman  
 Daniel and Marcy Lyman  
 Nicholas Lynch  
 David Manley and Nancy Shorter  
 Michael March and Elizabeth Mehlin  
 Charlie and Janet Marcous  
 David and Louise Marsh  
 Alex and Julie Matz  
 Robert and Eileen Matz  
 Henry and Mary McCarl  
 William and Jane McConnell  
 Scott and Mimi McDougal  
 Susan McKain and Ken Steiner

Jay McLaughlan and Sara Stotzer  
 Henry and Valerie Moore  
 Sarah Mowitt  
 John and Olivia Parker  
 George and Joann Phillips  
 Christopher and Esther Pullman  
 Anthony and Clare Quinn  
 John and Jean Rees  
 David and Ann Rhinelanders  
 Bud and Margaret Ris  
 Stephen Sacca and Janet Ulwick-Sacca  
 Stuart Scantlebury and  
 Lecia Ann Turcotte  
 John Schoenbaum and Olga Rakich  
 David and Marie Louise Scudder  
 Daniel and Rita Simard  
 David and Ann Simmons  
 Richard and Priscilla Singleton  
 Trina Smith  
 Steve and Linda Sojda  
 David and Ginni Spencer  
 Nancy Strisik  
 Patrick Thomas  
 Jurrien and Deborah Timmer  
 Yuri Tuvim and Mary Louise Giuliano  
 Chris and Ellen Velline  
 Douglas and Priscilla Viets  
 Clara Wainwright  
 Robert and Margaret Wallis  
 Christopher and Suzanna Weld  
 Peter and Thi Linh Wernau  
 Richard and Deirdre White  
 Robert Whitmarsh and Dolores Laughlin  
 Ted Widmer and Mary Rhinelanders  
 Peter and Lynne Williams

**\$100 TO \$249**

Robert Ackerman  
 Jeremy and Kathleen Adams  
 Raymond Agler and John Carter  
 Elizabeth Akerley  
 Marie Alfieri  
 Eugene Alves  
 Edward and Mary Anderson  
 Gail Anderson and Bill Effner  
 William and Yvette Anderson  
 Bonnie Angus  
 Jean Anjoorian  
 Max and Denise Arai  
 Virginia Atwood  
 Anne Babson Carter  
 David and Val Babson  
 William and Susan Baldwin  
 James and Chris Barker  
 Barbara Beauchamp and Susan Raymo  
 Ed and Sheila Becker  
 Beeman School PTO  
 Jo Ann Bell and Marv Tighe  
 Linda Berard  
 Beverly Public Library

Barbara Beyea  
 Mr. and Mrs. Allan Bezanson  
 Barbara Bjornson  
 Louise Blodget  
 Judith Bly and Abraham Newman  
 Robert Borden  
 Steven and Susan Boshi  
 David and Maureen Bovet  
 Kent and Joanna Bowker  
 Susan Bowles and Win Nelson  
 John and Jane Bradley  
 Bruce and Joan Bradshaw  
 R. Billings Bramhall  
 Peter and Beth Brau  
 Lewis and Miriam Braverman  
 Linda Briggs  
 Elana Brink  
 Mike and Betsy Brown  
 Thomas and Mimi Brown  
 Robert Brown  
 Ralph and Elizabeth Browning  
 Lois Brynes and Serena Hilsinger  
 Joan Buchanan  
 Paul Butman and Sharon Lake  
 Samuel and Claire Cabot  
 Mark and Alison Calandra  
 Andy and Peggy Calkins  
 Bruce and Ann Campbell  
 Randy Carr and Gabrielle Barzaghi  
 Verne and Madeline Caviness  
 Philip Chalmers and Susan King  
 James Clyde  
 Dana and Virginia Cohen  
 Frances Colburn  
 Kevin and Diane Connolly  
 John and Polly Connors  
 Wendel and Suzanne Cook  
 Mike Costello  
 Evelyn, Barbara and Judy Cox  
 Ray and Monica Crane  
 Albert and Hilary Creighton  
 Robert and Jean Cunningham  
 Ronald and Joan Curhan  
 Henry and Judith Curtis  
 Arthur and Julie Daniels  
 Alev Danis and David Moschella  
 Jack and Betty Davis  
 John and Sharon Day  
 David and Sara de la Barre  
 Craig and Laurel Deery  
 Charlesanna Detra  
 Steven Dieck and Hatsumi Miura  
 Jim and Fafa Diedrich  
 Patricia Donahue and Greg Sacca  
 Sarah Dunlap  
 William Duryea and Anne Bowdoin  
 John Easton and Sem Sutter  
 Albert Ellis and Anne Seymour St. John  
 Gary Emmer  
 Robert and Mary Emmons



Dennis Flavin with members and friends at the artist's reception.

Constance Eppel  
 Mary Ann Esdaile  
 Rob and Wendy Evans  
 Edward Everett  
 Ron Farren and Kristal Pooler  
 Jay and Helen Featherstone  
 Ricardo Fernandez and  
 Diana Brooks Keller  
 William Finch and Carol Rose  
 Guy and Andrea Fincke  
 Newell and Kate Flather  
 Terry and Elizabeth French  
 John Gale  
 Charles and Jane Gardiner  
 David and Alice Gardner  
 David Gardner  
 Katerina and Timothy Gates  
 Joseph and Catherine Geary  
 Robert Gillis and Pixie Harrington  
 Lester Gimpelson and L. G. Cagnasso  
 Lia Glovsky  
 Gordon and Judith Goetemann  
 Josette and Louis Goldish  
 Ruth Goodick  
 Peter and Jan Goodwin  
 James and Helen Greely  
 David and Katherine Greenberg  
 Barbara Greenberg  
 Kenneth and Cherie Grey  
 David and Janet Grey  
 Stephen and Linda Greyser  
 Joyce Griffin  
 Gary Griffin and Leslie Pearlman  
 James and Katherine Groves  
 Henry and Gail Guild  
 Craig and Louise Gustafson  
 Robert and Judith Gwozdziwicz  
 Thomas and Barbara Ann Hale  
 Douglas and Susan Hall

Thomas and Joy Halsted  
 Marion Harding  
 Mimi Harper  
 Jane Harris  
 David and Michele Harrison  
 Edward Hart and Family  
 Jonathan and Margaret Harvey  
 Robert Henriques and Jane Singer  
 Bruce and Meg Herman  
 Janet Herrmann  
 Susan Herron  
 Brian and Kathy Hines  
 Margaret Hinrichs  
 Hal Hirshon and Lois Goodell  
 Nick and Debe Holland  
 Charles and Nancy Hovey  
 Ken and Billie Hruby  
 Andrew and Deborah Jacobson  
 Robert and Patricia Jedrey  
 Steve and Debby Jencks  
 Karen Johnson  
 Carol Judd  
 Stephen Kaloyanides  
 Carolyn King  
 Earl and Sharon Kishida  
 Jerome and Linda Klein  
 John and Lois Knaus  
 James and Betty Knott  
 John and Colette Knowlton  
 Bruno and Barbara Kozel  
 John and Carmela Krasnakevich  
 Eric and Johanna Kreilick  
 Miles and Joan Kulukundis  
 Martha Kurz  
 Hamer and Charlotte Lacey  
 Doug and Sylan LaChance  
 Michael and Ann Lafferty  
 Ellen Landrigan  
 Stephen and Janet Langer  
 Joseph and Karolina Latronica

## ALFRED MANSFIELD BROOKS SOCIETY

*Alfred Mansfield Brooks (1870-1963), long time president and curator of the Cape Ann Museum, was responsible for assembling what would ultimately become the largest and finest collection of works by marine artist Fitz Henry Lane (1804-1865). Today, the Museum's Lane Collection includes over 40 oil paintings and more than 100 pencil drawings. The fact that such a comprehensive group of works has remained in the artist's hometown is remarkable, a testament to Brooks' vision and foresight.*

The Alfred Mansfield Brooks Society was established in 2009 to honor the generosity of Robert L. and Elizabeth French and their gifts to the Museum's collection and to serve as an acknowledgement of gratitude to the long line of donors who have shaped the Museum's collection. The Society recognizes those who have made donations of art or artifacts to the Museum, who have pledged a future gift, or who have provided funds for the purchase or conservation of such at a minimum of \$10,000 on or after September 2009.



Ray Agler and Jack Carter  
Willard and Linda Andrews  
Diana Bell  
J.J. and Jackie Bell  
John and Jan Bell  
Karen Bell  
Timothy Bell  
Kermit and Glenys Birchfield  
Dorothy A. Brown  
Bruce J. Anderson Foundation  
Ninon Chaet  
Charles R. Wood Foundation  
Cleveland Cook  
Linzee and Beth Coolidge  
Bill and Ellen Cross  
Ronald and Joan Curhan  
Estate of Richard Kuehne  
Jonathan and Louisa Fairbanks  
Jonathan French  
Peter and Annette French  
Helen Garland  
Myra Hall and James Tolman  
James Hand  
Bruce and Meg Herman  
Cindy Holloran

Ian and Josie Gardiner  
Humane Society of the  
Commonwealth of MA  
Milt and Helen Lauenstein  
Paul Lohnes  
Walter Manninen  
Mr. and Mrs. Alfred Mayor  
Dan and Jenifer McDougall  
John and Mary Jane McGlennon  
Joseph Mesquita  
W. Hugh Morton  
Estate of Anne H. Oaks  
Margaret Pearson  
Susan Pollack and  
Eric Schoonover  
Kanter Kallman Foundation  
Rebecca Reynolds  
Blair and Leanne Robinson  
Arthur Ryan  
Stephen and Virginia Sandy  
Martha Smith  
Kristi Stangeland  
Ingrid Swanson  
William and Roswitha Traves  
Clara Wainwright

Thomas and Grace Lattof  
Milt and Helen Lauenstein  
Robert and Martha Lawrenz  
Geoffrey Leahy  
Kenneth and Royce Leonards  
Janet Lepanto and Richard Metzinger  
Michael Lipton and Catherine Bayliss  
Richard and Pamela Loomis  
Margaretta Lovell  
Peter and Elaine Lucas  
Robert Lufkin  
Nancy Lui-Kwan  
Matthew and Rosemary Lundberg  
Suzanne Macdonald  
Tim and Stephanie Malarkey  
Constantine Maletskos  
Maureen Malloy  
Mary Malone  
Manchester Historical Society  
John and Christine Maney  
Bob and Nancy Marculewicz  
John and Ethel Martin  
James and Dorothy Matthews  
David and Janet McAweeney  
Roy and Shelagh McCauley  
John and Mary Jane McGlennon  
Juliana McGovern  
Dennis McGurk  
Donna McIntire  
Ted and Dee Meeker  
Deborah Meiselman  
David and Judy Messick  
David Michael  
Merritt and Linda Miller  
Jack and Laura Montgomery  
Frances Moon  
Carl and Shirley Moores  
Michael and Kathleen Morelli  
Wendy Morgan  
T. Lincoln and Mary Lou Morison  
Fred and Elizabeth Morris  
Dan and Beth Morris  
Joe and Allison Mueller  
Robert and Barbara Muldoon  
Paula Mullendore  
David and Grace Murray  
Paul Nace and Sally Jackson  
George and Grace Neilson  
Andrew and Catherine Nickas  
Ronald Nickerson  
Marcia Norton  
Betty Odabashian  
Scott and Grace Offen  
Judith Oleson  
Craig and Lillian Olmsted  
David Olsen  
Elizabeth Olson  
Robert Oot and Carol Robey  
Jerrold Oppenheim and  
Theo MacGregor

Rick and Alice Osgood  
Jonathan Ostrow and Deborah Helsberg  
Samuel and Elisabeth Otis  
C. Wood and Robin Paine  
Leonard Parco  
Davis and Deborah Pearce  
Georges and Carolyn Peter  
Steven Phillips and Amy Gault  
Ralph and Kathleen Pino  
Paul andCarolynn Pitman  
Ted and Kathy Pomfret  
M. J. Powell  
Frank and Ellen Previte  
Bob and Ann Pulver  
Oliver Radford and Stephen Perry  
Suesan Randlett and David Hunter  
Bob and Jan Randolph  
Mark and Laurie Raymond  
Theodore and Susan Reed  
Jessie and Andrew Reid  
Rebecca Reynolds and  
David Montgomery  
Elizabeth Rhineland and  
Peter MacEwen  
George and Daphne Roark  
George Rosen and Barbara Gale  
Andrew Rosenberg and Marian Zeles  
Melvin and Martha Rosenblatt  
Steve and Kit Rosenthal  
Amy Bell Ross  
Ronald Ross and Mary Benham  
William and Susan Ross  
Nancy Rossi  
Cynthia and Albert Roth  
Robert Russell  
Richard and Rosella Sagall  
Patrick Salony and Christine McGrath  
Jeffrey and Christa Sammons  
Russell Sandfield and Sabine Ralston  
Diane Sargent  
James and Mary Saunders  
William Schulz and Beth Graham  
Virginia Scott  
Claudine Scoville  
Bailey See  
Paul and Dona Shea  
Jack and Judy Shields  
Dianne Shortall  
Charles Shurcliff  
George and Ellen Sibley  
Dorothy Sieradzki  
Marilyn Slade  
Christopher and Cary Smallhorn  
Russell and Rosamond Smith  
Wayne and Heather Soini  
Glenn and Kathleen Somers  
Richard and Joann Southgate  
Thomas and Caroline Spang  
Frank and Jeanne Speizer  
Lee and Hazel Spence

Suzanne Stacy  
James and Kate Stavis  
Carol Stearns  
June Steel  
Jane Stempel  
Robert Stern and Gail Howrigan  
Jeff and Naomi Stonberg  
Brad and Beth Story  
Judith Strohm  
John Stute and Zoe Stewart  
James and Tom Sutherland  
Brian Tarr  
Ann Teixeira  
Joyce Thomas  
John and Marilyn Thompson  
Samuel and Elizabeth Thorne  
Josh and Genine Tillotson  
Linda Tosi  
Ed Touchette  
James Utterback  
Peter and Kathleen Van Demark  
Blair and Sarah Villa  
Regina Villa  
Judith Walcott  
Graham and Jan Walker  
Stephen and Anne Warhover  
Corinne Waring  
Mary Warner  
Alexander and Samantha Watson  
Cornelius Waud  
Robert and Mary Weatherall  
Jeff and Kathy Weaver  
Barry and Susan Weiner  
James and Virginia Welch  
Bruce Welty and Rachel Perry Welty  
Anthony and Joreen White  
Bradford and Geneva Whitten  
Beth Willis and Julie Wyman  
Fritz and Peggy Willmann  
John Wilmerding  
Arlene Wilson  
David and Enid Wise  
Jane Wolf  
Suzanne Ziemer  
Jason and Margaret Zorfus

### UP TO \$100

Mim Aaronian  
Jerry and Carol Ackerman  
George and Allison Adam  
Amory and Deborah Aldrich  
Francis and Rebecca Aliberte  
Nancy Alimansky  
Herbert and Catherine Allard  
Allen County Public Library  
Louise Todd Ambler  
Tom Amend and Elizabeth Bish  
Linda Amero and Hank Turgeon  
Linda Ames  
Peter Anastas

Walker Hancock (1901-1998). *Alfred Brooks Memorial Sundial*, 1967. Bronze. Gift of the artist, 1967. [2012.67]

Patricia Anders  
 Mr. and Mrs. George Anderson  
 Anne-Marie Anderson  
 Eben and Sandy Andrew  
 Thomas and Nancy Andrew  
 Willard and Linda Andrews  
 Rory and Jean Ancombe  
 Jean Appeltofft  
 Linda Ashley  
 Ronald Atwood  
 James Avallon and Michael Gendre  
 Joanne Avallon and Kurt Ogle  
 Merribel Ayres  
 Isobel Baade  
 Jim and Kathy Bacsik  
 Thomas and Shiela Baker  
 Tom Balf and Donna Heaney  
 Nancy Balf  
 Ann Banks  
 John Bassett and Christina Wolfe  
 Joe Bayes and Lynda Goldberg  
 Ann Baylies  
 Kenneth and Helen Beal  
 Pat Beckett and Lorna Condon  
 Corina Belle-Isle  
 Robert and Merrilyn Belliveau  
 David and Sally Benjamin  
 Edward and Linda Berger  
 John and Ann Berges  
 Peter and Joyce Bergholtz  
 Shari Berkal and Bruce Lascola  
 Sam and Vivian Berman  
 Linda Berry  
 Anthony and Patricia Bertolino  
 Deborah Beveridge  
 Jonathan and Diane Bevins  
 Bradford Bigelow  
 Julia Bishop  
 Charlotte Bishop  
 John and Cynthia Bjorlie  
 Sheila Blake  
 John Blanding  
 Marie Blanding  
 Dale Blank and Tom Fox  
 Bernice Blitz  
 Eric and Adrienne Boeker  
 Martha Bowen  
 Glenn and Jane Bowles  
 Babette Brackett  
 Barbara Brackett  
 Loring Bradley  
 Sally Bradshaw and Dottie Murkland  
 Robert and Lori Bradshaw  
 Suzanne Brailey  
 Peter and Linda Braun  
 Alan and Barbara Braver  
 Ron Breault  
 Donald and Katherine Breen  
 Lise Breen  
 Barbara Brewer

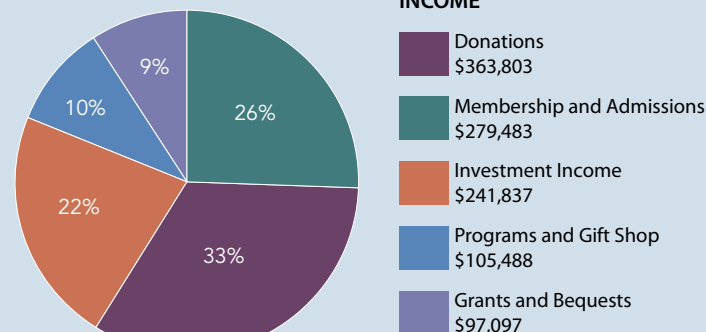
Mr. and Mrs. Stephen Bridges  
 Barbara Bridges-Elliott  
 Susan Britt  
 Doug and Cassie Brown  
 Jane and Laura Brown  
 Shepard Brown and Elisabeth Simonds  
 Elaine Brown  
 Carolyn Buckley  
 Philip and Lois Budrose  
 Joy Buell  
 Mary Burgarella  
 Angela Burke and Jane Burke-Miller  
 Charles and Maria Burnham  
 William and Sharon Burton  
 Bill and Gerrie Butman  
 Ann Byers  
 Josh and Christina Cahill  
 Elizabeth Calder  
 Jim and Charlene Callahan  
 Marie Campello  
 Douglas and Sarah Caraganis  
 Edward Carberg  
 Barbara Careaga  
 Jonathan and Jill Carey  
 Judson and Jan Carlberg  
 Karen Carpenter  
 Marty Carriker  
 John and Anne Carty  
 Francie Caudill  
 Ninon Chaet  
 Lawrence Chakrin  
 Karen Chellquist  
 Michael and Jill Chipperini  
 JoAnne Chirico  
 Bradford Chisholm and Gail Smith  
 Nathaniel and Hester Clapp  
 Chester and Ellen Clark  
 Elaine Clark  
 Jack Clark and Fara Courtney  
 Gail Clifford  
 Irma Cohen  
 Dave and Sharron Cohen  
 Nathan Cohen  
 William and Betsey Colby  
 Doris Cole  
 Robert and Sally Collini  
 Patricia Conant  
 Linda Cook  
 Peter and Connie Corbino  
 Laurie Corral  
 Kathryn Costa  
 John Costa  
 Mary Couchman  
 Audrey Coughlin  
 Deborah Cowan  
 David Cox  
 Kitt and Theresa Cox  
 Evelyn Craaybeek  
 Paul and Carol Craig  
 Mary Lou Crane

Roger Cressey  
 Denton Crews and Katherine German  
 Robert and Ruth Crocker  
 Damon and Melissa Cummings  
 Pat Cummings  
 Joan Cummisskey  
 Andrew Cunningham and Kelsey McNiff  
 Preston Curtis  
 Elizabeth Hope Cushing  
 Marinus Cutler  
 Susan Daly  
 Mary Lou Dana  
 Carl and Mimi Darrow  
 Chandler and Nancy Davis  
 Donna Davis  
 Charles and Barbara DeCoste  
 Debbie DeCotis  
 Jacqueline and Michael DeFalco  
 David Demaine and Ruthanne Collinson  
 Robert and Ann DeMaine  
 Virginia Dench  
 Bruce and Veronica Devon  
 Anita Diamant and Jim Bell  
 Brenton and Elizabeth Dickson  
 Franklin Doeringer  
 Margaret Donahue  
 Richard Douglas  
 Sandra Douglas  
 Barbara Drake  
 William and Jean Dugan  
 Patricia Dumas and Esther Joyce  
 Sue Durkin  
 Karen Dyer  
 William and Deborah Ebeling  
 Roger and Ruth Edmonds  
 Carolyn Edwards  
 Jane Edwards  
 John and Janet Egan  
 Carleton and Virginia Ekborg  
 Martha Elder  
 Morgan Eldridge and Sheldon Sayre  
 Celia Eldridge  
 Tom and Kay Ellis  
 David and Susan Emerson  
 Tom and Diane Emmons  
 Dominic and Tamsen Endicott  
 Barbara Erkkila  
 Betty Erkkila  
 Patricia Evans  
 Jamie and Amy Fanning  
 Mark and Amy Farber  
 Phyllis Feld  
 Cathy Felton  
 Bill and Lyn Fenollosa  
 Jane Ferreira  
 Virginia Field  
 Adam and Nina Fieldsteel  
 Prudence Fish

Summary of Operating Revenue and Expense

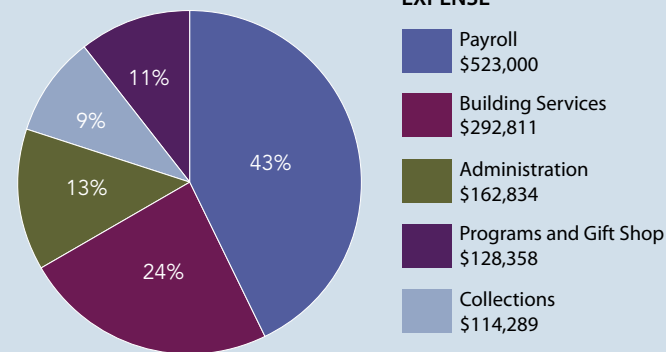
This is not a complete financial statement. A complete, audited financial statement is available upon request. Capital Campaign receipts and expenditures are not included in this summary and will be separately presented at a later date.\*

**INCOME**



**Total Income \$1,087,708**

**EXPENSE**



**Total Expense \$\$1,221,292**

\* The Museum has been closed since October 1, 2013 while our major renovation is in progress.



**\$2,500 to \$14,999**

Cape Ann Savings Bank

**\$1,000 to \$2,499**

Ambient Temperature

Bomco

Building Center

Cape Ann Marketplace

Carroll Steele

Insurance Agency

Gorton's Seafood

J. Barrett Real Estate

Frank Vanzler, KVA Associates

Mercury Gallery

Nor'East Cleaners

Rockport National Bank

Sudbay Automotive Group

Timothy S. Hopkins Catering

Women on the Move

**\$500 to \$999**

Atlantis Oceanfront Inn

Common Crow

Cricket Press

Cruiseport Gloucester

Sonolite Plastics

Timberline Enterprises

W. Herbert Goodick

**\$250 to \$499**

Defalco Painting Company

Essex Alarm and Security

Glovsky & Glovsky

Pasquina Law Office

Pulsifer & Associates

Sea Lion Motel

Vista Motel

**Up to \$250**

Again & Again

BankGloucester

Bonneville Interior Design

C.B. Fisk

Cape Ann Insurance Agency

Cape Pond Ice Company

Chalmers & Associates

Coldwell Banker

Glover's Floor Covering

Halibut Point Restaurant

Hershey Frame Shop

Roy Spittle Associates

Sue Henderson Ed Consulting

TD Bank

Trident Gallery

Wells Fargo Advisors

**Matching Gifts**

Bank of America Charitable

Foundation

Gorton's Seafood

Quaker Hill Foundation

Waters Corporation

Mary Ann Fisher  
Lyn Fitzgerald  
Colin Fleming  
Margie Florini  
Richard and Diane Foley  
Paul Forman  
Heidi Forrester  
Gregg and Martha Fox  
Karl and Joan Frank  
Audrey Fraser and Richard Stoloff  
Joseph and Christine Frassica  
Paul Frazier  
Walter Fredrick  
Anita Freeman and Phillip Albright  
Caroline French  
Linette French  
Katherine L. French  
Dagmar and Ephraim Friedman  
William and Judy Friend  
Wendy Frontiero  
William and Bonnie Gale  
Dorothy Ganick  
Barbara Gannon and Robert Sullivan  
Evelynn Gariedy  
Gerry and Eloise Gehr  
Adena Geller  
Myron and Eileen Geller  
Robert and Mary Gerbrands  
Brooks and Whitney Gibson  
Leonardo Gilardi  
Ron and Joan Gilson  
David and Regina Girard  
Charles Gladstone and Elaine Souza  
Jay and Kathleen Goldman  
Curtis Gollrad and Dale Brown  
Leonard and Cheryl Goodman  
Gary and Karen Gorczyca  
Carmine and Joan Gorga  
Joan Gorton  
Michael and Karen Gorton  
Michael and Patricia Goulart  
Richard Graham and Jane McKeel  
John and Rebecca Graham  
Patrick and Naomi Gray  
Margi Green  
Paula Grillo  
Paul Gross and Cornelia Tenney  
Margaret Guest  
Gail Guittarr  
Janis Guter  
Sarah Hackett  
Myra Hall and James Tolman  
Kathy Haller  
Christopher and Joanne Halligan  
Laura Hallowell  
Isabella Halsted  
Lauren Hamilton  
Hamilton-Wenham Public Library  
Edward and Jackie Hardy  
John Harrington and Deborah Marston

Carolyn Harris  
John and Kathy Harris  
Katrina Hart  
Brett Hayes  
Steve and Martha Heassler  
Leslie Heffron  
Robert Heinman and Susan Field  
Bill and Joy Hennessey  
Gale Hermanet  
Richard Heuser  
Sheila Higgins  
John Hinckley  
Bob Hinkle  
John Hintlian  
Estelle Hochberg  
Ann Hochberg and Howard Weinstein  
Nancy Hodgkins  
Rollyn and Judith Hoffman  
Susan Holden  
Harriet Holdsworth  
Herb and Meg Hollender  
Kathryn Hollett  
Bob Holloway and Christina Doyle  
John and Elizabeth Holmberg  
Stephen Holt  
William and Lynne Holton  
Sarah Honenberger  
Lorraine Horn  
Stephen and Jeanne Howard  
Richard and Sharon Howard  
Jay and Louie Howland  
Eleanor Hoy  
Melinda Huff  
Daniel and Priscilla Hurley  
Bette Hutchins  
Barbara Hyams  
Shelby Hypes  
Coralie Ingraham  
Paula Ives  
Nancy Ives  
William Jackson  
Sandra Jamieson  
Peter Jenner and Carolin Catalano  
Mayo and Julie Johnson  
Diane Johnson  
Bruce Jones and Tina Cross  
Margaret Justice  
Abigail Kaiser  
David and Meredith Kantor  
Michael and Barbara Kaplan  
Carol Karlson  
Donna Katan  
Suzanne Kaufman  
Shayla Kaufmann and Paul Swigart  
Reed Kay  
Christine Kaye  
Johanna Keefe  
Barbara Kelley  
Paul and Leah Kelley  
Fred and Lenore Kepler

Michael and Fiona Kerr  
Thomas and Laura Kerr  
Phyllis Kerr  
John Keyes  
Marilyn Kimball  
Peggy Kimball  
Elizabeth King  
Mark and Judith King  
Priscilla Kippen  
Paula Knuuttunen  
Neil Kobrosky and Linda Gipstein  
Mark and Heather Kolnsberg  
Susan Kolwicz and Ken Parker  
John and Janet Koza  
Norman Krause  
Michael Kressley and  
Wendy Riggs-Smith  
David Kriebel and Margaret Quinn  
Marvin Kushner  
Mark Lacey and Susan Fehrmann  
Andrew and Grace Ladygo  
Mark Laliberte  
Arline Land  
Maria Lane  
Gerrit Lansing  
Jack and Susan Lawrence  
John and Martha Lazarus  
Margery Leach  
Christopher and Kathryn Leahy  
Edwin and Marcia Leavitt  
Michael and Nancy Leavitt  
Kenneth and Beth Lebow  
Brenda LeClerc and Laurel Seneca  
Nancy LeGendre and Walter Herlihy  
John LeJeune and Mary Donovan  
Wayne and Marguerite Lemmon  
Janet Lemnah  
Martha Lennon  
Richard Leonard  
Peter and Roxanna Leone  
Lucille LePage  
Mary Ellen Lepionka  
Roger and Susan Levine  
Marian Linden  
Carol Linsky  
Brooks Lobkowitz  
Maryjane Long  
Deborah Loomis  
Richard Lord  
William and Agnes Loring  
Fred and Jill Lovejoy  
Philip Lowcher  
Jim and Laura Lowell  
Beth Luchner and Jeffrey Berman  
Fitz and Marianne Lufkin  
Monique Luijben  
Sheila Lummis  
Douglas and Anna MacArthur  
J.D. MacEachern  
Edward and Norma Mahoney

James T. McClellan (1910–2005), *Seahorse*, c. 1970s, carved wood with gold patina. Gift of the artist.



Donald Maier  
 Harold and Cynthia Mallette  
 Peter Maltzan  
 Carroll Manning  
 Theodore Lane Manning  
 Jeannette Marchant  
 Richard and Donna Marchant  
 Carleen Marchi  
 Charlie Marcous  
 Joseph Mari  
 Virginia Markell  
 Adah Marker  
 Louise Marks and Faye Bergsman  
 Anthony and Maria Marolda  
 Susan Marr  
 Lee Marshall and Paul Goldberg  
 Shirley Marston  
 Mr. and Mrs. Richard Martin  
 Robert and Meredythe Martinez  
 Dorothy Martins  
 Jean Marzollo  
 Bob and Kat Masella  
 Connie Mason  
 Michele May and David Walt  
 Cheryl Mazer  
 Valerie McCaffrey  
 Frances McCarthy  
 Kathie McCarthy  
 John McClellan  
 Judith McCulloch  
 Kevin McDonough and Susan Lillis  
 Paul and Catherine McGeary  
 Robert McGillvray  
 Walter and Joyce McGrath  
 Michele McHugh  
 Athena McInnis  
 Jeannie McIntyre  
 Ann McKay  
 Carol McKenna  
 Clifford and Carole McLellan  
 Jane Mead  
 Joseph Mechem  
 Adriana Mederos and Stephen Black  
 Natalie Medici  
 Linda Medwid  
 Robert and Mary Mehlman  
 Michael and Heli Meltsner  
 Ruth Menicocci  
 Thomas and Jo-Ann Michalak  
 Walter Miller and Bernadette Carr  
 Margaret Mills-Michael  
 Patricia Mitchell  
 Daniel Mituik  
 Robert Monroe  
 Jane Montecalvo  
 Janet Montgomery  
 John and Edith Montgomery  
 Veronica Morgan  
 Nancy Morgan  
 Jim and Kris Moroney

John and Shirley Morris  
 Kathy Morris  
 Paul Morrison  
 Priscilla Moulton  
 Geoffrey and Barbara Movius  
 Ed Mowrey  
 Kerry Mullen and Deb Hardy  
 Eileen Muniz  
 Owen Murphy and Courtney Cronin  
 Richard and Liz Murray  
 Avis Murray  
 Mark and Melanie Murray-Brown  
 Arthur Nash  
 Amanda Nash  
 Scott Nason  
 Judith Nast  
 Hart Nelsen  
 Duncan and Beebe Nelson  
 Dorothy Nelson  
 Mark Nelson and David Oliver  
 Barbara Nelson  
 Valerie Nelson  
 William and Marie Neuhauser  
 Elizabeth Nicastro  
 Ann Nichols  
 Ben Niedermeyer and Joanne Hidaka  
 Thomas and Louise Mary Nolan  
 Claire Norton  
 Grace and Giuseppe Numerosi  
 Carlaine Ober  
 Gail O'Docherty  
 Patricia O'Hare  
 Elaine Ohlson  
 Sarah O'Leary  
 Michael O'Leary  
 Mary Oliverson  
 Jim and Trudi Olivetti  
 Deb Olken  
 John and Jane Olson  
 Judy O'Malley  
 Philip O'Neil and Lynn McWhood  
 Elizabeth Only and Sean Recroft  
 Frances and Robert Osten  
 Sydney Owens and Carl Weggel  
 Thom Padick and Joan Flynn  
 Bill Palmer and Anne Robinson  
 Bill Pappas  
 Elizabeth Parillo  
 Christy Park  
 Stephen and Lea Parson  
 Gregg and Susan Parsons  
 Peter Parsons  
 Sandra Pascal  
 Phyllis Paster  
 Jane Paznik-Bondaric and Andrew Kaelin  
 Carolyn Pearce  
 Sue Ann Pearson  
 Ronald and Margaret Perrin  
 James Perry  
 Barbara Perryclear

Karen Petersen  
 Karin Peterson  
 Marcia Faye Peterson  
 Pat and John Petrou  
 Sarah Picone  
 David and Joanna Pistenmaa  
 Vanesa Pliura  
 Irv and Janet Plotkin  
 Sarah Plows  
 Lucy Potter  
 Jenna Powell  
 William and Katharine Prater  
 Mary Alice Price  
 Will and Elizabeth Prickett  
 Esther Proctor  
 Agnes Puff  
 Hans Pundt and Lynne Sausele  
 Mary Putonen  
 Beverly Quint  
 Christina Rafter  
 Herb Randle  
 Robert and Susan Ranta  
 Janet Rattray  
 Catherine Rawding  
 Myles Reardon  
 Ruth Rehfus  
 Howard and Joan Resnikoff  
 Frederic and Patricia Rhinelandier  
 David Rich  
 Susan Richardson  
 Nicole Richon-Schoel and James Schoel  
 Elwin and Paula Richter  
 Sheila Rider  
 Thomas and Deborah Riquier  
 Karen Ristuben  
 Bob and Andrea Ritchie  
 Lillian Roberts  
 Elizabeth Roland  
 John Ronan and Sandra Dahl-Ronan  
 Barbara Rose  
 Dale Rosen and Terry Segal  
 Michael and Patty Rosenblatt  
 Alan and Sue Ann Rosenthal  
 Dick and Olga Rothschild  
 Edward and Susie Rowland  
 Carolyn Roy  
 Pauline Runkle and Robert Beurit  
 Teresa Russell and Jeff Rosensweig  
 Doris Rust  
 Maureen Ryan  
 Donald and Thelma Ryan  
 Jerome Ryan  
 Robert and Debra Ryan  
 Robert and Patricia Ryan  
 John Salisbury  
 Sandgrain Productions  
 James Sanford and Matthew Casey  
 William Sano  
 Dawn Sarouf  
 Curtis and Betsy Sauter



[top to bottom] Juni van Dyke (seated, far right) and students, with Mary Clarke (seated, center) in front of *Three Dancing Girls* painted by her grandfather Charles Hopkinson (Mary Clarke's mother, Mary Hopkinson, is the middle girl in the painting); Marina Evans with Joe Cardoza (left) and Dave Brown (right) perform at Music in the Courtyard; Composer Robert Bradshaw conducts his interpretation of Virginia Lee Burton's *Katy and the Big Snow*.



Work begins October 2013.

Paul and Judith Schroeter  
 Jessica Schwarzenbach and Paul Hackett  
 Claudia Schweitzer  
 Sally Seamans  
 Francis and Barbara Sears  
 Roger Serbagi and Nadine Moody  
 Rita Seru - Gardner  
 John and Marcia Seward  
 Bruce and Sandy Shaw  
 Helene Shaw-Kwasie  
 Thomas and Anne Sherman  
 Jeffrey and Marlene Shindell  
 Arnold Shore and Laurisa Sellers  
 Ed and Kaye Lynn Shoucair  
 Davina Shuman  
 Carol Sidlowski  
 Julie Sidon  
 Marcia Siegel  
 Ed and Barb Silberman  
 Thomas and Lois Simmonds  
 Bruce and Kathy Slifer  
 Isabel Sloane  
 Richard Sloane  
 John and Betty Smallwood  
 Sally Smithwick  
 Adele Sobel  
 Mary Soderstrom  
 Lisa Soli  
 Rachel and Kate Somers  
 Cecily Spencer  
 Marianne Spencer

Newton and Judy Spurr  
 Paul and Elizabeth St. Germain  
 Danuta Stachiewicz  
 Jeremy Stahlin and Judith Fleischman  
 Elaine Starrett  
 Robert Stefani  
 Charles and Nancy Steiner  
 Olaf and Hilary Stelling  
 Michael Stelluto  
 Phyllis Stevens and Allen Giles  
 John Stevens  
 William and Ellen Stone  
 Heidi Stowe  
 Pamela Stratton and Kathryn Tuck  
 Michael and Cheryl Sullivan  
 Jeff Surrette and Cathy McCarthy  
 Patricia Sutherland  
 Martha Swanson  
 Larry and Marilyn Swift  
 Marie V. Swinson  
 Cori Taggart  
 Elizabeth Talbot  
 Robert and Holly Tanguay  
 Anthony Tappé  
 David and Rita Teele  
 David and Mary Thielscher  
 Geoffrey and Annie Thomas  
 Noel and Judith Thyson  
 Peg Timpson  
 Burton Tinker and Ruth Perrault  
 David Tower and Robin Hoffman

Paul and Maureen Trefry  
 Robert and Joyce Tuffley  
 Mary Tysver  
 Ted Tysver  
 Juni Van Dyke  
 Allan and Andrea van Gestel  
 Harriet Van Wart  
 Beverly Verrengia  
 Robert and Jane Viator  
 Shelley Vincent  
 Christine Virden  
 Conrad Vitale  
 Anna Vojtech  
 Deborah von Rosenvinge  
 Dorothy von Rosenvinge  
 Hazel von Rosenvinge  
 Ralph and Ana Waddey  
 Heidi Wakeman and Coley Bryan  
 Sage and Linda Walcott  
 Edward and Eva Walker  
 Susan Walker  
 Meg Wallace and Sandy Anderson  
 Alan and Sarah Ward  
 Deborah Way  
 Gretchen Webster  
 Mary Weissblum  
 Richard and Rosemary Weissman  
 William Wells and Arlene Hill  
 Diana Welsh  
 Joseph and Inga Wennik  
 Colby and Laura West

West Gloucester Trinitarian Church  
 John Westerberg  
 Natalie Wheeler  
 Vivian Wheeler  
 Kristen Whelan and John Rockwell  
 Bruce and Anne Whilton  
 Susan White  
 William and Deborah Whiting  
 Terri Whitney  
 Alice Whittaker  
 Phil Wilde  
 Beth Williams  
 John Willis  
 Alan Willsky and Susanna Natti  
 Nannie Winslow  
 Frederick and Susan Winthrop  
 Nanette Witkin  
 Ross and Betsy Wittemann  
 Andrew and Mary Wittkower  
 Oliver and Carolyn Wolcott  
 Vivian Wood  
 Bruce and Brenda Woodbury  
 Rebekah Wostrel and Ted Coffey  
 Douglas and Robin Wright  
 Martha Wright  
 Jim and June Wulff  
 Shawn and Mark Young  
 Samuel and Ann Ziergiebel  
 Clifton Zwirner

## GIFTS IN HONOR

**In Honor of Dorothy Brown**  
 Joseph and Maggie Rosa

**In Honor of Thomas Hovey**  
 Eliza Cowan  
 William Hovey

**In Honor of Tom Manning**  
 Carroll Manning

## IN KIND DONATIONS

American Marine Model Gallery  
 Leslie Bartlett  
 Braga Management - Azorean  
 Restaurant  
 Cape Ann Brewing Company  
 Cape Ann Community Cinema  
 Cape Ann Savings Bank  
 Carroll Steele Insurance  
 Diane Chen  
 Brian Colby  
 David Cox  
 Chris and Bonnie Covington  
 Cricket Press  
 DeFalco Painting & Decorating  
 Peggy Flavin  
 Finch & Rose, Preservation & Design  
 Bill and Judy Friend  
 Gloucester Civic and Garden Council  
 Catherine Bayliss, Gloucester Systems  
 W. Herbert Goodick, Inc.  
 Hershey Frame Shop  
 Phil Hopkins, Film Chest Media Group  
 Fred Johnson  
 Christine Kahane  
 Landry & Arcari  
 Oriental Rugs and Carpeting  
 Jeannine Lynch  
 Henry and Mary McCarl  
 Judith Monteferrante  
 Jon Morse, CPA  
 Lee Natti  
 Susanna Natti  
 Sarah Hollis Perry  
 Peter Phillips  
 Bob Quinn  
 John Rando  
 Erik Ronnberg, Jr.  
 Steve Rosenthal  
 Rose's Marine  
 Andrew Spindler Antiques  
 Thacher Island Association: Peter Berg-  
 holtz, Paul St. Germain, Bill Whiting  
 Timothy S. Hopkins Catering  
 Ed Touchette  
 William and Roswitha Trays  
 Annmarie Linnane,  
 Women on the Move

## MEMORIAL GIFTS

**In Memory of Janet Fusek Boshko**  
 John Westerberg

**In Memory of Shirley Duffy**  
 Barbara Beyea  
 Mr. and Mrs. Robert Gallant  
 Jean Hodgins  
 Jeanne LaDuke  
 Margaret Pearson  
 Terri Whitney

**In Memory of Barbara Erkkila**  
 Elana Brink

**In Memory of Zygmund Jankowski**  
 Betty Odabashian

**In Memory of Carl Swanson**  
 Mr. and Mrs. Robert Brown  
 Mary Ann Esdaile  
 Darius and Stephanie Gaskins  
 Henrietta Gates  
 Alfredo Kniazzech  
 Bob and Ann Pulver  
 Trina Smith  
 Laura Swanson  
 Margaret Timpson  
 Frederick and Susan Winthrop

## IN MEMORY

### BARBARA ERKKILA (1918–2013)

In the early 1990s, Barbara began laying the groundwork for donating her extensive collection of granite related tools, photographs, documents and ephemera to the Cape Ann Museum. In 1994 the collection started to come in, a process that went on through 1997. Every item that Barbara brought to the Museum came with a written description including provenance and, if the item was a tool, an overview of how it was used in the granite quarrying process. Barbara's attention to detail was amazing and her documentation of the collection adds immeasurably to the importance and value of her gift. Knowing who originally owned and used a blacksmith's chest, a pair of safety glasses, a tool box full of hammers and chisels has opened all sorts of doors for the Museum, allowing us to explore in detail the lives and accomplishments of the men and women who made up Cape Ann's granite industry.

In the nearly 20 years since Barbara selected the Cape Ann Museum to be the repository for her collection, other donors have followed her example donating additional items to our holdings. Today, the Museum is proud to have one of the strongest collections of granite quarrying materials in New England.

For many years, Barbara served as an advisor to the Cape Ann Museum's Collections Committee. With her vast knowledge of all aspects of local history, she was a valuable and much appreciated asset to that group.

– Martha Oaks, Curator  
Cape Ann Museum



# CAPE ANN MUSEUM

---

ART HISTORY CULTURE

27 PLEASANT STREET GLOUCESTER MA 01930